

RSH Tag09

RSH Key Finder Tracker User Manual

Model: Tag09 | Brand: RSH

1. INTRODUCTION

The RSH Key Finder Tracker is a smart Bluetooth tag designed to help you locate your valuable items quickly and efficiently using Apple's Find My network. This device is ideal for tracking keys, wallets, bags, luggage, and more, providing peace of mind by helping you keep track of your belongings.



Image: RSH Smart Tags and included batteries.

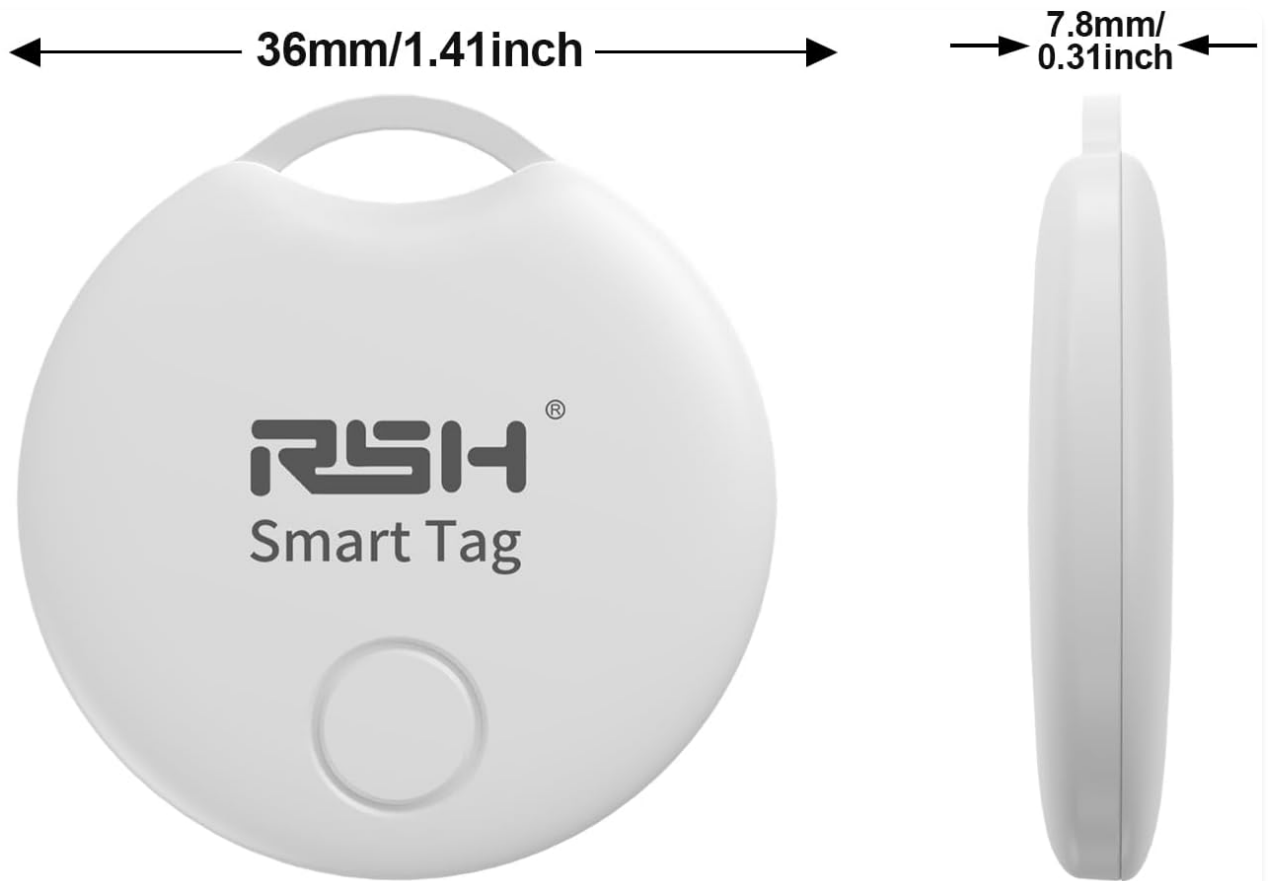
## 2. PACKAGE CONTENTS

Upon opening your RSH Key Finder Tracker package, you should find the following items:

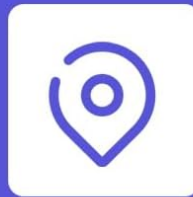
- RSH Smart Tags (Quantity: 4, typically 2 black and 2 white)
- CR2032 Batteries (Quantity: 4, pre-installed with blocking tabs)
- Opener Tool (for battery replacement)
- User Manual

## 3. SPECIFICATIONS

Product Dimensions	1.4 x 1.4 x 0.28 inches (36mm x 36mm x 7.8mm)
Item Weight	1.76 ounces
Connectivity	Bluetooth
Battery Type	CR2032 (Included)
Water Resistance	IP67 (Up to 30 minutes in 3ft of water)
Sound Level	80-100dB



**2 Batteries**  
Work for 1 year



**Up to 60m/200ft**  
Bluetooth range



**IP67**  
Waterproof



**80-100dp**  
Loud Sound

Image: Key specifications and dimensions of the Smart Tag.

## 4. SETUP GUIDE

Follow these steps to connect your RSH Smart Tag to your Apple Find My app:

1. **Prepare the Tag:** Pull out the plastic blocking tab from the Smart Tag to activate its battery. You should hear a chime indicating it's powered on.
2. **Enable Connectivity:** Ensure that Wi-Fi and Bluetooth are turned on on your iPhone or iPad.
3. **Open Find My App:** Launch the Apple Find My app on your iOS device.
4. **Add New Item:** In the Find My app, navigate to the 'Items' tab and tap the '+' icon. Select 'Add Other Supported Item'.
5. **Search for Item:** The app will begin searching for nearby compatible items. Place the Smart Tag close to your device.
6. **Connect:** Once 'iTag03' (or similar name) appears, tap 'Connect'.

7. **Name Your Item:** Enter a descriptive name for your tag (e.g., 'Keys', 'Wallet', 'Luggage').
8. **Choose an Emoji:** Select an emoji to visually represent your item in the app.
9. **Agree to Terms:** Read and agree to the terms and conditions for using the Find My network.
10. **Complete Registration:** Tap 'Finish' to complete the setup process. Your Smart Tag is now linked to your Apple ID.

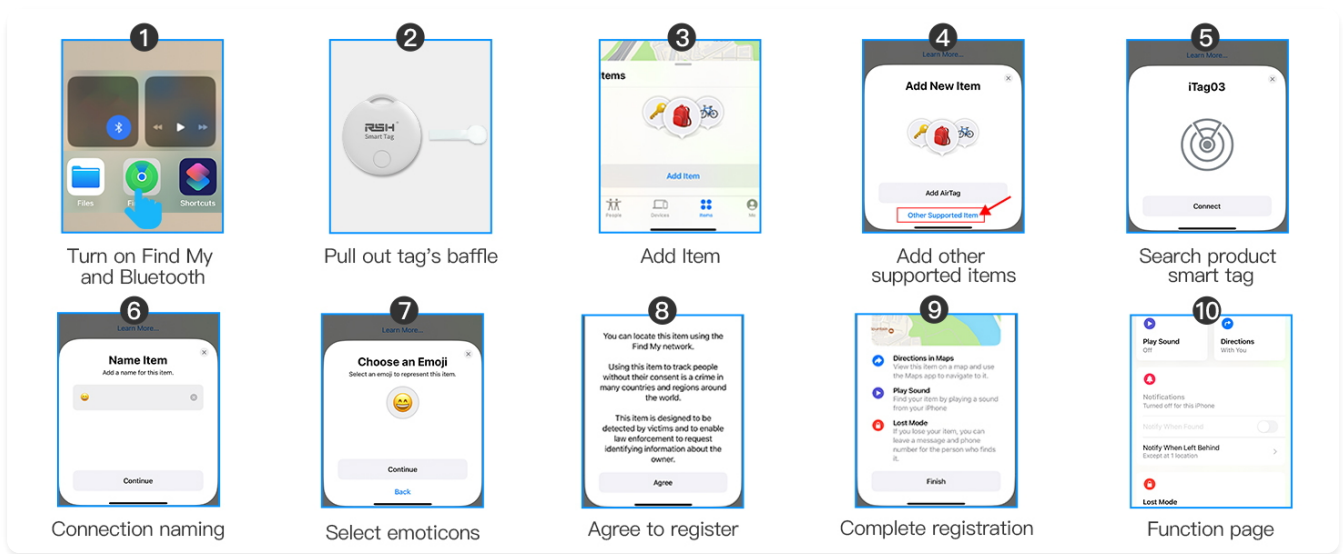


Image: Step-by-step guide for connecting the Smart Tag to the Find My app.

Video: Demonstrates the setup and basic functionality of the RSH Smart Tag, including pulling the battery tab and connecting to the Find My app. This video is provided by the seller, RSH USA.

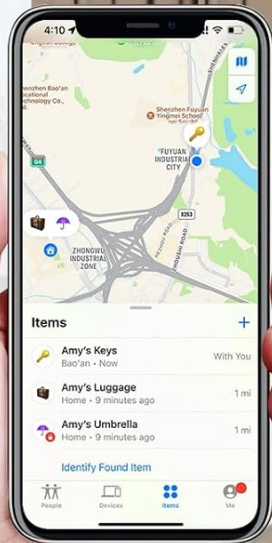
## 5. OPERATING THE DEVICE

### 5.1 Finding Items Nearby

If your item is within Bluetooth range (up to 250ft/75m), you can use the Find My app to make the Smart Tag emit a loud sound (80-100dB) to help you locate it. Simply open the Find My app, select your item, and tap 'Play Sound'.

## Find your things nearby

Make it easier for you to find items  
Bluetooth rang up to 250ft/75m



Beep Beep

Beep Beep

Beep Beep

Image: Locating an item nearby using the sound feature.

### 5.2 Finding Items Far Away (Lost Mode)

When your item is outside of Bluetooth range, the Apple Find My network can help you locate it. Millions of Apple devices anonymously relay the location of your tag to the Find My app, allowing you to view its last known location on a map and get directions. You can also enable 'Lost Mode' to display your contact information to anyone who finds your tag.



# FIND FAR AWAY

When outside of Bluetooth range, use the "Find My" App to view it on the map and guiding you to the vicinity of RSH tag



Image: Locating an item far away using the Find My network map.

## Set Lost Mode

If you have set up personal information, When someone finds your tag, he can check your contact information in lost mode.



Image: Setting Lost Mode to help others return your item.

## 5.3 Left-Behind Reminders

The Find My app can notify you if you leave your RSH Smart Tag behind. This feature helps prevent accidental loss by alerting you when the tag is no longer detected near your device.

## Left-behind Remind Never Lost Things



“keys” left behind

This item is no longer detected near you , it was lost seen near...



Image: Receiving a 'Left-behind Remind' notification.

### 5.4 Privacy Features

Your location data and history are never stored on the RSH tracker. The tracker data is encrypted at every step, ensuring your privacy. Even Apple devices do not know the identity of your device, maintaining anonymity within the Find My network.



## Only you can see what your RSH tracker is.

Your location data and history will never be stored on the tracker. The tracker data is encrypted at every step. Therefore, even Apple devices do not know the identity of your device.



Image: RSH Smart Tag privacy features.

## 6. MAINTENANCE

### 6.1 Battery Replacement

The RSH Smart Tag uses a replaceable CR2032 coin cell battery. The battery is designed to last up to 12 months. You can check the battery status in the Find My app. When the battery is low, use the included opener tool to carefully pry open the tag and replace the battery. Ensure the new battery is inserted with the correct polarity.

## REPLACEABLE BATTERY

Two batteries will work for about a year, which lasts up to 12 months. You can check the battery status in "Find My" app, and replace it in time. The long battery life makes sure the item tracking tag is always active to help you locate your items.

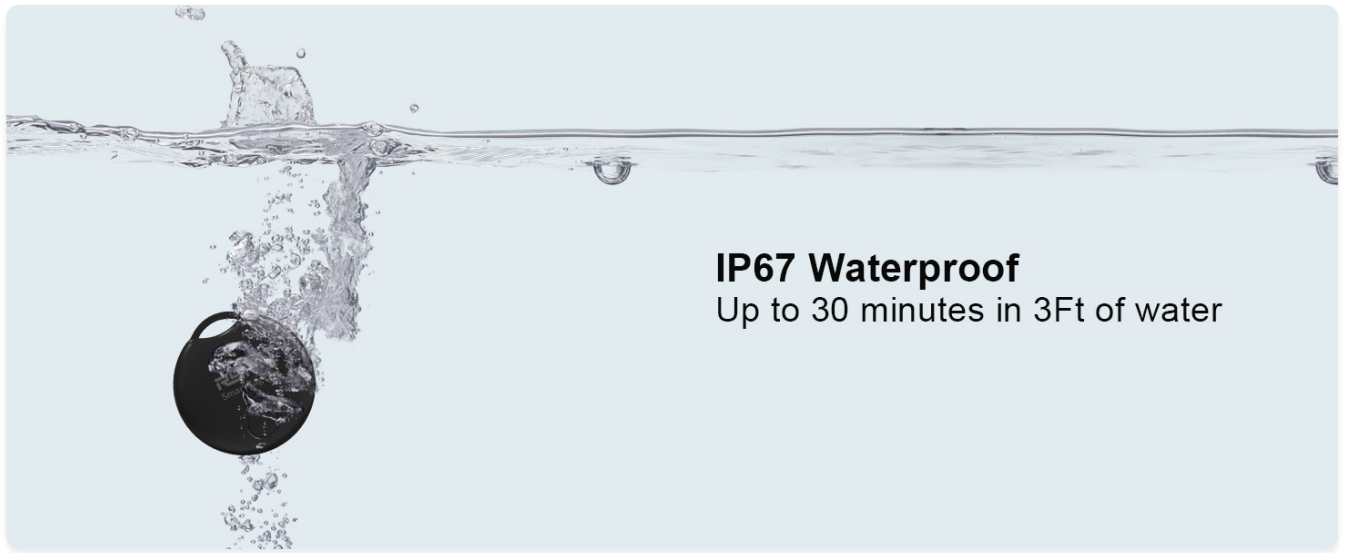


Image: Battery replacement illustration.

### 6.2 Water Resistance

The RSH Smart Tag is IP67 waterproof, meaning it can withstand submersion in up to 3 feet (1 meter) of water for up to 30 minutes. While it is water-resistant, it is not recommended for prolonged submersion or use in extreme water conditions.





**IP67 Waterproof**  
Up to 30 minutes in 3Ft of water

Image: Water resistance demonstration.

## 7. TROUBLESHOOTING

- **Tag Not Connecting:** Ensure the battery tab has been removed and the tag is powered on. Verify Bluetooth is enabled on your iOS device. Try restarting your device and the Find My app.
- **No Sound from Tag:** Check the battery level in the Find My app. If low, replace the battery. Ensure your device's volume is up.
- **Inaccurate Location:** Location accuracy depends on the density of Apple devices in the area. In remote locations, updates may be less frequent. Ensure your device has a stable internet connection.
- **Battery Drains Quickly:** Ensure the tag is not constantly being searched for or playing sound unnecessarily. Replace with a fresh, high-quality CR2032 battery.

## 8. WARRANTY AND SUPPORT

For warranty information, technical support, or any inquiries regarding your RSH Key Finder Tracker, please refer to the contact information provided on the product packaging or visit the official RSH website. Keep your purchase receipt for warranty claims.