

Dollarfix EF18

Dollarfix EF18 OBD2 Scanner Instruction Manual

Model: EF18

1. INTRODUCTION

This manual provides detailed instructions for the proper use and maintenance of your Dollarfix EF18 OBD2 Scanner. Please read this manual thoroughly before operating the device to ensure correct usage and to prevent damage.

The Dollarfix EF18 is a diagnostic tool designed to read and clear engine fault codes, display live data, and perform various diagnostic tests on OBDII/EOBD/CAN compliant vehicles manufactured after 1996.

2. PRODUCT OVERVIEW

2.1 Device Components

The Dollarfix EF18 OBD2 Scanner features a compact design with a clear LCD screen and intuitive controls.



Image 1: Front view of the Dollarfix EF18 OBD2 Scanner, showing the display screen, navigation buttons (up, down, OK, back), and the OBD2 connector cable.

2.2 Key Features

- **Full OBD2 Functions:** Reads and clears Diagnostic Trouble Codes (DTCs), turns off the Check Engine Light (MIL).
- **Live Data Stream:** Displays real-time vehicle sensor data in text and graph format.
- **Freeze Frame Data:** Captures a snapshot of vehicle conditions when an emission-related fault occurs.
- **I/M Readiness Status:** Checks the operational status of the emission system monitors.
- **O2 Sensor Test:** Retrieves and views O2 sensor monitor test results.
- **EVAP System Test:** Initiates a leak test for the vehicle's EVAP system.
- **Vehicle Information:** Retrieves VIN, CIN, and CVN.
- **Battery Voltage Monitor:** Displays real-time 12V battery voltage.
- **Multi-language Support:** Supports eight languages.

- **Plug-and-Play Operation:** No external power or batteries required for basic functions.



Image 2: The Dollarfix EF18 scanner screen showing icons for various functions including Read Code, Clear Code, Live Data, I/M Readiness, Vehicle Info, Freeze Frame, EVAP Monitor Test, O2 Monitor Test, and On-board Monitor Test.

3. SETUP

The Dollarfix EF18 scanner is designed for plug-and-play operation. Follow these steps to begin using the device:

1. **Locate the OBD2 Port:** The OBD2 port is typically located under the dashboard on the driver's side. Refer to your vehicle's owner's manual for the exact location.
2. **Connect the Scanner:** Plug the EF18 scanner's OBD2 connector into your vehicle's OBD2 port.
3. **Turn on Vehicle Ignition:** Turn the vehicle's ignition to the "ON" position (engine can be off or running, depending on the test). The scanner will power on automatically.
4. **Start Diagnosis:** The scanner will automatically link to the vehicle's computer. Once linked, you can navigate the menu to select desired diagnostic functions.

Easy-to-use OBDII Diagnostic Tool

Refer to the following location to find the OBD2 interface



STEPS 1

Plug into OBD2 Port



STEPS 2

Turn on the car



STEPS 3

Start diagnosis

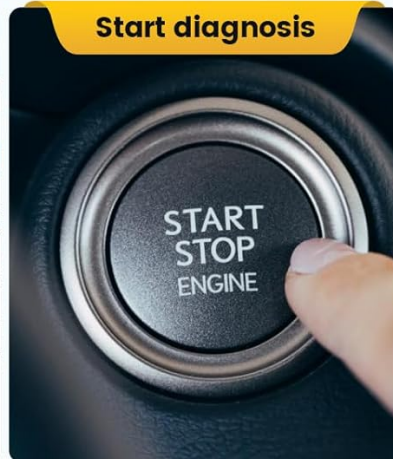


Image 3: Visual guide showing three steps: 1. Plug into OBD2 Port, 2. Turn on the car (ignition), 3. Start diagnosis by pressing the start engine button.

4. OPERATING INSTRUCTIONS

Use the navigation buttons (Up, Down, OK, Back) on the device to select and confirm menu options.

4.1 Reading and Clearing Codes

1. From the main menu, select "OBDII/EOBD".
2. Choose "Read Codes" to view current, pending, or historic Diagnostic Trouble Codes (DTCs).
3. To clear codes, select "Clear Codes". Confirm the action when prompted. *Note: Clearing codes will also turn off the Check Engine Light (MIL) and erase freeze frame data. Ensure you have recorded any necessary information before clearing codes.*

4.2 Live Data Stream

This function displays real-time data from the vehicle's sensors.

1. From the "OBDII/EOBD" menu, select "Live Data".
2. You can view data in text format or graphical format for selected parameters.

4.3 I/M Readiness Status

Checks if the various emission-related systems on the vehicle are operating correctly and are ready for inspection and maintenance testing.

1. From the "OBDII/EOBD" menu, select "I/M Readiness".
2. The screen will display the status of various monitors (e.g., Misfire Monitor, Fuel System Monitor, O2 Sensor Monitor). "OK" indicates the monitor has completed its test, "INC" indicates incomplete, and "N/A" indicates not applicable.

4.4 Battery Voltage Monitor

Allows for a quick check of the vehicle's 12V battery voltage.

1. From the main menu, select "Battery".
2. The current battery voltage will be displayed on the screen.

Accurate & Fast OBD2 Code Reader

a good partner for your car



Image 4: The Dollarfix EF18 scanner connected to a vehicle, illustrating its capability to perform Oxygen Sensor Test, EVAP System Test, and I/M Ready State checks.



Image 5: The Dollarfix EF18 scanner screen showing a DTC Lookup function (P0006), alongside icons representing DTC Reading & Clearing, Live Data Monitor, Freeze Frame, Battery Voltage Display, and Read Vehicle Information.

5. MAINTENANCE

- **Cleaning:** Use a soft, dry cloth to clean the scanner's exterior. Do not use abrasive cleaners or solvents.
- **Storage:** Store the device in a dry, cool environment, away from direct sunlight and extreme temperatures.
- **Cable Care:** Avoid bending or twisting the OBD2 cable excessively. Ensure the connector is clean and free of debris before plugging it into the vehicle.

6. TROUBLESHOOTING

- **Scanner Does Not Power On:**

- Ensure the OBD2 connector is securely plugged into the vehicle's port.
 - Verify the vehicle's ignition is in the "ON" position.
 - Check the vehicle's fuse for the OBD2 port (consult your vehicle's manual).
- **Linking Error / Communication Failure:**
 - Confirm the vehicle is OBDII compliant (most vehicles after 1996).
 - Ensure the ignition is "ON" and the engine is off or running as required by the test.
 - Check for any loose connections.
 - Try connecting to a different OBDII compliant vehicle to rule out scanner malfunction.
- **"DTCs Not Found" Message:**
 - This indicates that no Diagnostic Trouble Codes are currently stored in the vehicle's computer.

7. SPECIFICATIONS

Feature	Detail
Model	EF18
Brand	Dollarfix
Compatibility	OBDII/EOBD/CAN compliant vehicles (most after 1996)
Supported Protocols	ISO14230-4 KWP, ISO15765-4 CAN, ISO9141-2, J1850 VPW, SAE J1850 PWM
Display	Backlit LCD screen
Power Source	Vehicle OBD2 port (powered by vehicle's 12V battery, no internal battery required for operation)
Dimensions	6.69 x 2.76 x 2.76 inches (17.0 x 7.0 x 7.0 cm)
Weight	260 g
Languages Supported	8 languages

Why Choose Dollarfix EF18

Easy to carry – no need for network and batteries



Easy to operate
only 4 buttons



Clearer screen
LCD screen with backlight



Since 1996
Compatible with 98% of vehicles



Free switching
Supports 9 languages



Suitable for novices & everyone who needs to change equipment

Image 6: The Dollarfix EF18 scanner shown with its compact size, clear backlit LCD screen, simple 4-button operation, and flags representing its 8-language support. It also emphasizes compatibility with vehicles since 1996.

8. WARRANTY AND SUPPORT

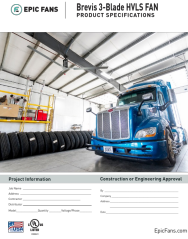
For warranty information and technical support, please refer to the contact details provided with your product packaging or visit the official Dollarfix website.

Manufacturer: Dollarfix

ASIN: B0CWLDMC1P

UPC: 768297280023

Related Documents - EF18



Brevis 3-Blade HVLS FAN Product Specifications | Epic Fans

Comprehensive product specifications for the Epic Fans Brevis 3-Blade HVLS FAN, detailing electrical sizing, construction materials, safety features, mounting options, control systems, model variations, warranty, and AMCA performance data for industrial and commercial ventilation.