

Manuals+

[Q & A](#) | [Deep Search](#) | [Upload](#)

Manuals.plus /

- › [Reyke](#) /
- › Reyke Smart Tag User Manual

Reyke HB02

Reyke Smart Tag User Manual

Model: HB02

INTRODUCTION

The Reyke Smart Tag is a compact and versatile item locator designed to help you keep track of your valuables. Utilizing Apple's Find My network, this device allows you to effortlessly locate items such as keys, luggage, backpacks, and wallets directly from your iOS device. Its durable, waterproof design and long-lasting replaceable battery ensure reliable performance in various environments.



Image: Two Reyke Smart Tags, showcasing their compact, circular design in white.

Your browser does not support the video tag.

Video: An overview of the Reyke Smart Tracker's features and how it helps locate items.

SETUP GUIDE

Follow these steps to connect your Reyke Smart Tag to your Apple device.

1. Prepare Your Device

- Ensure your iOS device (iPhone, iPad, or Mac) is updated to the latest version of iOS, iPadOS, or macOS. iOS 17 or later is recommended for full functionality, especially for item sharing.
- Turn on Bluetooth on your iPhone or iPad.
- Press the button on the Reyke Smart Tag to activate it. You should hear a ringing chime, indicating it's ready for pairing.

Your browser does not support the video tag.

Video: Detailed steps on how to connect the Reyke Smart Tag with your smartphone.

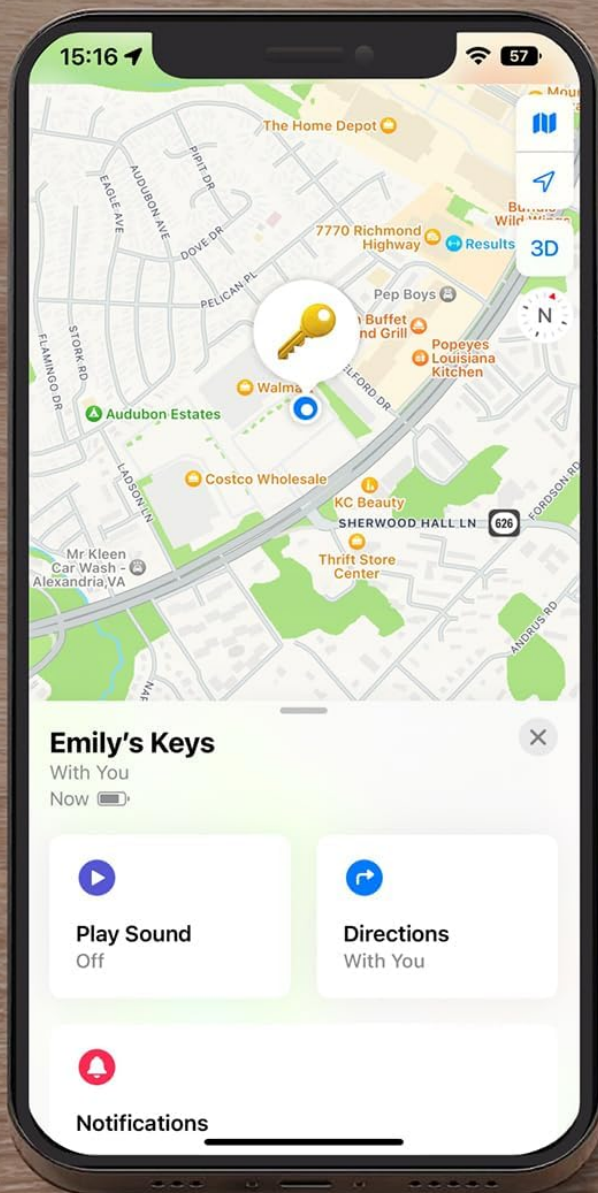
2. Add to Find My App

1. Open the **Find My** app on your supported iPhone or iPad.
2. Navigate to the **Items** tab.
3. Tap on **Add Item** or the **+** icon.
4. Select **Other Supported Items**.

5. Place your Reyke Smart Tag close to your phone. Wait for "iTag" to appear, then tap **Connect**.
6. Follow the on-screen prompts to name your item and select an emoji to represent it. Tap **Continue**.
7. Tap **Finish** to complete the setup. Your Reyke Smart Tag is now linked to your Apple ID and ready for use.

Works with Apple Find My Network

Support Find My app on your iPhone, iPad, Mac or the Find Items app on Apple Watch



Note: Android devices are not supported.

Image: The Reyke Smart Tag seamlessly integrates with the Apple Find My network for easy tracking.

Finding Nearby Items (Play Sound)

When your Reyke Smart Tag is within Bluetooth range (up to 164 feet or 50 meters), you can make it play a sound to help you locate it.

1. Open the **Find My** app.
2. Select the Reyke Smart Tag you wish to locate from the **Items** tab.
3. Tap **Play Sound**. The tag will emit a loud beep (90-100dB) to guide you to its location.
4. Tap **Stop Sound** once you have found your item.



Image: Use the 'Play Sound' feature in the Find My app to locate your Reyke Smart Tag when it's nearby.

Tracking Items (Directions)

If your item is not within Bluetooth range, you can view its last known location on a map and get directions to it.

1. Open the **Find My** app.
2. Select the Reyke Smart Tag from the **Items** tab.
3. Tap **Directions** to open the Maps app and receive navigation to the tag's last reported location.



Image: Get directions to your Reyke Smart Tag's last known location using the Find My app.

Left-Behind Remind

Receive instant notifications on your iPhone if you leave your Reyke Smart Tag behind and it goes out of Bluetooth range.

- This feature is enabled by default. You will receive a notification on your iPhone when the tag is no longer detected near you.
- You can view the tag's recent location on the map within the Find My app.

Left-Behind Remind

When tracker is out of Bluetooth range, your iPhone will receive a notification



TIME SENSITIVE

now

"Emily's Keys" left behind

This item is no longer detected near you. It was last seen near 7702 Richmond Hwy.



Image: An example of a 'Left-Behind Remind' notification on an iPhone.

Lost Mode

If your Reyke Smart Tag is lost, you can activate Lost Mode to increase your chances of finding it. The vast Apple Find My network can help locate your item.

1. Open the **Find My** app.
2. Select the lost Reyke Smart Tag from the **Items** tab.

3. Scroll down and tap **Enable** under **Lost Mode**.
4. Follow the instructions to enter a contact phone number or email address. If someone finds your tag, they can use an NFC-enabled smartphone to view your contact information.
5. You will automatically receive a notification when your lost tag is detected by an Apple device in the Find My network.

Activate Anti-Lost Mode

Retrieve owner information via the "Identify Found Item" feature on "Find My"



Image: Activating Lost Mode allows others to identify your contact information if they find your tag.

[Share This Item \(iOS 17+\)](#)

With iOS 17 or later, you can share your Reyke Smart Tag with up to 5 other individuals, allowing them to also track the item's location.

1. Ensure your iOS device is updated to iOS 17 or later.
2. Open the **Find My** app.
3. Select the Reyke Smart Tag you wish to share.
4. Tap **Share This Item** and follow the prompts to add borrowers.
5. Note: Borrowers will not receive tracking notifications as the item moves with them.

Share This Item in Find My

You can share an item in Find My so the borrower can see it on a map and find it. Up to 5 borrowers can be shared in addition to yourself.

People you're sharing items with don't receive tracking notifications when the items are moving with them.



Note: Please ensure your iPhone, iPad, iMac is updated to iOS 17.

Image: The 'Share This Item' feature allows multiple users to track a single Reyke Smart Tag.

MAINTENANCE

Battery Replacement

The Reyke Smart Tag uses a replaceable battery that can last up to 1 year. When the battery is low, you will receive a notification in the Find My app.

To replace the battery:

1. Locate the battery compartment on the back of the Reyke Smart Tag.
2. Use a small tool (e.g., a coin) to twist open the battery cover.
3. Remove the old battery and insert a new CR2032 coin cell battery with the positive (+) side facing up.
4. Replace the battery cover and twist to secure it.

IP67 Waterproof & Dust Resistant

The Reyke Smart Tag is rated IP67, meaning it is resistant to dust and can withstand immersion in water up to 3 feet (1 meter) for 30 minutes. This makes it suitable for outdoor activities and provides protection against splashes, rain, and brief submersion.



Image: The Reyke Smart Tag is designed to be water and dust resistant for durability.

TROUBLESHOOTING

Resetting Your Reyke Smart Tag

If you need to connect your Reyke Smart Tag to a new device or are experiencing connectivity issues, you may need to reset it. Ensure the tag is first removed from your Apple ID in the Find My app before resetting.

1. Open the **Find My** app on your iPhone or iPad.
2. Go to the **Items** tab and select the Reyke Smart Tag you wish to reset.
3. Swipe left on the item to reveal the **Remove Item** icon (red trash can). Tap it.
4. Confirm by tapping **Remove**. This will unlink the tag from your Apple ID.
5. Once removed from the app, quickly press the button on the Reyke Smart Tag four times, then hold it down for the fifth press until you hear a ringing chime. This indicates a successful reset.

Your browser does not support the video tag.

Video: Instructions on how to reset your Reyke Smart Tag before connecting it to a new device.

Common Issues

- **Tag not appearing in Find My:** Ensure Bluetooth is on, the tag is activated (press button), and it's close to your device. Try resetting the tag if issues persist.
- **Sound is too low:** Check for obstructions around the tag. The sound level is 90-100dB, but can be muffled if covered.
- **Battery draining quickly:** Ensure you are using a fresh, high-quality CR2032 battery. Excessive use of the "Play Sound" feature can also reduce battery life.
- **Android devices not supported:** The Reyke Smart Tag works exclusively with Apple's Find My network and iOS devices.

Android devices are not compatible.

SPECIFICATIONS

Feature	Detail
Model Number	HB02
Brand	Reyke
Connectivity	Bluetooth
Compatible Devices	iPhone, iPad, Mac (iOS Only)
Water Resistance	IP67 (up to 3 feet for 30 minutes)
Battery Type	CR2032 Lithium Metal (replaceable)
Battery Life	Up to 1 year
Bluetooth Range	Up to 164 feet (50 meters)
Loudness	90-100dB
Material	Acrylonitrile Butadiene Styrene (ABS)
Item Weight	1.06 ounces
Package Dimensions	5.12 x 2.56 x 0.67 inches
Country of Origin	China

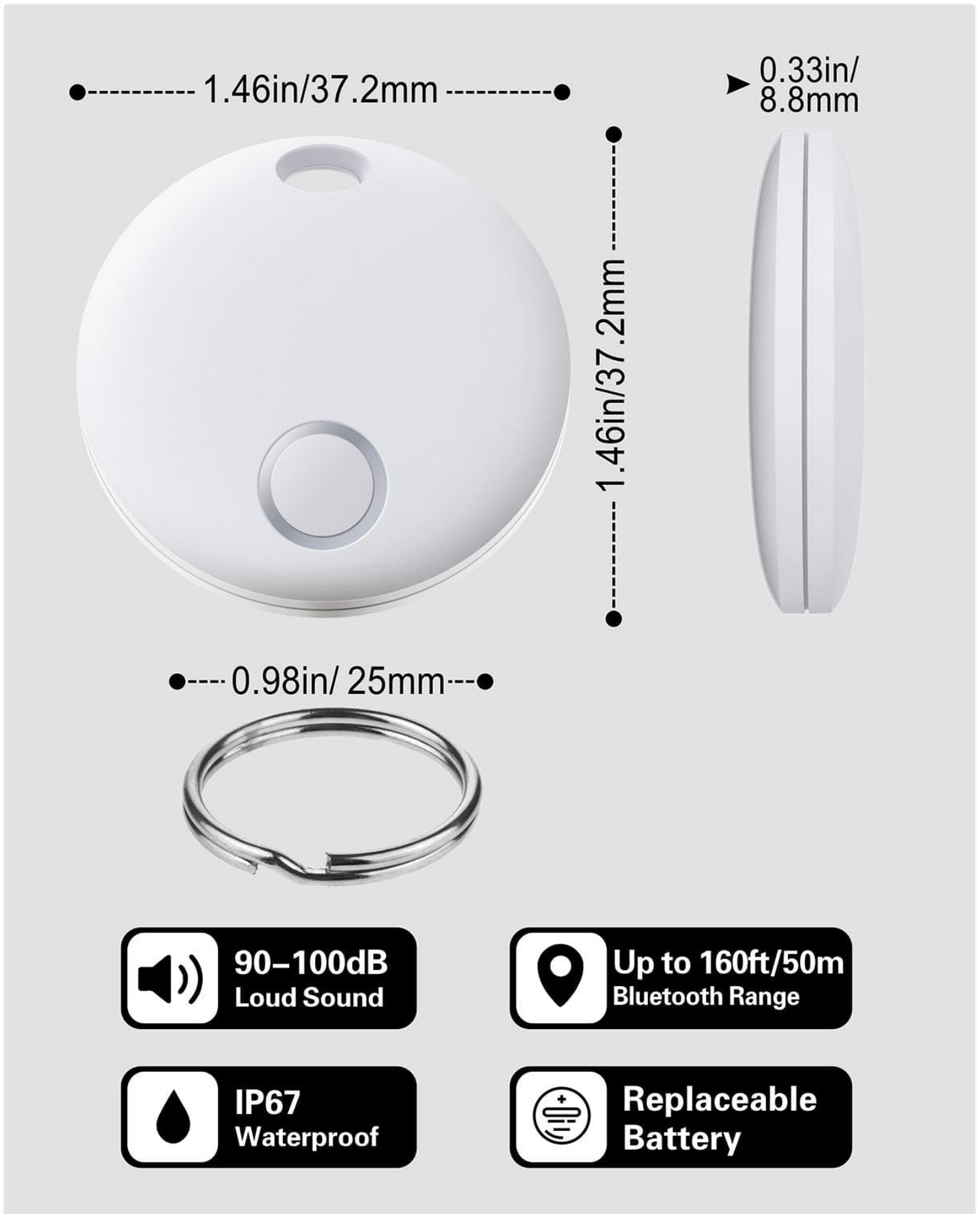


Image: Key specifications and dimensions of the Reyke Smart Tag.

WARRANTY AND SUPPORT

For warranty information, please refer to the documentation included with your purchase or contact the retailer. Reyke is committed to customer satisfaction.

If you require further assistance or have any questions regarding your Reyke Smart Tag, please contact our after-sales support team. Contact details can typically be found on the product packaging or the official Reyke website.

