

Manuals+

[Q & A](#) | [Deep Search](#) | [Upload](#)

manuals.plus /

- › [SGVFG32AF3SSSSSFD](#) /
- › [SGVFG32AF3SSSSSFD PR100 Trail Camera User Manual](#)

SGVFG32AF3SSSSSFD PR100

SGVFG32AF3SSSSSFD PR100 Trail Camera User Manual

Model: PR100

1. INTRODUCTION

The SGVFG32AF3SSSSSFD PR100 Trail Camera is a high-performance digital camera designed for scouting game, wildlife observation, home security, and farm monitoring. It features a 12MP photo resolution, 1080P video recording, and a rapid 0.8-second trigger time. Equipped with 940nm black IR LEDs, it provides clear night vision without disturbing wildlife. Its robust, waterproof design ensures reliable operation in various outdoor conditions.



Image 1.1: Various applications of the PR100 Trail Camera, including hunting, farm monitoring, wild animal observation, and home monitoring.

2. SAFETY INFORMATION

- Do not attempt to disassemble or modify the camera. Unauthorized modifications can void the warranty and cause damage.
- Use only specified power sources (4 AA batteries or DC 5V). Incorrect power sources can damage the device.
- Ensure the battery compartment is sealed properly to maintain IP56 waterproof rating.
- Keep the camera away from extreme temperatures and direct sunlight for prolonged periods.
- Dispose of batteries responsibly according to local regulations.
- Avoid pointing the camera directly at the sun or other strong light sources, as this may damage the image sensor.

3. PACKAGE CONTENTS

Please check the package contents upon opening to ensure all items are present and in good condition:

- 1 x SGVFG32AF3SSSSSFD PR100 Hunting Camera
- 1 x USB Data Cable
- 1 x Card Reader
- 1 x Mounting Bandage
- 1 x Instruction Manual (this document)

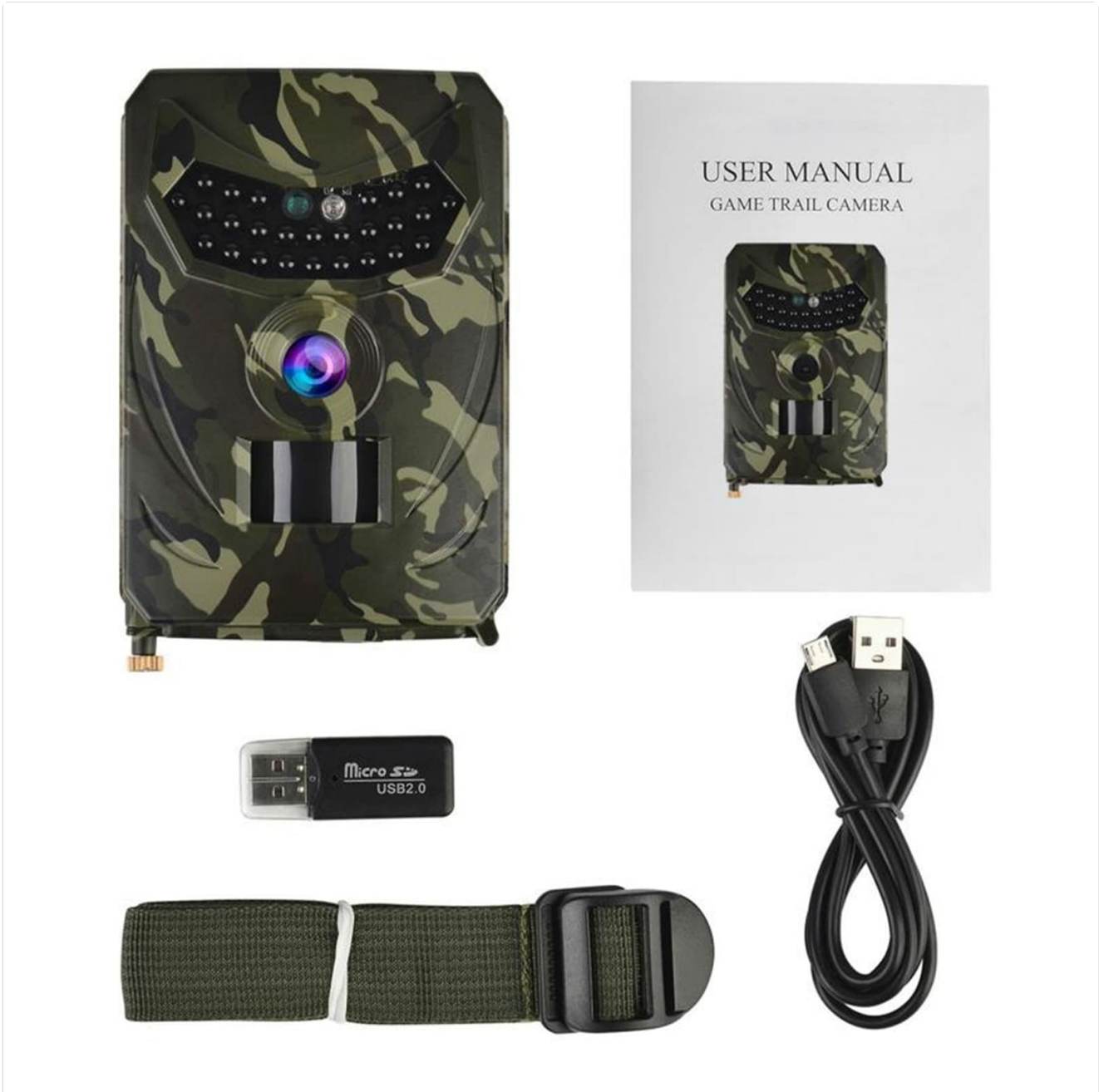


Image 3.1: The complete package contents of the PR100 Trail Camera.

4. PRODUCT OVERVIEW

Familiarize yourself with the main components of your PR100 Trail Camera:

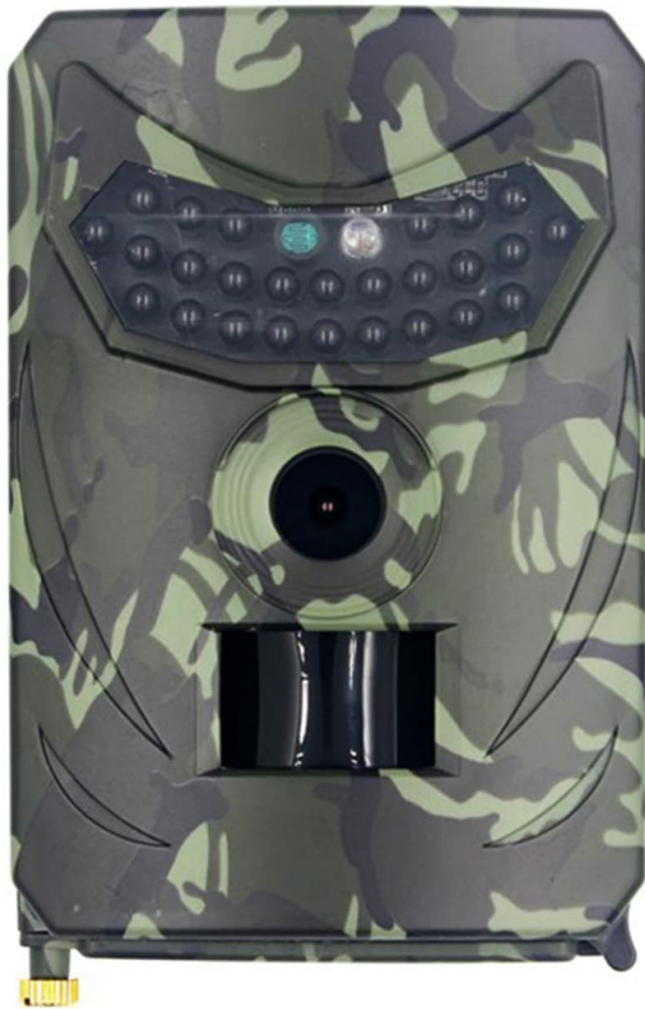


Image 4.1: Front view of the PR100 Trail Camera.

1. **IR LEDs:** 26pcs 940nm black lights for night vision illumination.
2. **Lens:** Wide 120-degree lens for capturing a broad field of view.
3. **PIR Sensor:** Passive Infrared sensor for motion detection (110-degree angle, 10M distance).
4. **Indicator Lights:** Status indicators (e.g., power, activity).
5. **Battery Compartment:** Located at the back, holds 4 AA batteries.
6. **Micro SD Card Slot:** For memory card insertion (Max 32GB).
7. **USB Slot:** 5pins USB 2.0 for data transfer and external power.
8. **Mounting Thread:** Standard thread for tripod or mounting accessories.



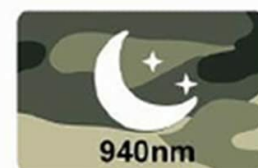
Full HD 1080P



Trigger Time



Wide Angle



Night Vision

Image 4.2: Key features highlighted: 12MP photo, 1080P video, 0.8s trigger, 120° wide angle, and 940nm night vision.

5. SETUP

5.1 Battery Installation

The PR100 camera operates on 4 AA batteries or an external DC 5V power supply.

1. Open the battery compartment latch on the side or back of the camera.
2. Insert 4 AA batteries, ensuring correct polarity (+/-) as indicated inside the compartment.
3. Close the battery compartment securely to ensure waterproof sealing.

Note: For optimal performance and longer standby time (up to 12 months), use high-quality alkaline or rechargeable AA batteries. The camera can also be powered via a DC 5V external power source connected to the USB slot.

5.2 Memory Card Installation

A Micro SD card (up to 32GB) is required to store photos and videos.

1. Locate the Micro SD card slot, usually on the side or bottom of the camera.
2. Insert the Micro SD card with the gold contacts facing down (or as indicated by the slot diagram) until it clicks into place.
3. To remove, gently push the card in until it clicks, then release, and it will spring out.

Important: Format the Micro SD card in the camera's settings menu before first use to ensure compatibility and optimal performance.

5.3 Mounting the Camera

The camera can be mounted using the included bandage or a standard tripod mount.

1. **Using the Bandage:** Thread the provided bandage through the slots on the back of the camera and secure it around a tree or pole. Adjust the camera angle as needed.
2. **Using a Tripod:** Screw the camera onto a standard tripod or mounting bracket using the threaded hole at the bottom.

Tip: Position the camera at a height of approximately 1-2 meters (3-6 feet) and aim it towards the area you wish to monitor. Ensure there are no obstacles directly in front of the PIR sensor that could cause false triggers.



Waterproof: IP56

6. OPERATING THE CAMERA

6.1 Powering On/Off

- **Power On:** Locate the power switch (usually inside the camera compartment or on the side) and slide it to the "ON" position. The indicator light may flash briefly.
- **Power Off:** Slide the power switch to the "OFF" position.

6.2 Work Modes

The PR100 supports various work modes, typically configured via the internal display and buttons (if available) or by connecting to a computer.

- **Photo Mode:** Captures still images when triggered. Default resolution is 12MP (4032x3024).
- **Video Mode:** Records video clips when triggered. Default resolution is FHD 1920x1080P at 25FPS.
- **Photo + Video Mode:** Captures a set number of photos (e.g., 3 photos) followed by a video clip (e.g., 10 seconds video) per trigger event.

6.3 Basic Settings (Via Internal Display/Buttons or PC)

Access the camera's menu to configure settings such as:

- **Mode:** Select Photo, Video, or Photo + Video.
- **Photo Resolution:** Adjust image quality (e.g., 12MP, 8MP, 5MP).
- **Video Resolution:** Adjust video quality (e.g., 1080P, 720P).
- **PIR Interval:** Set the delay between triggers to avoid excessive recordings.
- **Sensitivity:** Adjust PIR sensor sensitivity (High, Medium, Low).
- **Time Stamp:** Enable/disable date and time overlay on photos/videos.
- **Working Time:** Set specific hours for the camera to be active.
- **Loop Recording:** Enable/disable overwriting of oldest files when memory card is full.
- **Format SD Card:** Erase all data on the Micro SD card.

Refer to the on-screen menu (if applicable) or the detailed instructions provided with the camera for specific navigation and setting adjustments.

7. MAINTENANCE

- **Cleaning:** Use a soft, dry cloth to clean the camera body. For the lens, use a lens cleaning cloth and solution. Do not use abrasive cleaners.
- **Battery Replacement:** Replace batteries when the low battery indicator appears or when performance degrades. Always replace all batteries at once with new ones of the same type.
- **Memory Card Management:** Regularly back up important data from the Micro SD card to a computer. Format the card periodically to maintain optimal performance and prevent data corruption.
- **Storage:** When not in use for extended periods, remove batteries and store the camera in a cool, dry place away from direct sunlight.

8. TROUBLESHOOTING

Problem	Possible Cause	Solution
Camera not powering on	Low or dead batteries; Incorrect battery polarity; Power switch off.	Replace batteries; Check battery orientation; Ensure power switch is ON.
No photos/videos recorded	No Micro SD card; Full Micro SD card; Incorrect mode setting; PIR sensor blocked or sensitivity too low.	Insert Micro SD card; Delete old files or use new card; Set to Photo/Video mode; Clear sensor path, increase sensitivity.
Poor image/video quality	Dirty lens; Low light conditions; Incorrect resolution setting.	Clean lens; Ensure adequate lighting or use night vision; Set to highest resolution.
False triggers	Camera facing moving branches/grass; PIR sensitivity too high; Heat sources in detection area.	Reposition camera; Decrease PIR sensitivity; Avoid placing near heat vents or reflective surfaces.
Water ingress	Battery compartment not sealed properly.	Ensure all latches and seals are firmly closed after battery/card installation.

9. SPECIFICATIONS

Feature	Detail
Image Sensor	3MP Color CMOS
Photo Resolution	12MP (4032x3024)
Video Resolution	FHD 1920x1080P 25FPS
Trigger Time	0.8 seconds
Work Mode	3 Photos + 10s Video
PIR Angle	110 degrees
Lens Angle	Wide 120 degrees
IR LEDs	26pcs 940nm black Lights
IR Distance	10-15 meters
PIR Distance	10 meters
Memory	Max Micro SD 32GB
USB Slot	5pins USB 2.0
Power Supply	4 AA batteries or DC 5V
Waterproof Rating	IP56
Stand-by Time	12 Months
Stand-by Current	0.01mA
Operating Temperature	-10°C to +70°C (-14°F to +158°F)

Feature	Detail
Special Features	Local Recording, Motion Sensor, Night Vision, Time Stamp, Loop Recording

10. WARRANTY AND SUPPORT

The manufacturer, SGVFG32AF3SSSSFD, provides a warranty for this product. Please refer to the specific warranty terms and conditions provided at the time of purchase or contact the seller for details.

For technical support, troubleshooting assistance, or inquiries regarding your PR100 Trail Camera, please contact the seller or manufacturer directly. You can typically find contact information on the product packaging or the retailer's website.

As stated in the product features, if you encounter a problem during the purchase process or product use, you can always contact us via email and Q&A function. We aim to reply within 0-6 hours to solve the problem for you.