

[Manuals.plus](#) /

> [LELO](#) /

> LELO F1S V3 XL User Manual

## LELO 12002

# LELO F1S V3 XL User Manual

Model: 12002

## INTRODUCTION

The LELO F1S V3 XL is an advanced male pleasure console designed for an immersive and customizable experience. Featuring Sensonic™ technology, dual motors, and app connectivity, it offers a range of sensations and interactive modes. This manual provides essential information for the safe and effective use, maintenance, and care of your device.

## WHAT'S INCLUDED

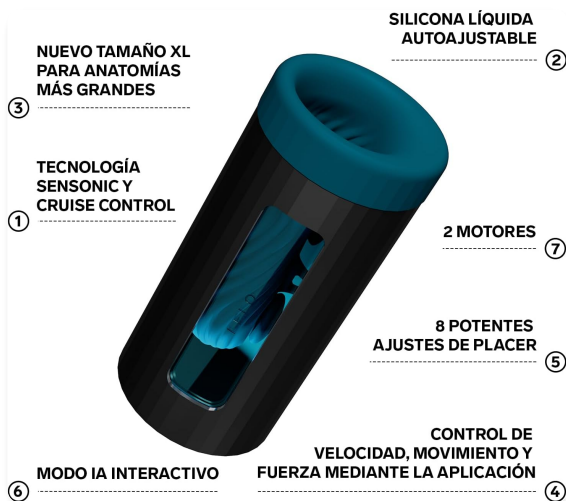


The LELO F1S V3 XL package typically includes the following items:

- LELO F1S V3 XL Pleasure Console
- User Manual
- USB Charging Cable
- Warranty Registration Card
- Sachet of Personal Moisturizer (5 ml / 0.17 fl. oz.)

Please ensure all components are present before first use. If any items are missing or damaged, contact LELO customer support.

## PRODUCT OVERVIEW



The LELO F1S V3 XL is engineered with several innovative features for an enhanced experience:

- **Sensonic™ & Cruise Control Technology:** Delivers sonic waves for deep, all-around pleasure without requiring thrusting motion. Cruise Control ensures consistent intensity.
- **Auto-Adjustable Liquid Silicone Sleeve:** Provides a smooth, flexible, and realistic feel, adapting to your anatomy.
- **XL Size:** Designed to accommodate larger anatomies for maximum comfort.
- **Dual Motors:** Two synchronized motors stimulate sensitive nerve endings and the shaft for powerful sensations.
- **8 Powerful Pleasure Settings:** Offers a variety of vibration patterns and intensities.
- **Interactive AI Mode:** Reacts to your movements in real-time, adjusting vibrations to match your rhythm.
- **App Connectivity:** Connects via Bluetooth to the LELO app for expanded control, additional modes, and personalized settings.

The device is also 100% waterproof, making it suitable for use in the bath or shower and easy to clean.

## SETUP

### Initial Charging

Before first use, fully charge your LELO F1S V3 XL for 2 hours. Connect the USB charging cable to the device and a compatible USB power source. The LED indicator will show charging status.

### Powering On/Off

- **To Power On:** Press and hold the power button.
- **To Power Off:** Press and hold the power button again.

### Travel Lock

To activate or deactivate the travel lock, press and hold the '+' and '-' buttons simultaneously for 5 seconds. This prevents accidental activation during travel.

## OPERATING INSTRUCTIONS

### Basic Controls

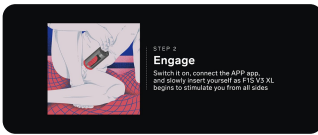
- **Changing Modes:** Briefly press the power button to cycle through the available vibration modes. The LED lights will remain fixed, indicating the vibration level.
- **Adjusting Intensity:** Use the '+' and '-' buttons to increase or decrease the vibration intensity.

### App Connection

To unlock additional configurations and the interactive AI mode, connect your LELO F1S V3 XL to the LELO app via Bluetooth. Download the app from your device's app store and follow the in-app instructions for pairing.

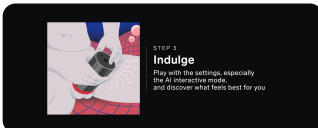
## Usage Steps

### 1. Step 1: Prep



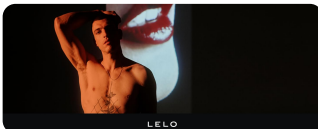
Apply a generous amount of LELO Personal Moisturizer to the internal sleeve of the F1S V3 XL. This ensures a smooth and comfortable experience.

### 2. Step 2: Engage



Switch on the device, connect the app if desired, and slowly insert yourself as the F1S V3 XL begins to stimulate you from all sides.

### 3. Step 3: Indulge



Experiment with the various settings, especially the interactive AI mode, to discover what feels best for you.

## Official Product Video

Your browser does not support the video tag.

This video provides a visual overview of the LELO F1S V3 XL, showcasing its design, features, and how it functions. It highlights the auto-adjusted silicone ribs, app connectivity, and the new AI interactive mode.

## MAINTENANCE AND CARE

### Cleaning

The LELO F1S V3 XL is 100% waterproof, making it easy to clean. After each use, wash the device thoroughly with warm water and a toy cleaner or mild soap. Rinse well and allow it to air dry completely before storing.

### Storage

Store your device in a clean, dry place, away from direct sunlight and extreme temperatures. Keep it separate from other toys made of different materials to prevent damage or degradation.

### Battery Life

The device has a charge/use time of approximately 2 hours. In standby mode, the battery can last up to 90 days.

## SPECIFICATIONS

<b>Model Number</b>	12002
<b>Dimensions (Product)</b>	6.06 x 2.83 x 1.97 inches (154 x 72 x 50 mm)
<b>Weight (Product Only)</b>	1.06 Pounds (320 g)

<b>Insertable Length</b>	120 mm / 4.7 inches
<b>Girth/Diameter Range</b>	42mm - 64mm / 1.65 in - 2.5 inches
<b>Battery Type</b>	1 Lithium Ion battery (included)
<b>Charge Time / Use Time</b>	Approx. 2 hours for both
<b>Standby Mode</b>	Up to 90 days
<b>Water Resistance</b>	100% Waterproof
<b>Safety Certification</b>	ISO 3533 Safety Certified

## TROUBLESHOOTING

If you encounter any issues with your LELO F1S V3 XL, please consider the following common solutions:

- **Device Not Turning On:** Ensure the device is fully charged. If it still doesn't turn on, the travel lock might be activated. Deactivate it by holding the '+' and '-' buttons for 5 seconds.
- **App Connectivity Issues:** Ensure Bluetooth is enabled on your smartphone and the device is within range. Try restarting both the device and the app. If issues persist, try reinstalling the LELO app.
- **Vibration Weak or Inconsistent:** Check the battery level and recharge if necessary. Ensure the device is clean and free of debris.

For further assistance, refer to the official LELO website or contact LELO customer support.

## WARRANTY AND SUPPORT

LELO products are manufactured to the highest standards and come with a comprehensive warranty. Please refer to the Warranty Registration Card included in your package or visit the official LELO website for detailed warranty information and to register your product.

For technical support, product inquiries, or warranty claims, please contact LELO customer service through their official website or the contact information provided in your product documentation.

A Certificate of Compliance for this product is available for download: [Certificate of Compliance \(PDF\)](#).