

[Manuals.plus](#) /

› [PILSAMAS](#) /

› PILSAMAS WiFi Caregiver Call Button CF101W Instruction Manual

## PILSAMAS CF101W

# PILSAMAS WiFi Caregiver Call Button CF101W Instruction Manual

Model: CF101W | Brand: PILSAMAS



## 1. INTRODUCTION

---

This manual provides detailed instructions for the setup, operation, and maintenance of your PILSAMAS WiFi Caregiver Call Button (Model CF101W). This device is designed to provide a reliable alert system for individuals requiring care, enabling real-time notifications to caregivers via a smartphone application.

The system offers independence for the user while providing peace of mind for family members and caregivers.

## 2. PRODUCT OVERVIEW

---

The PILSAMAS WiFi Caregiver Call Button is a compact, wireless device that connects to your home's 2.4G Wi-Fi network. When activated, it sends an immediate notification to linked smartphones.



Image: The PILSAMAS WiFi Caregiver Call Button, shown with a smartphone displaying an SOS notification, and an elderly person in the background.

## 2.1 Key Features

- **WiFi Connectivity:** Direct connection to 2.4G Wi-Fi for real-time app notifications.
- **Real-time App Notifications:** Receive instant alerts on your smartphone when the button is pressed.
- **Multi-user Sharing:** Share access with multiple family members or caregivers.
- **Versatile Installation:** Can be worn with a lanyard or attached to a wall using double-sided tape.
- **Long Standby Time:** Up to 6 months operating time on a single charge.
- **Type-C Fast Charging:** Convenient and quick recharging.

## 2.2 Package Contents

Please ensure all items are present:

- PILSAMAS WiFi Caregiver Call Button (Model CF101W)
- Lanyard
- USB Type-C Charging Cable

- Double-sided Tape
- User Manual (this document)

### 3. SETUP INSTRUCTIONS

Follow these steps to set up your PILSAMAS WiFi Caregiver Call Button and connect it to your smartphone.

#### 3.1 Device Components


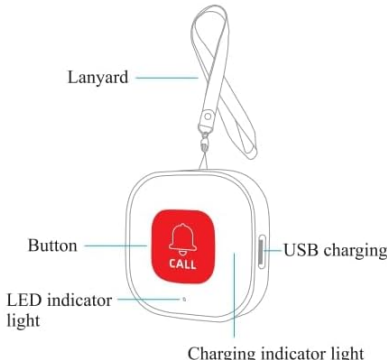


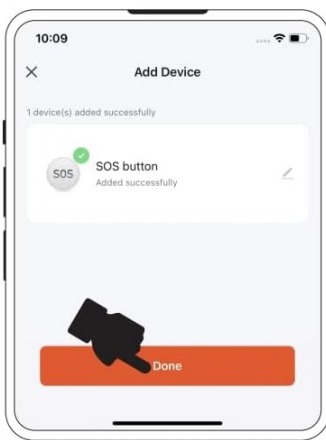


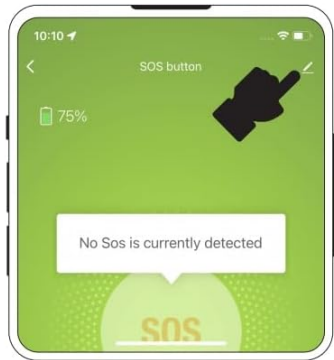
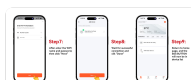
<p style="text-align: center;"><b>Wi-Fi Emergency call button</b></p> <p style="text-align: center;">Instructions</p> 	<p style="text-align: center;"><b>Appearance Introduction</b></p> 	<p style="text-align: center;"><b>Preparation before connecting to the APP</b></p> <p style="text-align: center;">Download APP</p> <div style="display: flex; justify-content: space-around;">   </div> <p style="text-align: center;">Tuya Smart      Smart Life</p> <p>➤ Scan the QR code to download. ➤ Please search for "Tuya Smart (Smart Life)" in the application market to download.</p> <p>The usage of the two apps is similar, just choose one of them.</p>
<p>② Successfully connected, click "Done".</p> 	<p style="text-align: center;"><b>Alarm push notification</b></p> 	<p style="text-align: center;"><b>Multi-person sharing</b></p> <p>① Click on the upper right corner </p> 

Image: A diagram illustrating the physical components of the call button, including the call button itself, LED indicator, charging port, and lanyard attachment point.

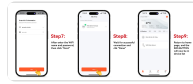
- **Lanyard:** For wearing the button around the neck.
- **Call Button:** The main button to press for alerts.
- **LED Indicator Light:** Shows device status (e.g., pairing, charging).
- **Charging Indicator Light:** Indicates charging status.
- **USB Charging Port:** Type-C port for recharging the device.

#### 3.2 App Download and Account Creation

1. **Download the App:** Scan one of the QR codes below or search for "Tuya Smart" or "Smart Life" in your smartphone's app store. Both apps offer similar functionality; choose one.



Tuya Smart App  
[Download Tuya Smart](#)



Smart Life App  
[Download Smart Life](#)

Image: QR codes for downloading the Tuya Smart and Smart Life applications.

2. **Create an Account:** Open the chosen app and follow the on-screen instructions to register a new account or log in if you already have one.

### 3.3 Connecting to Wi-Fi and Pairing the Device

#### Important Notes:

- The call button only supports **2.4G Wi-Fi networks**. It is not compatible with 5G Wi-Fi.
  - Ensure the call button is within **15 meters (approximately 49 feet)** of your Wi-Fi router for optimal connection stability.
1. **Prepare your Phone:** Connect your smartphone to your 2.4G Wi-Fi network and ensure Bluetooth is turned on.

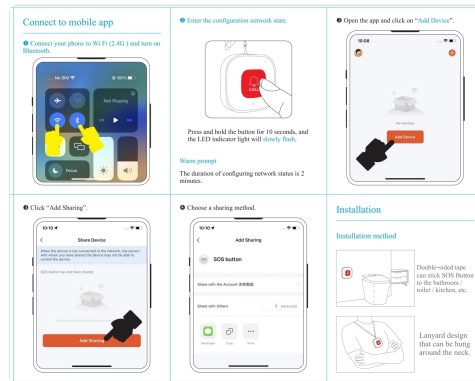


Image: A smartphone screen demonstrating how to enable Wi-Fi (2.4G) and Bluetooth for device pairing.

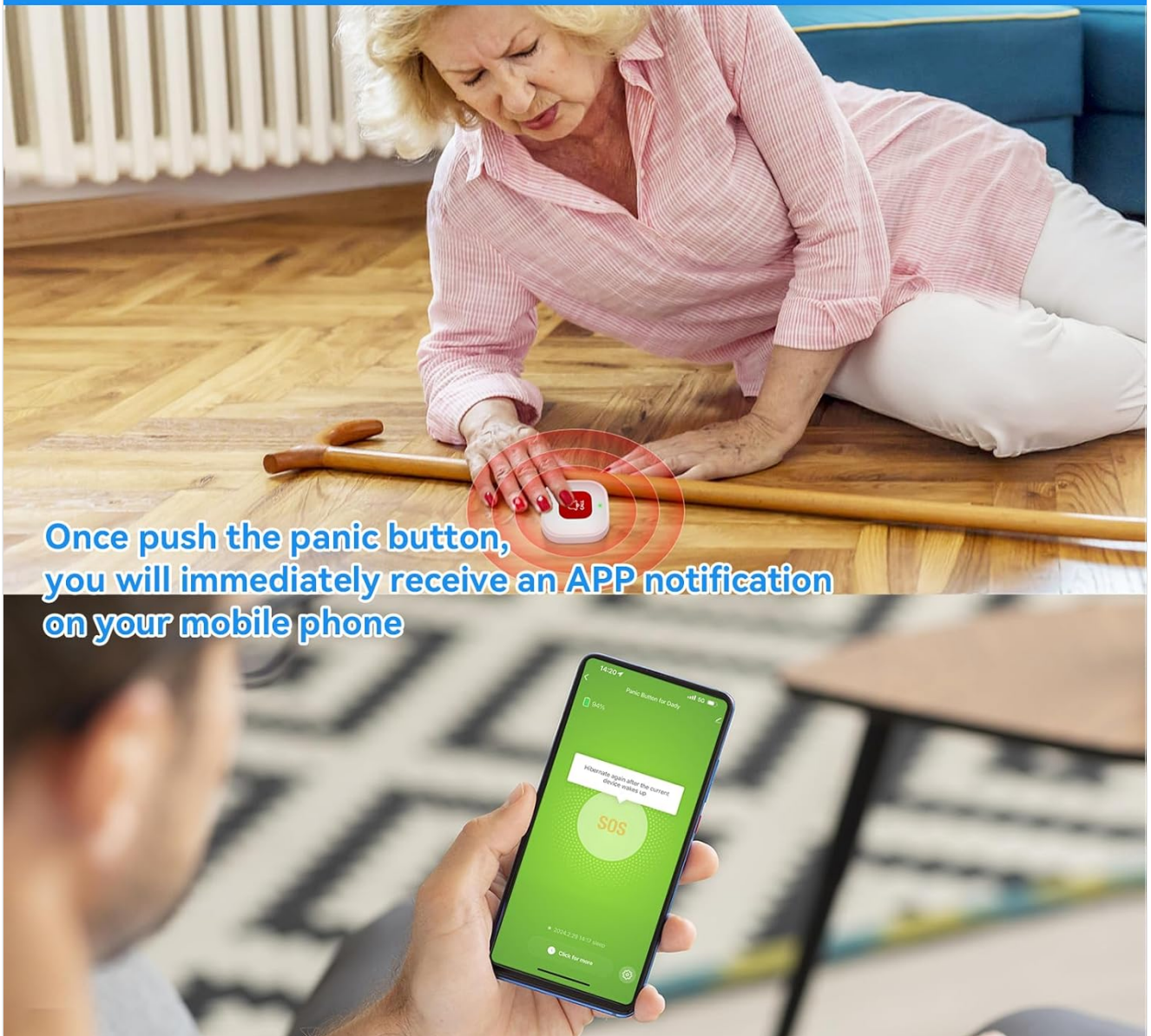
2. **Enter Configuration Network State:** Press and hold the call button on the device for **10 seconds**. The LED indicator light will slowly flash, indicating it's in configuration mode. The duration for this state is 2 minutes.
3. **Add Device in App:** Open the Tuya Smart or Smart Life app.
  - Tap on "Add Device" or the "+" icon.
  - The app should automatically discover the device. If not, select "Add Manually" and search for "SOS Button" or "Panic Button" under the relevant category (e.g., "Security & Video Surveillance" or "Sensors").
4. **Enter Wi-Fi Information:** When prompted, enter your 2.4G Wi-Fi network name (SSID) and password.
5. **Complete Pairing:** Wait for the app to successfully connect the device. Once connected, tap "Done" or "Finish". The SOS button will now appear in your device list within the app.

## 4. OPERATING INSTRUCTIONS

### 4.1 Sending an Alert

To send an alert, simply press the **CALL** button on the device. The LED indicator light will flash quickly to confirm the alert has been sent.

# WiFi Smart Panic Button, Real-time App Notification



Once push the panic button, you will immediately receive an APP notification on your mobile phone

Image: An elderly person on the floor pressing the call button, illustrating how an alert is triggered, with a smartphone displaying the resulting SOS notification.

## 4.2 Receiving Notifications

Once the button is pressed, all linked smartphones will receive a real-time app notification. This notification will appear on your phone regardless of your location, as long as your phone has internet access.



**Smart WIFI Panic Button for Global Use**

No matter you are in another city, state or country, your smartphone can receive the warning alert anywhere.

home → Around the world

The image shows a white square panic button with a red 'CALL' button and a bell icon. A red dashed arrow points from the button to a white Wi-Fi router. Another red dashed arrow points from the router to a hand holding a smartphone displaying an 'SOS' alert. The background is a blue banner with the title.

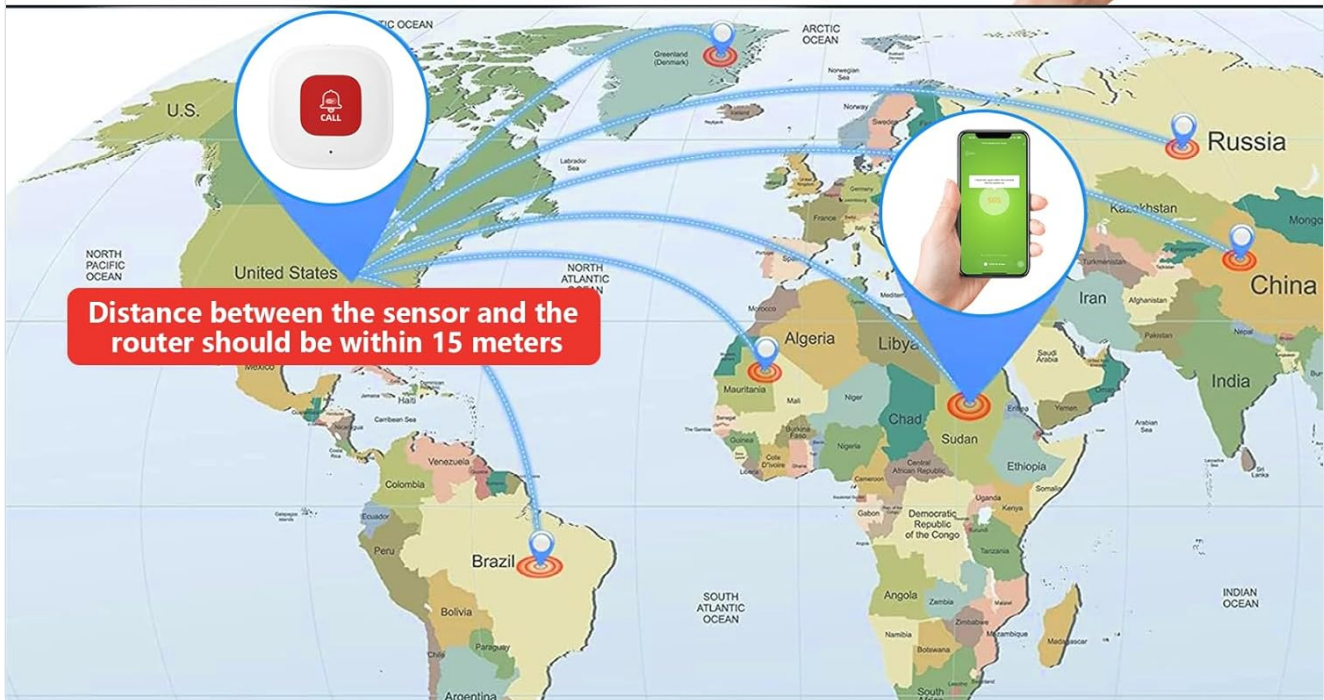


Image: A world map illustrating that the smart panic button can send alerts to a smartphone anywhere globally, provided the button is within 15 meters of its home router.

#### Note on Subscription Services:

- App notifications are free and do not require a monthly fee.
- SMS, phone call, or email alerts may require a separate subscription service, if offered by the app provider.

### 4.3 Multi-User Sharing

The app allows you to share access to the device with other family members or caregivers. This ensures that multiple individuals receive alerts simultaneously.

1. In the app, navigate to the device settings for your PILSAMAS Call Button.
2. Look for a "Share Device" or "Multi-person Sharing" option.
3. Follow the prompts to add other users by their app account details. Once shared, they will also receive alarm messages.

# Multi-user Sharing



Through the sharing function in the App, the person you shared with can also receive alarm MSG.

Image: A smartphone screen demonstrating the multi-user sharing function within the app, allowing multiple individuals to receive alarm messages.

## 4.4 Installation Methods

The call button can be installed in two primary ways:

- **Wearable:** Use the included lanyard to wear the button around the neck.
- **Wall-Mounted:** Use the provided double-sided tape to attach the button to a wall or other flat surface. This is ideal for locations like bathrooms, kitchens, or near a bed.

# Portable, Two Ways to Use

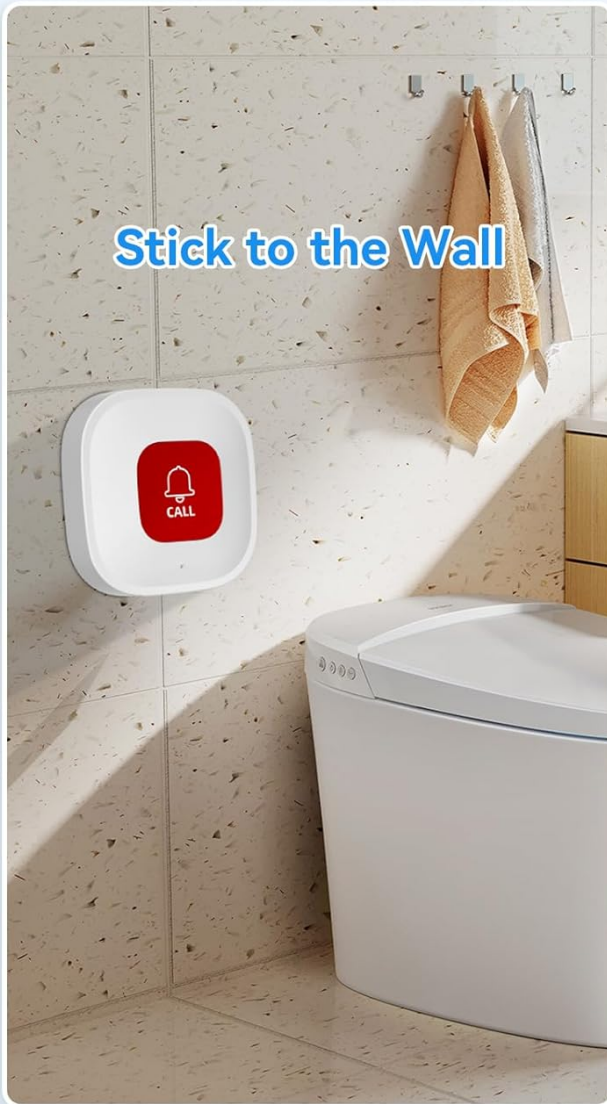


Image: Two panels showing the versatility of the call button: one mounted on a bathroom wall, and another worn around an elderly person's neck with the lanyard.

## 5. MAINTENANCE

### 5.1 Charging the Device

The PILSAMAS Call Button features a built-in Lithium Polymer battery. When the battery level is low, the app will typically notify you. Use the provided USB Type-C cable to charge the device.

- **Charging Time:** Approximately 1 hour for a full charge.
- **Operating Time:** Up to 6 months on a full charge, depending on usage.
- **Battery Type:** 1 Lithium Polymer battery (included), 3.7 Volts.

# TYPE - C FAST CHARGING



Image: The PILSAMAS Call Button connected to a Type-C charging cable, alongside graphics indicating 1-hour charging time, 1 $\mu$ A standby current, and 6 months operating time.

## 5.2 Cleaning

Wipe the device with a soft, dry cloth. Do not use abrasive cleaners or immerse the device in water. The device has an IP55 waterproof rating, meaning it is protected against dust and low-pressure water jets from any direction. It is not designed for submersion.



**Step1:**  
**Download the AAP and create an account**

Scan the QR code or search for "Tuya Smart" or "Smart Life" in the application market to download.

Tips: The usage of the two apps is similar, just choose one of them.



WI-FI 6: 2.4G 802.11 B/G/N20/N40/AX20

≤ 15 meters (open/undisturbed)

**Step2:**  
**Configure the router to ensure there is a 2.4GHz WiFi signal.**

Tips:  
1. Support 2.4G WIFI only  
2. The distance between the SOS button and the router should be within 15 meters.



**Step3:**  
**Connect your phone to WIFI(2.4G) and turn on Bluetooth**

Tips:  
1. Be sure to connect the 2.4G WIFI

Image: The PILSAMAS Call Button shown with icons indicating its IP55 waterproof rating and operating temperature range (-20°C to 50°C).

## 6. TROUBLESHOOTING

Problem	Possible Cause	Solution
Device not connecting to Wi-Fi / App	<ul style="list-style-type: none"> <li>• Incorrect Wi-Fi band (5G instead of 2.4G).</li> <li>• Device too far from router.</li> <li>• Incorrect Wi-Fi password.</li> <li>• Device not in pairing mode.</li> </ul>	<ul style="list-style-type: none"> <li>• Ensure your router is broadcasting a 2.4G Wi-Fi signal and your phone is connected to it.</li> <li>• Move the device closer to the router (within 15 meters).</li> <li>• Double-check the Wi-Fi password entered in the app.</li> <li>• Press and hold the button for 10 seconds until the LED flashes slowly to enter pairing mode.</li> </ul>
No app notifications received	<ul style="list-style-type: none"> <li>• Phone not connected to internet.</li> <li>• App notifications disabled.</li> <li>• Device battery low.</li> </ul>	<ul style="list-style-type: none"> <li>• Ensure your smartphone has an active internet connection.</li> <li>• Check your phone's settings to ensure notifications are enabled for the Tuya Smart/Smart Life app.</li> <li>• Charge the device fully.</li> </ul>
Shared users not receiving alerts	<ul style="list-style-type: none"> <li>• Device not properly shared.</li> <li>• Shared user's app notifications disabled.</li> </ul>	<ul style="list-style-type: none"> <li>• Verify the sharing settings in the app and ensure all intended users are added.</li> <li>• Advise shared users to check their phone's app notification settings.</li> </ul>

## 7. SPECIFICATIONS

Feature	Detail
Model Number	CF101W

Feature	Detail
Brand	PILSAMAS
Power Source	Battery Powered (1 Lithium Polymer battery included)
Battery Voltage	3.7 Volts
Battery Cell Type	Polymer (Lithium-Ion)
Charging Port	USB Type-C
Charging Time	Approx. 1 hour
Operating Time	Up to 6 months (standby)
Control Method	Touch (button press)
Wireless Connectivity	2.4G Wi-Fi (802.11 b/g/n)
Maximum Wi-Fi Range	15 meters (from router)
Mounting Type	Wall Mount (adhesive) or Wearable (lanyard)
Product Dimensions	1.97 x 0.63 x 1.97 inches (50 x 16 x 50 mm)
Item Weight	1.76 ounces
Color	White
Operating Temperature	-20°C to 50°C (-4°F to 122°F)
Waterproof Rating	IP55
Compatible Devices	Smartphone (via Tuya Smart or Smart Life app)

## 8. WARRANTY INFORMATION

The PILSAMAS WiFi Caregiver Call Button (Model CF101W) comes with a **2-year warranty** from the date of purchase. This warranty covers manufacturing defects and malfunctions under normal use.

Please retain your proof of purchase for warranty claims. The warranty does not cover damage caused by misuse, accidents, unauthorized modifications, or failure to follow the instructions in this manual.

## 9. SUPPORT

For technical support, troubleshooting assistance, or warranty inquiries, please refer to the following resources:

- **App Support:** Consult the help sections within the Tuya Smart or Smart Life applications for common issues and FAQs.
- **Online Resources:** Visit the official website of PILSAMAS or the app providers (Tuya Smart, Smart Life) for updated information and support.
- **Contact Retailer:** If purchased from a retailer, contact their customer service for assistance.



© 2025 PILSAMAS. All rights reserved.