



[Manuals.plus](#) /

> [BITIWEND](#) /

> BITIWEND Wireless Door Chime, Doorbell with 600ft Operate Range 58 Chimes 5 Volume Door Open Sensor LED Indicator for Business/Office/Home/Store When Entering, 2Sensor+2Receiver

BITIWEND Wireless Door Chime

BITIWEND Wireless Door Chime User Manual

Model: Wireless Door Chime

INTRODUCTION

Thank you for choosing the BITIWEND Wireless Door Chime. This system is designed to provide a reliable and convenient way to monitor entry points in your home, office, or store. With a wide operating range, multiple chime options, and adjustable volume, it offers flexibility and peace of mind. Please read this manual carefully before installation and use to ensure proper operation and longevity of your device.

SAFETY INFORMATION

- Do not expose the devices to extreme temperatures, direct sunlight, or moisture.
- Keep out of reach of children and pets.
- Do not attempt to disassemble or repair the devices yourself. Refer all servicing to qualified personnel.
- Ensure the receiver is plugged into a standard, properly grounded electrical outlet.
- When replacing batteries in the sensor, use the correct battery type and dispose of old batteries responsibly.

PACKAGE CONTENTS

Please check the package contents to ensure all items are present:

- 2 x Wireless Door Chime Receivers
- 2 x Door Open Sensors (Magnetic Contact Sensors)
- Mounting Hardware (Screws, Double-sided Adhesive Tape)
- User Manual (This document)



Image: The complete BITIWEND Wireless Door Chime system, showing two chime receivers and two door open sensors.

PRODUCT OVERVIEW

Familiarize yourself with the components of your BITIWEND Wireless Door Chime system.

Receiver Unit

- **Plug:** For connecting to a standard electrical outlet.
- **LED Indicator:** Illuminates when a sensor is triggered, providing a visual alert.
- **Volume Button:** Adjusts the sound level (5 levels, 0-110dB).
- **Up/Down Buttons:** Used to cycle through the 58 available chime melodies.

Door Open Sensor

- **Main Unit:** Contains the battery and transmitter.
- **Magnetic Strip:** Triggers the sensor when separated from the main unit.
- **LED Indicator:** Flashes when triggered.



Image: Detailed diagram showing the dimensions of both the wireless receiver and the magnetic door sensor, including labels for buttons and LED indicators.

SETUP AND INSTALLATION

Follow these steps to set up your wireless door chime system.

Step 1: Prepare the Sensor

1. Open the sensor unit and remove the insulating paper from the battery compartment. This activates the battery.

Step 2: Install the Sensor

Choose a suitable location for your door sensor, such as a door or window frame. Ensure the two parts of the sensor are aligned and the gap between them is less than 0.4 inches (1 cm) when the door/window is closed.

- **Adhesive Mounting:** Clean the surface thoroughly. Peel off the protective film from the double-sided adhesive tape on the back of both sensor parts and firmly press them onto the desired location.
- **Screw Mounting:** For a more permanent installation, use the provided screws to secure the sensor parts to the door/window frame.

Step 3: Plug in the Receiver

Plug the wireless receiver into any standard electrical outlet within the 600ft operating range of your sensor. The receiver will power on and be ready for pairing.

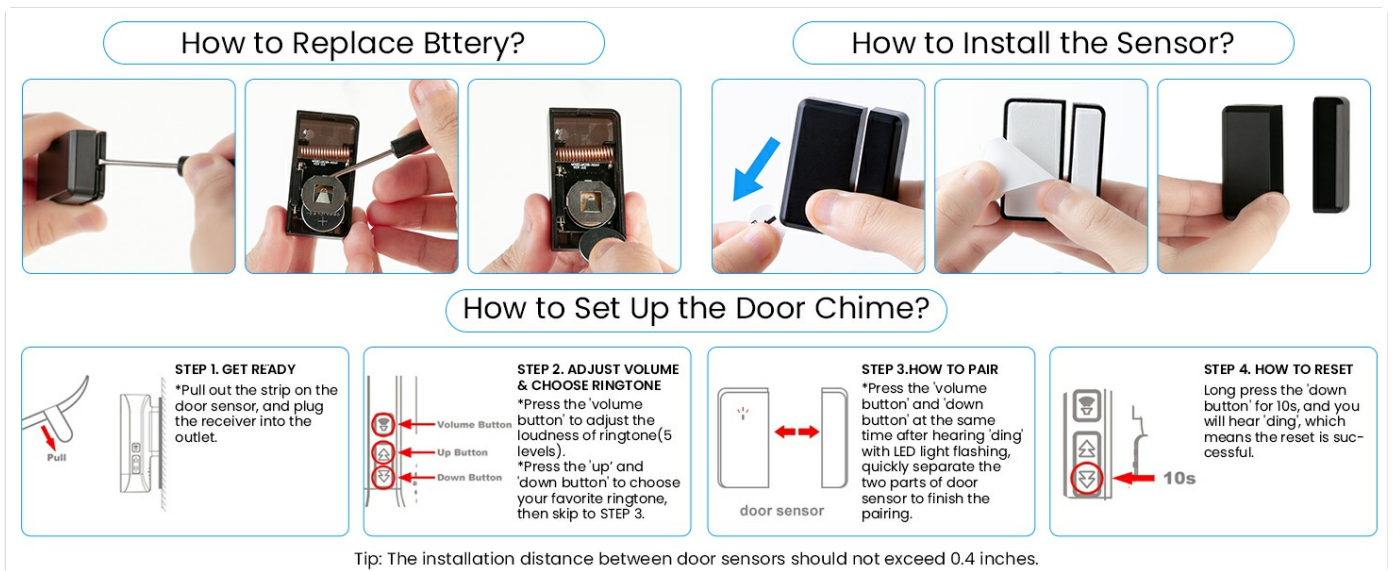


Image: Visual instructions demonstrating how to replace the sensor battery, install the sensor using adhesive or screws, and set up the door chime by pairing the sensor and receiver.

OPERATING INSTRUCTIONS

Pairing Sensor and Receiver

The sensors and receivers are pre-paired from the factory. If re-pairing is needed or you are adding new sensors/receivers:

1. Plug in the receiver.
2. Press and hold the **Volume Button** and **Down Button** simultaneously on the receiver for a few seconds until the LED indicator flashes rapidly and you hear a 'ding' sound. This indicates pairing mode.
3. Immediately separate the two parts of the door sensor (e.g., open the door). The receiver will chime, and its LED will flash, confirming successful pairing.

Adjusting Volume

Press the **Volume Button** on the receiver to cycle through 5 adjustable volume levels (0dB to 110dB). Select the desired loudness for your environment.



Image: Illustration showing the 5 volume levels (0dB to 110dB) of the BITIWEND door chime, demonstrating how to adjust the volume for different situations, from loud alerts to silent mode for sleeping.

Changing Ringtones

Press the **Up Button** or **Down Button** on the receiver to cycle through the 58 available chime melodies. Stop on your preferred chime. The selected chime will be saved automatically.

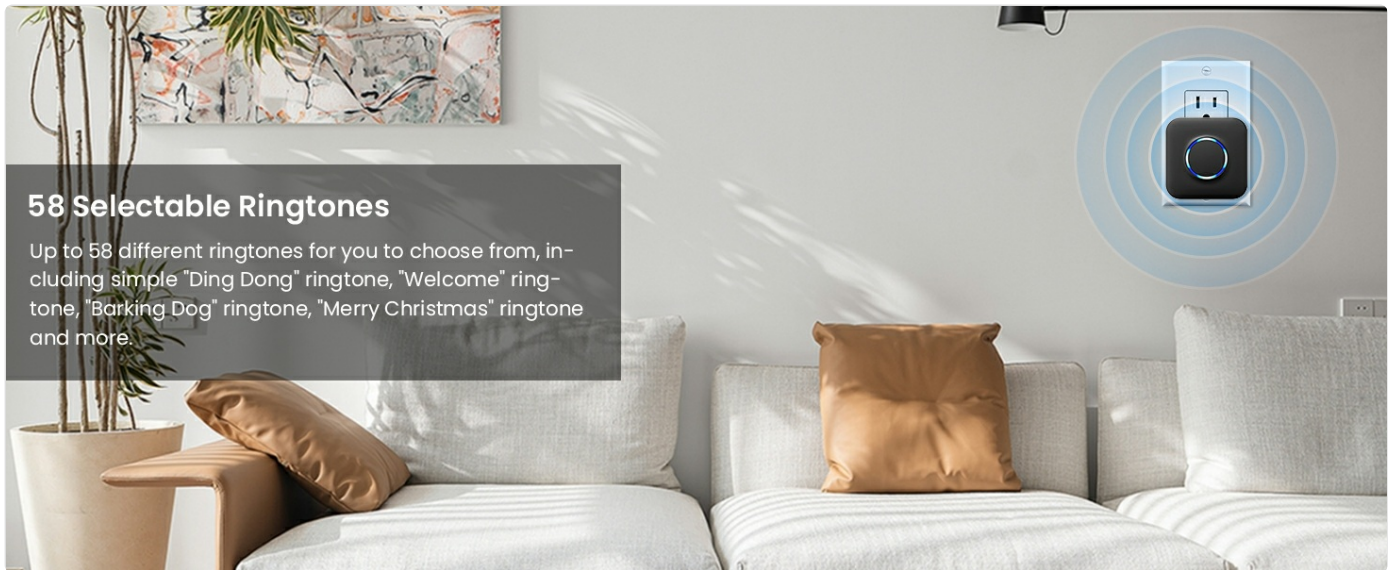


Image: A BITIWEND receiver plugged into a wall outlet in a living room setting, highlighting the feature of 58 selectable ringtones, including various melodies like 'Ding Dong', 'Welcome', 'Barking Dog', and 'Merry Christmas'.

Memory Function

The receiver is equipped with a memory function. It will automatically save your last selected volume and ringtone settings even after a power outage or if unplugged. You do not need to reset your preferences.

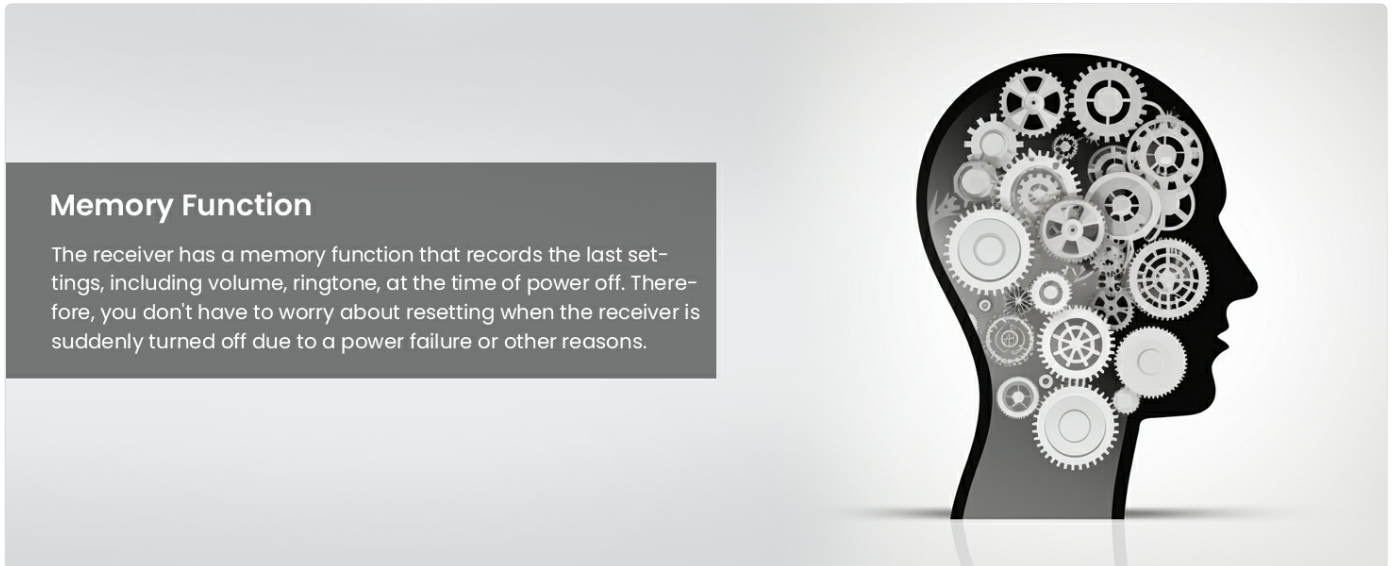


Image: A graphic representation of a human head with gears, symbolizing the memory function of the receiver, which retains settings like volume and ringtone even after power loss.

Expanding Your System

The BITIWEND system is expandable. One receiver can be paired with up to 58 chime sensors, and one door sensor can be paired with up to 58 receivers. This allows for comprehensive coverage of multiple entry points or large areas.

58 Door Chime or Door Sensor Expandable. Never miss a visitor!



Image: An architectural rendering of a multi-story house with icons indicating the placement of multiple door chime receivers and door sensors, illustrating the system's expandability to cover numerous entry points.

MAINTENANCE

To ensure optimal performance and longevity of your door chime system, follow these simple maintenance guidelines:

- **Cleaning:** Wipe the receiver and sensor units with a soft, dry cloth. Do not use abrasive cleaners or solvents.
- **Battery Replacement (Sensor):** When the sensor's LED indicator no longer flashes or the chime range decreases significantly, it's time to replace the 23A/12V battery. Carefully open the sensor unit, remove the old battery, and insert a new one, observing polarity.
- **Placement:** Periodically check that the sensor parts remain securely attached and properly aligned on the door/window frame.

TROUBLESHOOTING

Problem	Possible Cause	Solution
Receiver does not chime when sensor is triggered.	<ol style="list-style-type: none">1. Sensor battery is dead.2. Sensor and receiver are not paired.3. Receiver is unplugged or no power.4. Sensor parts are too far apart.	<ol style="list-style-type: none">1. Replace sensor battery.2. Re-pair sensor and receiver (see Operating Instructions).3. Ensure receiver is plugged in and outlet has power.4. Ensure gap between sensor parts is less than 0.4 inches (1 cm).
Short operating range.	<ol style="list-style-type: none">1. Low sensor battery.2. Obstructions (thick walls, metal objects).3. Interference from other wireless devices.	<ol style="list-style-type: none">1. Replace sensor battery.2. Relocate receiver or sensor to minimize obstructions.3. Move receiver away from other wireless devices.
Chime volume is too low/high.	Volume setting needs adjustment.	Press the Volume Button on the receiver to adjust.
Cannot change ringtone.	Incorrect button pressed.	Use the Up/Down buttons on the receiver to cycle through ringtones.

Resetting the Receiver

If you encounter persistent issues, you can reset the receiver to its factory settings:

1. Plug in the receiver.
2. Press and hold the **Down Button** on the receiver for approximately 10 seconds. The receiver will indicate a successful reset.
3. After resetting, you will need to re-pair all sensors with the receiver.

SPECIFICATIONS

Feature	Specification
Brand	BITIWEND
Model Number	Wireless Door Chime
Maximum Range	600 Feet (approx. 183 meters)
Sensor Technology	Contact Sensor
Number of Chimes	58
Volume Levels	5 (0-110dB)
Sensor Battery Type	23A/12V (included)
Receiver Power Source	AC Plug-in
Product Dimensions (Receiver)	3.62 x 3.54 x 4.88 inches
Item Weight	8.4 ounces
Color	Blue

WARRANTY AND SUPPORT

BITIWEND products are designed for reliability and performance. For warranty information or technical support, please refer to the contact details provided with your purchase or visit the official BITIWEND website. Please have your product model number and purchase date ready when contacting support.