

## Manuals+

[Q & A](#) | [Deep Search](#) | [Upload](#)

manuals.plus /

› [ROBOTIME](#) /

› [ROBOTIME 3D Puzzle Night Light User Manual](#)

## ROBOTIME MI05BROBOTIME

# ROBOTIME 3D Puzzle Night Light User Manual

Model: MI05BROBOTIME

## PRODUCT OVERVIEW

The ROBOTIME 3D Puzzle Night Light is a mechanical electric model building kit featuring a beautiful butterfly and rose design. This unique kit allows users to assemble a functional night light with intricate details and dynamic movement, making it an ideal decorative piece for any home or office.

Key features include mechanical butterfly fluttering with ultra-thin pearl wings, a 9000 rpm miniature motor, and enhanced LED breathing light in the rose and antennae. The design incorporates screen printing, metal etching, and double-layer electroplating paint for a delicate, biomimetic pattern.



Image: The fully assembled ROBOTIME 3D Puzzle Night Light, showcasing the butterfly perched on a rose stem, with a blue base.

## SAFETY INFORMATION

**WARNING: This product is not suitable for children under 14 years of age.**

- Keep small parts away from young children to prevent choking hazards.

- Handle components with care to avoid injury.
- Ensure proper battery installation to prevent malfunction or damage.

## SETUP AND ASSEMBLY

---

This 3D puzzle kit requires assembly. The estimated assembly time is approximately 1.5 hours. The kit contains 79 pieces. Please ensure you have 3 AAA batteries ready, as they are not included in the package.

### Before You Begin:

1. Unpack all components and verify against the parts list provided in the instruction manual.
2. Prepare a clean, well-lit workspace.
3. Gather necessary tools, if any, as indicated in the detailed assembly instructions (e.g., small pliers, cutters).
4. Ensure you have 3 AAA batteries for the night light function.

### Assembly Steps:

Follow the detailed, easy-to-understand instructions included in your package. The instructions will guide you through each step of assembling the mechanical components, the butterfly wings, the rose, and integrating the electrical elements.

# PURE FUN OF CRAFTMANSHIP-3D PUZZLE

(Note: Please prepare 3 AAA batteries)



Pieces 79



Assembly  
Time 1.5H

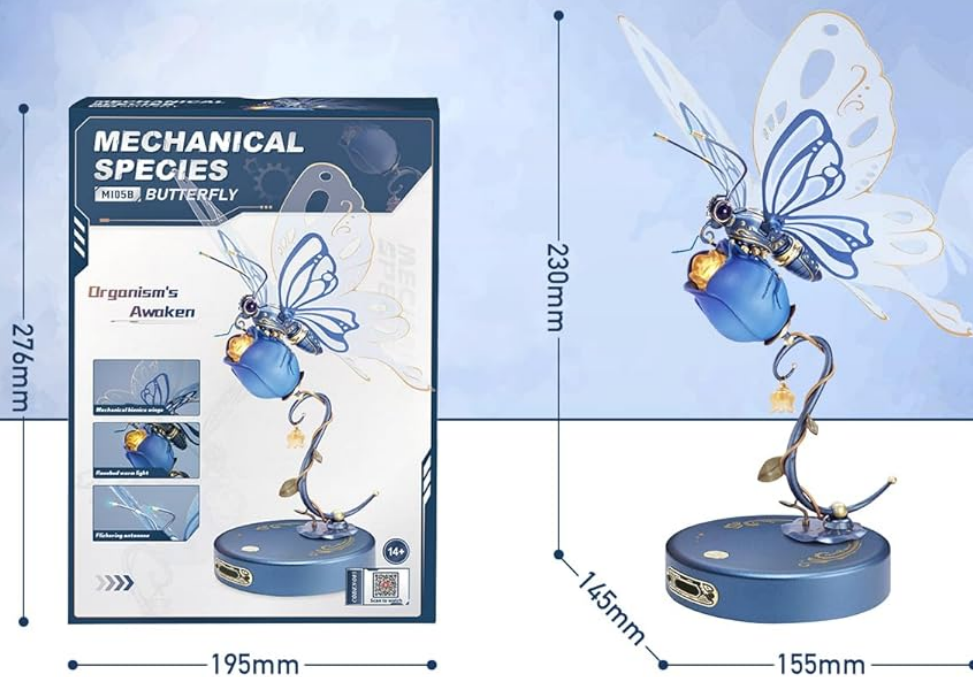


Difficulty Level



Image: An overview of the puzzle kit's contents, showing the instruction manual, unassembled parts, and the base unit, ready for assembly.

# PRODUCT INFORMATION



**Product Name:**  
Mechanical Species-Butterfly

**Product Size:**  
155\*145\*230 mm

**Material:**  
ABS,Metal,PVC

**Package Size:**  
276\*195\*57 mm

**Estimated Time  
Of Assembly:**  
1.5 Hours

**Puzzle Skill  
Level:**  
★★☆☆☆

Image: A diagram illustrating the product dimensions (15.5L x 14.5W x 23H cm assembled) and package size, along with material types (ABS, Metal, PVC) and estimated assembly time.

## OPERATING INSTRUCTIONS

Once assembled and batteries are installed, your ROBOTIME 3D Puzzle Night Light is ready for operation.

### Powering On/Off:

The device features a light touch-sensitive switch located on the base. Simply touch the designated area on the base to activate the night light and its mechanical functions.

# VINTAGE STAMPING BASE TOUCH SENSITIVE SWITCH

Mechanical butterflies flutter dynamically to create a mysterious space in your home.



Image: A close-up of the product's base, showing the touch-sensitive switch being activated by a finger.

## **Mechanical Butterfly Movement:**

Upon activation, the biomimetic butterfly wings will simulate fluttering motion through a crank and connecting rod drive system, creating a dynamic and enchanting visual effect.

# BIONIC BUTTERFLY WINGS MIMETIC FLIGHT

Crank linkage drive, like a butterfly dancing

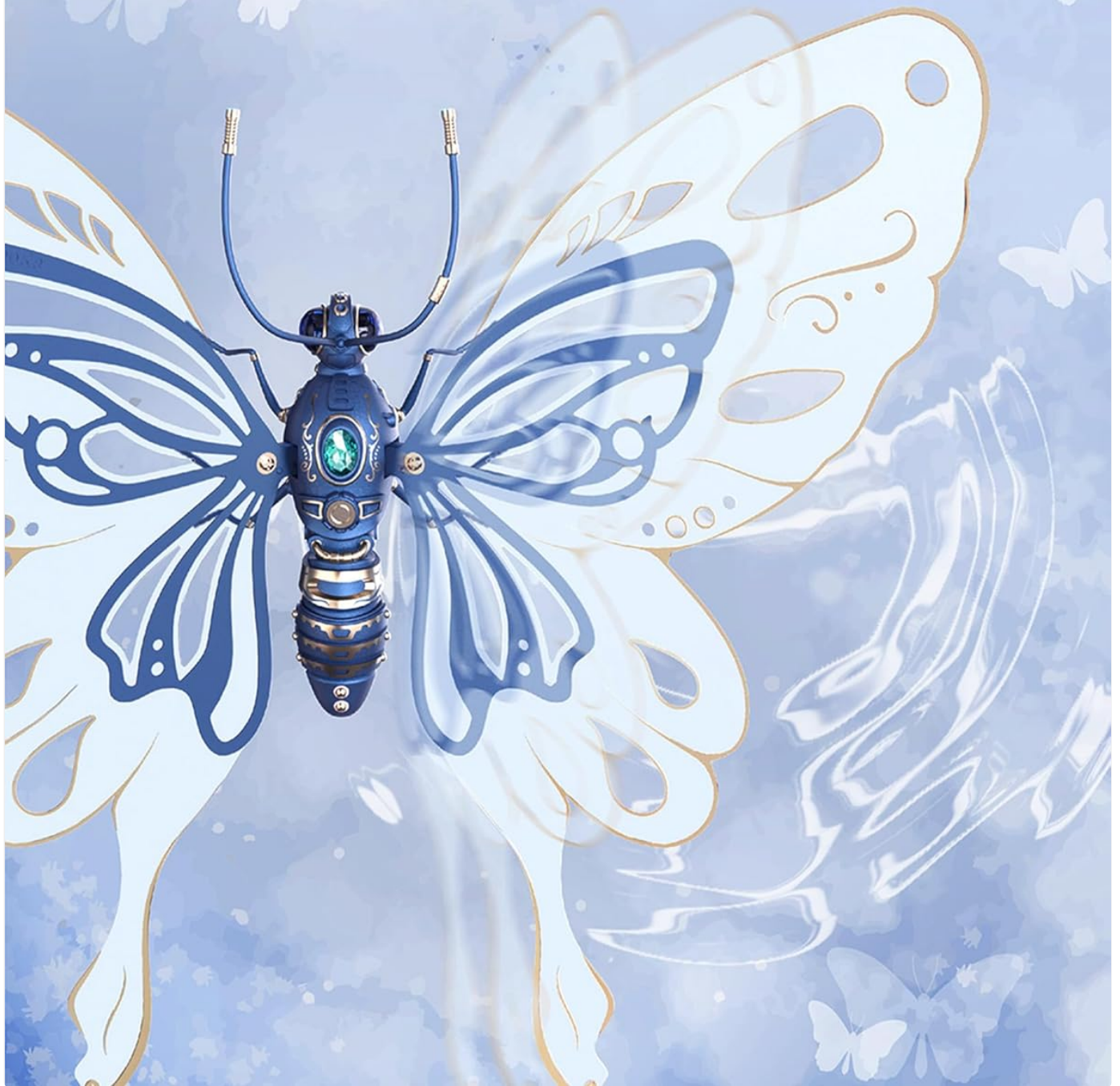


Image: A detailed view of the butterfly's mechanical structure, emphasizing the bionic design of its wings for realistic fluttering.

## LED Lighting Features:

The rose and the butterfly's antennae are equipped with enhanced LED breathing lights. These lights will twinkle, complementing the pearl luster of the butterfly's surface and creating a magical ambiance.



Image: Two detailed insets showing the illuminated antennae and the glowing golden rose, illustrating the light features.

### Automatic Shut-off:

For energy saving and safety, the night light features an automatic shut-off function after three minutes of operation.

### MAINTENANCE

- **Cleaning:** To clean the product, gently wipe with a soft, dry cloth. Avoid using abrasive cleaners or solvents, as they

may damage the finish or electronic components.

- **Battery Replacement:** When the light dims or the mechanical movement slows, it's time to replace the batteries. Open the battery compartment on the base, remove the old AAA batteries, and insert three new AAA batteries, ensuring correct polarity.
- **Storage:** Store the product in a cool, dry place away from direct sunlight and extreme temperatures when not in use for extended periods.

## TROUBLESHOOTING

- **Product Not Turning On:**
  - Ensure 3 AAA batteries are correctly installed and are not depleted.
  - Verify that the touch-sensitive switch area on the base is clean and unobstructed.
- **Butterfly Wings Not Fluttering:**
  - Check battery level.
  - Inspect the mechanical linkages for any obstructions or misalignments from assembly.
- **Lights Not Working:**
  - Confirm batteries are fresh and correctly inserted.
  - Ensure all electrical connections made during assembly are secure.
- **Damaged or Missing Parts:** If you encounter any damaged or missing parts during assembly or operation, please contact ROBOTIME customer service immediately for assistance.

## SPECIFICATIONS

Attribute	Detail
Product Dimensions (Assembled)	15.5L x 14.5W x 23H cm
Weight	550 g
Model Number	MI05BROBOTIME
Recommended Age	14 years and older
Educational Goals	Building Skills, Creative Skills
Batteries Required	Yes (3 x AAA)
Batteries Included	No
Material Type(s)	Plastic, Metal, PVC
Color	Blue
Estimated Assembly Time	1.5 Hours
Number of Pieces	79

## WARRANTY AND SUPPORT





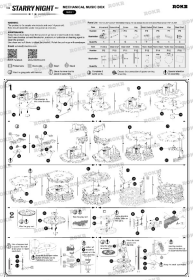
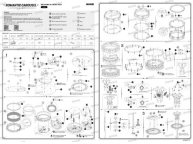
ROBOTIME is committed to providing high-quality products and excellent customer service. We offer 24-hour after-sales service to ensure your satisfaction.

For any inquiries, assistance with assembly, or to report damaged/missing parts, please contact our customer support team. Detailed contact information can typically be found on the product packaging or on the official ROBOTIME website. Please retain your proof of purchase for any warranty claims or support requests.



© 2024 ROBOTIME. All rights reserved.

Related Documents - MI05BROBOTIME

	<p><a href="#">ROKR Marble Night City LGA01 3D Wooden Puzzle Assembly Instructions</a></p> <p>Detailed assembly instructions for the ROKR Marble Night City LGA01, a 3D wooden mechanical puzzle. Learn how to build your own intricate marble run with step-by-step guidance.</p>
	<p><a href="#">ROKR Marble Night City LGA01 3D Wooden Puzzle Assembly Instructions</a></p> <p>Detailed assembly instructions for the ROKR Marble Night City LGA01 3D Wooden Puzzle. Learn how to build this intricate mechanical model step-by-step, including parts list, tools, and troubleshooting.</p>
	<p><a href="#">ROKR Marble Run MR01 The Last City Assembly Instructions</a></p> <p>Detailed assembly instructions for the ROKR Marble Run MR01 The Last City model. Learn how to build this intricate mechanical 3D puzzle with step-by-step guidance.</p>
	<p><a href="#">ROKR Magic Cello Mechanical Music Box AMK63 - Assembly and Product Information</a></p> <p>Detailed information about the ROKR Magic Cello, a mechanical music box model AMK63. Includes product features, materials, manufacturer details, and assembly guidance.</p>
	<p><a href="#">ROKR AMK51 Starry Night Orrery Mechanical Music Box Assembly Instructions</a></p> <p>Detailed assembly instructions and tips for the ROKR AMK51 Starry Night Orrery Mechanical Music Box. Learn how to build your own intricate clockwork model.</p>
	<p><a href="#">ROKR Romantic Carousel Mechanical Music Box AMK62: DIY Wooden Puzzle Assembly Guide</a></p> <p>Detailed assembly instructions for the ROKR Romantic Carousel Mechanical Music Box (Model AMK62). Discover how to build this intricate wooden DIY puzzle with clear steps and parts list.</p>