

## LKTOP Mini 4 Pro/Mini 3 Series Battery Charging Hub

# LKTOP Mini 4 Pro/Mini 3 Series Battery Charging Hub and Controller Stick Instruction Manual

## 1. INTRODUCTION

This manual provides detailed instructions for the LKTOP Mini 4 Pro/Mini 3 Series Battery Charging Hub and the included Controller Sticks. The charging hub is designed to efficiently manage and charge intelligent flight batteries for DJI Mini 4 Pro, DJI Mini 3 Pro, and DJI Mini 3 drones. It also features LED lighting, an alarm mode, and a storage mode. The controller sticks are compatible with various DJI remote controllers.

## 2. PACKAGE CONTENTS

- LKTOP Mini 4 Pro/Mini 3 Series Battery Charging Hub × 1
- RC-N1/N2 Controller Stick × 3 Pairs (Gray, Black, Gold)
- USB-C to USB-C Cable (not explicitly listed in product description but implied by charging hub, assuming for completeness)
- USB-A to USB-C Cable (not explicitly listed in product description but implied by charging hub, assuming for completeness)

## 3. PRODUCT OVERVIEW

### 3.1. Battery Charging Hub

The LKTOP Battery Charging Hub is a multi-functional device for DJI Mini 4 Pro, DJI Mini 3 Pro, and DJI Mini 3 intelligent flight batteries. It supports sequential charging for up to three batteries and can also function as a power bank to charge other USB-C devices like remote controllers, phones, or tablets. The hub integrates LED lighting and an alarm mode for enhanced utility.



Image 1: LKTOP Mini 4 Pro/Mini 3 Series Battery Charging Hub with three batteries inserted, alongside three pairs of controller sticks and two USB-C cables.

# Mini 4 Pro/Mini 3 Series Battery Charging Hub



Image 2: The charging hub connected to a 37W power adapter, simultaneously charging a drone remote controller. The image highlights Charging Mode, LED Mode, Alarm Mode, and Storage Mode.

## 3.2. Controller Sticks

The included controller sticks are designed for compatibility with DJI RC-N1 and RC-N2 remote controllers, as well as other models such as DJI Mini 3, Mini 3 Pro, Mini 2, Mini 2 SE, Air 2, Air 2S, Mavic 3, and Mavic 3 Pro. They are made from aluminum alloy for durability and feature a knurled non-slip design.

# Alarm Mode

Activate: short press & long press



Image 3: Three pairs of controller sticks in gray, black, and gold, shown next to a DJI remote controller, illustrating color options and compatibility.

## 4. SETUP

To begin using the charging hub, ensure you have a compatible USB-C power adapter (not included). Connect the charging hub to the power adapter using a USB-C cable. Insert your DJI intelligent flight batteries into the designated slots on the charging hub. The hub will automatically detect the batteries and begin the charging process.

## 5. OPERATING INSTRUCTIONS

### 5.1. Charging Mode

The charging hub supports charging up to three batteries. Depending on the input power of your adapter, the charger will automatically match the charging method. If the input power is 45W or higher, batteries may charge simultaneously. If less than 45W, batteries will charge one by one in sequence.

- **Charging Time:** Approximately 50 minutes for one Intelligent Flight Battery; approximately 90 minutes for one Intelligent Flight Battery Plus.

Your browser does not support the video tag.

Video 1: Demonstration of the LKTOP charging hub's charging mode, showing how batteries are inserted and charged, including simultaneous and sequential charging based on power input.

Your browser does not support the video tag.

Video 2: Illustrates the sequential charging process for Mini 3 Pro batteries when using a lower wattage power adapter.

## 5.2. LED Mode

The charging hub includes an integrated LED lighting function for convenience in low-light conditions.

- **Activation:** Short press and long press the function button to activate the lighting function.
- **Brightness Adjustment:** With each subsequent short press, the brightness will adjust through five levels (10%-100%).
- **Strobe Mode:** The last brightness level is a strobe mode.



Image 4: The charging hub's LED lights illuminating a dark outdoor area, demonstrating its use for visibility.

Your browser does not support the video tag.

Video 3: Highlights the LED lighting function of the LKTOP 100W Mini 4/3 Series Parallel Charging Hub, showing its use in dark environments.

### 5.3. Alarm Mode

The alarm mode provides an audible alert and visual strobe for emergency situations.

- **Activation:** Short press and long press the function button to activate the SOS sound mode.
- **Mode Cycling:** Subsequent short presses will cycle through strobe mode and SOS sound and light combination mode.
- **Deactivation:** Long press the function button to deactivate the alarm function.

# Storage Mode

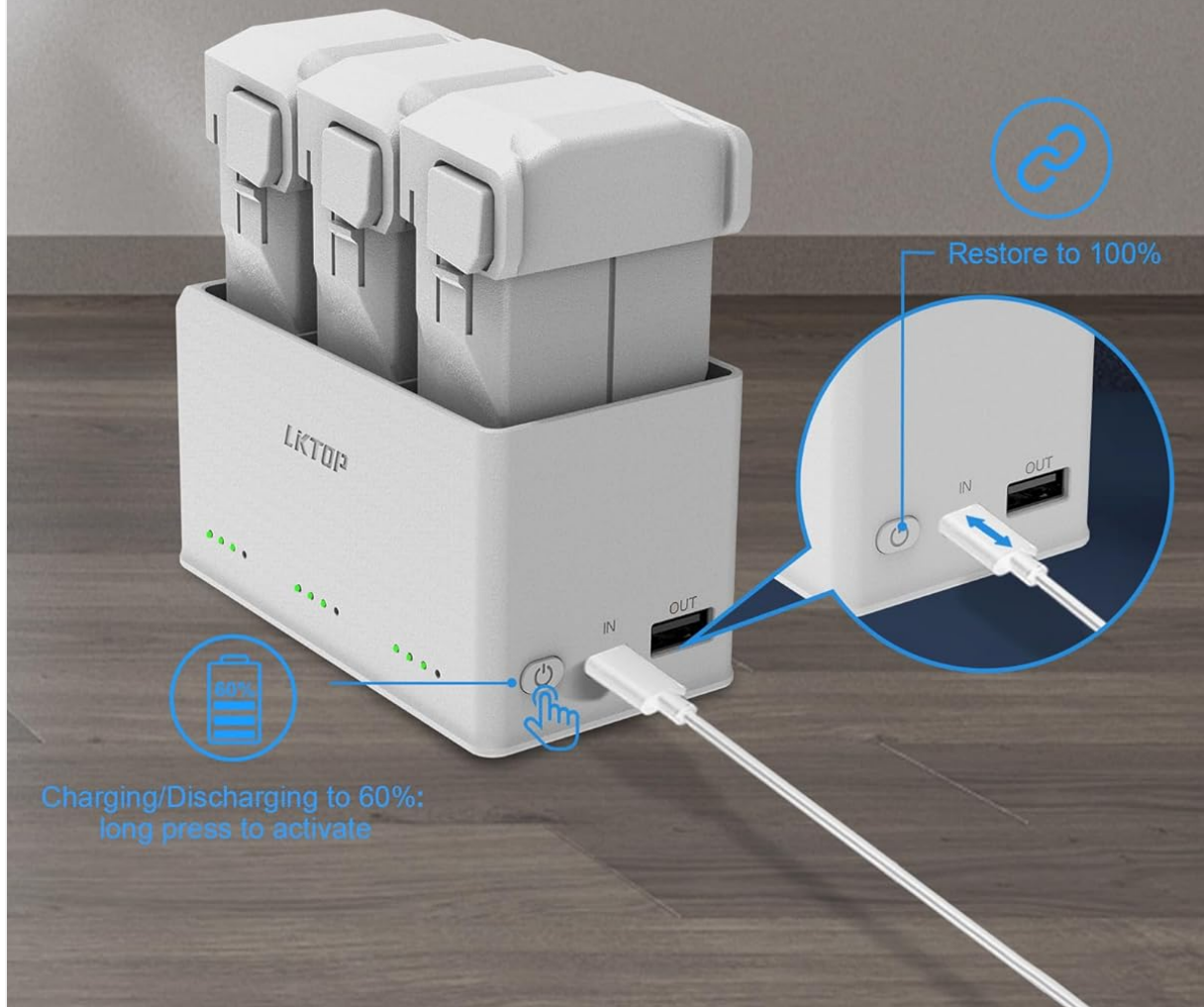


Image 5: The charging hub with its alarm mode activated, showing the sequence of alarm, strobe, and SOS sound/light combination.

## 5.4. Storage Mode

The storage mode helps maintain battery health by charging or discharging batteries to an optimal storage level (around 60%).

- **Activation:** Long press the function button to activate the charging/discharging to 60% function.
- **Full Charge Override:** Unplug and reconnect the Type-C connector to restore to 100% charging.

# Three Colors

You can replace these Joysticks at will according to your mood



Gray



Black



Gold



\*Only selling joystick, not including remote controller

Image 6: The charging hub in storage mode, indicating the process of charging/discharging batteries to 60% for optimal storage.

## 5.5. Output Mode (Power Bank Function)

The charging hub can utilize the drone batteries as a power bank to charge other devices.

- Connect your DJI remote controller, smartphone, iPad, or other USB-C compatible device to the 'OUT' port of the charging hub using an appropriate USB-C cable.
- The batteries inserted in the hub will then discharge to power your connected device.

Your browser does not support the video tag.

Video 4: Demonstrates the power bank function of the charging hub, showing it charging a DJI remote controller.

## 6. COMPATIBILITY

---

### 6.1. Charging Hub Compatibility

The LKTOP Battery Charging Hub is compatible with:

- DJI Mini 4 Pro Intelligent Flight Battery
- DJI Mini 3 Pro Intelligent Flight Battery
- DJI Mini 3 Intelligent Flight Battery

### 6.2. Controller Stick Compatibility

The included controller sticks are compatible with the following DJI remote controllers:

- DJI RC-N1
- DJI RC-N2
- DJI Mini 3
- DJI Mini 3 Pro
- DJI Mini 2
- DJI Mini 2 SE
- DJI Air 2
- DJI Air 2S
- DJI Mavic 3
- DJI Mavic 3 Pro

# Premium Material & Professional Manufacturing

aluminum alloy material , high hardness ,  
knurled non-slip



Image 7: Visual representation of the gray, black, and gold controller sticks and their compatibility with DJI RC-N1/N2 remote controllers.

## 7. SPECIFICATIONS

<b>Product Name</b>	LKTOP Mini 4 Pro/Mini 3 Series Battery Charging Hub
<b>Compatible Batteries</b>	DJI Mini 4 Pro, DJI Mini 3 Pro, DJI Mini 3 Intelligent Flight Batteries
<b>Charging Time (Intelligent Flight Battery)</b>	Approx. 50 minutes (for 1 battery)
<b>Charging Time (Intelligent Flight Battery Plus)</b>	Approx. 90 minutes (for 1 battery)

<b>Input/Output Mode</b>	Charge 3 batteries in sequence or simultaneously charge battery and USB-C devices.
<b>LED Light Modes</b>	5 brightness levels (10%-100%), Strobe mode
<b>Alarm Modes</b>	SOS sound mode, Strobe mode, SOS sound and light combination mode
<b>Storage Mode</b>	Charges/discharges batteries to 60% for optimal storage.
<b>Controller Stick Material</b>	Aluminum alloy, knurled non-slip
<b>Controller Stick Weight</b>	3.5g (per stick)

## 8. MAINTENANCE

- Keep the charging hub and controller sticks clean and dry.
- Avoid exposing the devices to extreme temperatures, moisture, or direct sunlight.
- Regularly inspect cables for any signs of wear or damage.
- Store the charging hub and batteries in a cool, dry place when not in use. Utilize the storage mode for long-term battery preservation.

## 9. TROUBLESHOOTING

- **Device not charging:** Ensure the power adapter is properly connected and functioning. Verify that the USB-C cable is securely plugged into both the adapter and the charging hub. Check if batteries are correctly inserted.
- **LED lights not activating:** Ensure a battery is inserted into the hub. Press and hold the function button as described in the LED Mode section.
- **Slow charging:** Ensure your power adapter provides sufficient wattage (e.g., 45W or higher for simultaneous charging). Lower wattage adapters will charge batteries sequentially.
- **Controller sticks not fitting:** Confirm that your remote controller model is listed under the compatible devices in Section 6.2.

## 10. SAFETY INFORMATION

- Do not disassemble or modify the charging hub or controller sticks.
- Keep out of reach of children.
- Use only compatible batteries and power adapters.
- Avoid dropping or subjecting the devices to strong impacts.
- If any unusual behavior or damage is observed, discontinue use immediately and contact customer support.

## 11. WARRANTY AND SUPPORT

For warranty information, technical support, or any inquiries regarding your LKTOP product, please refer to the official LKTOP website or contact their customer service directly. Details can typically be found on the product packaging or the manufacturer's official online channels.

