

Manuals+

[Q & A](#) | [Deep Search](#) | [Upload](#)

manuals.plus /

- › [Yeedi](#) /
- › [Yeedi M12 PRO+ Robot Vacuum and Mop User Manual](#)

Yeedi M12 PRO+

Yeedi M12 PRO+ Robot Vacuum and Mop

User Instruction Manual

INTRODUCTION

The Yeedi M12 PRO+ is an advanced robotic vacuum and mop designed to provide a comprehensive and hands-free cleaning experience for your home. Featuring powerful 11000Pa suction, innovative ZeroTangle Technology, and precise TruEdge Deep Mopping, this device ensures thorough cleaning on various floor types. The included Mini Omni Station automates mop washing, drying, and dustbin emptying, minimizing manual intervention.



Figure 1: Yeedi M12 PRO+ Robot Vacuum and Mop with Mini Omni Station and included accessories.

SETUP GUIDE

Follow these steps to set up your Yeedi M12 PRO+ for the first time:

1. **Unboxing and Placement:** Carefully remove all components from the packaging. Select a suitable location for the Mini Omni Station. Ensure it is placed against a wall, with at least 0.5 meters (1.6 feet) of clear space on both sides and 1.5 meters (4.9 feet) in front for optimal robot navigation. The station should be on a hard, flat surface and connected to a power outlet.
2. **Initial Charging:** Place the robot onto the charging pins of the Omni Station. Ensure the robot is correctly docked. The indicator light on the robot will show charging status. Allow the robot to fully charge before its first use (approximately 2 hours for a full charge from empty).
3. **App Download and Connection:** Download the official Yeedi app from your smartphone's app store. Open the app and follow the on-screen instructions to create an account and add your M12 PRO+ robot. Ensure your Wi-Fi network is 2.4GHz, as 5GHz Wi-Fi is not supported.
4. **Initial Mapping:** Once connected, initiate the mapping process through the app. Clear the floor of any obstacles for the first mapping run to ensure an accurate map of your home. The TrueMapping 2.0 technology allows for quick and precise mapping, supporting multi-level maps.

M12 PRO PLUS

Mops Every Edge.
Zero Hair Hassle. Simply Brilliant Clean



11000Pa Suction



ZeroTangle



Mini OMNI Station



TruEdge



Figure 2: The Yeedi M12 PRO+ and its Mini Omni Station ready for operation.

OPERATING INSTRUCTIONS

The Yeedi M12 PRO+ is designed for intelligent and efficient cleaning. Here's how to operate it:

- **Cleaning Modes:** The robot supports various cleaning modes, including vacuum-only, mop-only, and vacuum-and-mop. You can select your preferred mode and adjust suction power and water flow settings via the Yeedi app.


- **Powerful Suction:** With 11000Pa suction power, the M12 PRO+ effectively picks up dust, debris, and pet hair from various surfaces, including carpets.
- **TruEdge Deep Mopping:** The TruEdge Adaptive Edge Mopping system ensures precise cleaning along edges and in corners, reaching within 0.039 inches of walls and furniture. The OZMO TURBO 2.0 technology provides powerful scrubbing for stubborn stains.
- **Auto-Lift Mopping:** The robot intelligently detects carpets using ultrasonic sound and automatically lifts its mopping plates by 0.35 inches to prevent wetting carpets and maximize suction for vacuuming. This prevents cross-contamination between hard floors and carpets.
- **ZeroTangle Technology:** This innovative technology, featuring dual comb teeth arrays and a specially designed roller brush, prevents hair entanglement, ensuring consistent cleaning performance and reducing maintenance.
- **Navigation and Obstacle Avoidance:** Equipped with TrueDetect 3D 3.0, the robot precisely avoids obstacles, ensuring safe and efficient navigation around your home. It can also effortlessly cross obstacles like door thresholds up to 0.78 inches.
- **App Control:** Use the Yeedi app to schedule cleanings, define no-go zones, set virtual walls, select specific rooms for cleaning, and monitor the robot's progress.
- **Foot Touch Control:** For quick cleaning, you can start the robot by gently touching the foot pedal on the Omni Station.

Powerful Suction

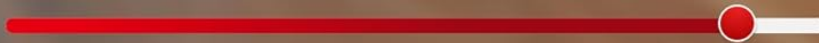
No tangled hair, perfect for pet families

11000 Pa



M12 PRO+ 

11000pa



Other
6000pa



Figure 3: The M12 PRO+ features 11000Pa powerful suction for effective cleaning.

Effortlessly Clean Every Corner

Covers edges, corners, narrow spaces, and even around tables or chairs



*Data source: YEEDI's internal laboratory test results. Edge coverage rate 98.6% Cleaning efficiency test report

Figure 4: The robot's TruEdge technology ensures thorough cleaning in corners and along edges.

ZeroTangle Technology

No tangled hair, perfect for pet families

Zero Tangle, Zero Hassle



99.4%* Cleaning Efficiency



Minimum Edge Distance

*Data source: YEEDI's internal laboratory test results. The test data is the CE value test report: up to 99.4% (large carpet particles), at fan speed of 24000rpm (super high gear), 42206rpm (MAX).

Figure 5: ZeroTangle Technology prevents hair from wrapping around the brush, ideal for pet owners.

MAINTENANCE

Regular maintenance ensures optimal performance and longevity of your Yeedi M12 PRO+:

- **Mini Omni Station Maintenance:** The station features Auto-Empty, One-Tap Self Cleaning, and Auto Refill with Drain. The 3.4L dust bag can hold debris for up to 90 days. The station also performs 158°F hot water mop washing and 113°F hot air drying for the mop pads, ensuring hygiene and preventing odors. Regularly empty the dirty water

tank and refill the clean water tank. The detachable base facilitates easy cleaning.

- **Robot Dustbin and Filter:** The robot automatically empties its dustbin into the Omni Station. Periodically check and clean the robot's internal dustbin and filter as recommended by the app.
- **Mop Pads:** The mop pads are automatically washed and dried by the Omni Station. Replace mop pads when their cleaning effectiveness diminishes.
- **Roller Brush:** Thanks to ZeroTangle Technology, hair entanglement is significantly reduced. However, occasionally check the roller brush for any trapped debris and clean as needed.
- **Sensors:** Keep the robot's sensors clean to ensure accurate navigation and obstacle detection. Use a soft, dry cloth to wipe them regularly.

Mini

All-in-One Station

Compact Yet Versatile



**Hot Water
Mop Washing**



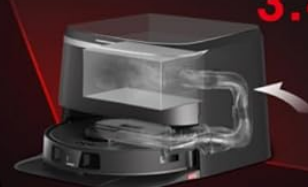
158°F

**Hot Air
Drying**



113°F

**Dust Bag
Capacity**



3.4L

Figure 6: The Mini Omni Station provides automated maintenance for the robot.

158°F* Hot Water Mop Washing

Ensures a deeper self-cleaning by effectively dissolving grime and grease



113°F* Hot Air Drying

Fast & Hygienic: 2-hour all-around drying for the mop and station bottom plate



*Data source: YEEDI's internal laboratory test results.

Figure 7: The Omni Station's 158°F hot water mop washing ensures deep cleaning of mop pads.

TROUBLESHOOTING

If you encounter issues with your Yeedi M12 PRO+, refer to the following common solutions:

- **Robot Not Charging:** Ensure the Omni Station is powered on and the robot is correctly docked. Clean the charging contacts on both the robot and the station.

- **Robot Not Connecting to Wi-Fi:** Verify your Wi-Fi network is 2.4GHz. Restart your router and the robot. Follow the app's instructions for re-pairing.
- **Poor Cleaning Performance:** Check if the dustbin is full or the filter is clogged. Clean the roller brush and side brushes. Ensure mop pads are clean and properly attached.
- **Robot Getting Stuck:** Clear any small objects, cables, or thick rugs that might obstruct the robot's path. The TrueDetect 3D 3.0 system helps avoid most obstacles, but some very low or reflective items might still pose a challenge.
- **Mapping Issues:** If the map is inaccurate or incomplete, ensure all doors are open during mapping. You can reset and remap your home through the app if necessary.
- **Error Messages:** The robot will provide verbal error messages and notifications via the app. Refer to the app for specific troubleshooting steps related to the error code.

For more detailed troubleshooting or persistent issues, consult the Yeedi app's help section or the full user manual available online.

SPECIFICATIONS


Feature	Specification
Brand	Yeedi
Model Name	M12 PRO+
Special Feature	Auto Mop Washing
Color	Black
Product Dimensions	19"L x 16"W x 18.9"H
Included Components	OMNI station, Power cord, Quick guide, Robot, User Manual
Filter Type	Sponge
Battery Life	290 minutes
Voltage	110 Volts
Capacity	3.4 Liters (Dust Bag)
Power Source	Battery Powered
Are Batteries Included	Yes
Control Method	App
Compatible Devices	Amazon Echo
Form Factor	Robotic
Manufacture Year	2024
Item Weight	32 pounds
Manufacturer	Reecoo


WARRANTY AND SUPPORT

The Yeedi M12 PRO+ comes with a **12-month worry-free warranty**, ensuring peace of mind regarding your purchase. For any product-related inquiries, technical support, or warranty claims, please refer to the official Yeedi website or contact their customer service through the Yeedi app. They offer a rapid responding service team and a 30-day free returns and exchanges policy.

© 2024 Yeedi. All rights reserved.

Related Documents - M12 PRO+

	<p>eufy X10 Pro Omni Robot Vacuum and Mop User Guide</p> <p>Comprehensive user guide for the eufy X10 Pro Omni Robot Vacuum and Mop, covering setup, operation, maintenance, and troubleshooting.</p>
	<p>Manual de utilizare eufy X10 Pro Omni Robot Aspirator și Mop</p> <p>Manual de utilizare complet pentru aspiratorul robot eufy X10 Pro Omni, acoperind configurarea, operarea, întreținerea, controlul prin aplicație și depanarea. Aflați cum să utilizați stația Omni, modurile de curățare, setările de putere de aspirație și funcțiile de siguranță pentru copii.</p>
	<p>Dreame L50 Pro Ultra Robot Vacuum and Mop User Manual</p> <p>Comprehensive user manual for the Dreame L50 Pro Ultra robot vacuum and mop, detailing features like auto water refilling, auto-empty, and self-cleaning. Includes setup, usage, maintenance, and troubleshooting guides.</p>
	<p>LYNKBey M20 Pro Robot Vacuum and Mop Quick Start Guide</p> <p>Concise guide to setting up and using the LYNKBey M20 Pro Robot Vacuum and Mop, including product introductions, installation steps, and mobile app connection instructions.</p>
	<p>Yeedi Cube Robot Vacuum and Mop: Instruction Manual and User Guide</p> <p>Comprehensive instruction manual for the Yeedi Cube Robot Vacuum and Mop (Model YDAX11), covering setup, operation, maintenance, and troubleshooting. Learn how to use your Yeedi robot vacuum effectively and safely.</p>

	<p>yeedi cube Robot Vacuum and Mop: Instruction Manual & User Guide</p> <p>Comprehensive instruction manual for the yeedi cube Robot Vacuum and Mop (Model YDAX11). Covers setup, operation, safety, maintenance, troubleshooting, and product specifications for optimal performance.</p>
--	--

Documents - Yeedi – M12 PRO



[YEEDI M12 PRO+ Instruction Manual: Setup, Operation, and Safety Guide](#)

Comprehensive instruction manual for the YEEDI M12 PRO+ robot vacuum and mop. Learn about setup, safety precautions, product features, operation, and technical specifications. Includes guidance for app connection and maintenance.

lang:en **score:27** filesize: 6.03 M page_count: 48 document date: 2024-04-25