

JBL JBLSTRMWLUSBCBLKAM

JBL Quantum Stream Wireless USB-C Microphone Instruction Manual

Model: JBLSTRMWLUSBCBLKAM

INTRODUCTION

The JBL Quantum Stream Wireless USB-C microphone is a versatile, wearable streaming microphone designed for crystal clear recordings. It features an omnidirectional pickup pattern, adjustable environmental noise cancelling, and a convenient clip-on design. This manual provides essential information for setting up, operating, and maintaining your device to ensure the best performance and experience.

PACKAGE CONTENTS

Your JBL Quantum Stream Wireless USB-C microphone package includes the following items:

- 1 x JBL Quantum Stream Wireless for USB-C Connection Microphone
- 1 x 2.4GHz Receiver
- 1 x Charging case
- 1 x Windscreen
- 1 x USB charging cable
- 1 x Warranty/Warning
- 1 x Quick Start Guide (QSG)



Image: All components included in the JBL Quantum Stream Wireless USB-C microphone package.

SETUP

Connecting the Receiver

The JBL Quantum Stream Wireless USB-C microphone utilizes a 2.4GHz low-latency wireless USB-C dongle for connection to compatible devices.

1. Insert the 2.4GHz USB-C receiver directly into the USB-C port of your compatible Android device or iPhone 15 (or newer Apple devices with USB-C).
2. The microphone will automatically connect to the receiver. Ensure your device recognizes the external microphone.

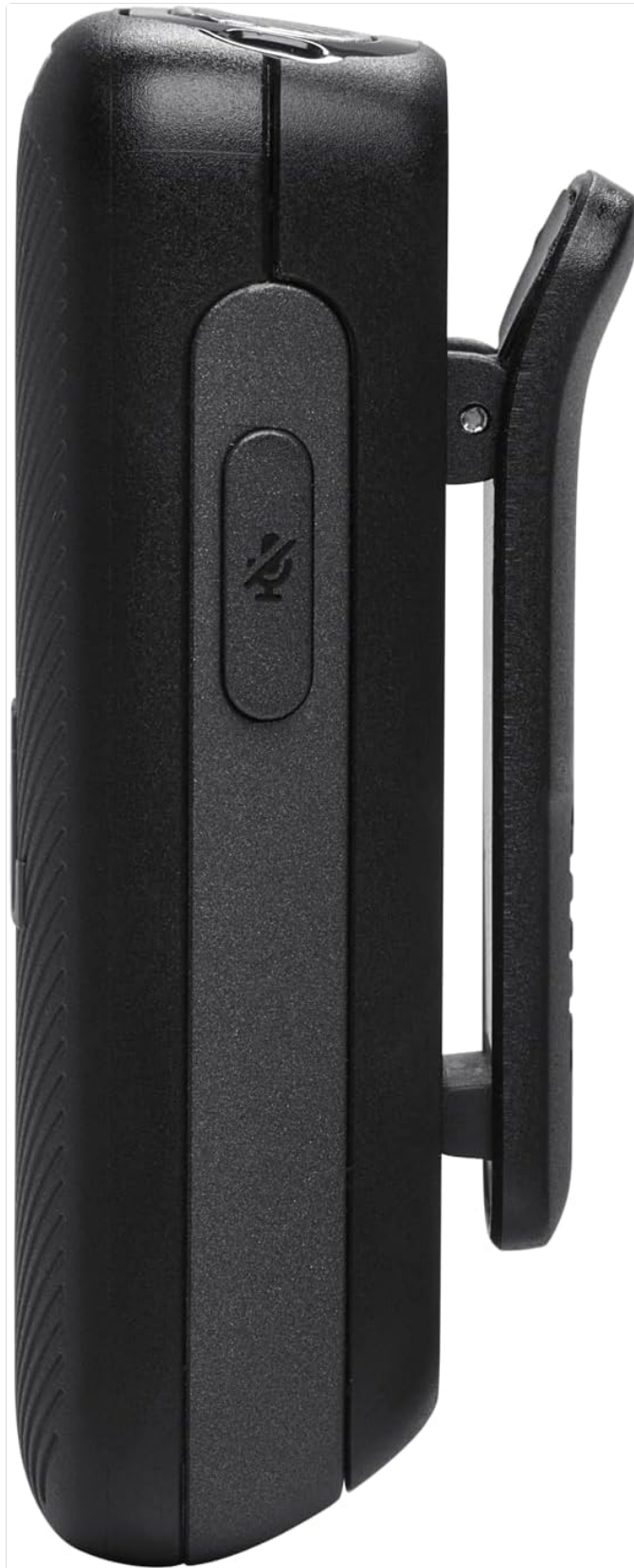


Image: The USB-C receiver connected to a smartphone, ready for use.

Attaching the Windscreen

For optimal audio quality in outdoor environments or windy conditions, attach the included furry windscreen to the microphone.

1. Gently slide the furry windscreen over the microphone's pickup area.
2. Ensure it is securely fitted to prevent it from falling off during use.

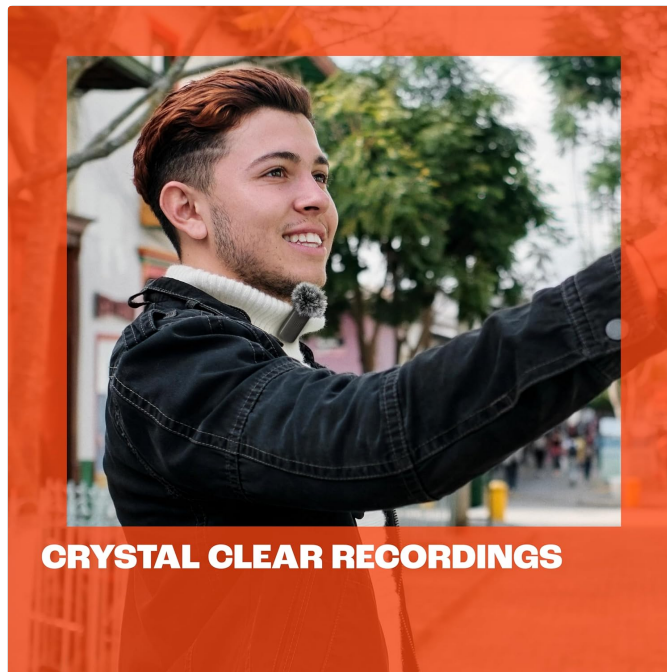


Image: The furry windscreen attached to the microphone for noise reduction.

Video: Official JBL guide on how to set up the Quantum Stream Wireless microphone.

OPERATION

Adjustable Microphone Gain

The microphone's input sensitivity can be adjusted to match your recording environment and desired audio levels.

- Use the JBL Headphones app on your Android device to boost or lower the microphone gain.
- This feature ensures your recordings sound clear whether you are in a quiet room or a noisy outdoor setting.

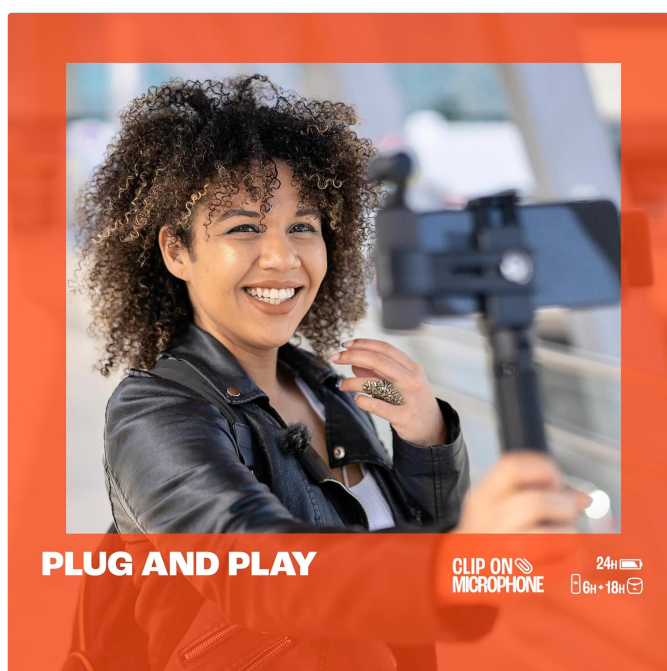


Image: Screenshot of the JBL Headphones app interface showing adjustable mic gain settings.

Environmental Noise Cancelling

The omnidirectional pickup pattern of the microphone, combined with adjustable environmental noise cancelling, allows for clear recordings with or without ambient sounds. This feature can be configured through the JBL Headphones app.

Mute Function and Indicators

The microphone is equipped with a mute button and an LED indicator. This allows for quick muting and unmuting, with visual confirmation to prevent unintended audio capture. Status lights on both the microphone and the charging case provide real-time information on connection status, recording activity, and battery levels.

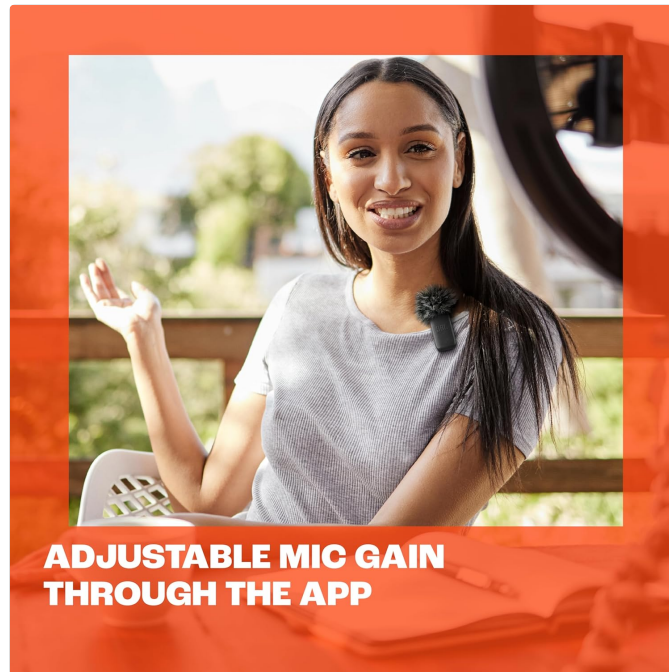


Image: The JBL Quantum Stream Wireless USB-C microphone clipped onto a user's shirt.

Battery Life and Charging

The microphone offers extended recording capabilities:

- Up to 6 hours of continuous recording on a single charge.
- An additional 18 hours of battery life are provided by the charging case, for a total of 24 hours.
- For quick power-ups, a 15-minute speed charge provides 1 additional hour of recording time.

MAINTENANCE

To ensure the longevity and optimal performance of your JBL Quantum Stream Wireless USB-C microphone, follow these maintenance guidelines:

- **Cleaning:** Keep the microphone and charging case clean and dry. Use a soft, dry cloth to wipe down surfaces. Avoid using abrasive cleaners or harsh chemicals.
- **Charging Port:** Periodically check the USB-C charging port on both the receiver and the charging case for any dust or debris. Ensure it is clear before connecting the charging cable.
- **Storage:** When not in use, store the microphone and receiver securely in the charging case. This protects the devices from physical damage and keeps them charged for your next use.
- **Windscreen Care:** If using the furry windscreen, gently clean it as needed to remove dust or debris.

Avoid excessive pulling or stretching.

SPECIFICATIONS

Key technical specifications for the JBL Quantum Stream Wireless USB-C microphone:

Feature	Detail
Item dimensions L x W x H	2.53 x 2.17 x 1.42 inches
Power Source	Battery Powered
Number of Batteries	1 Lithium Ion batteries required. (included)
Material	Plastic
Signal-to-Noise Ratio	64.8 dB
Number of Channels	1
UPC	050036398831
Item Weight	5.9 ounces
Connectivity Technology	Wireless
Connector Type	USB Type-C
Polar Pattern	Omnidirectional
Microphone Form Factor	Lavalier

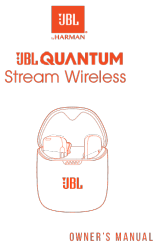
SUPPORT AND WARRANTY






For further assistance, troubleshooting tips, or to access detailed warranty information for your JBL Quantum Stream Wireless USB-C microphone, please visit the official JBL support page.

[Visit JBL Support](#)

Video: An official product video showcasing the JBL Quantum Stream Wireless USB-C microphone's features and benefits.

Related Documents - JBLSTRMWLUSBCBLKAM

	<p>JBL Quantum Stream Wireless Owner's Manual: Setup, Features, and Troubleshooting</p> <p>Comprehensive owner's manual for the JBL Quantum Stream Wireless microphone. Learn about setup, product overview, controls, LED behaviors, specifications, and troubleshooting for this high-quality wireless microphone system.</p>
---	---

 <p>JBL QUANTUM Stream</p> <p>OWNER'S MANUAL</p>	<p>JBL Quantum Stream Owner's Manual: Setup, Features, and Troubleshooting</p> <p>Comprehensive owner's manual for the JBL Quantum Stream USB microphone. Learn about setup, controls, polar patterns, mounting options, specifications, and troubleshooting for optimal audio performance.</p>
 <p>JBL QUANTUM STREAM WIRELESS</p> <p>QUICK START GUIDE</p>	<p>JBL Quantum Stream Wireless Quick Start Guide</p> <p>Get started quickly with the JBL Quantum Stream Wireless microphone system for Lightning connection. This guide covers setup, usage, app features, and technical specifications for optimal audio recording.</p>
 <p>JBL QUANTUM 100</p> <p>QUICK START GUIDE</p>	<p>JBL Quantum 100 Gaming Headset Quick Start Guide</p> <p>This guide provides setup and usage instructions for the JBL Quantum 100 gaming headset, including what's in the box, an overview of features, setup for various devices, microphone usage, and technical specifications.</p>
 <p>JBL QUANTUM 100</p> <p>QUICK START GUIDE</p>	<p>JBL Quantum 100 Gaming Headset - Quick Start Guide</p> <p>Quick start guide for the JBL Quantum 100 gaming headset, detailing its contents, features, setup, compatibility, technical specifications, and manufacturer information.</p>
 <p>JBL QUANTUM 610 WIRELESS</p> <p>QUICK START GUIDE</p>	<p>JBL Quantum 610 Wireless Quick Start Guide</p> <p>This guide provides instructions for setting up and using the JBL Quantum 610 Wireless gaming headset, including software requirements, system compatibility, and technical specifications.</p>