

Manuals+

[Q & A](#) | [Deep Search](#) | [Upload](#)

manuals.plus /

- › [K&F Concept](#) /
- › [K&F Concept RGB Video Light User Manual](#)

K&F Concept KF34.036V2

K&F Concept RGB Video Light User Manual

Model: KF34.036V2

Brand: K&F Concept

1. INTRODUCTION

Thank you for choosing the K&F Concept RGB Video Light. This portable and versatile lighting solution is designed to enhance your photography and videography with its full-color capabilities and various lighting effects. This manual provides detailed instructions for the proper use, setup, operation, and maintenance of your device. Please read this manual thoroughly before use to ensure optimal performance and longevity of the product.



Figure 1.1: K&F Concept RGB Video Light

2. PRODUCT FEATURES

- **Professional RGB Lighting:** Equipped with 60 high-quality LED beads (20 white, 20 warm, 20 RGB) and a Color Rendering Index (CRI) of 96+ for realistic color reproduction.
- **Dual Lighting Modes:** Features CCT mode for adjustable color temperature (2500K-9900K) and brightness (1%-100%), and HSI mode for hue adjustment (0°-360°) and saturation control.
- **21 Built-in Light Effects:** Offers a variety of creative lighting scenarios to enhance your photos and videos.
- **High Capacity Battery:** Integrated 2000mAh rechargeable lithium battery provides up to 2 hours of maximum brightness or 7.5 hours at minimum brightness. Supports Type-C charging and can be used while charging.
- **Intuitive Design:** Features a built-in LCD display for clear parameter viewing and infinitely variable metal knobs for precise adjustments.
- **Multiple Mounting Options:** Includes two 1/4" screw holes, a cold shoe adapter for camera mounting, a magnetic back for attaching to metal surfaces, and lanyard holes for portability.

3. PACKAGE CONTENTS

Please check the package contents upon opening to ensure all items are present:

- K&F Concept RGB Video Light Unit
- USB-C Charging Cable
- Cold Shoe Adapter
- Wrist Strap

4. SETUP

4.1 Initial Charging

Before first use, fully charge the RGB Video Light. Connect the supplied USB-C cable to the Type-C charging port on the light and plug the other end into a compatible USB power source (e.g., wall adapter, computer USB port). The LCD display will indicate charging status.

2000mAh Built-in Battery



2 hrs
working time for
100% brightness



7.5 hrs
working time for
the least brightness



110 min
Charging Time



Figure 4.1: Charging the device

4.2 Attaching Accessories

- **Cold Shoe Adapter:** To mount the light on a camera or other cold shoe mount, screw the cold shoe

adapter into one of the 1/4" screw holes on the light (top or bottom).

- **Wrist Strap:** Thread the wrist strap through the lanyard hole for secure carrying.

5. OPERATING INSTRUCTIONS

External Knobs for Stepless Control

Stepless knobs to adjust color temperature and brightness

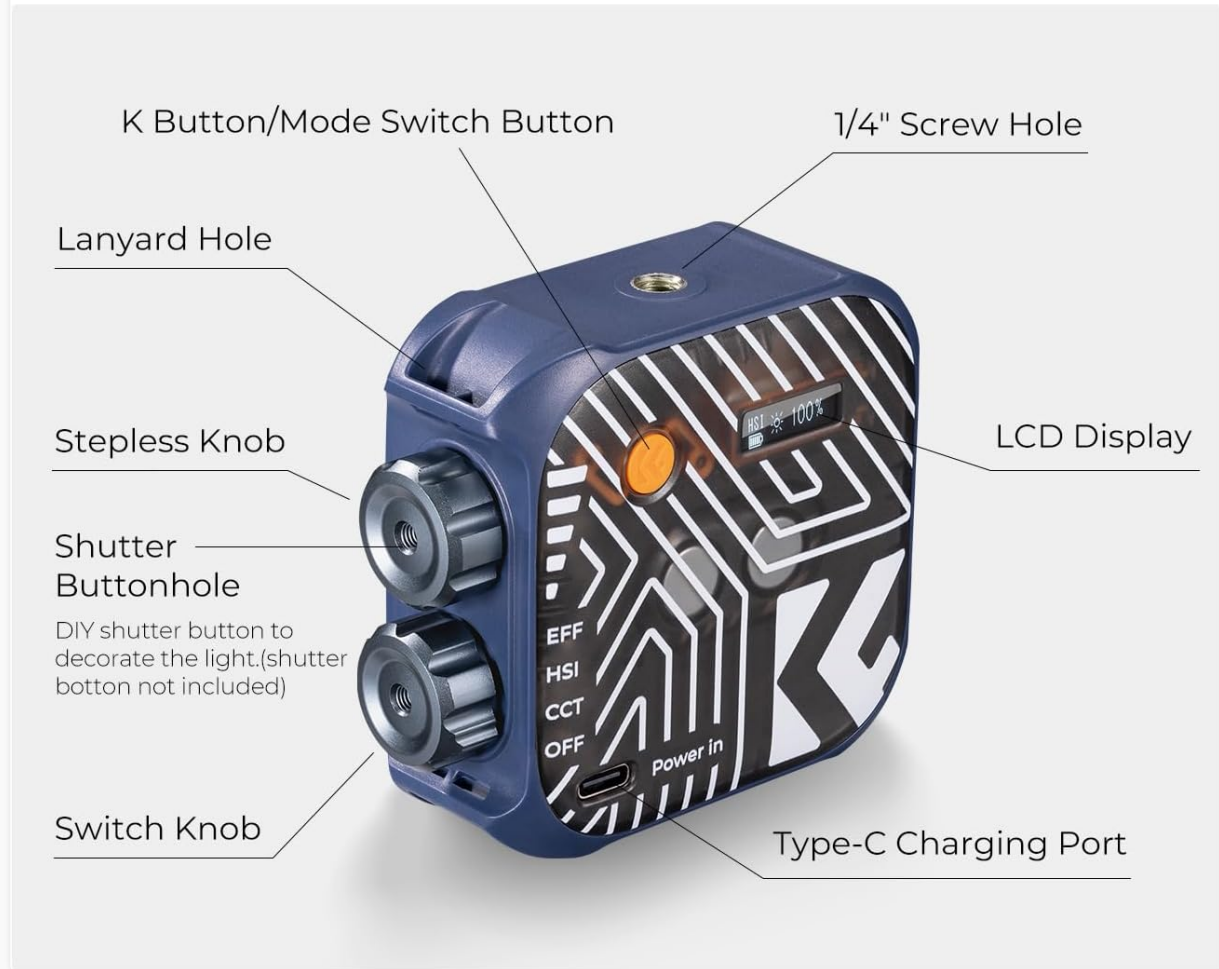


Figure 5.1: Control Layout

5.1 Power On/Off

Rotate the bottom knob (Switch Knob) clockwise to turn the light ON. Rotate it counter-clockwise until it clicks to turn the light OFF.

5.2 Mode Selection

Press the K Button/Mode Switch Button (orange button) to cycle through the lighting modes: CCT (Color Temperature), HSI (Hue, Saturation, Intensity), and EFF (Effects).

5.3 CCT Mode (Color Temperature)


In CCT mode, you can adjust the color temperature and brightness.

- **Adjusting Color Temperature:** Rotate the top knob (Stepless Knob) to change the color temperature


from 2500K (warm) to 9900K (cool).

- **Adjusting Brightness:** Press the K Button/Mode Switch Button once to switch to brightness adjustment. Rotate the top knob to adjust brightness from 1% to 100%.

Stepless Adjust Color Temperature and Brightness



6W



60 LED beads



CRI 96+



2500K-9900K



1-100%




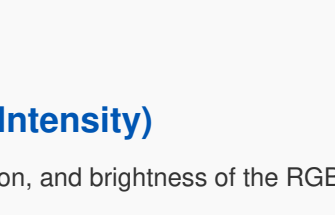
	
	
	
	
	
	

Figure 5.2: CCT Mode Adjustments

5.4 HSI Mode (Hue, Saturation, Intensity)

In HSI mode, you can control the hue, saturation, and brightness of the RGB light.

- **Adjusting Hue:** Rotate the top knob to change the hue from 0° to 360°.
- **Adjusting Saturation:** Press the K Button/Mode Switch Button once to switch to saturation adjustment. Rotate the top knob to adjust saturation.
- **Adjusting Intensity (Brightness):** Press the K Button/Mode Switch Button again to switch to intensity adjustment. Rotate the top knob to adjust brightness from 1% to 100%.

Make Every Shot Stunning

360° full color, adjustable saturation and brightness

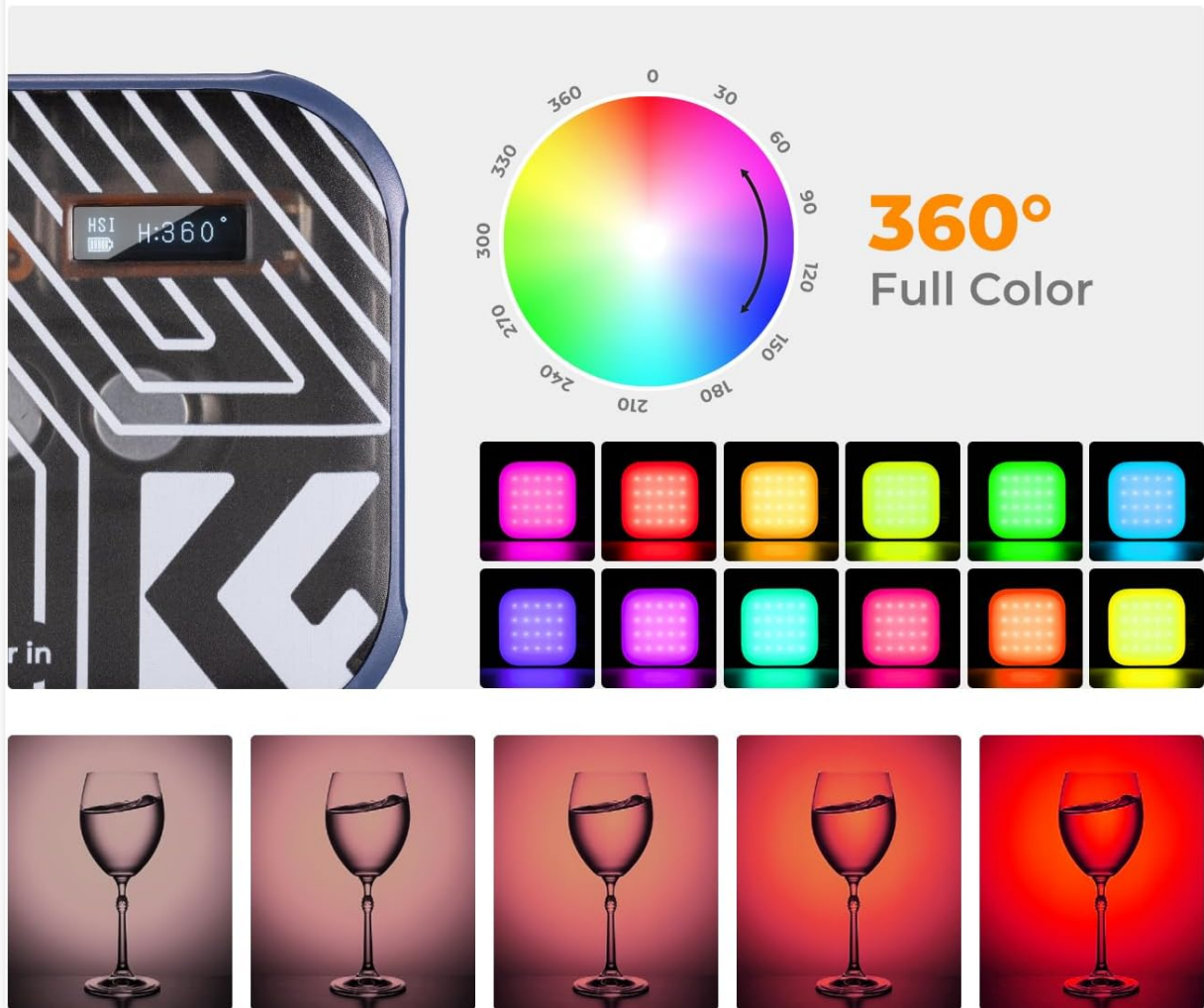


Figure 5.3: HSI Mode Adjustments

5.5 EFF Mode (Light Effects)

The EFF mode provides 21 pre-programmed lighting effects.

- **Selecting Effects:** Rotate the top knob to cycle through the 21 available light effects.
- **Adjusting Brightness:** Press the K Button/Mode Switch Button once to switch to brightness adjustment. Rotate the top knob to adjust brightness from 1% to 100%.

21

Light Effects

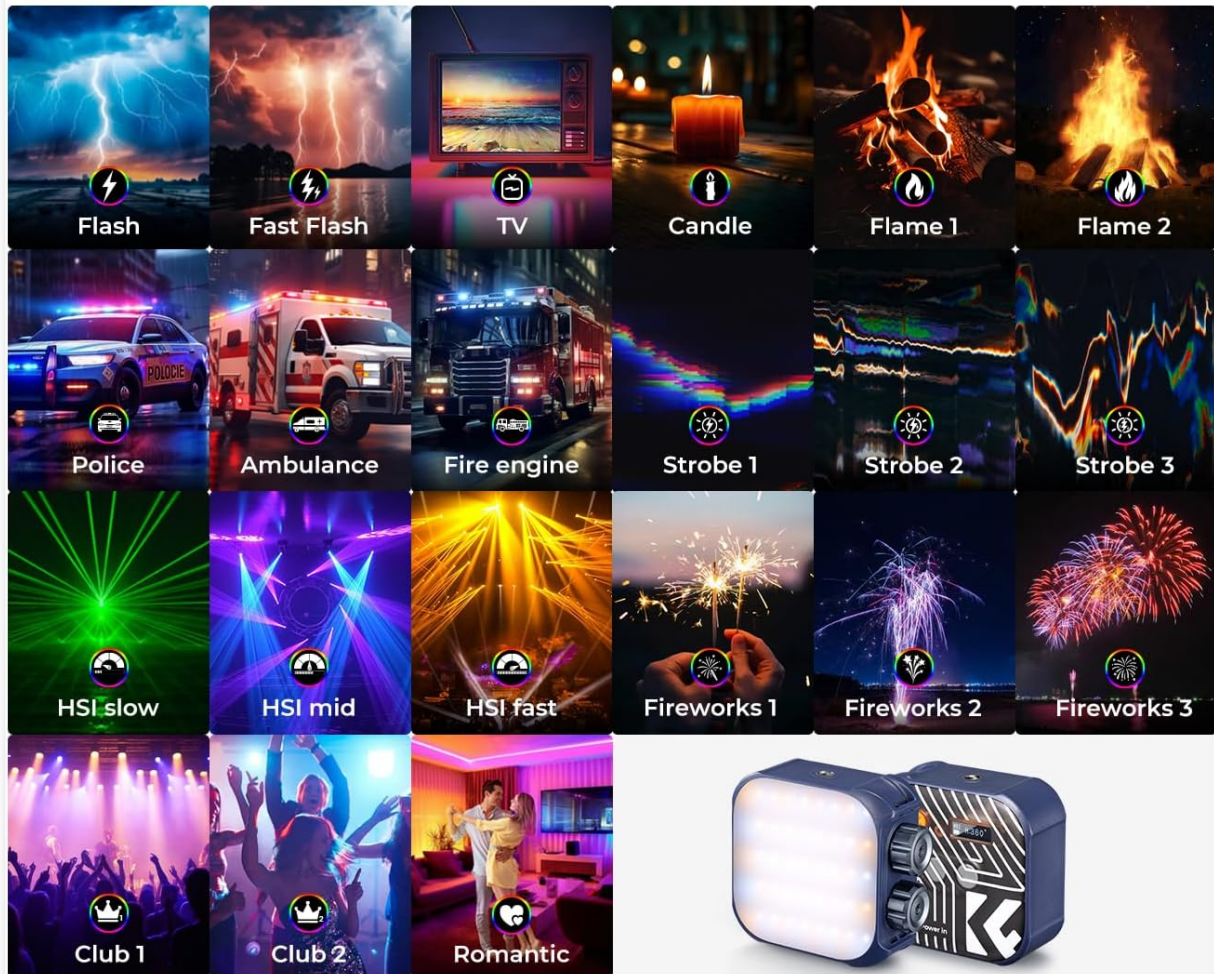


Figure 5.4: 21 Light Effects

6. CHARGING

The K&F Concept RGB Video Light features a built-in 2000mAh rechargeable lithium battery. A full charge takes approximately 2 hours. The light can provide a maximum brightness output for up to 2 hours and a minimum brightness output for up to 7.5 hours. The Type-C charging port allows for convenient charging, and the light can be used while charging, ensuring continuous operation.

7. INSTALLATION AND MOUNTING

The light offers various installation methods for flexibility in different shooting scenarios:

- **Light Stand Mounting:** Utilize the two 1/4" screw holes (one on top, one on bottom) to mount the light onto a light stand or tripod.
- **Camera Mounting:** Attach the included cold shoe adapter to one of the 1/4" screw holes, then slide it into your camera's hot/cold shoe mount.
- **Magnetic Attachment:** The product includes a magnet on the back, allowing it to be easily attached to

suitable metal objects for quick setup.

- **Lanyard Carrying:** Use the lanyard holes to attach a wrist strap or lanyard for convenient carrying or hanging.

Palm-size Light, Flexible Mounting

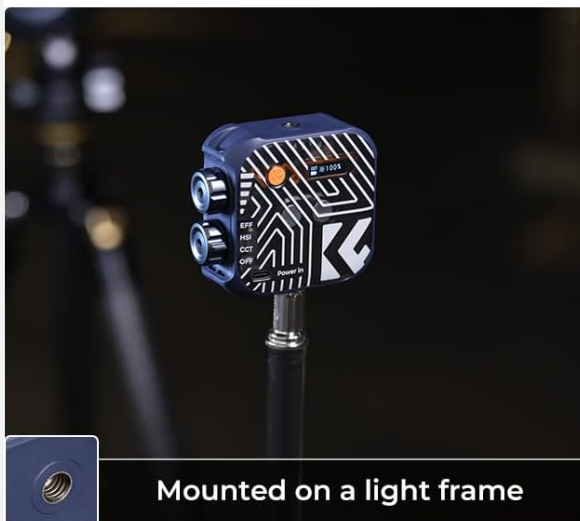
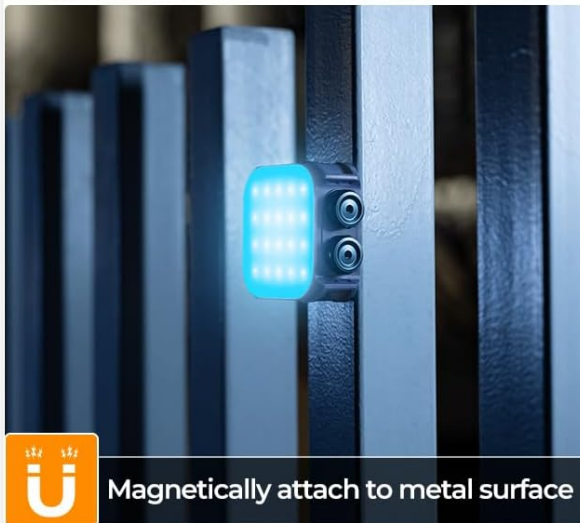


Figure 7.1: Flexible Mounting Options

8. SPECIFICATIONS

Feature	Specification
Model Number	KF34.036V2
Package Dimensions	5.04 x 3.74 x 1.85 inches
Item Weight	8.8 ounces
Battery Type	1 Lithium Ion battery (built-in)
Battery Capacity	2000mAh
Battery Life (Max Brightness)	2 Hours

Feature	Specification
Color Temperature Range	2500K-9900K
CRI (Color Rendering Index)	96+
Light Effects	21 modes
Hardware Interface	USB Type-C

9. MAINTENANCE

- **Cleaning:** Use a soft, dry cloth to clean the surface of the light. Do not use harsh chemicals or abrasive materials.
- **Storage:** Store the light in a cool, dry place away from direct sunlight and extreme temperatures. If storing for extended periods, charge the battery to approximately 50% every three months to maintain battery health.
- **Handling:** Avoid dropping or subjecting the light to strong impacts, as this may damage internal components.

10. TROUBLESHOOTING

- **Light not turning on:** Ensure the battery is charged. Connect the light to a power source using the USB-C cable. If the issue persists, contact customer support.
- **Light not charging:** Check the USB-C cable and power adapter. Try a different cable or power source. Ensure the charging port is clean and free of debris.
- **Incorrect color or brightness:** Verify that you are in the correct operating mode (CCT, HSI, EFF) and that the knobs are adjusted properly. Refer to Section 5 for detailed operating instructions.
- **LCD display not working:** Ensure the light is powered on. If the display remains blank or shows errors, try restarting the device. If the problem continues, contact customer support.

11. WARRANTY AND SUPPORT

K&F Concept products are designed and manufactured to the highest quality standards. For warranty information, technical support, or any inquiries regarding your product, please visit the official K&F Concept website or contact their customer service directly. Keep your purchase receipt as proof of purchase for warranty claims.

Official K&F Concept Store: <https://www.amazon.com/stores/KFCONCEPT/page/A4915C0D-40D8-4ADF-99E2-82769850FE3D>