

[Manuals.plus](#) /

› [K&F CONCEPT](#) /

› [K&F CONCEPT Bi-Color LED Video Light \(Model USKF34.035\) Instruction Manual](#)

K&F CONCEPT USKF34.035

K&F CONCEPT Bi-Color LED Video Light (Model USKF34.035) Instruction Manual

Your guide to operating and maintaining your portable photography light.

1. INTRODUCTION

Thank you for choosing the K&F CONCEPT Bi-Color LED Video Light. This compact and versatile lighting solution is designed to enhance your photography and videography with adjustable color temperature, brightness, and special effects. Please read this manual carefully to ensure proper usage and optimal performance.

2. PRODUCT OVERVIEW

Familiarize yourself with the components and controls of your LED video light.

External Knobs for Stepless Control

Stepless knobs to adjust color temperature and brightness



Figure 1: Diagram showing the various controls and ports on the K&F CONCEPT Bi-Color LED Video Light, including the K Button/Mode Switch, 1/4" Screw Hole, Lanyard Hole, Stepless Knob, Shutter Buttonhole, Switch Knob, LCD Display, and Type-C Charging Port.

- **K Button/Mode Switch Button:** Used to switch between different functions of the knobs and to cycle through light effects.
- **Stepless Knobs:** Two knobs for precise, stepless adjustment of brightness and color temperature.
- **LCD Display:** Shows current light parameters such as brightness, color temperature, and battery level.
- **Type-C Charging Port:** For charging the internal battery.
- **1/4" Screw Holes:** Two standard screw holes for mounting on tripods, light stands, or other accessories.
- **Lanyard Hole:** For attaching a wrist strap for portability.
- **Shutter Buttonhole:** Designed for installing a DIY shutter button (not included).

3. SETUP

3.1 Charging the Device

The LED video light features a built-in 2000mAh rechargeable lithium battery. Before first use, fully charge the device.

1. Connect the provided Type-C charging cable to the light's Type-C charging port.

2. Connect the other end of the cable to a compatible USB power source (e.g., wall adapter, power bank, computer USB port).
3. The LCD display will indicate charging status. A full charge typically takes approximately 2 hours.

2000mAh Built-in Battery



2 hrs
working time for
100% brightness



7.5 hrs
working time for
the least brightness



110 min
Charging Time



Figure 2: Image highlighting the 2000mAh built-in battery, showing a Type-C charging port and indicating working times of 2 hours at maximum brightness and 7.5 hours at minimum brightness, with a 110-minute charging time.

3.2 Mounting Options

The light offers multiple installation methods for various scenarios.

- **1/4" Screw Holes:** Use the two 1/4" screw holes to mount the light onto tripods, light stands, or other compatible accessories.
- **Cold Shoe Adapter:** Attach the included cold shoe adapter to one of the 1/4" screw holes, then mount the light onto a camera's hot/cold shoe.
- **Magnetic Attachment:** The product features magnets on the back, allowing it to be attached to metal objects for convenient placement.
- **Lanyard:** Use the lanyard hole to attach a wrist strap for secure carrying or hanging.

Palm-size Light, Flexible Mounting

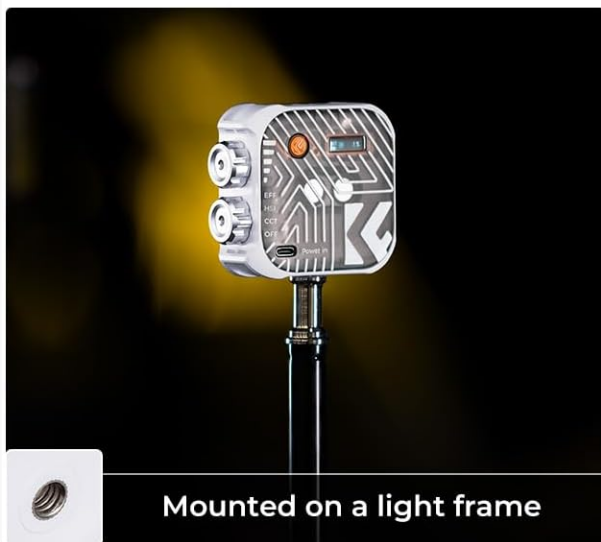


Figure 3: Four images illustrating the versatile mounting options: magnetically attached to a metal surface, hanging on the wrist with a lanyard, mounted on a light frame, and installed on a camera via a cold shoe adapter.

1/4" Screw Hole for Multiple Applications



1/4" Screw Hole



For Desktop Tripod Stand



For Phone Cage



For Camera

Figure 4: Examples of the K&F CONCEPT LED Video Light in various applications: Product Photography, Vlog Shooting, Video Conference, and Live Streaming, showcasing its versatility.

4. OPERATING INSTRUCTIONS

4.1 Power On/Off

To power on the device, rotate the bottom stepless knob from the "OFF" position to any desired mode (CCT, EFF, HSI). To power off, rotate the knob back to "OFF".

4.2 Adjusting Color Temperature (CCT Mode)

In CCT (Correlated Color Temperature) mode, you can adjust the color temperature from 2500K (warm) to 9900K (cold).

- Rotate the top stepless knob to adjust the color temperature. Each rotation adjusts by 100K.
- For quick adjustment to natural light, press the K Button/Mode Switch Button to select the fixed 5600K mode.

Stepless Adjust Color Temperature and Brightness

Two color temperature mode: customized or set (5600K), quickly adjust to natural light

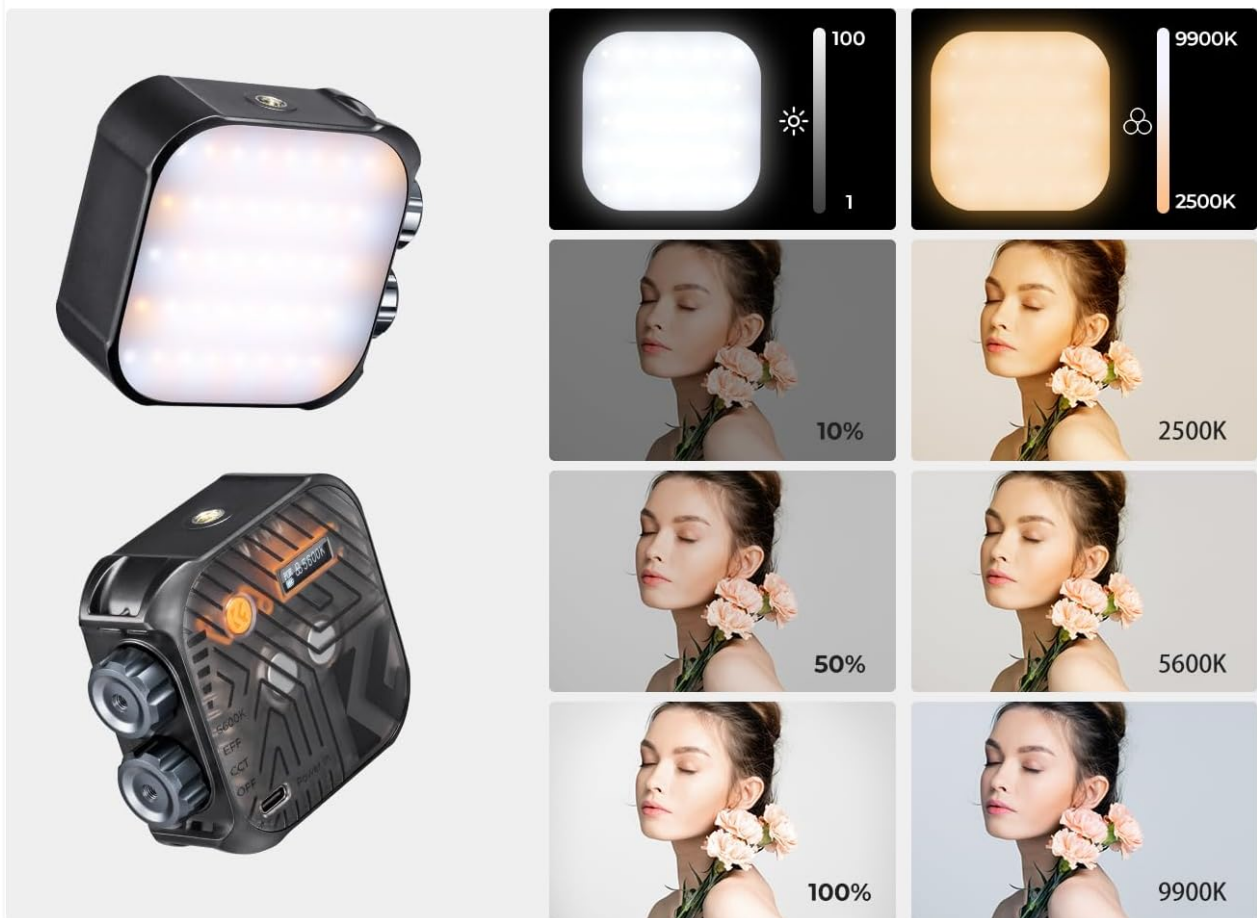


Figure 5: Visual representation of the stepless adjustment for color temperature (2500K-9900K) and brightness (10-100%), with examples of warm, soft, and cold light settings on a model's face.

2500K-9900K Color Temperature

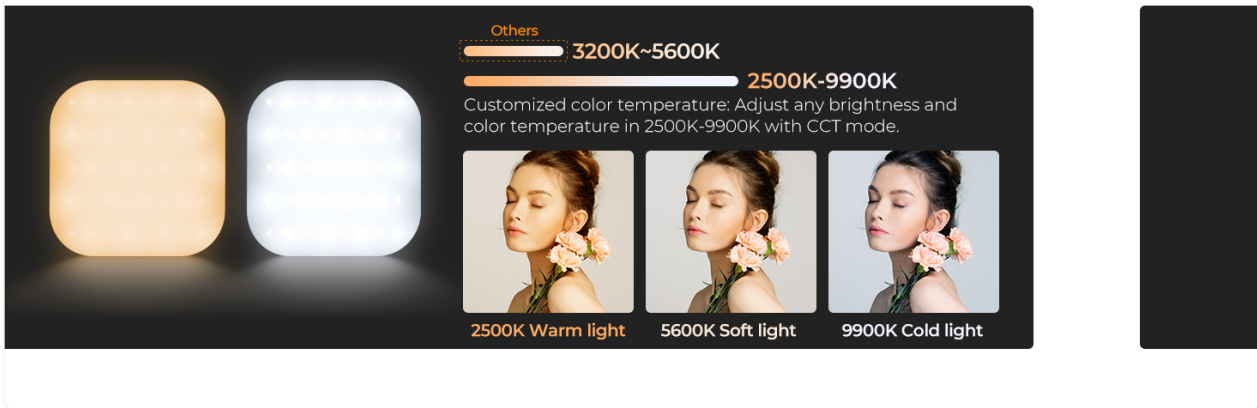


Figure 6: Detailed image showing the K&F CONCEPT LED Video Light's ability to adjust color temperature from 2500K (warm light) to 9900K (cold light), with a 5600K (soft light) example.

4.3 Adjusting Brightness

Brightness can be adjusted from 0% to 100% in CCT mode.

- Rotate the bottom stepless knob to increase or decrease the light intensity. Each rotation adjusts by 1%.

1-100% Brightness Adjustment

Max 900lux/0.5m

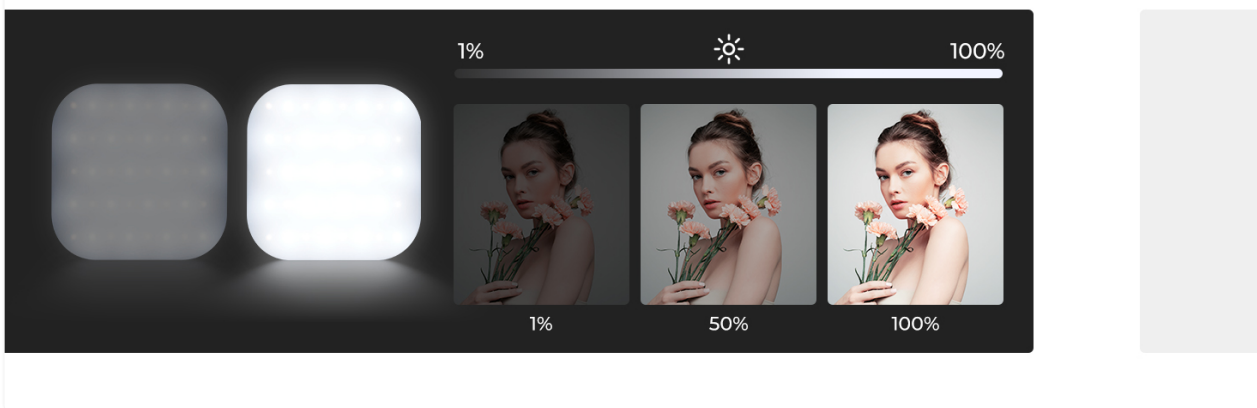


Figure 7: Visual guide demonstrating the 1-100% brightness adjustment capability of the K&F CONCEPT LED Video Light, with examples at 1%, 50%, and 100% intensity.

4.4 Special Light Effects (EFF Mode)

The light features 15 built-in special effects to enhance your creative content.

- Rotate the bottom stepless knob to "EFF" mode.
- Press the K Button/Mode Switch Button to cycle through the 15 different effects (e.g., Flash, TV Screen, Candle, Firework).
- Use the top stepless knob to adjust parameters specific to each effect, such as frequency or intensity.

15 Light Effects

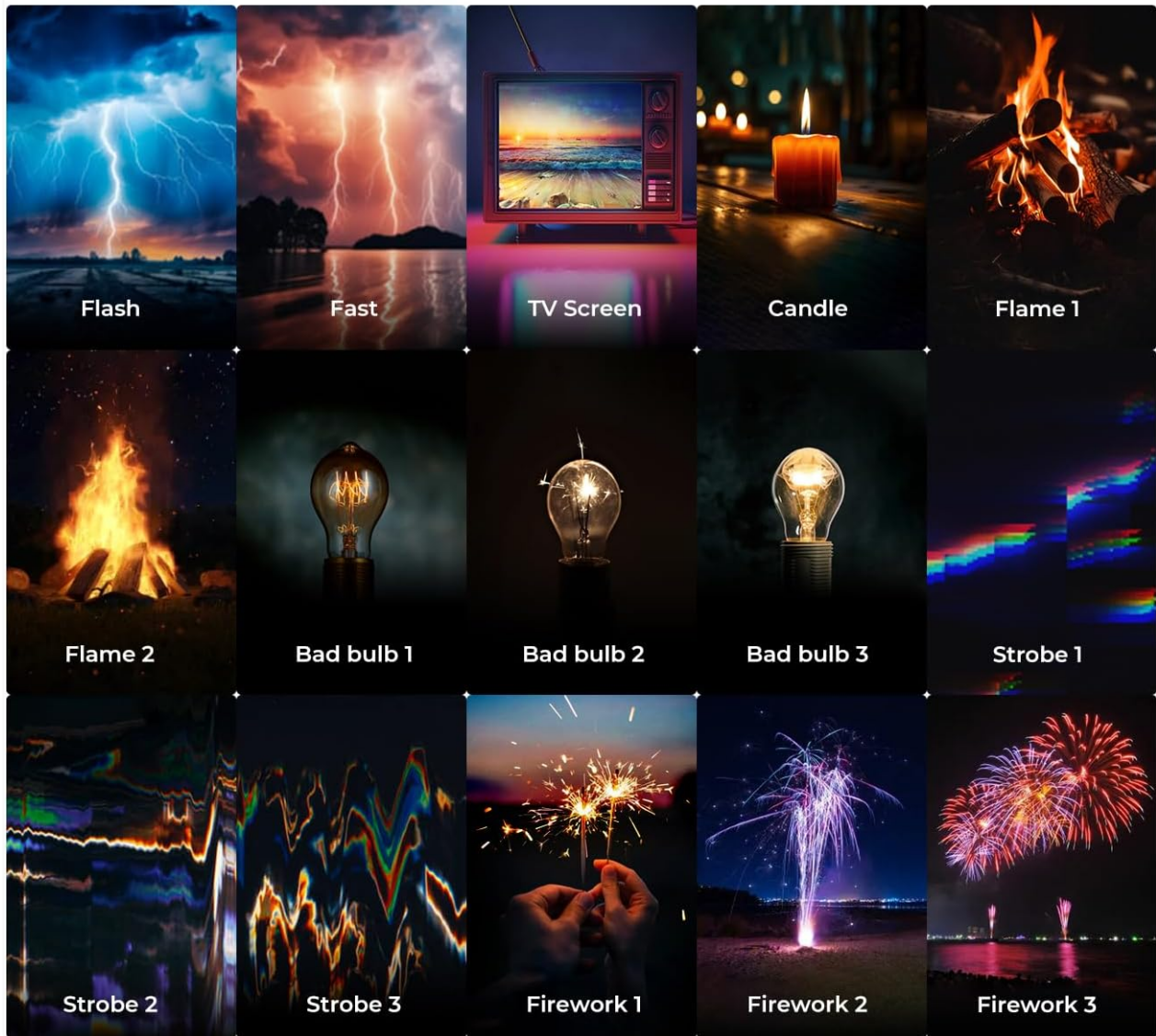


Figure 8: Collage displaying the 15 different built-in light effects, such as Flash, Fast, TV Screen, Candle, Flame, Bad Bulb, Strobe, and Firework, for creative lighting scenarios.

4.5 LCD Display

The integrated LCD screen provides real-time information about your light settings.

- Monitor battery level, current color temperature (in K), and brightness percentage.
- When in EFF mode, the display shows the active effect and its parameters.

LCD Screen

Easily check the brightness and color temperature



Figure 9: Close-up view of the integrated LCD screen on the K&F CONCEPT LED Video Light, clearly displaying current brightness and color temperature settings for easy monitoring.

5. MAINTENANCE

- **Cleaning:** Use a soft, dry cloth to clean the light. Do not use harsh chemicals or abrasive materials.
- **Storage:** Store the device in a cool, dry place away from direct sunlight and extreme temperatures.
- **Battery Care:** For optimal battery life, avoid fully discharging the battery frequently. Charge the device regularly, even if not in use for extended periods.
- **Water Resistance:** This product is **Not Water Resistant**. Avoid exposure to water or high humidity.

6. TROUBLESHOOTING

- **Light not turning on:** Ensure the battery is charged. Connect to a power source and try again. Check if the power knob is rotated to an active mode (CCT, EFF, HSI).
- **Light not adjusting:** Verify you are in the correct mode (CCT for color temperature/brightness, EFF for effects). Ensure the knobs are rotated correctly.
- **Short battery life:** Ensure the device is fully charged. Battery life varies with brightness settings (up to 2 hours at max brightness, up to 7.5 hours at min brightness).
- **Charging issues:** Use the provided Type-C cable. Ensure the power source is functional.

7. SPECIFICATIONS

Feature	Specification
Brand	K&F CONCEPT
Model Number	USKF34.035
Battery Capacity	2000mAh
Battery Life (Max Brightness)	2 Hours
Battery Life (Min Brightness)	7.5 Hours
Charging Time	Approx. 2 Hours
Color Temperature Range	2500K-9900K

Fixed Color Temperature Mode	5600K
CRI (Color Rendering Index)	96+
Brightness Adjustment	0-100%
Light Effects	15 Built-in Effects
Charging Port	Type-C
Mounting Options	1/4" Screw Holes, Cold Shoe, Magnetic Back, Lanyard Hole
Product Dimensions	6.38"L x 4.13"W x 1.78"H
Water Resistance Level	Not Water Resistant

8. WARRANTY AND SUPPORT

This K&F CONCEPT product comes with a **1-Year Warranty** from the date of purchase. For warranty claims, technical support, or any inquiries, please contact K&F CONCEPT customer service through your retailer or the official K&F CONCEPT website.

9. PRODUCT VIDEOS

Watch these official product videos for a visual guide on features and usage.

Your browser does not support the video tag.

Video 1: This video provides a detailed overview of the K&F CONCEPT Bi-Color LED Video Light, demonstrating its controls, various light modes, and mounting options. It highlights the functionality of the knobs for adjusting color temperature and intensity, as well as the different female tripod threads available on the device.

Your browser does not support the video tag.

Video 2: This video showcases the K&F CONCEPT Bi-Color LED Camera Light, demonstrating its compact size, adjustable color temperature, and various light effects. It illustrates how the light can be used in different scenarios and highlights its portability and ease of use.

Your browser does not support the video tag.

Video 3: This video demonstrates the K&F CONCEPT Bi-Color LED Video Light's charging process via its Type-C port and shows the light being used with a cold shoe mount. It highlights the light's compact design and its ability to provide bright illumination for various needs.