

[Manuals.plus](#) /

› [K&F CONCEPT](#) /

› K&F CONCEPT RGB Video Light (Model USKF34.036) User Manual

K&F CONCEPT USKF34.036

K&F CONCEPT RGB Video Light (Model USKF34.036) User Manual

Portable Photography Light with 360° Full Color and 21 Light Effects

1. INTRODUCTION

This manual provides detailed instructions for the safe and effective operation of your K&F CONCEPT RGB Video Light, Model USKF34.036. Please read this manual thoroughly before use and retain it for future reference. This device is designed to provide versatile lighting for photography and videography applications.



Image 1.1: K&F CONCEPT RGB Video Light (Model USKF34.036)

2. PRODUCT FEATURES

- **Professional RGB Lighting:** Equipped with 60 high-quality LED beads (20 white, 20 warm, 20 RGB) for accurate color reproduction with a Color Rendering Index (CRI) of 96+.
- **Dual Lighting Modes:**
 - **CCT Mode:** Adjustable color temperature from 2500K (warm) to 9900K (cool) and brightness from 1% to 100%.
 - **HSI Mode:** Full 360° hue adjustment and saturation control for creative color effects.
- **21 Built-in Light Effects:** Pre-programmed special effects to enhance creative shooting scenarios.
- **Integrated Rechargeable Battery:** 2000mAh lithium battery provides up to 2 hours of operation at maximum brightness or 7.5 hours at minimum brightness. Charges via Type-C port in approximately 2 hours.
- **Intuitive Control:** Features an LCD display for clear parameter viewing and infinitely variable metal knobs for precise adjustments.
- **Multiple Mounting Options:** Includes two 1/4" screw holes for light stands, cold shoe adapter

compatibility for camera mounting, a magnetic back for attachment to metal surfaces, and lanyard holes for portability.

3. PACKAGE CONTENTS

Verify that all items are present in your package:

- 1 x K&F CONCEPT RGB Video Light (Model USKF34.036)
- 1 x USB Type-C Charging Cable
- 1 x Cold Shoe Adapter
- 1 x User Manual



Image 3.1: K&F CONCEPT RGB Video Light with its retail packaging.

4. PRODUCT OVERVIEW

Familiarize yourself with the components of your RGB Video Light:

External Knobs for Stepless Control

Stepless knobs to adjust color temperature and brightness

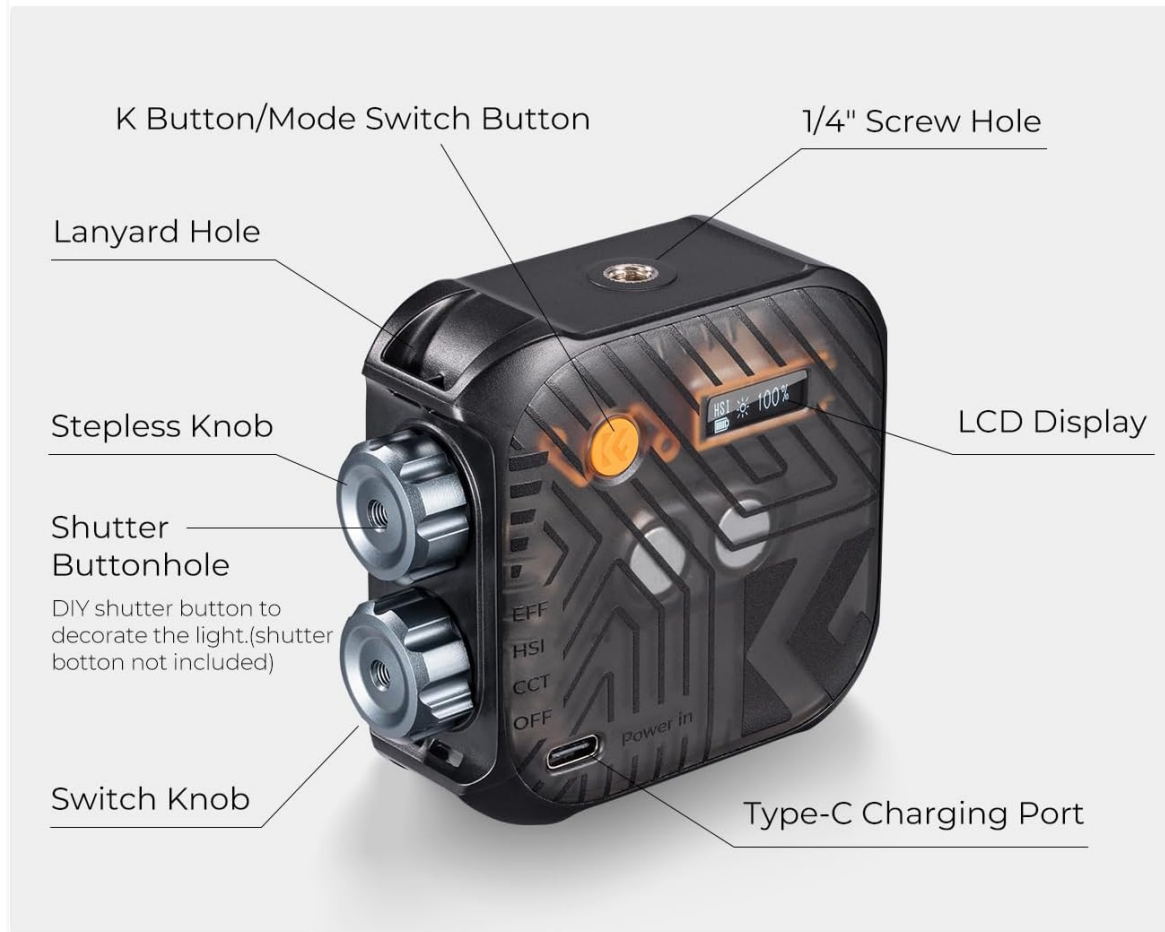


Image 4.1: Labeled diagram of the K&F CONCEPT RGB Video Light components.

- **K Button/Mode Switch Button:** Press to cycle through CCT, HSI, and Effect modes. Long press to power on/off.
- **1/4" Screw Hole:** For mounting on tripods, light stands, or other accessories.
- **Lanyard Hole:** For attaching a wrist lanyard for secure carrying.
- **Stepless Knob:** Adjusts brightness, color temperature, hue, or saturation depending on the selected mode.
- **Shutter Buttonhole:** Designed for installing an external shutter button (not included).
- **Switch Knob:** Used in conjunction with the K button for fine adjustments and mode navigation.
- **Type-C Charging Port:** For charging the internal battery.
- **LCD Display:** Shows current mode, brightness, color temperature/hue, and battery status.

5. SETUP

5.1 Initial Charging

Before first use, fully charge the device. Connect the supplied USB Type-C cable to the charging port on the light and to a compatible USB power source (e.g., wall adapter, computer USB port, power bank). The LCD display will indicate charging status. A full charge takes approximately 2 hours.

5.2 Mounting the Light

The RGB Video Light offers several mounting options:

- **On a Light Stand/Tripod:** Use the 1/4" screw holes located on the top and bottom of the light to attach it to a compatible light stand or tripod.
- **On a Camera:** Attach the included cold shoe adapter to one of the 1/4" screw holes, then slide the adapter into your camera's hot shoe or cold shoe mount.
- **Magnetic Attachment:** The back of the light contains a magnet, allowing it to be securely attached to suitable metal surfaces.
- **Lanyard:** Thread a lanyard (not included) through the lanyard hole for wrist carrying or hanging.

Palm-size Light, Flexible Mounting

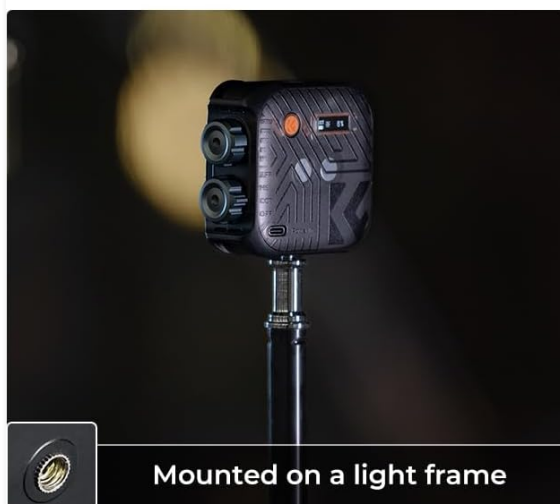
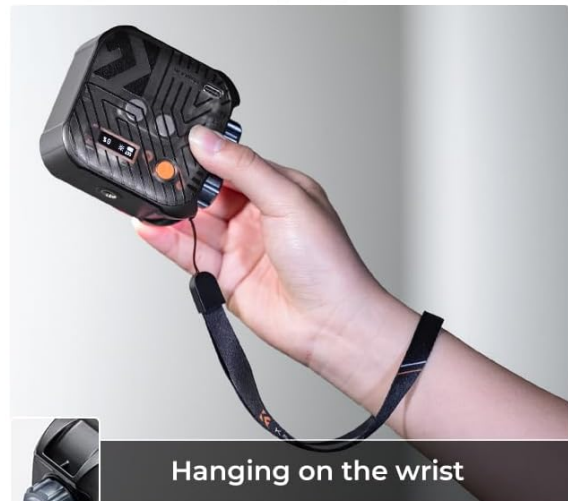


Image 5.1: Various mounting methods for the RGB Video Light.

6. OPERATING INSTRUCTIONS

6.1 Power On/Off

- **To Power On:** Long press the **K Button/Mode Switch Button** until the LCD display illuminates.
- **To Power Off:** Long press the **K Button/Mode Switch Button** again until the display turns off.

6.2 Mode Selection

Short press the **K Button/Mode Switch Button** to cycle through the three main lighting modes:

1. **CCT Mode (Color Temperature Mode):** For white and warm light adjustments.
2. **HSI Mode (Hue, Saturation, Intensity Mode):** For full-color RGB adjustments.
3. **EFF Mode (Effect Mode):** For special lighting effects.

Three Types of Light Modes

CCT: Color Temperature Mode, adjust any color temperature ranges from 2500K to 9900K and any brightness;

EFF: Light Effects Mode, 21 light effects

HSI: RGB Mode, 360° adjustment of light color and different saturation levels



Image 6.1: Overview of the three light modes.

6.3 CCT Mode Operation

In CCT Mode, the LCD displays 'CCT', color temperature (K), and brightness (%).

- **Adjust Brightness:** Rotate the **Stepless Knob** to adjust brightness from 1% to 100%.
- **Adjust Color Temperature:** Press the **Switch Knob** to toggle to color temperature adjustment. Rotate the **Stepless Knob** to change the color temperature from 2500K to 9900K.

Stepless Adjust Color Temperature and Brightness



6W



60 LED beads



CRI 96+



2500K-9900K



1-100%

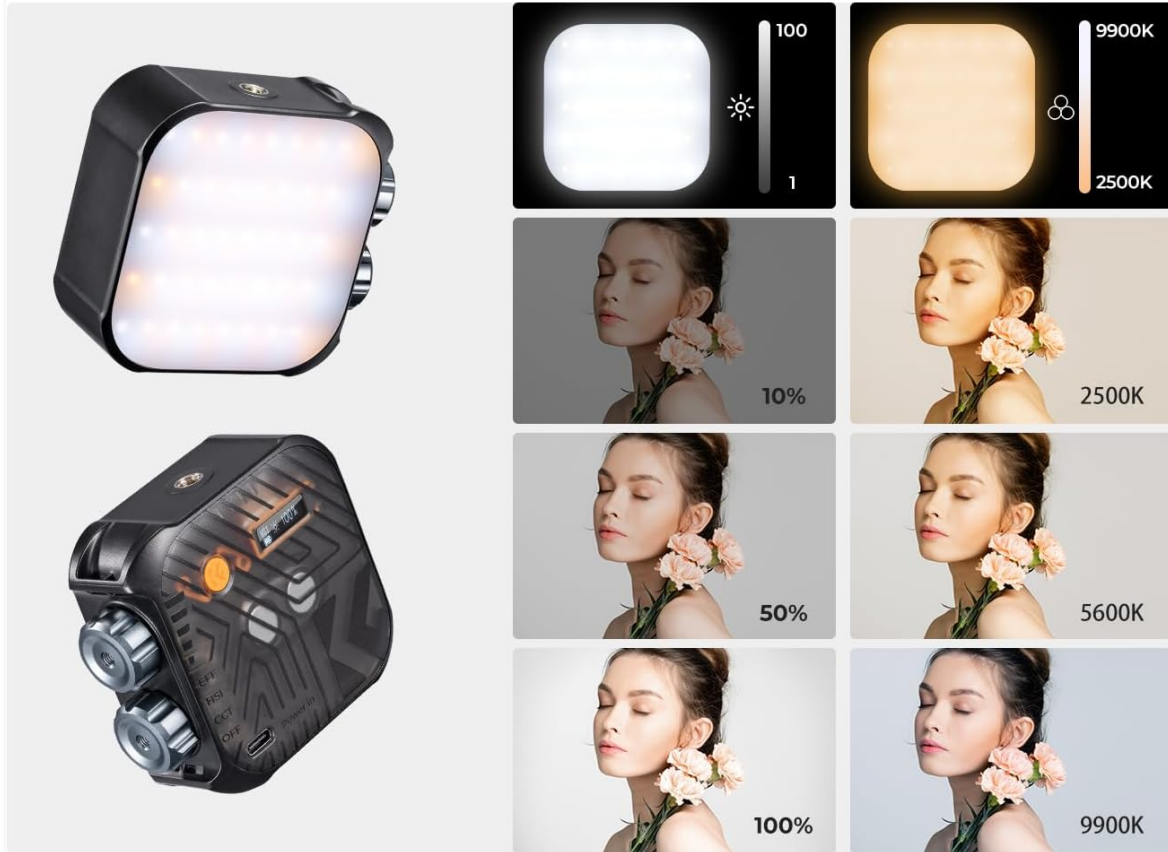


Image 6.2: CCT mode for color temperature and brightness adjustment.

6.4 HSI Mode Operation

In HSI Mode, the LCD displays 'HSI', hue (H: 0°-360°), and saturation (S: 0-100%).

- **Adjust Hue:** Rotate the **Stepless Knob** to change the hue from 0° to 360° for full-color spectrum selection.
- **Adjust Saturation:** Press the **Switch Knob** to toggle to saturation adjustment. Rotate the **Stepless Knob** to adjust color saturation.
- **Adjust Brightness:** Press the **Switch Knob** again to toggle to brightness adjustment. Rotate the **Stepless Knob** to adjust brightness from 1% to 100%.

Make Every Shot Stunning

360° full color, adjustable saturation and brightness



Image 6.3: HSI mode for 360° full color adjustment.

6.5 EFF Mode Operation (Light Effects)

In EFF Mode, the LCD displays 'EFF' and the current effect number/name.

- **Select Effect:** Rotate the **Stepless Knob** to cycle through the 21 built-in light effects.
- **Adjust Effect Parameters:** For some effects, pressing the **Switch Knob** may allow adjustment of parameters like speed or intensity.

21

Light Effects

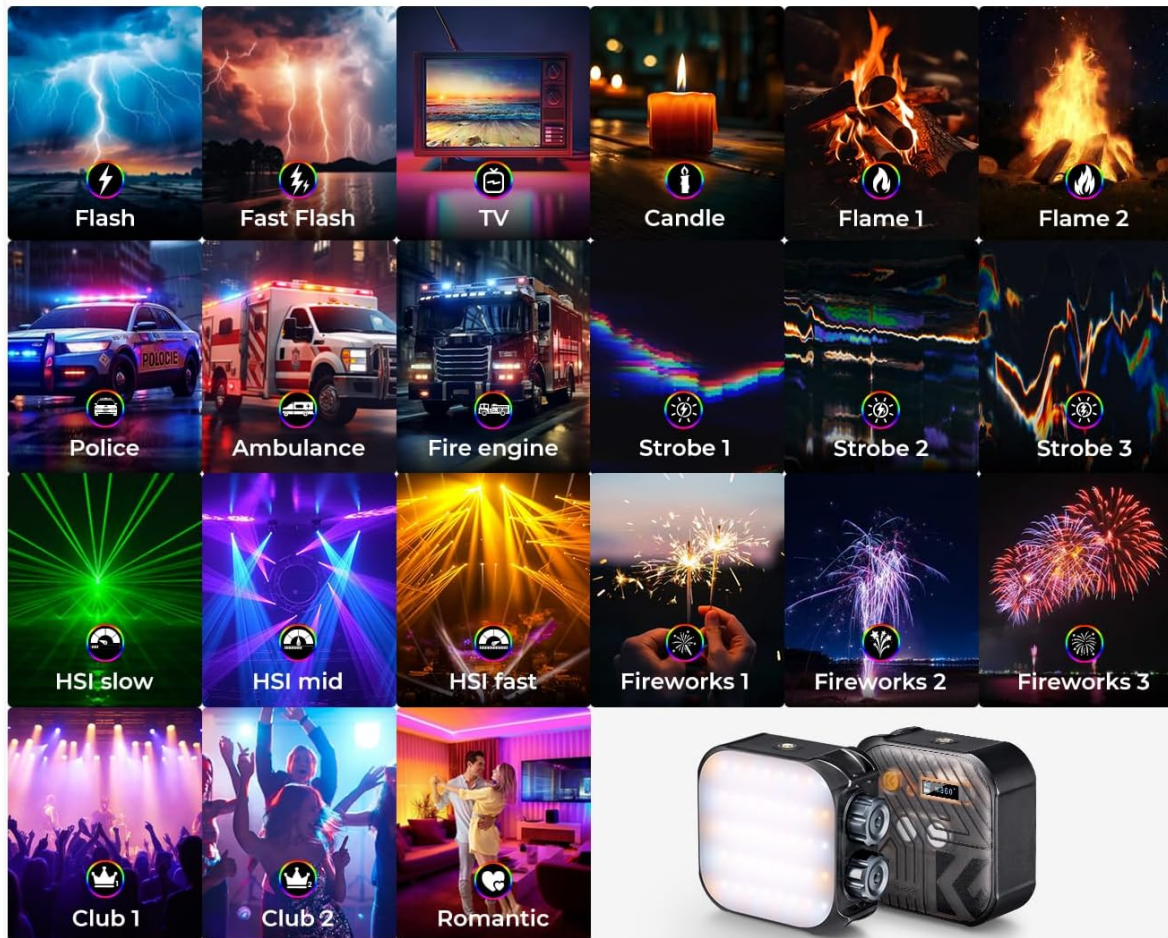


Image 6.4: Visual representation of the 21 available light effects.

6.6 LCD Display

The LCD display provides real-time information about the light's settings and battery status. It shows the active mode (CCT, HSI, EFF), brightness percentage, color temperature or hue/saturation values, and a battery level indicator.

LCD Screen

Easily check the brightness and color temperature



Image 6.5: LCD screen displaying current settings.

7. CHARGING

The K&F CONCEPT RGB Video Light features a built-in 2000mAh rechargeable lithium battery. To charge the device, connect the provided USB Type-C cable to the charging port on the light and to a standard USB power adapter (5V/2A recommended).

- **Charging Time:** Approximately 2 hours for a full charge.
- **Battery Life:** Up to 2 hours at 100% brightness, and up to 7.5 hours at minimum brightness.
- **Operation While Charging:** The light can be used while it is connected to a power source and charging.

2000mAh Built-in Battery



2 hrs
working time for
100% brightness



7.5 hrs
working time for
the least brightness



110 min
Charging Time



Image 7.1: Charging the RGB Video Light.

8. MAINTENANCE

- **Cleaning:** Use a soft, dry cloth to clean the exterior of the light. Do not use abrasive cleaners or solvents.
- **Storage:** Store the light in a cool, dry place away from direct sunlight and extreme temperatures. If storing for extended periods, ensure the battery is partially charged (around 50%) to prolong its lifespan.
- **Battery Care:** Avoid fully discharging the battery frequently. Recharge the battery regularly, even if the light is not in use, to maintain battery health.
- **Avoid Impact:** Protect the light from drops and impacts, which can damage internal components or the LED panel.

9. TROUBLESHOOTING

Problem	Possible Cause	Solution
Light does not turn on	Battery is depleted	Charge the light using the Type-C cable.
Light does not charge	Faulty cable or power adapter	Try a different USB Type-C cable and power adapter. Ensure the connection is secure.
Inconsistent light output	Low battery level	Recharge the battery.
Controls are unresponsive	Temporary software glitch	Power off the device and then power it back on.

10. SPECIFICATIONS

Feature	Detail
Model Number	USKF34.036
LED Beads	60 (20 White, 20 Warm, 20 RGB)
Color Temperature Range	2500K - 9900K
CRI (Color Rendering Index)	96+
Hue Adjustment	0° - 360°
Brightness Adjustment	1% - 100%
Light Effects	21 built-in effects
Battery Capacity	2000mAh Lithium Battery

Feature	Detail
Charging Port	USB Type-C
Charging Time	Approx. 2 hours
Battery Life (Max Brightness)	Up to 2 hours
Battery Life (Min Brightness)	Up to 7.5 hours
Item Weight	5.9 ounces (167 grams)
Package Dimensions	5.12 x 3.7 x 1.85 inches
Connectivity Technology	USB
Hardware Interface	USB
Manufacturer	Shenzhen Zhuoer Photograph
Date First Available	February 21, 2024

11. WARRANTY AND SUPPORT

For warranty information and technical support, please refer to the documentation included with your purchase or contact K&F CONCEPT directly through their official website or customer service channels. Keep your proof of purchase for warranty claims.