

TTARTISAN 500mm F6.3

TTArtisan 500mm F6.3 Telephoto Lens User Manual

Model: 500mm F6.3 for Nikon F-Mount

INTRODUCTION

The TTArtisan 500mm F6.3 Telephoto Lens is designed for capturing distant subjects with exceptional clarity. This manual provides essential information for the proper setup, operation, and maintenance of your lens to ensure optimal performance and longevity.

This lens features 2 ED glass elements to reduce chromatic aberration, a manual focus system, and an aperture range from F6.3 to F32. It is equipped with a tripod mount ring and accepts 82mm filters.

WHAT'S IN THE BOX

- Lens Body
- Front Lens Cap
- Rear Cap
- Lens Hood
- User Manual
- Warranty Card

SETUP

1. Attaching the Lens to Your Camera

1. Ensure your camera is powered off.
2. Remove the rear lens cap from the TTArtisan 500mm F6.3 lens and the body cap from your Nikon F-Mount camera.
3. Align the mounting index mark on the lens with the corresponding mark on your camera body.
4. Insert the lens into the camera mount and rotate it clockwise until it clicks securely into place.

2. Attaching the Tripod Mount Ring

The lens comes with a built-in tripod mount ring for stable support, especially given its size and weight. This ring allows you to rotate the camera for portrait or landscape orientation without detaching the lens from the tripod.



“Get Closer” to the World

The telephoto lens is ideal for photographing distant subjects that you cannot get closer to.

Such as airplanes, sports and wildlife, etc.

Image: The TTArtisan 500mm F6.3 lens securely attached to a camera and mounted on a tripod using its integrated tripod mount ring.

3. Attaching the Lens Hood

The metal lens hood helps to prevent flare and ghosting by blocking stray light from entering the lens. Align the hood with the front of the lens and twist it gently until it locks into place.



Image: A metal lens hood, designed to reduce lens flare and protect the front element.

Important Safety Warning



Image: A warning against holding the lens solely by the tripod mount ring, as loose screws could cause the lens to fall.

WARNING: Do not hold the lens directly by the tripod mount ring when carrying or moving the camera and lens assembly. Always support the main lens body to prevent accidental detachment due to loose screws or unexpected movement.

OPERATING INSTRUCTIONS

1. Manual Focus

This is a manual focus lens. To achieve sharp images, rotate the focus ring until your subject appears clear in the viewfinder or on your camera's LCD screen. Many modern cameras offer focus peaking or magnification aids to assist with manual focusing.



Comes with Tripod Mount Ring

TTArtisan 500mm F6.3 comes with a tripod mount ring to keep the camera and lens balanced on the tripod.

Image: The focus gear ring, used for precise manual focusing.

2. Aperture Adjustment

The lens features an aperture ring with settings from F6.3 to F32. Rotate this ring to select your desired aperture. A wider aperture (smaller f-number like F6.3) allows more light and creates a shallower depth of field, while a narrower aperture (larger f-number like F32) allows less light and provides a greater depth of field.

3. Using the Tripod Mount

For optimal stability, especially with a 500mm telephoto lens, always use a sturdy tripod. The tripod mount ring on the lens allows for better balance and prevents strain on your camera's lens mount.

4. Compatibility

This lens is compatible with Nikon F-Mount SLR Cameras including models such as Df, D5, D6, D850, D810A, D810, D780, D750, and D610.

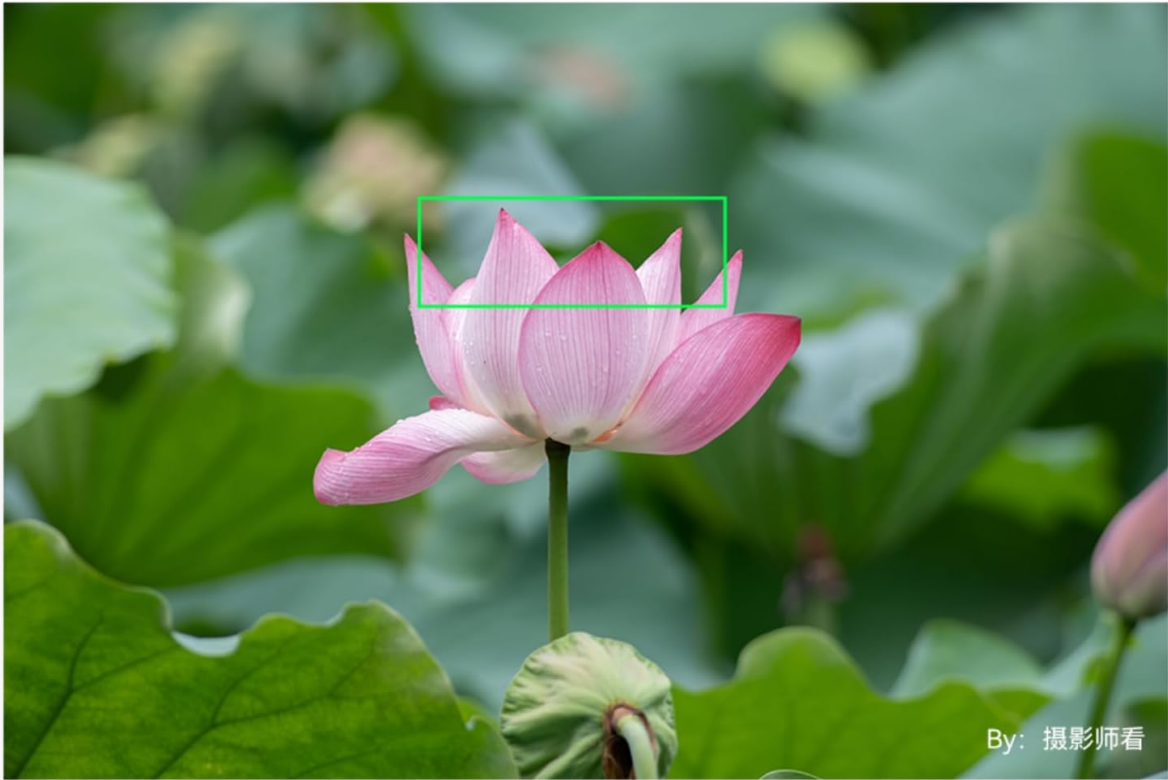


Image: List of compatible camera models for various mounts, including Nikon F-mount.

5. Sample Photography

Observe the capabilities of the TTArtisan 500mm F6.3 lens in various scenarios, from distant wildlife to celestial bodies.



By: 毛毛环游世界
Cropped at 65% zoom

Image: A detailed shot of the moon, demonstrating the lens's reach and clarity for astrophotography.

- Never use abrasive materials or harsh chemicals on the lens elements.

2. Storage

- Always attach the front and rear lens caps when the lens is not in use.
- Store the lens in a cool, dry place, away from direct sunlight and extreme temperatures.
- If storing for extended periods, consider using a dehumidifying cabinet or silica gel packets to prevent mold growth.

TROUBLESHOOTING

1. Blurry Images

- **Check Focus:** Ensure the lens is properly focused manually. Use your camera's focus aids if available.
- **Camera Shake:** At 500mm, even slight camera movement can cause blur. Use a sturdy tripod and a remote shutter release or timer.
- **Shutter Speed:** Use a sufficiently fast shutter speed to freeze motion and minimize camera shake. A general rule is 1/focal length (e.g., 1/500s or faster for a 500mm lens).
- **Aperture:** While F6.3 is wide, ensure it's appropriate for your subject's depth.

2. Lens Not Mounting Securely

- Ensure the lens and camera mount are clean and free of debris.
- Align the index marks correctly and rotate until a distinct click is heard.

3. Dust or Spots on Images

- Clean the front and rear elements of the lens as described in the Maintenance section.
- If spots persist, the issue might be dust on your camera's sensor. Refer to your camera manual for sensor cleaning procedures or consult a professional.

SPECIFICATIONS

Feature	Detail
Brand	TTARTISAN
Model Name	TTArtisan 500mm f6.3
Focal Length	500mm
Lens Type	Telephoto, Prime
Compatible Mountings	Nikon F

Focus Type	Manual Focus
Maximum Aperture	F6.3
Minimum Aperture	F32
Number of Diaphragm Blades	12
Filter Size	82mm
Optical Design	8 Elements in 5 Groups (including 2 ED glass elements)
Closest Focusing Distance	3.3m
Real Angle Of View	5 Degrees
Image Stabilization	No image stabilization
Water Resistance Level	Not Water Resistant

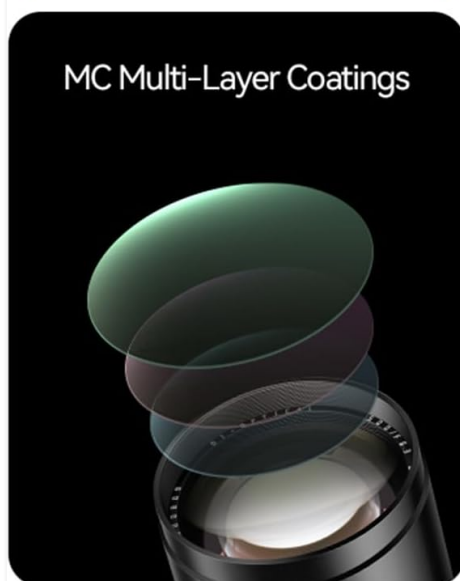
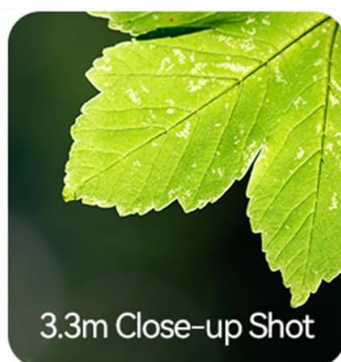


Image: Product diagram showing lens dimensions and key features like filter size and focal length.

APPLICABLE MODELS

SONY E-mount

A7, A7II(A7M2), A7III(A7M3), A7RII(A7M4), A7R, A7RII(A7RM2), A7RIII(A7RM3), A7RIV(A7RM4), A7RV(A7RM5), A7S, A7SII(A7SM2), A7SIII(A7SM3), A7C, A7CR, A7CII, A1, A9, A9II, ZV-E1, FX3 ,etc.
A5000, A5100, A6000, A6100, A6300, A6400, A6500, A6600, A6700, NEX-3, NEX-3N, NEX-3R, NEX-5T, NEX-5R, NEX-5, NEX-5N, NEX5C, NEX-7, ZVE-10, FX30 ,etc.

FUJI X-mount

X-A1, X-A10, X-A2, X-A3, X-A5, X-A7, X-M1, X-M5, X-H1, X-H2, X-H2S
X-T1, X-T10, X-T100, X-T2, X-T20, X-T200, X-T3, X-T30, X-T30II, X-T4, X-T5, X-T50, X-Pro1, X-Pro2, X-Pro3; X-E1, X-E2, X-E2S, X-E3, X-E4, X-S10, X-S20 ,etc.

Nikon Z-mount

Z5, Z6, Z7, Z6II, Z7II, Z9, Z8, ZF ,etc.
Z50, ZFC, Z30 ,etc.

Canon RF-mount

EOSR, RP, R5, R5C, R6, R6ii, R3, R8 ,etc.
R7, R10, R50, R100

L-mount

Leica: T, TL, TL2, CL, SL, SL2
Panasonic: S1/S1M/S1R/S1RM/S1H/
S1K/S5/S5K/S5C/S5II/S5III/
S5IIC/S5IIW/S5IIX
Sigma: FP, FPL

Nikon F-mount

Df, D5, D6, D850, D810A, D810,
D780, D750, D610... ,etc.

Canon EF-mount

EOS-1D X Mark III, EOS 5D Mark
IV, EOS 6D Mark IV... ,etc.

FUJI GFX-mount

GFX50S, GFX50R, GFX50SII;
GFX100, GFX100S, GFX100II ,etc.

Image: Optical design diagram of the lens, showing the arrangement of elements including ED glass.

WARRANTY INFORMATION

The TTArtisan 500mm F6.3 Telephoto Lens comes with a **1-year warranty** from the date of purchase. This warranty covers manufacturing defects and ensures quality assurance.

For additional protection, extended plans may be available:

- **3-Year Protection Plan:** Available for a one-time payment of \$48.99.
- **Complete Protect:** A monthly renewal policy for \$16.99, covering eligible past and future purchases.

Please retain your proof of purchase and warranty card for any claims.

SUPPORT

For further assistance, product inquiries, or technical support, please contact TTArtisan directly.

You can visit the official TtArtisan store for more information and support resources:[TtArtisan Official Store](#)

Manufacturer: TtArtisan