

## Inefala 8 Core/4+64G Android 15 Double Din Car Radio Stereo

# Inefala Android 15 Double Din Car Radio Stereo User Manual

Model: 8 Core/4+64G Android 15 Double Din Car Radio Stereo

Brand: Inefala

## 1. INTRODUCTION

Thank you for choosing the Inefala 8 Core/4+64G Android 15 Double Din Car Radio Stereo. This advanced car multimedia system is designed to enhance your driving experience with its powerful features, including a 9-inch HD touchscreen, wireless Carplay and Android Auto, 4G/WiFi connectivity, GPS navigation, and superior audio processing. This manual provides detailed instructions for installation, operation, maintenance, and troubleshooting to ensure optimal performance and user satisfaction.

## 2. PRODUCT FEATURES

- **High-Performance System:** Equipped with an 8-core processor, 4GB RAM, and 64GB ROM, running on the latest Android 15 operating system for smooth and responsive operation. Features a 9-inch 1080P HD touchscreen (1280\*720 resolution) with 2.5D arc edge anti-scratch tempered glass.
- **Wired/Wireless Carplay & Android Auto:** Seamlessly integrate your smartphone for access to apps, calls, messages, music, and voice assistants (Siri/Google Assistant).
- **Advanced Connectivity:** Built-in 4G WiFi capabilities and support for SIM card insertion for wireless internet access. Integrated GPS for online and offline navigation.
- **Superior Audio:** Bluetooth 5.0 for stable wireless connections. FM/AM/RDS radio with clear channel search. Built-in DSP tuning technology for balanced and clear sound, including a 32-band equalizer.
- **Enhanced Safety:** Includes an AHD backup camera for automatic display when reversing.
- **Versatile Inputs/Outputs:** Dual USB ports, video output/input RCA ports, and Mirror Link support for displaying mobile phone screens.
- **Steering Wheel Control (SWC):** Compatible with vehicle's existing steering wheel controls for convenient

operation.

### 3. WHAT'S IN THE BOX

---

- 1 x Inefala Android Car Radio
- 1 x Power Cable
- 1 x RCA Input / Output Cable
- 1 x Backup Camera Input Cable
- 1 x 4G Module
- 2 x USB Cable
- 1 x USB Adapter Cable
- 1 x GPS Antenna
- 1 x Mounting Bracket
- 1 x Users Manual
- 1 x Installation Tool
- 1 x Backup Camera
- 1 x Microphone

### 4. SETUP & INSTALLATION

---

#### 4.1 Physical Installation

Before beginning installation, ensure your vehicle's power is off. Carefully follow the wiring diagrams provided with your unit. Professional installation is recommended.



The Inefala Android Car Radio Stereo main unit shown with its various included accessories, including cables for Carplay/Android Auto, a 4G module, microphone, and backup camera.



A detailed view of the rear panel of the car radio, highlighting the various connection ports for power, audio/video, GPS antenna, and other peripherals.

# Connection Reference



A visual guide illustrating the connection points for the GPS antenna, USB cables, rear camera input, 4G module, RCA cables, and power cable on the car radio unit.

## 4.2 SIM Card Installation & Activation

The Inefala car radio supports SIM card insertion for 4G connectivity. Follow these steps to install and activate your SIM card:

1. Ensure the device is turned off before inserting the SIM card into the designated slot on the 4G module.
2. Connect the 4G module to the car radio.
3. Power on the device.
4. Navigate to **Settings > More > About Device > SIM Card Switch**.
5. Select **External SIM Card** to activate.
6. If the SIM card is not activated after these steps, power off the device completely and restart it.

Official video demonstrating the correct procedure for inserting a SIM card into the Inefala car radio's 4G module and activating it through the system settings.

## 5. OPERATING INSTRUCTIONS

### 5.1 Basic Operations

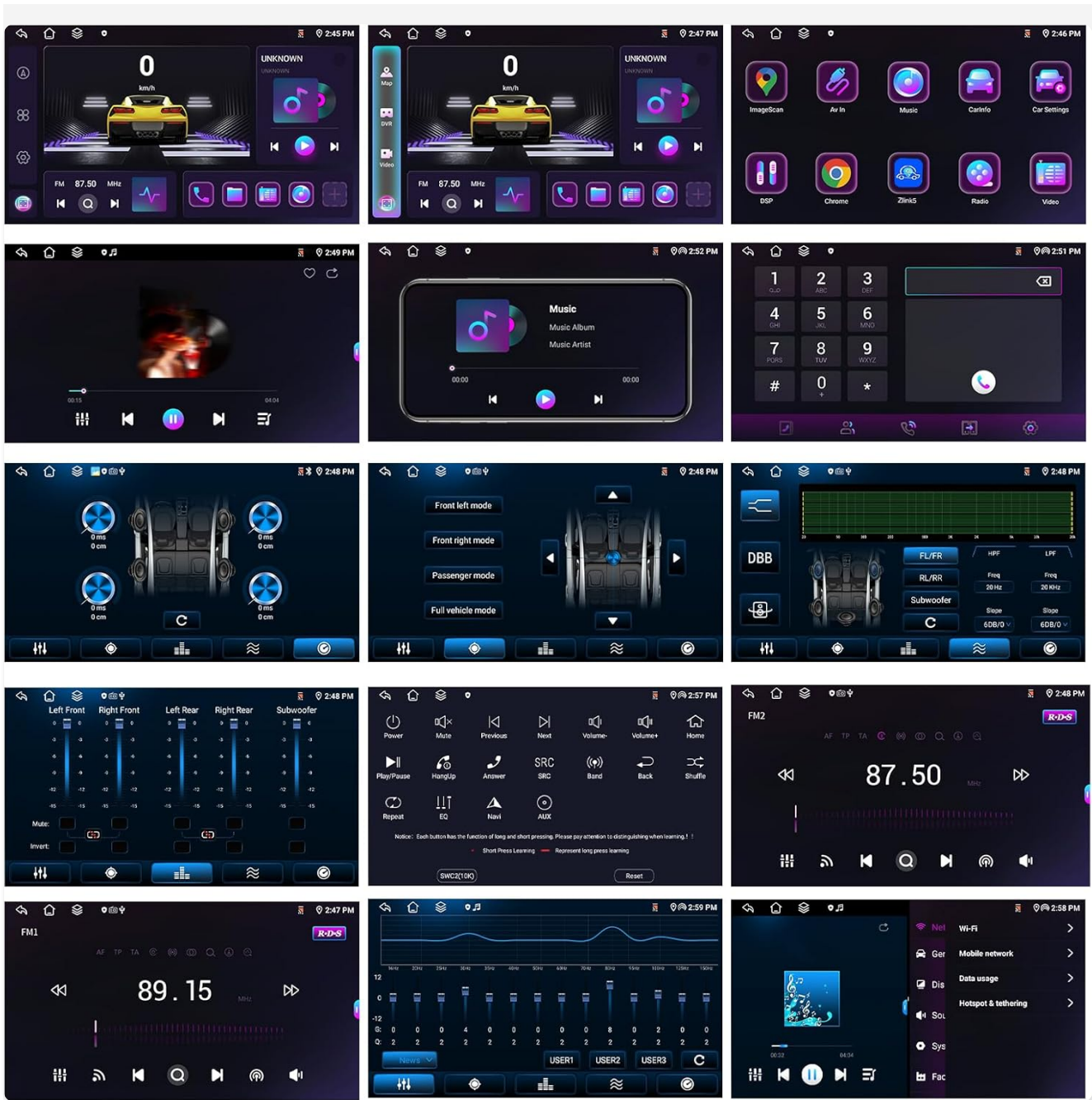
The 9-inch touchscreen provides an intuitive interface for navigating the Android system. Swipe, tap, and pinch to control various functions. The side buttons offer quick access to essential controls like volume, home, and back.

### 5.2 Wireless Carplay & Android Auto

Connect your iPhone or Android smartphone wirelessly via Bluetooth or wired via USB to access Carplay or Android Auto. This allows you to use navigation, make calls, send messages, and play music directly from your phone's interface on the car radio screen.



Visual representation of the Apple Carplay, Android Auto, and Mirror Link interfaces as displayed on the car radio screen, illustrating their connectivity options (Bluetooth/USB).



An image depicting a family enjoying the seamless integration of wireless Carplay and Android Auto in their vehicle, showcasing the convenience and entertainment features of the system.

### 5.3 Navigation (GPS)

The built-in GPS module supports both online and offline navigation. You can download offline maps for areas with limited internet access or use online maps for real-time traffic updates and routing.

Built in 4G full Netcom card slot.  
plug and play , easy access to  
the Internet .



Can connection to WIFI or mobile  
hotspot to access the Internet.



## Fast Internet Speed

You can log in to various websites,  
download and update various  
software online.



The car radio screen showing a split view with GPS navigation on one side and a media player interface on the other, demonstrating multitasking capabilities.

## GPS Navigation

With external GPS Antenna, Supports both online  
and offline GPS Navigation.



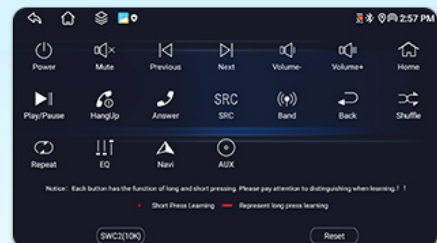
## Bluetooth 5.0

Through BT, we can listen to music or answer hands-free  
calls while navigating, which greatly reduces driving risks.



## Steering Wheel Control

With the steering wheel control, you can easily switch songs,  
channels and adjust volume for a safe and enjoyable drive.



A graphic highlighting the GPS Navigation feature, emphasizing support for both online and offline maps via an external GPS antenna.

## 5.4 Audio & DSP/EQ

The integrated DSP (Digital Sound Processor) chip and EQ (Equalizer) allow for precise audio customization. Adjust frequencies, select various equalization presets (Classical, Flat, Jazz, etc.), and fine-tune sound types to

compensate for original car speaker limitations and achieve high-quality, lossless sound.



Multiple screenshots showcasing the detailed DSP (Digital Sound Processor) and EQ (Equalizer) settings available on the car radio, allowing for comprehensive audio customization.



## Mirror Link

Supports IOs/Android Phones to synchronize mobile screen to the car audio screen.



## FM/AM/RDS Radio

Online music you can transfer the music to the car stereo by FM/AM/RDS to enjoy the original car stereo sound



## AHD 1080P Reverse

When the car is in the reverse gear, it automatically switches to the reverse image, which is easier and safer to reverse.

An image showing the car radio installed in a dashboard, displaying the professional DSP/EQ settings, with a background graphic of a crowd enjoying music, symbolizing enhanced audio experience.

### 5.5 Bluetooth 5.0

Connect your smartphone or other Bluetooth-enabled devices for hands-free calling and audio streaming. The system supports automatic phone book loading for easy access to your contacts.

### 5.6 FM/AM/RDS Radio

Enjoy a wide range of radio stations with clear reception. The RDS (Radio Data System) function provides additional information like station name and song title where available. Online music can also be transmitted to the car stereo via FM.

### 5.7 Steering Wheel Control (SWC)

After connecting your vehicle's steering wheel control wires (Key1 or Key2) to the power harness, you can program the car radio to respond to your existing steering wheel buttons. This allows for convenient control of volume, track skipping, and other functions without taking your hands off the wheel.

### 5.8 Mirror Link

The Mirror Link feature allows you to project your iOS or Android phone screen onto the car radio display via USB cable or Wi-Fi connection. This is useful for apps not natively supported by Carplay or Android Auto.

### 5.9 4G/WiFi Connectivity

The car radio features advanced 4G and WiFi capabilities. Connect to a WiFi hotspot or insert a SIM card into the 4G module for high-speed internet access. This enables online video streaming, web browsing, and app downloads directly on your car stereo.



The car radio screen showing various popular app icons, illustrating the seamless WiFi/4G connection for online content and services.



A graphic detailing the 4G module with its built-in card slot for plug-and-play internet access, alongside information about WiFi connectivity via mobile hotspot, emphasizing fast internet speed for various online activities.

## 6. MAINTENANCE

To ensure the longevity and optimal performance of your Inefala car radio, follow these maintenance guidelines:

- **Cleaning:** Use a soft, dry cloth to clean the screen and exterior. For stubborn smudges, slightly dampen the cloth with water or a screen-safe cleaner. Avoid abrasive materials or harsh chemicals.
- **Temperature:** Avoid exposing the unit to extreme temperatures, both hot and cold, for extended periods.
- **Software Updates:** Periodically check for software updates through the system settings to ensure you have the latest features and bug fixes.
- **Power Management:** Ensure proper power supply to prevent damage. Avoid frequent power interruptions.

## 7. TROUBLESHOOTING

If you encounter any issues with your Inefala car radio, please refer to the following common troubleshooting steps:

Problem	Possible Cause	Solution
No Power	Incorrect wiring; Blown fuse; Vehicle battery issue.	Check power cable connections; Inspect vehicle's fuse box; Verify car battery voltage.
No Sound	Speaker wiring issue; Volume too low; Mute activated; Incorrect audio output settings.	Check speaker connections; Increase volume; Deactivate mute; Adjust audio settings in DSP/EQ.
GPS Not Working	GPS antenna not connected or faulty; No satellite signal; Map data corrupted.	Ensure GPS antenna is securely connected and placed in a clear area; Move to an open area for better signal; Reinstall or update map data.
Carplay/Android Auto Disconnects	Loose USB cable; Bluetooth interference; Software glitch.	Ensure USB cable is securely connected; Re-pair Bluetooth device; Restart the car radio and phone.
SIM Card Not Activated	Incorrect SIM card type; SIM card not properly inserted; Software setting.	Ensure SIM card is compatible and correctly inserted; Follow SIM card activation steps in Section 4.2; Restart the device.

## 8. SPECIFICATIONS

Feature	Detail
Product Dimensions	11.42 x 7.09 x 3.27 inches
Item Weight	2.53 pounds
Screen Size	9 Inches (Visible screen diagonal: 9" / 23 cm)
Resolution	720 x 1280
Operating System	Android 15 (New Android 13 Operating System mentioned in A+ content, using 15 from title)
Processor	8-Core Processor
RAM + ROM	4GB RAM + 64GB ROM

Feature	Detail
Connectivity Technology	Bluetooth 5.0, USB, Wi-Fi, 4G
Audio Output Mode	Stereo
DSP Chip	AK7604
Power Output	4*50W
Working Temperature	-40°C~+85°C
Working Voltage	9V 16V
Map Type	Worldwide (GPS/BDS/Glons)
Manufacturer	Inefala
Date First Available	February 18, 2024

## 9. WARRANTY & SUPPORT

Inefala is committed to providing high-quality products and excellent customer service. Your Inefala car radio comes with the following:

- **24 Months Quality Assurance:** We are responsible for handling all quality issues within 24 months from the date of purchase.
- **30 Days Free Return:** Enjoy a 30-day free return policy.
- **Online Reply Within 24 Hours:** Our customer support team aims to respond to inquiries within 24 hours.

### Technical Support

For any technical assistance or questions regarding your product, please do not hesitate to contact us directly. You can reach our 24/7 technical support team via email:

**Email: [inefalatech@163.com](mailto:inefalatech@163.com)**

## 24/7 Technical Support

How to quickly get us to help you, in just two steps:

### Step 1

Ships from	Amazon
Sold by	<a href="#">Inefala-US</a>
Returns	30-day refund/replacement
Payment	Secure transaction

**Click "Inefala-US"**

### Step 2

#### About Seller

Welcome to Inefala-US store!

We sell electronic products related to vehicles, such as car radios, portable displays, backup camera kits, dash cams, and more.

We are responsible for handling all quality issues within 24 months from the date of purchase.

Please be reminded to use the product according to the instructions provided. If you have any other questions, we would be happy to assist you. Don't hesitate to contact us directly at [inefalatech@163.com](mailto:inefalatech@163.com)

**Send us an email**

An image detailing the steps to contact technical support, including finding the seller on Amazon and sending an email to [inefalatech@163.com](mailto:inefalatech@163.com) for assistance.