

Manuals+

[Q & A](#) | [Deep Search](#) | [Upload](#)

manuals.plus /

› [PTHTECHUS](#) /

› [PTHTECHUS 4G Kids Smart Watch LT49 User Manual](#)

PTHTECHUS LT49

PTHTECHUS 4G Kids Smart Watch LT49 User Manual

Model: LT49

1. INTRODUCTION

This manual provides comprehensive instructions for the PTHTECHUS 4G Kids Smart Watch, model LT49. It covers product setup, operation, maintenance, and troubleshooting to ensure optimal use of the device. Please read this manual thoroughly before using the watch.

2. WHAT'S IN THE BOX

- PTHTECHUS 4G Kids Smart Watch (Model LT49)
- Charging Cable
- User Manual
- Watch Band
- SpeedTalk Mobile SIM Kit (includes SIM card)

3. PRODUCT OVERVIEW

Familiarize yourself with the physical components of your PTHTECHUS 4G Kids Smart Watch.

4G Watch Is The Best Gift For Boys And Girls Aged 3-12



Image: PTHTECHUS 4G Kids Smart Watch LT49 showing its HD Camera, SIM card slot, Mental Watch Case, Colorful Soft Band, SOS Button, and Power Button.

- **HD Camera:** Located at the top of the watch face, used for taking photos and videos.
- **SIM Card Slot:** Located on the side, for inserting the Nano SIM card.
- **SOS Button:** A dedicated button for emergency calls.
- **Power Button:** Used to power on/off the device and navigate.
- **Touch Screen:** 1.54-inch display for interaction.

4. SETUP INSTRUCTIONS

4.1. SIM Card Installation

The PTHTECHUS 4G Kids Smart Watch requires a Nano SIM card for 4G network functionality, including calling. A SpeedTalk Mobile SIM kit is included.



Image: Illustration of a Nano SIM card and its correct orientation for insertion into the watch's SIM card slot, alongside information about SpeedTalk Mobile service.

1. Ensure the watch is powered off.
2. Locate the SIM card slot on the side of the watch.
3. Carefully insert the Nano SIM card into the slot with the gold contacts facing up and the notched corner aligned correctly.
4. Gently push until the SIM card clicks into place.

4.2. Initial Charging and Power On

1. Connect the charging cable to the watch's charging port and a compatible USB power adapter.
2. Allow the watch to charge fully before first use. The battery indicator will show charging status.
3. To power on, press and hold the Power Button until the screen illuminates.

4.3. Network Activation (SpeedTalk Mobile)

The included SpeedTalk Mobile SIM card requires activation to enable calling and data features. Visit the SpeedTalk Mobile website to activate the service. Support is available 7 days a week.

5. OPERATING INSTRUCTIONS

5.1. Basic Navigation

The watch features an HD touch screen for navigation. Swipe left/right or up/down to access different applications and settings. Tap icons to select.

5.2. Making and Receiving Calls

With an activated 4G SIM card, the watch supports two-way calling.

4G Two-Way Calling

Simply insert your 4G Nano's SIM card to receive and make calls to stay in touch with your kids anytime.



SOS Emergency Call



Press and hold the SOS button for 3-5 seconds to call emergency contacts to ensure your child's safety.

Image: The PTHTECHUS 4G Kids Smart Watch displaying an incoming call, illustrating its two-way calling capability.

- **Making a Call:** Navigate to the 'Phone' application, select a contact from the pre-set list, and initiate the call.
- **Receiving a Call:** When a call comes in, tap the green answer icon on the screen.

5.3. SOS Emergency Call

In an emergency, the SOS function allows the child to quickly contact pre-set numbers.

- **Activate SOS:** Press and hold the SOS button for 3-5 seconds.
- The watch will automatically dial up to 3 pre-set emergency contacts in a loop until one answers.
- An emergency text message will also be sent to these contacts.

5.4. Camera Usage

The built-in camera allows for capturing photos and videos.



Image: A family portrait displayed on the watch screen, demonstrating the watch's camera function and ability to preserve moments.

- Navigate to the 'Camera' application.
- Tap the screen to take a photo or start/stop video recording.
- Photos and videos are saved to the watch's internal memory.

5.5. Music Playback

The watch supports MP3 music playback.

- Transfer MP3 files to the watch's storage via USB connection to a computer.
- Access the 'Music' application to browse and play stored audio files.

5.6. Games

The watch includes 8 pre-installed puzzle games designed to engage children and develop logical thinking.

- Access games through the 'Games' application.
- **School Mode:** To prevent distractions during study times, activate 'School Mode' in the settings. This temporarily disables game functions.

5.7. Pedometer

The built-in pedometer tracks daily steps.

- Access the 'Pedometer' application to view step count.

5.8. Alarm Clock and Habit Tracker

Set up to 13 different alarm clock modes to help establish daily routines.

Habit Tracker

13 alarm clock modes to help your child develop good habits.



Image: A visual representation of 13 alarm clock modes, including 'Get Up', 'Brush Your Teeth', 'Breakfast', 'Walk the Dog', 'Go to School', 'Lunch', 'Sports', 'Homework', 'Dinner', 'Housework', 'Reading', and 'Go to Bed', displayed around the watch face.

- Navigate to the 'Alarm' or 'Habit' application to set and manage alarms.

5.9. Learning Features

The watch includes learning cards and audio stories.

Multiple wallpapers

Directly click on the screen to switch
back and forth between wallpapers

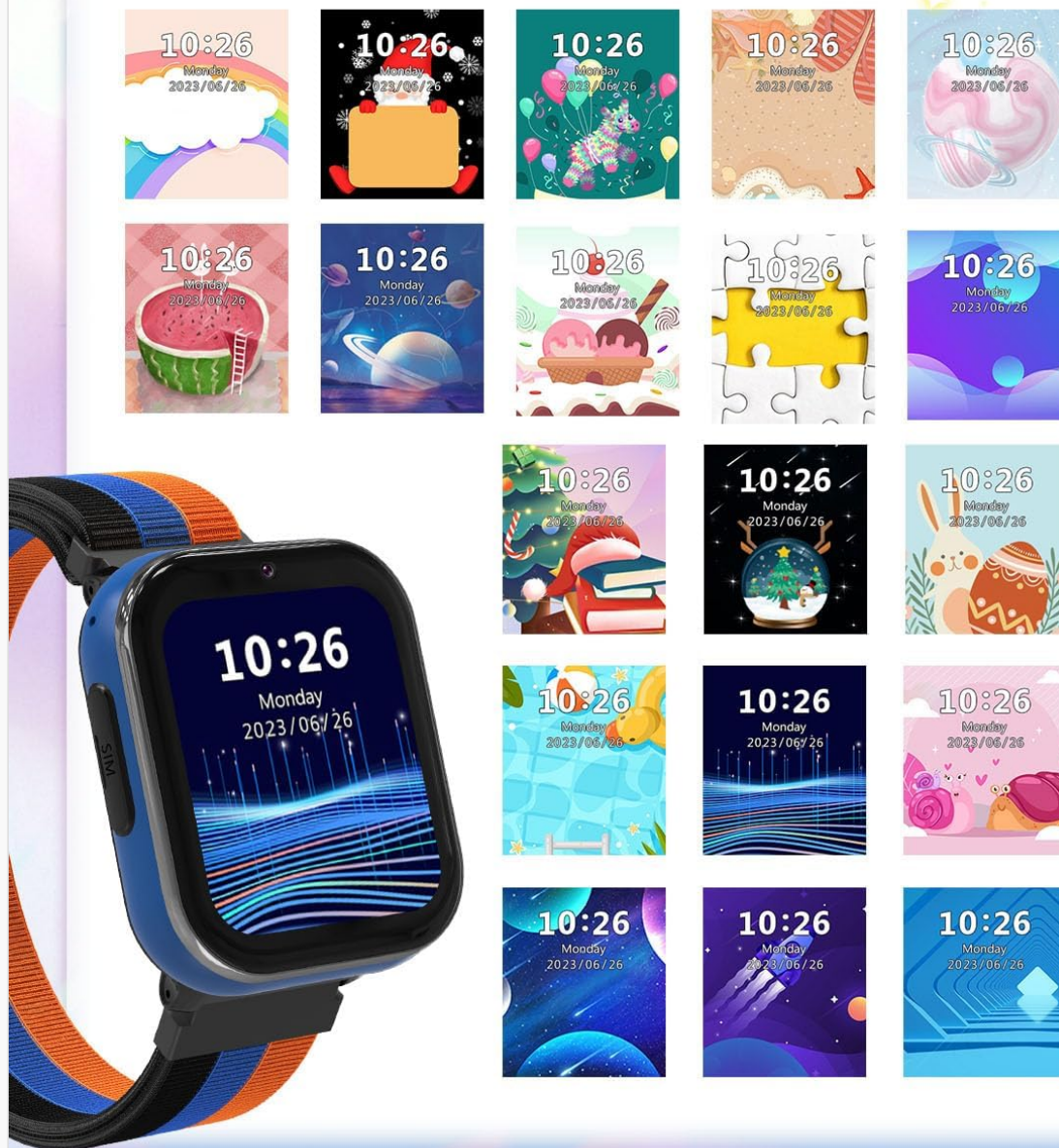


Image: Display of various learning cards (e.g., animals, plants) and icons representing audio stories, designed to aid learning.

- Access 'Learning Cards' for educational content.
- Access 'Audio Stories' for pre-loaded narratives.

5.10. Other Features

- **Calculator:** Basic arithmetic functions.
- **Timer & Stopwatch:** For timing activities.
- **Recording:** Voice recording function.
- **Wallpaper:** Customize the watch face with multiple wallpaper options.

Fun learning features

Bedtime stories and learning cards give parents more peace of mind.

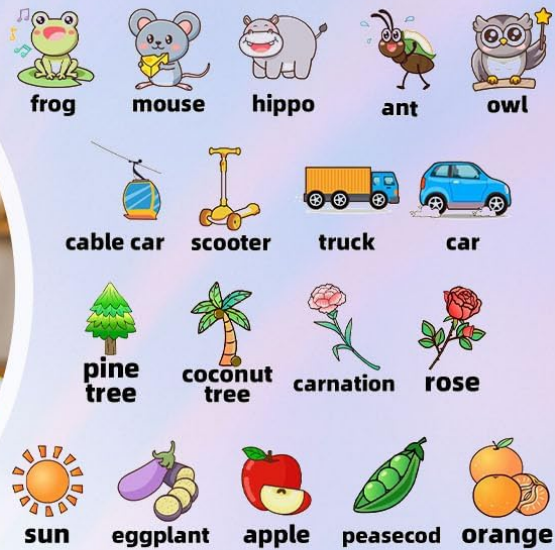
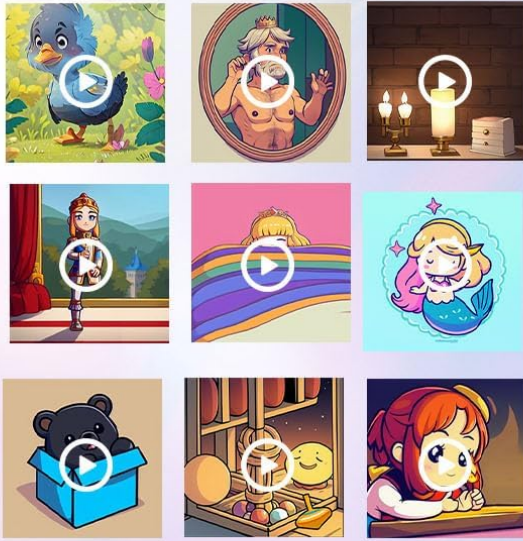


Image: A grid of diverse wallpaper designs available for customization on the watch screen.

6. MAINTENANCE

6.1. Charging

- Use only the provided charging cable.
- Charge the watch regularly to maintain battery health.
- Avoid overcharging or completely draining the battery frequently.

6.2. Cleaning

- Wipe the watch screen and body with a soft, dry cloth.
- Avoid using harsh chemicals or abrasive materials.

6.3. Battery Care

- The watch is equipped with a 700mAh Lithium Metal battery.
- Store the watch in a cool, dry place when not in use for extended periods.
- If the watch will not be used for a long time, charge it to about 50% before storing.

7. TROUBLESHOOTING

- **Watch not powering on:** Ensure the watch is fully charged. Press and hold the power button for at least 10 seconds.
- **Cannot make/receive calls:** Verify that the SIM card is correctly inserted and activated with a 4G plan. Check network signal strength.
- **Screen unresponsive:** Restart the watch. If the issue persists, ensure the screen is clean and dry.
- **Poor call quality:** Check network signal. Ensure the microphone and speaker are not obstructed.
- **Battery draining quickly:** Reduce screen brightness, close unused applications, and ensure no background processes are consuming excessive power.

8. SPECIFICATIONS

Feature	Specification
Model Name	LT49
Screen Size	1.54 Inches
Battery Capacity	700 Milliamp Hours (Lithium Metal)
Memory Storage Capacity	3.3 GB
Connectivity Technology	USB
Special Features	Alarm Clock, Camera, Music Player, Phone Call, SOS Button
GPS	No GPS
Item Weight	60 Grams (2.12 ounces)
Package Dimensions	3.94 x 2.36 x 1.57 inches

9. WARRANTY AND SUPPORT

PTHTECHUS is committed to providing quality products. For any questions or issues regarding your PTHTECHUS 4G Kids Smart Watch LT49, please contact our customer support. We are available to assist you with product inquiries and troubleshooting.