

vretti TP2-Y

vretti Mini Pocket Printer User Manual

Model: TP2-Y

INTRODUCTION

The vretti Mini Pocket Printer is a compact, portable thermal printer designed for convenient, inkless printing. It connects via Bluetooth to your iPhone or Android device, allowing you to print photos, notes, labels, and various creative content. Its thermal printing technology eliminates the need for ink cartridges, offering a cost-effective and mess-free printing experience. This manual provides detailed instructions to help you get started and make the most of your new printer.

PACKAGE CONTENTS

Please verify that all items listed below are included in your package:

- 1 x vretti Mini Thermal Pocket Printer
- 1 x USB Charging Cable
- 1 x 57*30mm Thermal Paper Roll
- 1 x User Manual

Package List



1.Packaging Box 2.manual 3.Data Cable
4.printer 5.Thermal paper × 1 roll

Image: The vretti Mini Pocket Printer and its included accessories.

SETUP GUIDE

1. Charging the Printer

Before first use, fully charge the printer. Connect the provided USB cable to the printer's charging port and a compatible USB power adapter (not included). The indicator light will show charging status and turn off when fully

charged.

2. Installing the Paper Roll

1. Gently open the printer cover.
2. Insert the thermal paper roll into the paper compartment, ensuring the printing side of the paper faces the print head.
3. Pull a small amount of paper out of the slot and close the cover firmly until it clicks into place.

3. App Installation

The vretti Mini Pocket Printer operates with the **Xlife Pro** application. Download the app from your device's app store:

[Download on Google Play \(for Android\)](#)

[Download on the App Store \(for iOS\)](#)

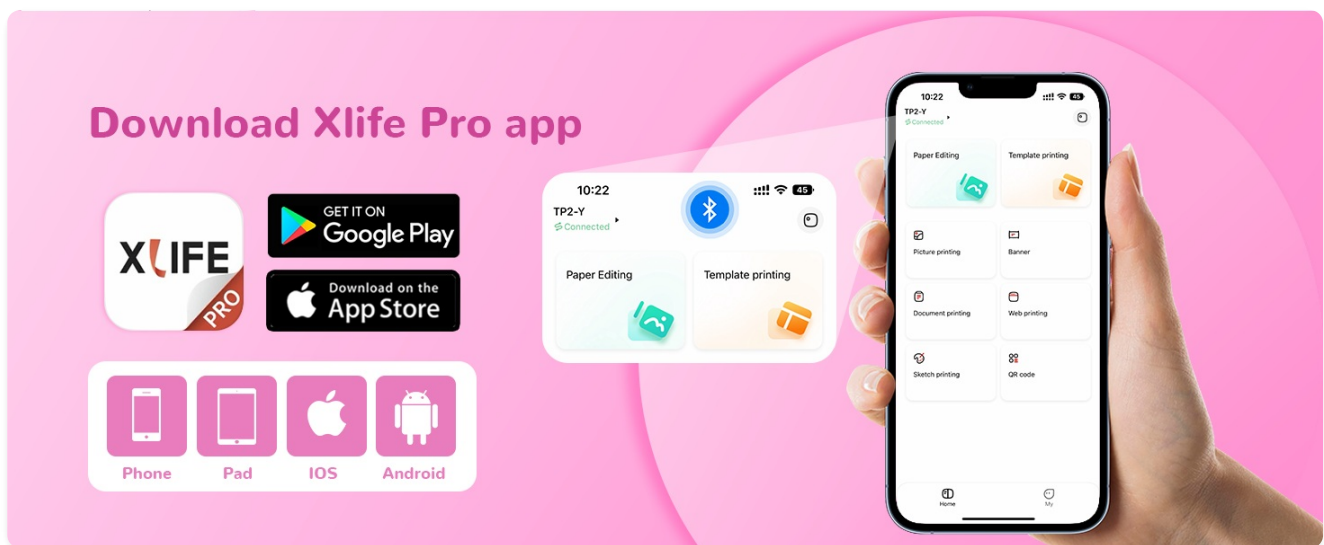


Image: Xlife Pro App download options.

4. Bluetooth Connection

1. Ensure Bluetooth is enabled on your smartphone.
2. Turn on the printer by pressing and holding the power button.
3. Open the **Xlife Pro** app.
4. Within the app, navigate to the connection interface (often indicated by a Bluetooth icon or 'Connect Device').
5. Select 'TP2-Y' from the list of available devices to pair. *Note: Do not attempt to pair the printer directly from your phone's Bluetooth settings; always connect through the Xlife Pro app.*



Image: Printer power, paper installation, and app connection steps.



Image: Correct Bluetooth connection procedure through the Xlife Pro app.

OPERATING INSTRUCTIONS

Basic Printing Functions

Once connected, the Xlife Pro app provides various options for printing:

- **Photo Printing:** Select images from your gallery to print. The printer produces black and white thermal prints.
- **Text & Memo Printing:** Type or paste text directly into the app for quick notes, lists, or messages.
- **Label & Sticker Creation:** Utilize pre-designed templates or create custom labels and stickers.
- **DIY & Graffiti:** Print outlines of cartoons or designs for coloring, or create your own freehand drawings.



Image: Examples of various printing applications.

HD Black and White Printout

Compatible with Many Kinds of Paper



Support 57*30mm paper roll



Colorful



Color sticker paper



Transparent



Transparent paper

Image: HD black and white printouts on various paper types.

DIY Cartoons By Colorful Pens



Image: DIY cartoons for coloring.

Use Scissors to Make Different Labels/Paper



Image: Creating custom labels from printed output.

Xlife Pro App Features

The Xlife Pro app offers a rich set of features to enhance your printing experience:

- **Creative Templates:** Access a wide range of pre-designed templates for notes, lists, journals, and more.
- **Editing Tools:** Adjust brightness, contrast, and other settings for your prints.
- **Document Printing:** Print text documents directly from your phone.
- **QR Code Generation:** Create and print QR codes.

Multi-Template APP



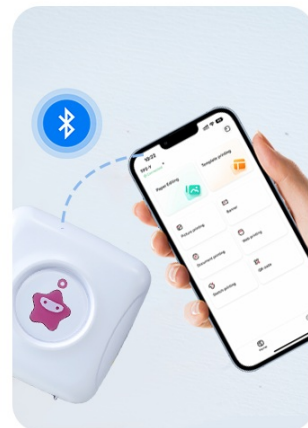
Image: Multi-template options within the Xlife Pro app.



1 Turn on the Printer,
Press the Power Button



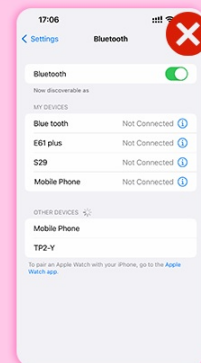
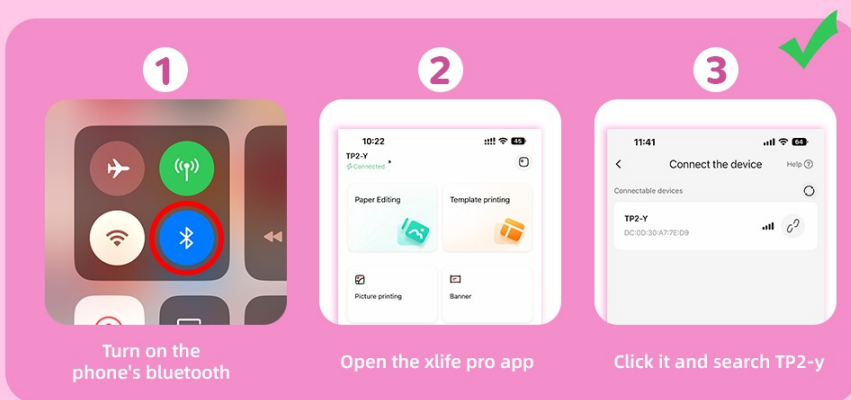
2 Install the Paper Roll



4 Connect Bluetooth in
the APP

Image: Freely DIY your stickers using app templates.

How to connect Bluetooth



**Wrong: Please don't in the setting
and the bluetooth list find the model**

Image: Customize your own printing for notebooks and crafts.

MAINTENANCE

Cleaning the Printer

To ensure optimal print quality and longevity of your printer:

- Turn off the printer before cleaning.
- Use a soft, lint-free cloth slightly dampened with water or rubbing alcohol to wipe the exterior of the printer.
- For the print head, use a cotton swab lightly dampened with rubbing alcohol. Gently wipe the print head surface. Allow it to dry completely before closing the cover and using the printer.
- Do not use harsh chemicals or abrasive materials, as they may damage the printer's surface or internal components.

Paper Storage

Thermal paper is sensitive to heat and light. Store unused thermal paper rolls in a cool, dry place away from direct sunlight and high temperatures to prevent fading or damage to the paper's coating.

TROUBLESHOOTING

Problem	Possible Cause	Solution
Printer does not turn on	Low battery; Power button not pressed correctly	Charge the printer fully; Press and hold the power button for a few seconds.
No print or faint print	Paper installed incorrectly; Low battery; Print head dirty; App settings (brightness)	Reinstall paper with printing side facing up; Charge printer; Clean print head; Adjust print density in the Xlife Pro app.
Cannot connect via Bluetooth	Bluetooth not enabled; Incorrect pairing method; App issue	Ensure Bluetooth is on; Connect via the Xlife Pro app, not phone settings; Restart app/printer/phone.
Printer overheats	Continuous printing for extended periods	Allow the printer to cool down for a few minutes before resuming printing.
Pixelated or very dark print	Image resolution; App print settings	Use higher resolution images if possible; Adjust print settings (e.g., contrast, darkness) within the Xlife Pro app.

SPECIFICATIONS

Feature	Detail
Model Name	TP2-Y
Product Dimensions	3.3"D x 3.3"W x 1.6"H
Item Weight	6.6 ounces (188 Grams)
Printing Technology	Thermal
Connectivity Technology	Bluetooth
Controller Type	Android, iOS
Maximum Media Size	2.2 inch (57mm paper roll)
Maximum Black and White Print Resolution	203 dpi
Print Media	Thermal Paper (plain)
Battery Type	1 Lithium Ion battery (included)

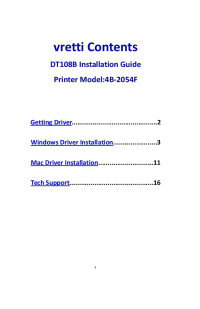
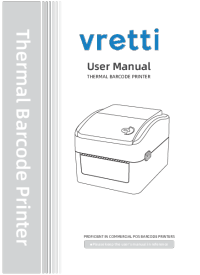

WARRANTY AND SUPPORT

For information regarding product warranty, returns, or technical support, please refer to the documentation included with your purchase or visit the official vretti brand store or website. Specific warranty terms may vary by region and retailer.

You can find more information and support resources at the [vretti Amazon Store](#).

© 2024 vretti. All rights reserved.

Related Documents

 <p>vretti Contents DT108B Installation Guide Printer Model: 4B-2054F</p> <p>Getting Driver 2 Windows Driver Installation 3 Mac Driver Installation 11 Tech Support 16</p>	<p>vretti DT108B Installation Guide: Setup for Windows and Mac</p> <p>Comprehensive installation guide for the vretti DT108B label printer. Learn how to install drivers for Windows and macOS, connect your printer, and perform a test print. Includes troubleshooting tips and support contact information.</p>
 <p>Thermal Barcode Printer</p> <p>vretti User Manual THERMAL BARCODE PRINTER</p>	<p>Vretti 420B Thermal Barcode Printer User Manual</p> <p>User manual for the Vretti 420B Thermal Barcode Printer, covering installation, driver setup for Windows and Mac, browser printing, button functions, LED status, specifications, and troubleshooting.</p>
 <p>vretti</p> <p>420B USB+WIFI User Manual</p>	<p>Vretti 420B USB+WIFI User Manual</p> <p>User manual for the Vretti 420B USB+WIFI barcode printer, covering installation, setup, troubleshooting, and usage for various operating systems including Windows, Mac, Linux, iOS, Android, and ChromeOS.</p>