

VINABTY Universal Replacement Remote for METZ MTC61xx, MUC5000, MUB5010 Series

VINABTY Replacement Remote Control for METZ LED TVs - User Manual

Model: Universal Replacement Remote for METZ MTC61xx, MUC5000, MUB5010 Series

1. INTRODUCTION

This manual provides instructions for the VINABTY Replacement Remote Control, designed to function as a direct replacement for original remote controls of various METZ LED TV models. This remote requires no programming and is ready for use upon battery installation.

Compatible METZ TV Models:

- **MTC61* Series:** 32MTC6100Y, 32MTC6110Z, 32MTC6110Y, 40MTC6110Z, 32MTC6120Z, 40MTC6120Z
- **MUC5000* Series:** 65MUC5000, 55MUC5000, 50MUC5000, 43MUC5000
- **MUB5010* Series:** 43MUB5010, 55MUB5010

2. PACKAGE CONTENTS

The package includes:

- 1 x VINABTY Replacement Remote Control

Note: Batteries are not included and must be purchased separately.

3. SETUP

3.1 Installing Batteries

1. Locate the battery compartment on the back of the remote control.
2. Slide the battery cover downwards or press the latch (if present) to open the compartment.
3. Insert two (2) AAA batteries, ensuring the positive (+) and negative (-) terminals align correctly with the markings inside the compartment.
4. Slide the battery cover back into place until it clicks securely.

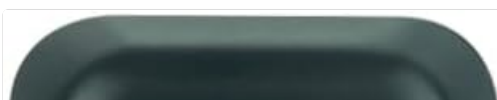






Figure 1: Battery compartment with AAA battery insertion points.

3.2 Initial Use

Once batteries are correctly installed, the remote control is ready for immediate use with your compatible METZ LED TV. No additional programming or pairing is required.

4. OPERATING INSTRUCTIONS

4.1 Remote Control Layout and Button Functions

Familiarize yourself with the buttons on your VINABTY replacement remote control. The layout is designed to mirror the functionality of your original METZ TV remote.





Figure 2: Front view of the remote control with button layout.

Power Button (Red): Turns the TV on or off.

Input/Source Button: Selects the input source (e.g., HDMI 1, AV, USB).

Number Buttons (0-9): Directly select TV channels or input numbers.

LIST: Displays a list of channels or available content.

SOURCE: Cycles through available input sources.

HOME: Accesses the TV's main home screen or smart TV interface.

MENU: Opens the TV's main menu for settings and options.

Navigation Buttons (Up, Down, Left, Right): Navigates through menus and options.

OK Button: Confirms selections or enters sub-menus.

BACK: Returns to the previous screen or menu.

EXIT: Closes the current menu or application.

App Shortcut Buttons (NETFLIX, prm video, YuTbe): Direct access to popular streaming applications.

VOL +/-: Adjusts the volume level.

P +/- (Channel Up/Down): Changes TV channels.

TEXT: Activates or deactivates Teletext.

GUIDE: Displays the electronic program guide (EPG).

INDEX: Accesses index functions in Teletext or other menus.

HOLD: Holds a Teletext page.

REVEAL: Reveals hidden text in Teletext.

SUBTITLE: Toggles subtitles on or off.

AD (Audio Description): Activates or deactivates audio description.

Media Control Buttons (Play/Pause, Rewind, Fast Forward): Controls media playback.

Color Buttons (Red, Green, Yellow, Blue): Used for specific functions within menus or applications, as indicated on the TV screen.

5. MAINTENANCE

5.1 Cleaning

To clean the remote control, use a soft, dry cloth. Do not use liquid cleaners, sprays, or abrasive materials, as these may damage the remote's surface or internal components.

5.2 Battery Replacement

Replace batteries when the remote's response becomes sluggish or stops working. Always replace both batteries at the same time with new ones of the same type (AAA). Do not mix old and new batteries or different types of batteries.

5.3 Storage

If the remote control will not be used for an extended period, remove the batteries to prevent leakage and potential damage to the device.

6. TROUBLESHOOTING

- **Remote not responding:**
 - Ensure the batteries are inserted correctly with the correct polarity.
 - Replace the batteries with fresh AAA batteries.
 - Ensure there is a clear line of sight between the remote control and the TV's infrared sensor. Remove any obstructions.
 - Confirm the TV is powered on.
- **Buttons not working:**
 - Check if other buttons on the remote are functioning. If only specific buttons are not working, there might be an issue with the remote itself.
 - Clean the remote control, especially around the non-functioning buttons, to remove any dirt or debris.
- **Short operating range:**
 - Replace the batteries with new ones. Low battery power can reduce the remote's effective range.
 - Ensure no strong light sources (like direct sunlight or bright fluorescent lights) are interfering with the TV's IR sensor.

7. SPECIFICATIONS

Brand: VINABTY

Model: Universal Replacement Remote

Dimensions (L x W x H): 21.3 cm x 4.4 cm x 2.6 cm

Weight: Approximately 100 grams (without batteries)

Maximum Operating Range: Up to 10 meters (33 feet)

Power Supply: 2 x AAA batteries (not included)






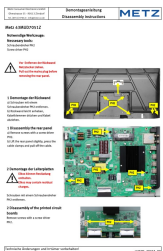
Figure 3: Remote control dimensions.

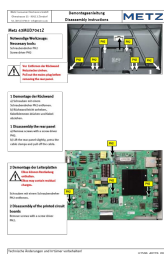
8. WARRANTY AND SUPPORT

As a replacement part, this remote control typically comes with a limited warranty from the seller. Please refer to your purchase documentation or contact the seller directly for specific warranty terms and support inquiries.

© 2024 VINABTY. All rights reserved.

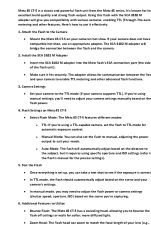
Related Documents - Universal Replacement Remote for METZ MTC61xx, MUC5000, MUB5010 Series

	<p>Metz 32MTC6100Y Disassembly Instructions - Technical Guide</p> <p>Detailed disassembly instructions for the Metz 32MTC6100Y television. Learn how to safely remove the rear panel and circuit boards with step-by-step guidance and necessary tool information.</p>
	<p>Metz mecablitz: Complete Photo Electronics Catalogue 2010/2011</p> <p>Explore the Metz mecablitz range of professional flash units for analog and digital cameras. This catalogue covers system, SCA, automatic, and slave/servo flash units, highlighting quality, innovation, and technical perfection from Metz.</p>
	<p>Vodafone Marktübersicht CI+ geeigneter Empfangsgeräte</p> <p>Finden Sie eine umfassende Liste von CI+ kompatiblen Fernsehgeräten führender Hersteller wie LG, Samsung, Sony, Philips und mehr. Dieser Leitfaden von Vodafone hilft Ihnen bei der Auswahl des richtigen Fernsehers für Ihr CI+ Modul und gewährleistet eine nahtlose digitale Kabelverbindung.</p>
	<p>Metz 43MUD7051Z Disassembly Instructions</p> <p>Detailed disassembly instructions for the Metz 43MUD7051Z television. This guide covers the necessary tools and steps for removing the rear panel and printed circuit boards, including a safety warning about residual charges in capacitors.</p>



Metz 43MUD7041Z Disassembly Instructions

Step-by-step guide for disassembling the Metz 43MUD7041Z television, including necessary tools and safety precautions for safe removal of the rear panel and circuit boards.



Metz 45 CT-5 Flash Guide: Setup and Usage with SCA 3102 M Adapter

Learn how to effectively use the Metz 45 CT-5 flash unit with the SCA 3102 M adapter for TTL metering and advanced flash functions. This guide covers setup, camera and flash settings, and tips for better results.