

## Manuals+

[Q & A](#) | [Deep Search](#) | [Upload](#)

manuals.plus /

- › [Allibert](#) /
- › [Keter California Garden Sofa Instruction Manual](#)

## Allibert California Sofa

# Keter California Garden Sofa

## INSTRUCTION MANUAL

### 1. PRODUCT OVERVIEW

The Keter California Garden Sofa is an elegant and comfortable two-seat outdoor sofa designed to enhance your garden or patio space. It features a linear design with a signature braided finish, providing a modern yet inviting aesthetic. This sofa is equipped with comfortable seat and back cushions for optimal relaxation.



Image 1.1: The Keter California Garden Sofa, showcasing its two-seat design and included cushions.

### Key Features:

- **Elegant Design:** Linear and elegant design with a braided finish, suitable for modern outdoor spaces.
- **Comfortable Seating:** Includes comfortable seat and back cushions for enhanced relaxation.

- **Durable Construction:** Made from strong, UV-resistant materials designed for long service life in outdoor environments.
- **Easy Maintenance:** Cushions are completely removable and washable for convenient care.

## 2. SAFETY INFORMATION

---

Please read and understand all safety warnings before assembly and use of the product.

- **Outdoor Use:** This product is designed for outdoor use.
- **Heat Exposure:** Keep the sofa away from excessive heat sources to prevent material damage.
- **Supervision:** Always supervise children and pets around the sofa to avoid pinching hazards or other injuries.
- **Stable Surface:** Ensure the sofa is placed on a flat, stable surface to prevent tipping.

## 3. SETUP AND ASSEMBLY

---

The Keter California Garden Sofa requires assembly. Follow these general guidelines for a smooth setup process.

### Tools Required:

- Screw Driver (recommended)

### Recommended Personnel:

It is recommended that **2 people** assemble this product.

### Assembly Steps (General):

1. **Unpack Components:** Carefully unpack all parts from the packaging. Verify that all components listed in the product's assembly guide (not provided here, refer to included manual) are present and undamaged.
2. **Identify Parts:** Familiarize yourself with the different parts of the sofa, such as side panels, backrest, seat base, and legs.
3. **Assemble Frame:** Begin by connecting the main frame components according to the specific instructions provided with your product. Ensure all connections are secure.
4. **Attach Legs:** Securely attach the sofa legs to the base.
5. **Place Cushions:** Once the frame is fully assembled and stable, place the seat and back cushions onto the sofa.
6. **Final Check:** Before use, gently shake the sofa to ensure all connections are tight and the structure is stable.

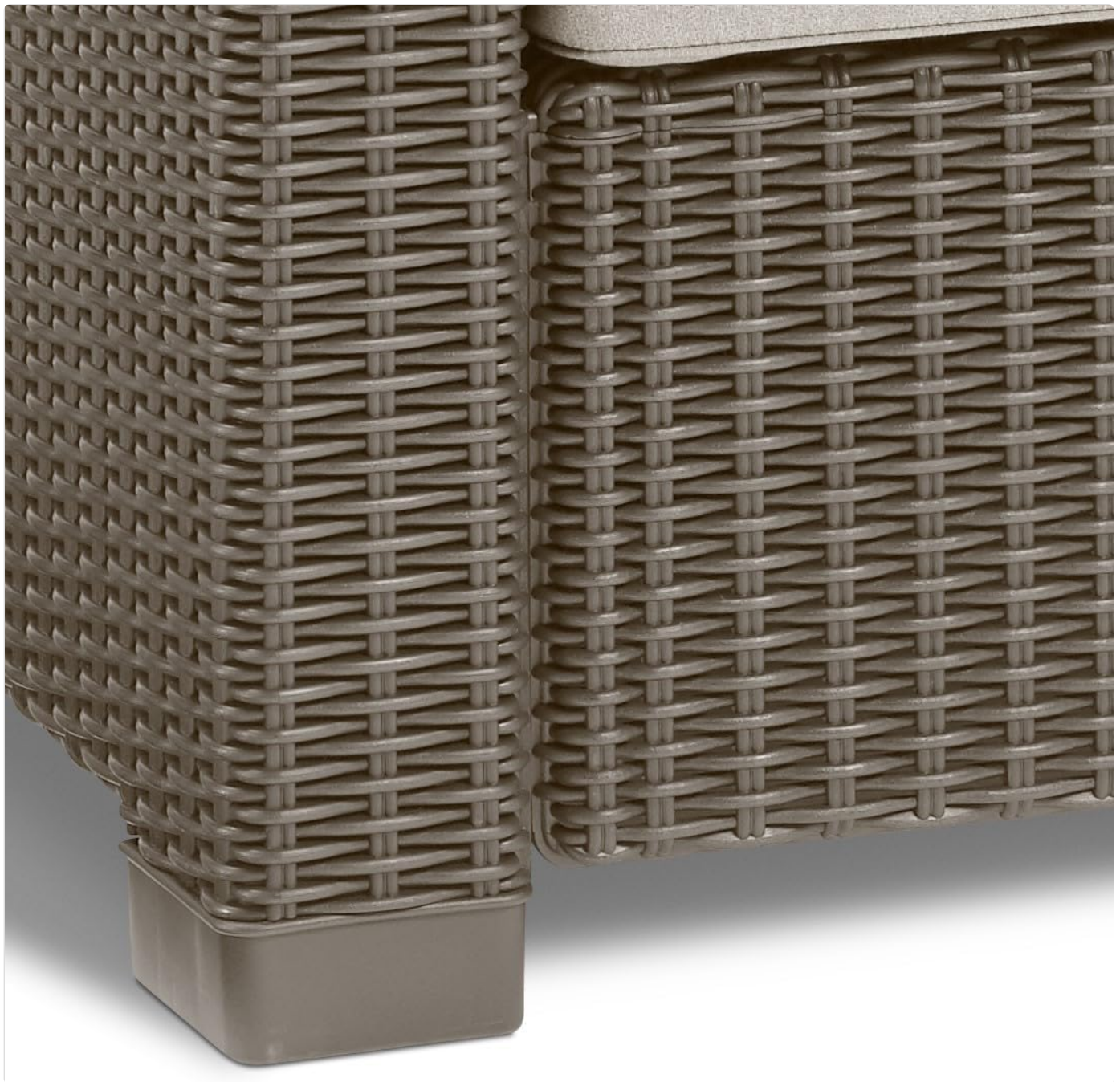


Image 3.1: Detail of the sofa's leg and braided plastic material, illustrating the robust construction.

## 4. OPERATING AND USAGE

---

The Keter California Garden Sofa is designed for comfortable outdoor seating.

- **Intended Use:** This sofa is intended for seating purposes in outdoor environments such as gardens, patios, and balconies. It can also be used in covered verandas.
- **Seating Capacity:** The sofa is designed to comfortably seat 2 individuals.
- **Comfort:** The included foam-filled seat and back cushions provide a comfortable seating experience.





Image 4.1: The California Sofa positioned on an outdoor patio, demonstrating its suitability for garden settings.

## 5. MAINTENANCE AND CARE

---

Proper maintenance will ensure the longevity and appearance of your Keter California Garden Sofa.

- **Cleaning the Frame:** Clean the plastic frame with a damp cloth. For stubborn dirt, a mild soap solution can be used, followed by rinsing with clean water and drying thoroughly.
- **Cushion Care:** The seat and back cushions are completely removable and washable. Refer to the care label on the cushions for specific washing instructions. Ensure cushions are fully dry before re-placing them on the sofa or storing them.
- **UV Resistance:** The materials are treated to resist UV rays, which helps prevent fading and degradation from sun exposure.
- **Winter Storage:** During prolonged periods of non-use, especially in harsh winter conditions, it is recommended to cover the sofa with a weather-resistant cover or store it indoors to protect it from extreme elements and extend its lifespan.



Image 5.1: Close-up view of the sofa's cushion and the intricate braided texture of the armrest, highlighting material quality.

## 6. TROUBLESHOOTING

---

This section addresses common concerns you might encounter with your garden sofa.

- **Sofa Feels Unstable:** Ensure all assembly screws and connectors are tightened securely. Check that the sofa is placed on a flat, even surface. Uneven ground can cause instability.
- **Cushions Appear Flat:** Over time, foam cushions may compress. Fluffing them regularly can help maintain their shape. If significant compression occurs, consider replacing the foam inserts.
- **Fading/Discoloration:** While the material is UV-resistant, prolonged exposure to intense sunlight over many years can still cause some fading. Regular cleaning and covering the sofa when not in use can minimize this.
- **Difficulty Cleaning Stains:** For tough stains on the frame, use a soft brush with mild detergent and water. For cushions, follow the washing instructions on the care label. Pre-treating stains before washing can be effective.

## 7. SPECIFICATIONS

---

Attribute	Detail
-----------	--------



Brand	Allibert
Model	California Sofa
Product Dimensions (D x W x H)	26.77"D x 27.17"W x 28.35"H (141 x 68 x 71.5 cm)
Item Weight	24.5 Kilograms
Material Type	Plastic (Robust, durable and UV-resistant)
Seating Capacity	2
Assembly Required	Yes
Indoor/Outdoor Usage	Outdoor
Included Components	Cushions
Product Care Instructions	Clean with a damp cloth
Cushion Fill Material	Foam
Removable Seat Cushion Cover	True


## 8. WARRANTY AND SUPPORT

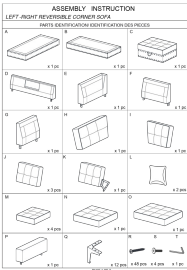

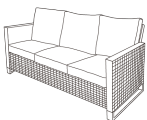
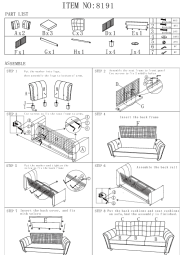
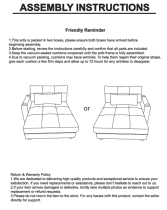
Your Keter California Garden Sofa comes with a manufacturer’s warranty and dedicated customer support.

- **Warranty Type:** This product is covered by a **Lifetime Warranty**. Please retain your proof of purchase for warranty claims.
- **Customer Support:** For any questions, assembly assistance, missing parts, or warranty claims, please contact Allibert customer support. Refer to the contact information provided with your product packaging or visit the official Allibert website.

© 2024 Allibert. All rights reserved.

### Related Documents - California Sofa

<div><p>BALTIMORE TABLE</p><p><small>© 2024 Allibert. All rights reserved.</small></p></div>	<p><a href="#">Allibert Baltimore Table Assembly Instructions</a></p> <p>Step-by-step guide for assembling the Allibert Baltimore Table, including parts list and safety information.</p>
---	---

	<p><a href="#">Assembly Instructions: Left-Right Reversible Corner Sofa - Step-by-Step Guide</a></p> <p>Detailed assembly instructions for the Left-Right Reversible Corner Sofa. Includes parts identification, step-by-step guidance, and tips for building your sectional sofa with storage ottoman.</p>
	<p><a href="#">Latitude Run Sectional Sofa Installation Guide: Assembly and Features</a></p> <p>Detailed installation and assembly guide for the Latitude Run 4-Piece Modular Linen L-Shaped Power Reclining Sectional Sofa. Learn how to assemble your sofa, connect features like zero-gravity and heated seats, and attach legs.</p>
<p><b>ASSEMBLY INSTRUCTION</b></p> 	<p><a href="#">Latitude Run Ingvald Outdoor Sofa Assembly Instructions</a></p> <p>Comprehensive assembly guide for the Latitude Run Ingvald 74.4" Wide Outdoor Rectangle Patio Sofa with Cushions. Includes a detailed parts list and step-by-step instructions for proper setup.</p>
<p><b>ASSEMBLY INSTRUCTION</b> ITEM NO: 8191</p> 	<p><a href="#">Assembly Instruction for Item No. 8191 Sofa - J&amp;E Home</a></p> <p>Step-by-step assembly guide for the J&amp;E Home Item No. 8191 sofa, including part list, assembly instructions, and tips for cushion care. Learn how to assemble your new sofa easily.</p>
<p><b>ASSEMBLY INSTRUCTIONS</b></p> <p><b>Assembly Reminder</b></p> 	<p><a href="#">Sofa Assembly Instructions - Easy Setup Guide</a></p> <p>Detailed step-by-step instructions for assembling your new sofa, including part lists, hardware details, and tips for a smooth setup. Learn how to attach frames, armrests, legs, and cushions for a comfortable and stylish living space.</p>