

Manuals+

[Q & A](#) | [Deep Search](#) | [Upload](#)

manuals.plus /

- › [DeLUX](#) /
- › [DeLUX Wired Vertical Ergonomic Mouse Instruction Manual](#)

DeLUX M618XU

DeLUX Wired Vertical Ergonomic Mouse Instruction Manual

Model: M618XU

INTRODUCTION

The DeLUX M618XU Wired Vertical Ergonomic Mouse is designed to provide a comfortable and natural hand position, reducing wrist strain and discomfort often associated with traditional mice. Its unique vertical design promotes a neutral wrist posture, making it ideal for extended periods of use. This manual provides detailed instructions on setting up, operating, and maintaining your new ergonomic mouse.

PRODUCT OVERVIEW



Figure 1: DeLUX M618XU Wired Vertical Ergonomic Mouse, showing its unique upright design.

ERGONOMIC VOLUTE BIONIC FORM FACTOR

Reduce wrist and hand fatigue



Figure 2: Illustration of the ergonomic volute design, demonstrating how it reduces wrist and hand fatigue by promoting a natural handshake posture.

The DeLUX M618XU features a unique vertical design that aligns your hand and wrist in a natural handshake position, minimizing pronation and pressure on the carpal tunnel. It includes a removable palm rest for added support and comfort.

Button Layout

4200DPI TRACKING

Less Movement. Less Fatigue



Figure 3: Detailed button layout of the DeLUX M618XU mouse.

Table 1: Button Functions

Number	Button Name	Function
1	DPI Button	Cycles through DPI settings (800/1200/2400/3200).
2	Forward Button	Navigates forward in web browsers or file explorers.
3	Backward Button	Navigates backward in web browsers or file explorers.
4	Left Button	Standard left-click function.
5	Scroll Wheel	Scrolls content vertically. Can also be clicked for middle-click function.
6	Right Button	Standard right-click function.

1. **Connect the Mouse:** Plug the USB connector of the DeLUX M618XU Wired Vertical Ergonomic Mouse into an available USB port on your computer. The mouse is plug-and-play and should be recognized automatically by most operating systems.
2. **Driver Installation (Optional for Advanced Features):** For full customization of the 6 programmable buttons and to adjust DPI up to 4200, download and install the official driver software from the DeLUX website.

Note: Side buttons and driver software are not available for Mac OS.

VERTICAL MOUSE FOR MEDIUM OR LARGE HAND

Anti-slid design

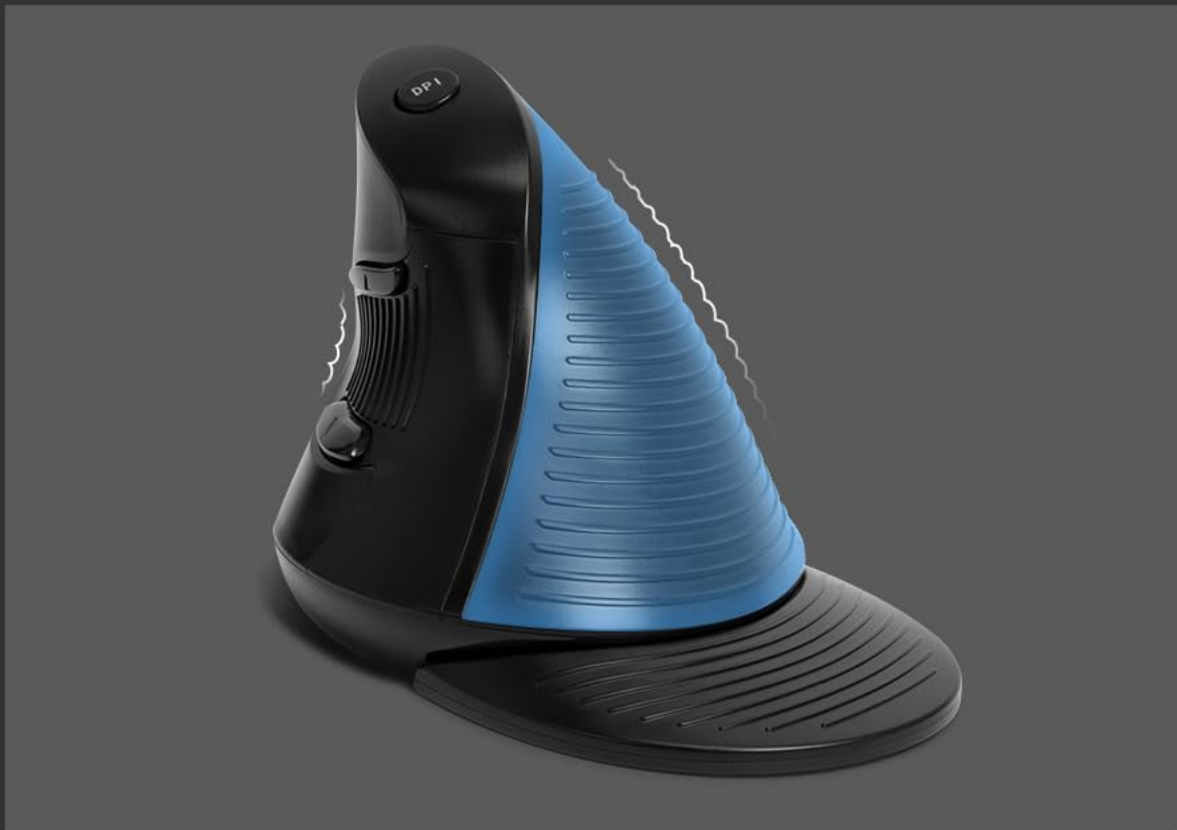


Figure 4: Example of the driver software interface for customizing buttons and DPI settings.

3. **Hand Placement:** Rest your hand naturally on the mouse, allowing your wrist to remain in a neutral, unbent position. The removable palm rest can be used to further support your forearm and prevent wrist friction.



Figure 5: Proper hand placement on the DeLUX M618XU mouse with the palm rest attached.

OPERATING INSTRUCTIONS

- **Basic Clicking and Scrolling:** Use your index finger for the left-click button (4) and your middle finger for the right-click button (6). The scroll wheel (5) is operated with your index finger for vertical navigation.
- **DPI Adjustment:** Press the DPI button (1) located at the top of the mouse to cycle through the preset DPI settings: 800, 1200, 2400, and 3200. Higher DPI settings result in faster cursor movement.

PROGRAMMABLE ERGO VERTICAL MOUSE



Figure 6: Visual representation of DPI settings and tracking capabilities.

- **Using Programmable Buttons:** The forward (2) and backward (3) buttons are pre-programmed for navigation. With the driver software installed, you can reassign these and other buttons to perform various functions, macros, or shortcuts.
- **Palm Rest Usage:** The removable palm rest helps maintain a consistent and comfortable wrist position. Attach or detach it based on your preference for optimal ergonomic support.



Figure 7: DeLUX M618XU mouse without the palm rest.

BUTTONS LAYOUT

- Left Side

- 1 . DPI
- 2 . Forward button
- 3 . Backward button



- Right Side

- 4 . Left button
- 5 . Scroll wheel
- 6 . Right button



Figure 8: Dimensions of the DeLUX M618XU mouse.

MAINTENANCE


To ensure the longevity and optimal performance of your DeLUX M618XU mouse, follow these maintenance guidelines:

- **Cleaning:** Regularly wipe the mouse surface with a soft, damp cloth. For the textured grip areas, use a soft brush or cotton swab to remove any accumulated dust or debris. Avoid using harsh chemicals or abrasive cleaners.
- **Cable Care:** Avoid sharp bends or kinks in the mouse cable to prevent damage. Do not pull the mouse by its cable.
- **Storage:** When not in use for extended periods, store the mouse in a clean, dry environment away from direct sunlight and extreme temperatures.

TROUBLESHOOTING

Table 2: Common Issues and Solutions

Problem	Possible Cause	Solution
---------	----------------	----------

Problem	Possible Cause	Solution
Mouse not responding / Cursor not moving.	Loose USB connection, faulty USB port, driver issue.	Ensure the USB cable is securely plugged into the computer. Try a different USB port. Restart your computer. If using the driver, try reinstalling it.
Inaccurate or jumpy cursor movement.	Dirty optical sensor, unsuitable mouse pad surface, incorrect DPI setting.	Clean the optical sensor on the bottom of the mouse. Use a clean, uniform mouse pad. Adjust the DPI setting using the DPI button (1).
Buttons not functioning as expected.	Driver conflict, incorrect button assignment (if using software).	Ensure the driver software is correctly installed and updated. Check button assignments within the driver software. Remember, side buttons and driver are not supported on Mac OS.
Mouse feels too large or too small.	Hand size mismatch.	<p>The M618XU is designed for medium-sized hands. Refer to the palm size recommendations for optimal fit.</p>  <p>Figure 9: Palm size recommendations for DeLUX vertical mice.</p>

SPECIFICATIONS

- **Model Number:** M618XU
- **Product Dimensions:** 5.3 x 3.9 x 0.1 inches
- **Item Weight:** 6 ounces
- **Connectivity Technology:** Wired
- **Movement Detection Technology:** Optical
- **DPI Settings:** 800, 1200, 2400, 3200 (up to 4200 via driver)
- **Special Features:** Ergonomic Design, 6 Programmable Buttons, Soundless (silent click buttons)
- **Compatibility:** Windows 8/10/11/XP/Mac OS (Note: Side buttons and driver not available for Mac)

WARRANTY AND SUPPORT

For warranty information and technical support, please refer to the documentation included with your product or visit the official DeLUX website. You may also contact the seller, Delux Technology Co., Ltd., for assistance.

For further assistance, please visit the [DeLUX Store on Amazon](#).



