

X-PRO DB-Z010

X-PRO Hawk Mini Dirt Bike 40CC Gas Power 4-Stroke DB-Z010 User Manual

Model: DB-Z010

1. INTRODUCTION

Thank you for choosing the X-PRO Hawk Mini Dirt Bike. This manual provides essential information for the safe assembly, operation, maintenance, and troubleshooting of your new dirt bike. Please read this manual thoroughly before use to ensure proper function and safety.



Image 1.1: The X-PRO Hawk Mini Dirt Bike, a compact off-road vehicle designed for recreational use.

2. SAFETY INFORMATION

WARNING: This 4-Stroke 40cc Mini Dirt Bike cannot be shipped to California due to state regulations.

Operating a dirt bike can be dangerous if proper safety precautions are not followed. Always prioritize safety to prevent injury or damage.

- Always wear a helmet, eye protection, gloves, and appropriate protective clothing (long sleeves, long pants, sturdy boots) when operating the dirt bike.
- Ensure the rider is of appropriate age and skill level. Manufacturer recommended age for this model is 7-10 years.
- Adult supervision is required for all young riders.
- Perform a pre-ride inspection before each use, checking brakes, tires, chain, and controls.
- Do not operate the dirt bike on public roads, sidewalks, or in areas with pedestrian traffic.
- Maintain a safe distance from other riders and obstacles.
- Never operate the dirt bike under the influence of alcohol or drugs.
- Be aware of your surroundings and potential hazards.

3. WHAT'S IN THE BOX

Upon unpacking, verify that all components are present:

- X-PRO Hawk Mini Dirt Bike (main unit)
- Assembly tools (may vary)
- User Manual

If any parts are missing or damaged, contact X-PRO customer support immediately.

4. SETUP AND ASSEMBLY

The X-PRO Hawk Mini Dirt Bike requires some assembly. This typically includes attaching the handlebar brackets, wheels, brakes, number plate, and fenders. Specific steps may vary slightly by model.

4.1. General Assembly Steps

1. **Unpacking:** Carefully remove all components from the packaging.
2. **Handlebar Installation:** Attach the handlebars to the handlebar clamps. Ensure they are centered and tightened securely.
3. **Wheel Attachment:** Install the front and rear wheels. Ensure axles are properly aligned and secured with their respective nuts.
4. **Brake System Setup:** Connect and adjust the front and rear disc brakes. Ensure brake levers operate smoothly and provide adequate stopping power. Refer to the brake system diagram for proper cable routing and adjustment.
5. **Fender and Number Plate:** Attach the front and rear fenders, and the number plate, using the provided hardware.
6. **Pre-Ride Inspection:** Before the first ride, double-check all nuts, bolts, and connections for tightness. Verify tire pressure and fluid levels.



Image 4.1: Key control features including the adjustable throttle grip, emergency kill switch, and front and rear disc brakes.

5. OPERATING INSTRUCTIONS

5.1. Fueling

The X-PRO Hawk Mini Dirt Bike is equipped with a 4-stroke engine. This means it uses straight gasoline and does not require mixing oil with the fuel. Use fresh, unleaded gasoline with an octane rating of 87 or higher. The fuel tank capacity is approximately 0.47 gallons.

- Ensure the engine is off and cool before refueling.
- Refuel in a well-ventilated area, away from open flames or sparks.
- Do not overfill the tank.



Image 5.1: The 4-stroke engine design simplifies fueling and maintenance.

5.2. Starting the Engine (Pull Start)

1. Ensure the fuel valve is open.
2. Set the choke lever to the 'ON' or 'START' position if the engine is cold.
3. Pull the starter cord firmly and smoothly until the engine starts. Do not pull the cord to its full extension or let it snap back.
4. Once the engine starts, gradually move the choke lever to the 'OFF' or 'RUN' position as the engine warms up.

5.3. Riding

- **Throttle Control:** The bike features an adjustable throttle grip. Gently twist the throttle to accelerate. Avoid sudden, aggressive throttle inputs, especially for new riders.
- **Braking:** Use both the front and rear disc brakes smoothly and simultaneously to slow down or stop. Avoid locking the wheels, which can lead to loss of control.
- **Emergency Kill Switch:** In case of an emergency or loss of control, press the emergency kill switch to immediately shut off the engine.
- **Terrain:** The X-PRO Hawk is designed for various off-road terrains, including gravel roads, grassy fields, dirt trails, and forest paths. Always ride within your skill level and the bike's capabilities.



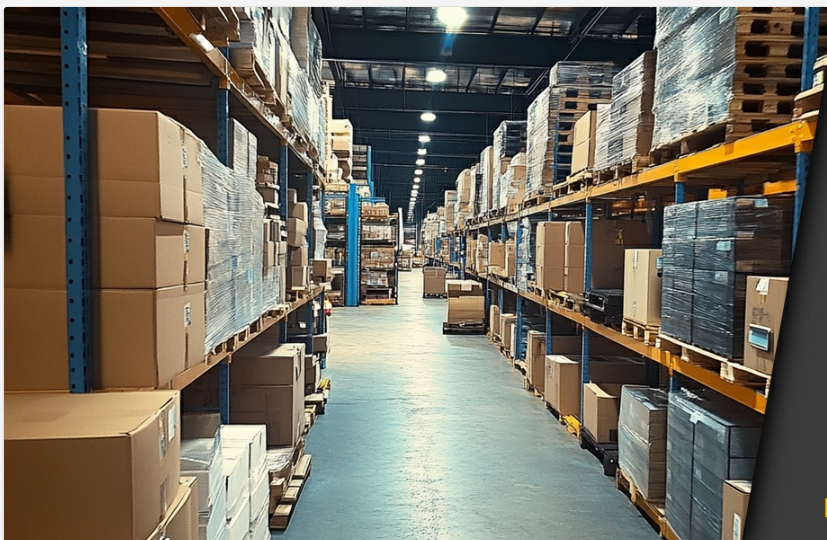
22MPH
Max Speed

0.47Gal
Fuel Capacity

15Miles
Max Range

Noted: Depending on Riders Weight and Road Conditions

Image 5.2: Performance metrics of the X-PRO Hawk Mini Dirt Bike, including maximum speed, fuel capacity, and range.



Do sellers have parts? Not exactly!

Creating an aftermarket parts department is a complex system that requires long-term commitment to technicians, procurement staff, and efficient warehouse. That's why most sellers in our industry lack this capability. But we've made it! We've built reliable supply channels and maintain our own warehouses in the U.S., stocked with a wide range of components for most vehicles we sell. Plus, our skilled technicians ensure every part matches perfectly.



Reliable Supply Chain



Efficient Warehouse

Image 5.3: The X-PRO Hawk Mini Dirt Bike is suitable for a variety of off-road environments.

6. MAINTENANCE

Regular maintenance is crucial for the longevity and safe operation of your dirt bike.

6.1. General Care

- Clean the dirt bike after each ride, especially after riding in muddy or dusty conditions.
- Inspect for any loose fasteners, damaged parts, or leaks.

6.2. Engine Maintenance

The 4-stroke engine is designed for easy maintenance. Regularly check the engine oil level and change it according to the manufacturer's recommendations (typically after the first 5-10 hours, then every 20-30 hours of operation). Refer to the engine manual for specific oil type and capacity.

6.3. Chain Maintenance

- Keep the drive chain clean and lubricated.
- Check chain tension regularly and adjust as needed to prevent excessive slack or tightness.

6.4. Brake Inspection

- Inspect brake pads for wear and replace if necessary.
- Check brake fluid levels (if applicable) and ensure brake lines are free from damage.
- Ensure brake levers have proper free play and engage effectively.



Image 6.1: Detail of the front disc brake, essential for safe operation.

6.5. Tire Care

- Check tire pressure before each ride. Refer to the tire sidewall for recommended pressure.
- Inspect tires (2.5-10 Off-Road Tires) for wear, cuts, or punctures.



Image 6.2: The 2.5-10 off-road tires provide traction on varied surfaces.

6.6. Suspension

- Inspect the rear suspension for proper function and any signs of damage or leaks.



Image 6.3: The rear shock absorber contributes to a comfortable riding experience.

7. TROUBLESHOOTING

This section addresses common issues you might encounter with your X-PRO Hawk Mini Dirt Bike.

7.1. Engine Will Not Start or Stay Running

- Check Fuel:** Ensure there is fresh gasoline in the tank and the fuel valve is open.
- Choke Position:** Verify the choke is in the correct position for starting (ON/START when cold, OFF/RUN when warm).
- Spark Plug:** Inspect the spark plug. It may be fouled or damaged. Clean or replace if necessary.
- Emergency Kill Switch:** Ensure the emergency kill switch is not engaged.
- Carburetor Adjustment:** If the engine starts but stalls when given gas, there might be an issue with the carburetor's fuel mixture. Some users have found a 'sweet spot' for the gas flow lever. Consult a qualified

technician if you are unsure about carburetor adjustments.

7.2. Poor Performance

- **Air Filter:** A dirty air filter can restrict airflow. Clean or replace the air filter regularly.
- **Tire Pressure:** Incorrect tire pressure can affect handling and speed.
- **Chain Tension:** Improper chain tension can lead to power loss.

For persistent issues, contact X-PRO customer support or a certified mechanic.

8. SPECIFICATIONS

Feature	Specification
Model Number	DB-Z010
Engine Type	4-Stroke, Single Cylinder
Displacement	40cc
Starting System	Pull Start
Transmission	Automatic Chain Drive
Max Speed	Up to 22 mph (depending on rider weight and road conditions)
Fuel Capacity	Approx. 0.47 Gallons
Max Range	Approx. 15 Miles (depending on rider weight and road conditions)
Wheel Size	10 inch
Tires	2.5-10 Off-Road Tires
Brake Type	Front & Rear Disc Brakes
Product Dimensions	50 x 22.8 x 29.5 inches (L x W x H)
Recommended Age	7 - 10 years
EPA Approved	Yes



Image 8.1: Visual representation of the dirt bike's dimensions relative to a child.

9. WARRANTY AND SUPPORT


X-PRO is committed to product quality and customer satisfaction. For warranty information, specific parts, or technical assistance, please contact X-PRO customer support.

X-PRO maintains a stock of aftermarket parts for most vehicles, ensuring support for your product's lifespan. Our dedicated after-sales team provides quick response times and strong commitment to customer satisfaction.

For further assistance, you may visit the official X-PRO store or contact their customer service directly. Keep your purchase receipt and model number (DB-Z010) handy when contacting support.

[Visit the X-PRO Store for more information and support.](#)

Related Documents - DB-Z010

 <p>The image shows the cover of the X-PRO 50cc 2-Stroke Dirt Bike Owner's Manual. It features the X-PRO logo at the top left and a large red graphic on the right side.</p>	<p>X-PRO 50cc 2-Stroke Dirt Bike Owner's Manual</p> <p>Comprehensive owner's manual for the X-PRO 50cc 2-Stroke Dirt Bike, covering safety, assembly, operation, maintenance, troubleshooting, and warranty information. Designed for competition use only.</p>
 <p>The image shows a black octagonal STOP sign with the word 'STOP' in white. Below the sign, the text reads: 'YOU MUST READ THE QUICK GUIDE BEFORE YOU START!'.</p>	<p>X-PRO Motorcycle Quick Start Guide and Tips</p> <p>Essential quick start guide and tips for X-PRO motorcycles, including assembly advice, maintenance recommendations, and warranty information.</p>
 <p>The image shows a black octagonal STOP sign with the word 'STOP' in white. Below the sign, the text reads: 'YOU MUST READ THIS QUICK GUIDE BEFORE YOU START!'.</p>	<p>X-PRO ATV Speed Limiter Adjustment and Operation Tips</p> <p>A quick guide from X-PRO on how to adjust the speed limiter on your ATV (model HS110A-A/ATV-D02), along with essential operating tips for safe and proper use. Includes support contact information.</p>
 <p>The image shows a black octagonal STOP sign with the word 'STOP' in white. Below the sign, the text reads: 'YOU MUST READ THIS QUICK GUIDE BEFORE YOU START!'.</p>	<p>X-PRO ATV Speed Limiter Adjustment and Operation Tips</p> <p>Learn how to adjust the speed limiter on your X-PRO ATV (CT110-2/ATV-P012) and find essential operating tips for safe and optimal performance. Includes guidance on oil changes, battery, and more.</p>
 <p>The image shows the cover of the X-PRO 50cc 2-Stroke Dirt Bike Owner's Manual. It features the X-PRO logo at the top left and a large red graphic on the right side.</p>	<p>X-PRO 50cc 2-Stroke Dirt Bike Owner's Manual</p> <p>Comprehensive owner's manual for the X-PRO 50cc 2-Stroke Dirt Bike, covering safety, assembly, operation, maintenance, troubleshooting, and warranty information. Designed for competition use only.</p>
 <p>The image shows the cover of the Jetson Horizon X Electric Dirt Bike User Manual. It features the Jetson logo at the top left and a blue background with white text.</p>	<p>Jetson Horizon X Electric Dirt Bike User Manual</p> <p>Comprehensive user manual for the Jetson Horizon X Electric Dirt Bike, covering safety warnings, product overview, getting started, features, riding tips, maintenance, and warranty information.</p>

