



Manuals.plus /

› EVDO-LINK /

› EVDO-LINK Verizon Wireless Jetpack Inseego MiFi 7730L Mobile Hotspot User Manual

EVDO-LINK 7730L

Verizon Wireless Jetpack Inseego MiFi 7730L Mobile Hotspot User Manual

Model: 7730L | Brand: EVDO-LINK

1. INTRODUCTION

This manual provides essential information for setting up, operating, and maintaining your EVDO-LINK Verizon Wireless Jetpack Inseego MiFi 7730L mobile hotspot. This device offers portable 4G LTE Wi-Fi connectivity, designed for travel and mobile internet access across various regions.

The MiFi 7730L is globally compatible in over 180 countries, supporting multiple LTE and 3G bands. It provides secure Wi-Fi at speeds up to 450 Mbps, allowing connection for up to 15 Wi-Fi-enabled devices. Its robust battery and user-friendly touchscreen enhance its utility for diverse connectivity needs.

2. WHAT'S IN THE BOX

Upon unboxing your Verizon Wireless Jetpack Inseego MiFi 7730L, please ensure all the following items are present:

- Hotspot Device with Battery
- QC Charger with USB Type C Cable
- Verizon SIM card (requires data plan)

WHAT'S INCLUDED

Package Box



Manual



Type-C Data Cable



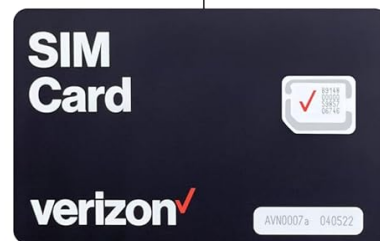
Wall-Charger



Novatel Wireless 7730L



Verizon SIM Card



Removable Battery



Image: All components included in the product packaging, such as the MiFi 7730L device, Verizon SIM card, removable battery, Type-C data cable, wall charger, and user manual.

3. DEVICE OVERVIEW

Familiarize yourself with the physical components and display elements of your MiFi 7730L hotspot.

3.1. Front Display

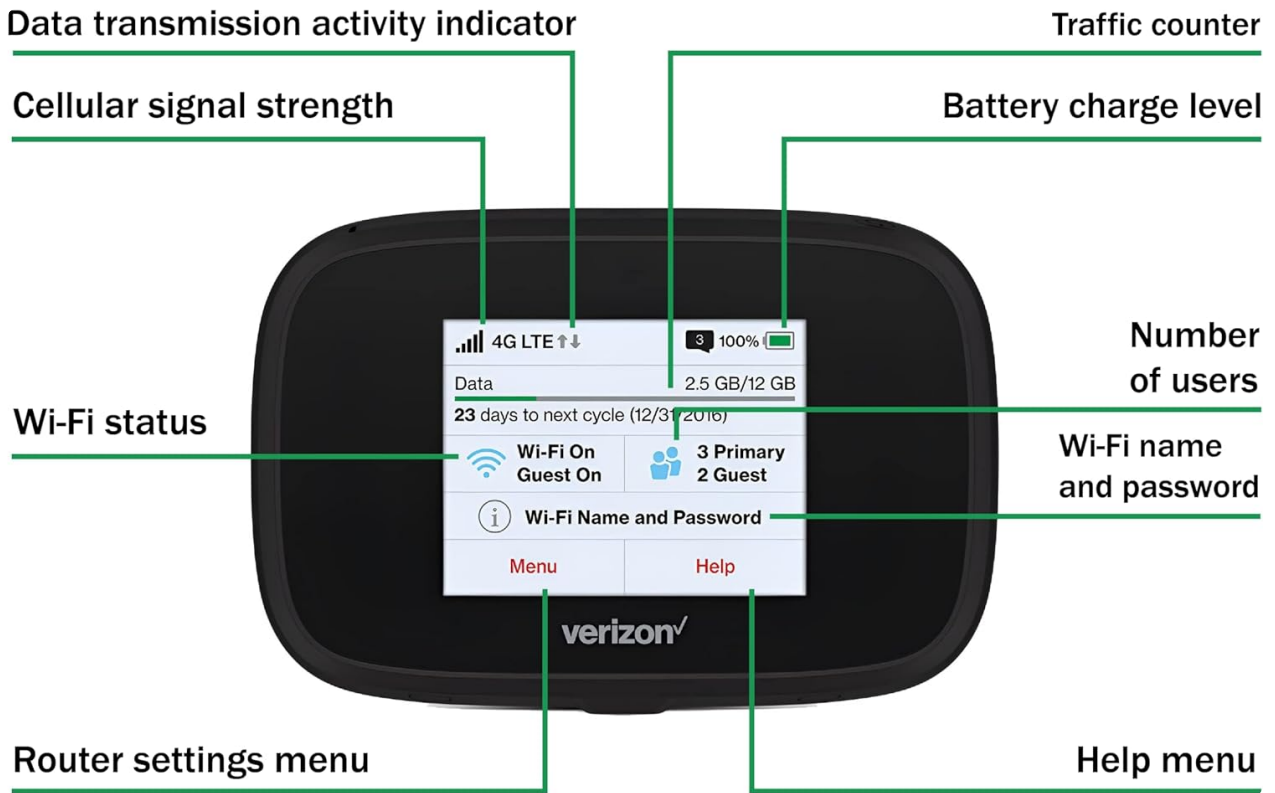


Image: The 2.4-inch TFT color touchscreen displaying data transmission activity, cellular signal strength, Wi-Fi status, router settings menu, traffic counter, battery charge level, number of connected users, Wi-Fi name, password, and help menu options.

3.2. Physical Ports and Buttons

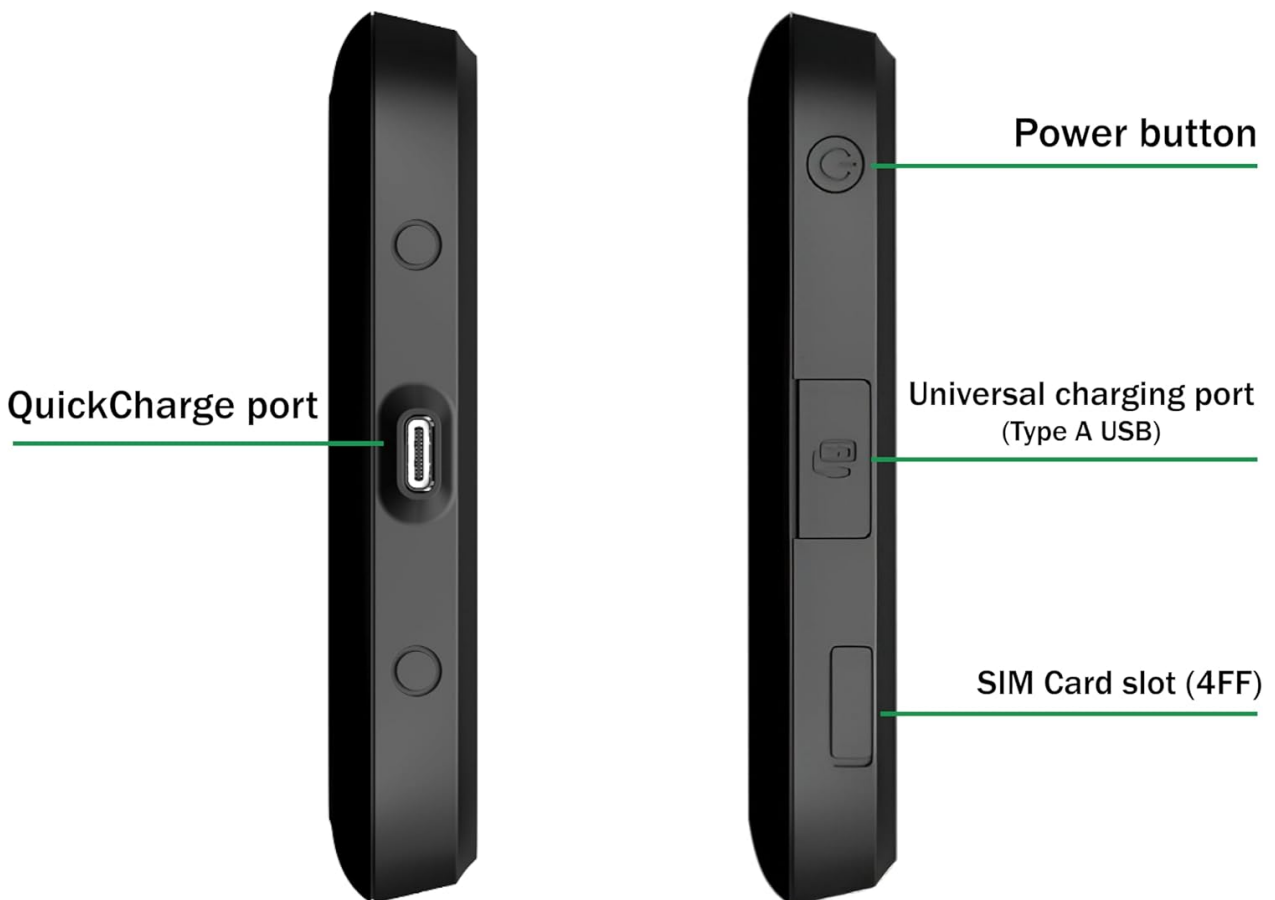


Image: The side of the MiFi 7730L device, highlighting the Power button, QuickCharge port, Universal charging port (Type A USB), and the SIM Card slot (4FF).

3.3. Device Dimensions



Image: Visual representation of the MiFi 7730L's dimensions (5.35 x 3.58 x 2.13 inches) and weight (9.9 ounces).

4. SETUP AND ACTIVATION

4.1. SIM Card Installation

1. Remove the battery cover from the back of the device.
2. Insert the provided Verizon SIM card into the SIM card slot (4FF) as indicated in the device overview.
3. Insert the battery, ensuring it aligns with the connectors.
4. Replace the battery cover securely.

4.2. Initial Power On

Press and hold the Power button located on the top side of the hotspot until the screen illuminates.

4.3. Verizon Activation Guide

To activate your data plan with Verizon, follow these steps:

01 Gather Necessary Information

- Locate your device's IMEI number and the SIM Card ICCID number on the device's packaging box (See Note 1)
- Copy these numbers for reference

02 Begin Activation

- Go to Verizon's Bring Your Own Device (BYOD) page: <https://www.verizon.com/bring-your-own-device/>
- Scroll to the bottom and click the "Connect with an expert" button

03 Provide Details to the Live Agent

When connected with a Verizon live agent, share the following details:

1. Inform them that you have purchased a Mobile Hotspot bundled with a Verizon SIM card
2. Request assistance in purchasing a suitable data plan for your hotspot

Image: First page of the Verizon Activation Guide, detailing steps to gather necessary information and begin activation.

1. **Gather Necessary Information:** Locate your device's IMEI number and the SIM Card ICCID number on the device's packaging box. Copy these numbers for reference.
2. **Begin Activation:** Go to Verizon's Bring Your Own Device (BYOD) page (<https://www.verizon.com/bring-your-own-device/>). Scroll to the bottom and click the "Connect with an expert" button.

04 Customer Identification

- Indicate whether you are a new Verizon customer or an existing customer (See Note 2)
- The agent will guide you through the appropriate verification process based on your customer status and location

05 Mobile Number Assignment

- Provide the IMEI number and SIM Card ICCID number from the device packaging
- The agent will assign a mobile number to your SIM Card ICCID

06 Complete Payment and Activation

- The agent will send you a payment link for the data plan you have chosen (See Note3)
- After a successful checkout, restart your device to initiate activation
- Allow 1-2 hours for your data plan to be fully activated and added to your account

07 Start Using Your Hotspot

- Once activation is complete, your Mobile Hotspot is ready for use with your new prepaid data plan

Enjoy Your Data!

Notes:

1. Another way to find IMEI and SIM ICCID: Remove the battery, then view the IMEI printed inside the battery compartment. SIM card ICCID 20-digit number is printed on the back of a SIM card holder
2. For the new customers: If you are not a resident and do not have either a Tax Identification Number (TIN) or a Social Security Number, please ask a chat agent to provide you with a registration form for non-residents
3. To ensure a successful checkout, please make sure to enter the same ZIP code in both the registration form (for new customers) and the payment link during checkout

Image: Second page of the Verizon Activation Guide, detailing steps for customer identification, mobile number assignment, payment, and starting to use the hotspot.

3. **Provide Details to the Live Agent:** When connected with a Verizon live agent, share the following details: "I want a data plan for a hotspot. Connection type: Prepaid." Indicate whether you have a valid Verizon line. Indicate that you already have a device and SIM card, and provide the IMEI of the device

and the ICCID of the SIM card.

4. **Complete Payment and Activation:** Once the operator has received all the information, they will process it and provide a payment method and option. After you pay for the plan, it will be activated on the SIM card. This usually takes 1-2 hours but can take up to 24 hours.
5. **Start Using Your Hotspot:** Once activation is complete, your Mobile Hotspot is ready for use with your new prepaid data plan.

5. OPERATING THE HOTSPOT

5.1. Connecting Devices

The MiFi 7730L allows you to connect up to 15 Wi-Fi-enabled devices simultaneously. To connect a device:

1. Ensure your hotspot is powered on.
2. On your Wi-Fi-enabled device (smartphone, tablet, laptop), search for available Wi-Fi networks.
3. Select the Wi-Fi network name (SSID) displayed on your MiFi 7730L's touchscreen.
4. Enter the Wi-Fi password displayed on the hotspot's screen.

5.2. Using the Touchscreen

The 2.4-inch TFT color touchscreen provides access to network status, data usage, and settings. Tap on the screen to navigate through menus and adjust settings such as Wi-Fi name, password, and guest Wi-Fi options.

5.3. Guest Wi-Fi

For added security, you can enable a Guest Wi-Fi network. This allows others to connect to the internet without accessing your primary network. Manage Guest Wi-Fi settings through the touchscreen menu.

5.4. Power Bank Function (Jump Boost)

The MiFi 7730L can also function as a power bank. Connect your smartphone or other USB devices to the Universal charging port (Type A USB) to recharge them on the go.

6. KEY FEATURES

- **Global Compatibility:** Unlocked and compatible in over 180 countries, supporting 9 LTE and 4 3G bands. Works with Verizon, T-Mobile, and most US carriers (APN setup may be required for non-Verizon networks).
- **High-Speed Connectivity:** Provides secure Wi-Fi with speeds up to 450 Mbps, depending on the operator's network.
- **Robust Security:** Equipped with Guest Wi-Fi, password protection, Admin Web Interface, and VPN pass-through to protect your mobile internet data.
- **Extended Battery Life:** Features a 4400 mAh battery, offering up to 8 hours of active use and up to 24 hours of standby time.
- **Fast Charging:** Quick Charge (QC) technology allows the device to charge to 100% in approximately 2.5 hours.
- **External Antenna Support:** Includes two MIMO connectors for connecting an external amplifying antenna (not included) to improve signal in areas with poor mobile network coverage.
- **User-Friendly Interface:** The 2.4-inch TFT color touchscreen provides intuitive access to device status and settings.

7. SPECIFICATIONS

Feature	Detail
Model Name	7730L
Brand	EVDO-LINK
Manufacturer	Novatel Wireless
Connectivity Technology	LTE, USB, Wi-Fi
Wireless Communication Standard	802.11ac
Frequency Band Class	Dual-Band
Battery Capacity	4400 mAh (Lithium Ion)
Active Use Time	Up to 8 hours
Standby Time	Up to 24 hours
Charging Time (QC)	2.5 hours to 100%
Screen	2.4 inch TFT color touchscreen
Max Connected Devices	15
LTE Frequency Bands	B2/B3/B4/B5/B7/B13/B20/B28 (9 bands)
3G HSPA+/UMTS Bands	B5/B8/B2/B1 (4 bands)
Item Weight	9.9 ounces
Package Dimensions	5.35 x 3.58 x 2.13 inches

8. MAINTENANCE

8.1. Battery Care

- To maximize battery life, avoid extreme temperatures.
- Charge the device using the provided QC Charger and USB Type C Cable.
- If storing the device for an extended period, ensure it has a partial charge (around 50%) to prevent deep discharge.

8.2. Cleaning

- Use a soft, dry cloth to clean the device's exterior.
- Avoid using liquid cleaners or abrasive materials, as these can damage the device.

9. TROUBLESHOOTING

9.1. No Service/Connectivity Issues

- **Check Signal Strength:** Verify the cellular signal strength indicator on the touchscreen. If low, try moving to an area with better reception or consider using an external MIMO antenna.

- **Verify Data Plan:** Ensure your Verizon data plan is active and has available data. Contact Verizon customer service if unsure.
- **APN Settings:** If using a non-Verizon SIM card, you may need to manually configure the Access Point Name (APN) settings. Refer to your carrier's instructions or contact their support.
- **Restart Device:** Power off the hotspot, wait a few seconds, and then power it back on.

9.2. Slow Internet Speeds

- **Network Congestion:** Speeds can vary based on network traffic in your area.
- **Number of Connected Devices:** Too many devices connected simultaneously can reduce individual speeds.
- **Signal Strength:** Poor cellular signal directly impacts internet speed.

9.3. Battery Not Charging

- **Check Cable and Charger:** Ensure the USB Type C cable and QC Charger are properly connected and functioning.
- **Power Source:** Try a different power outlet or USB port.

10. WARRANTY AND SUPPORT

For warranty information, please refer to the documentation provided by the manufacturer, Novatel Wireless, or contact EVDO-LINK directly. For assistance with device setup or technical issues, phone assistance is available during business hours.