

## Outsunny 84G-393V00GY

# Outsunny Expandable Patio Dining Table Instruction Manual

Model: 84G-393V00GY | Brand: Outsunny

## 1. INTRODUCTION

This manual provides essential information for the safe assembly, operation, and maintenance of your Outsunny Expandable Patio Dining Table. Please read these instructions thoroughly before use and retain them for future reference. The Outsunny Expandable Patio Dining Table is designed for outdoor dining, accommodating 4 to 6 people. It features an aluminum frame and an extendable tabletop for versatile use.

## 2. SAFETY INFORMATION

- **Stable Surface:** Always use the table on a stable, level surface to prevent tipping.
- **Weight Capacity:** Do not exceed the maximum weight recommendation of 154 lbs (70 kg) on the tabletop.
- **Assembly:** Ensure all components are securely fastened before use. Refer to the assembly section for detailed instructions.
- **Children:** Keep children away from the table during assembly and ensure they do not climb on or play with the table unattended.
- **Outdoor Use:** This table is designed for outdoor use. Prolonged exposure to extreme weather conditions may affect its lifespan.
- **Moving the Table:** When moving the table, lift it rather than dragging to prevent damage to the legs or floor.

## 3. PACKAGE CONTENTS

Please verify that all parts are present before beginning assembly. If any parts are missing or damaged, contact customer support.

- Tabletop sections (main and extension leaf)
- Table legs
- Adjustable foot pads
- Assembly hardware (screws, bolts, etc.)
- Assembly tool (e.g., screwdriver)

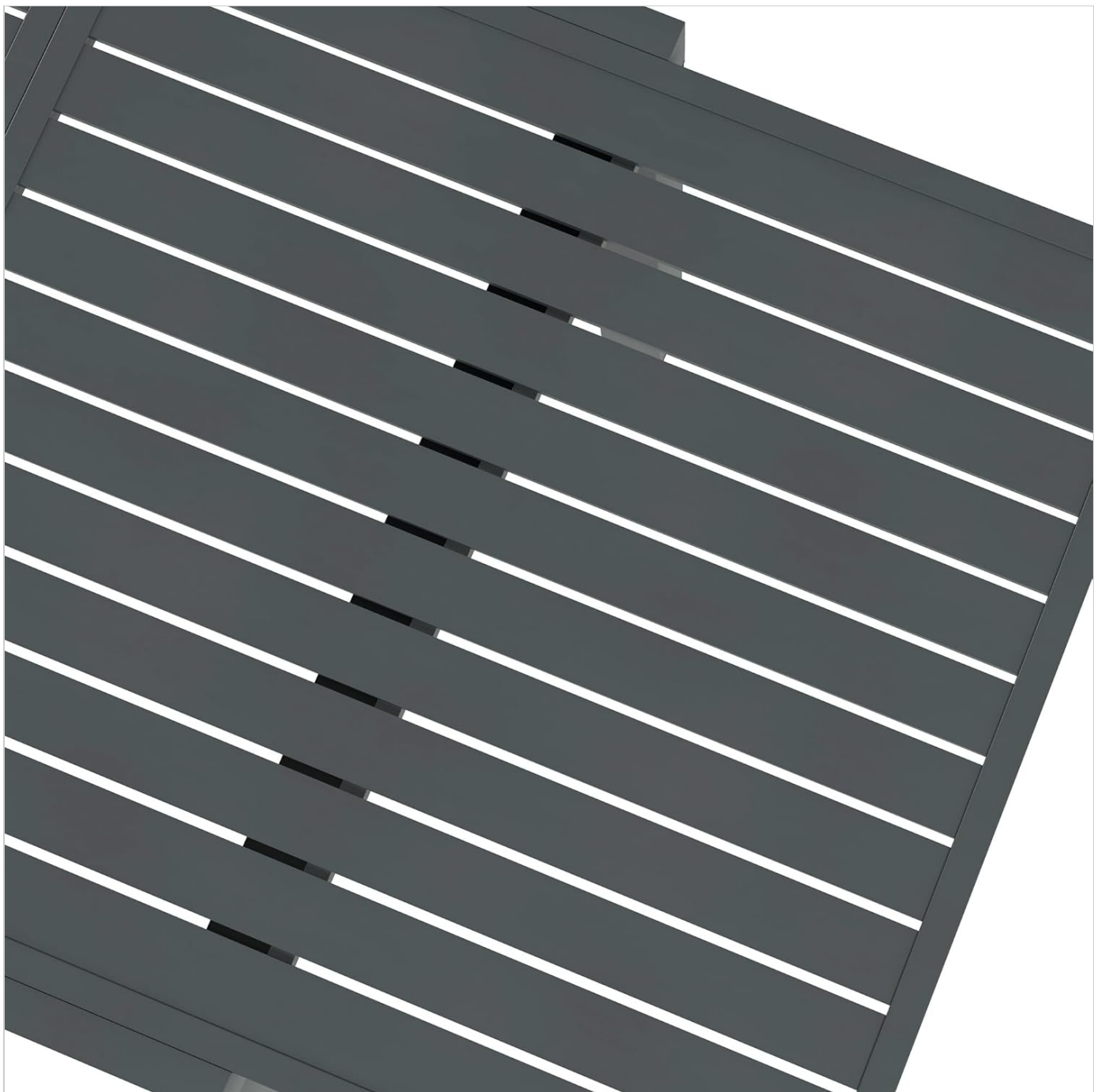
## 4. ASSEMBLY INSTRUCTIONS

Assembly is required for this product. It is recommended that **two people** perform the assembly. A screwdriver is recommended for assembly.

1. **Unpack Components:** Carefully remove all parts from the packaging and lay them out on a clean, soft surface to prevent scratches.
2. **Attach Legs:** Securely attach the table legs to the main tabletop frame using the provided hardware. Ensure all screws are tightened.
3. **Install Adjustable Foot Pads:** Screw the adjustable foot pads into the bottom of each leg. These can be adjusted to stabilize the table on uneven surfaces.
4. **Integrate Extension Mechanism:** If not pre-assembled, connect the self-storing leaf extension mechanism to the main tabletop.
5. **Final Check:** Verify that all connections are tight and the table is stable before use.



Image: Aluminum frame detail, showing stability and lightweight design.



*Image: Adjustable foot pad for stability.*

## 5. OPERATING INSTRUCTIONS

---

### 5.1 Expanding the Table

To expand the table from its compact square form to a rectangular dining table:

1. **Clear the Table:** Remove all items from the tabletop.
2. **Unlock Mechanism:** Locate the locking mechanism (often a latch or button) on the underside or side of the table. Release it.
3. **Pull Apart:** Gently pull the two main halves of the tabletop apart. The extension leaf, if self-storing, will typically rise into position or can be manually placed.
4. **Extend Leaf:** Position the extension leaf between the two main halves.
5. **Push Together:** Push the main halves back together until they meet the extension leaf and form a continuous surface.



6. **Lock in Place:** Re-engage the locking mechanism to secure the table in its extended position.

## 5.2 Collapsing the Table

To collapse the table back to its compact square form:

1. **Clear the Table:** Ensure the table is completely clear of items.
2. **Unlock Mechanism:** Release the locking mechanism.
3. **Pull Apart:** Gently pull the two main halves of the tabletop apart slightly.
4. **Retract Leaf:** Remove the extension leaf or guide it back into its self-storing compartment.
5. **Push Together:** Push the main halves back together until they meet.
6. **Lock in Place:** Re-engage the locking mechanism to secure the table in its collapsed position.



*Image: Table in expanded configuration, accommodating more people.*





# SLATTED DESIGN

Adds a classic touch and is easier to drain after rain

*Image: Table in compact square configuration.*

Your browser does not support the video tag.

*Video: Demonstration of the Outsunny Patio Dining Table, showcasing its design and functionality.*

## 6. MAINTENANCE

- **Cleaning:** Wipe clean with a damp cloth. Avoid harsh chemicals or abrasive cleaners that could damage the finish.
- **Inspection:** Periodically check all bolts and screws to ensure they remain tight. Retighten as necessary.
- **Storage:** During prolonged periods of non-use or severe weather, consider covering the table or storing it indoors to extend its lifespan.
- **Rust Prevention:** The aluminum frame is rust-proof, but regular cleaning helps maintain its appearance.



# ADJUSTABLE FOOT PAD

Keep the table stable on uneven floor

*Image: Slatted design for easy drainage and cleaning.*

## 7. TROUBLESHOOTING

- **Table Wobbles:**

- Ensure the table is on a level surface.
- Adjust the foot pads on each leg until the table is stable.
- Check all leg attachments and tighten any loose screws.

- **Difficulty Expanding/Collapsing:**

- Ensure the locking mechanism is fully disengaged.
- Verify that no debris is obstructing the extension mechanism.
- Apply a small amount of silicone lubricant to moving parts if resistance persists.

## 8. SPECIFICATIONS

Feature	Detail
Brand	Outsunny
Model Number	84G-393V00GY
Material	Aluminum (Frame, Top, Base, Handle)
Color	Grey (Top: gray, Base: Black, Handle: gray)
Product Dimensions (Collapsed)	35.5" L x 35.5" W x 29.5" H
Product Dimensions (Extended)	70.75" L x 35.5" W x 29.5" H
Item Weight	33 Pounds (14.97 kg)
Maximum Weight Recommendation	154 Pounds (70 kg)
Seating Capacity	4 (Unextended), 6 (Extended)
Table Extension Mechanism	Self Storing Leaf
Required Assembly	Yes
Recommended Number of People for Assembly	2
Tools Recommended For Assembly	Screwdriver
Indoor/Outdoor Usage	Outdoor
Product Care Instructions	Wipe Clean

## 9. WARRANTY AND SUPPORT

This product comes with a **1-year warranty** against manufacturer defects. For warranty claims, missing parts, or technical support, please contact Outsunny customer service. Keep your purchase receipt as proof of purchase. For further assistance, visit the [Outsunny Store on Amazon](#).

