

PawHut D51-131GY

PawHut 2-Tier Wood Rabbit Hutch D51-131GY Instruction Manual

1. INTRODUCTION

This manual provides essential information for the safe and effective use of your PawHut 2-Tier Wood Rabbit Hutch, Model D51-131GY. Please read all instructions carefully before assembly and use. Retain this manual for future reference.

The PawHut 2-Tier Wood Rabbit Hutch is designed to provide a secure and comfortable living space for small animals such as rabbits. It features a multi-level design with a sheltered sleeping area and an integrated outdoor run, constructed from durable fir wood and steel wire.

2. SAFETY GUIDELINES

- Ensure all parts are securely fastened before placing animals inside.
- Regularly inspect the hutch for any damage or loose components that could pose a risk to your pets.
- Place the hutch on a flat, stable surface to prevent tipping.
- Provide adequate ventilation and protection from extreme weather conditions.
- This hutch is intended for small animals. Do not overcrowd the hutch.

3. PACKAGE CONTENTS

Before beginning assembly, verify that all components are present and undamaged. Refer to the included parts list (typically found in the packaging) to ensure you have everything required.

4. SETUP AND ASSEMBLY

Assembly typically involves connecting pre-fabricated panels and securing them with the provided hardware. Follow the step-by-step instructions provided in your product packaging for detailed guidance.

1. **Unpack Components:** Carefully remove all parts from the packaging and lay them out.

2. **Identify Parts:** Match each component to the corresponding diagram in your assembly guide.
3. **Assemble Main Structure:** Begin by constructing the main two-tier hutch section.
4. **Attach Outdoor Run:** Connect the outdoor run securely to the main hutch.
5. **Install Ramp:** Position the anti-slip ramp to allow easy access between the hutch's levels.
6. **Secure Doors and Trays:** Ensure all doors are properly installed and latches function correctly. Insert the slide-out trays.
7. **Placement:** Choose a suitable outdoor location that offers protection from direct sunlight and harsh weather.

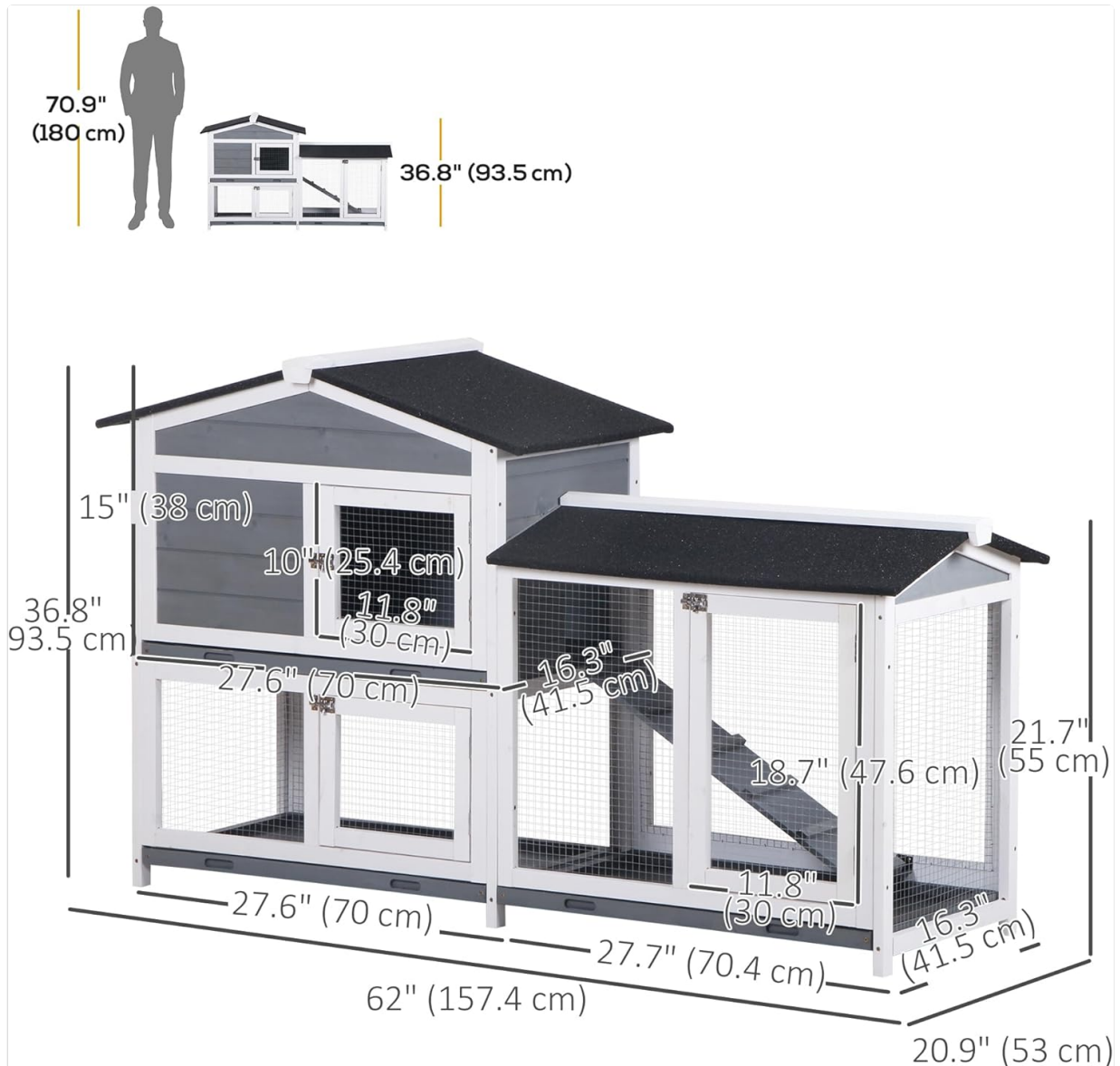


Figure 4.1: Overall dimensions of the PawHut 2-Tier Wood Rabbit Hutch. This diagram illustrates the length, width, and height of the assembled hutch.

MORE DETAILS



A RAMP



Enter the main room easily



ASPHALT ROOF



Keep home dry and warm

Figure 4.2: Close-up views of the anti-slip ramp and the asphalt roof. The ramp facilitates safe movement between levels, and the asphalt roof provides weather protection.

5. OPERATING INSTRUCTIONS

The PawHut Rabbit Hutch is designed for ease of use and animal comfort.

- **Access Doors:** The hutch features multiple lockable doors for convenient access to your pets and for cleaning. Ensure all latches are securely closed to prevent escapes and protect against predators.
- **Ramp Usage:** The internal ramp allows your rabbit to move freely between the enclosed sleeping area on the upper tier and the spacious outdoor run on the lower tier.
- **Sheltered Area:** The upper tier provides a private, sheltered space for resting and sleeping.
- **Outdoor Run:** The lower tier offers an open, wire-enclosed area for exercise and fresh air.



3
Lockable
Doors

MULTIPLE ENTRANCES

Easily access to your lovely pets

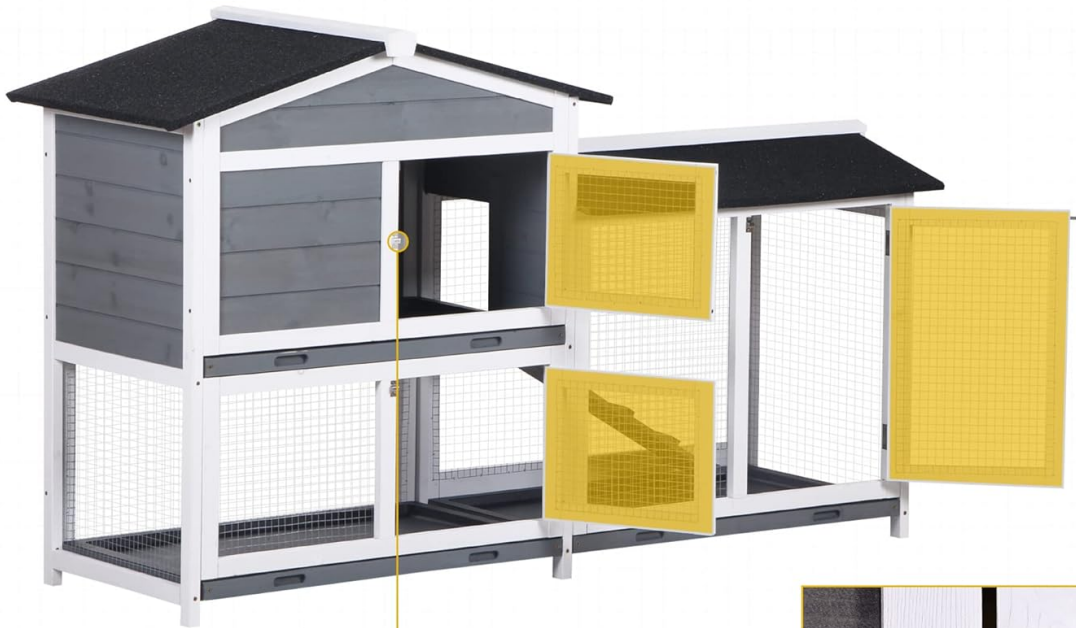


Figure 5.1: An illustration highlighting the three lockable doors on the PawHut rabbit hutch, providing easy access for pets and cleaning.

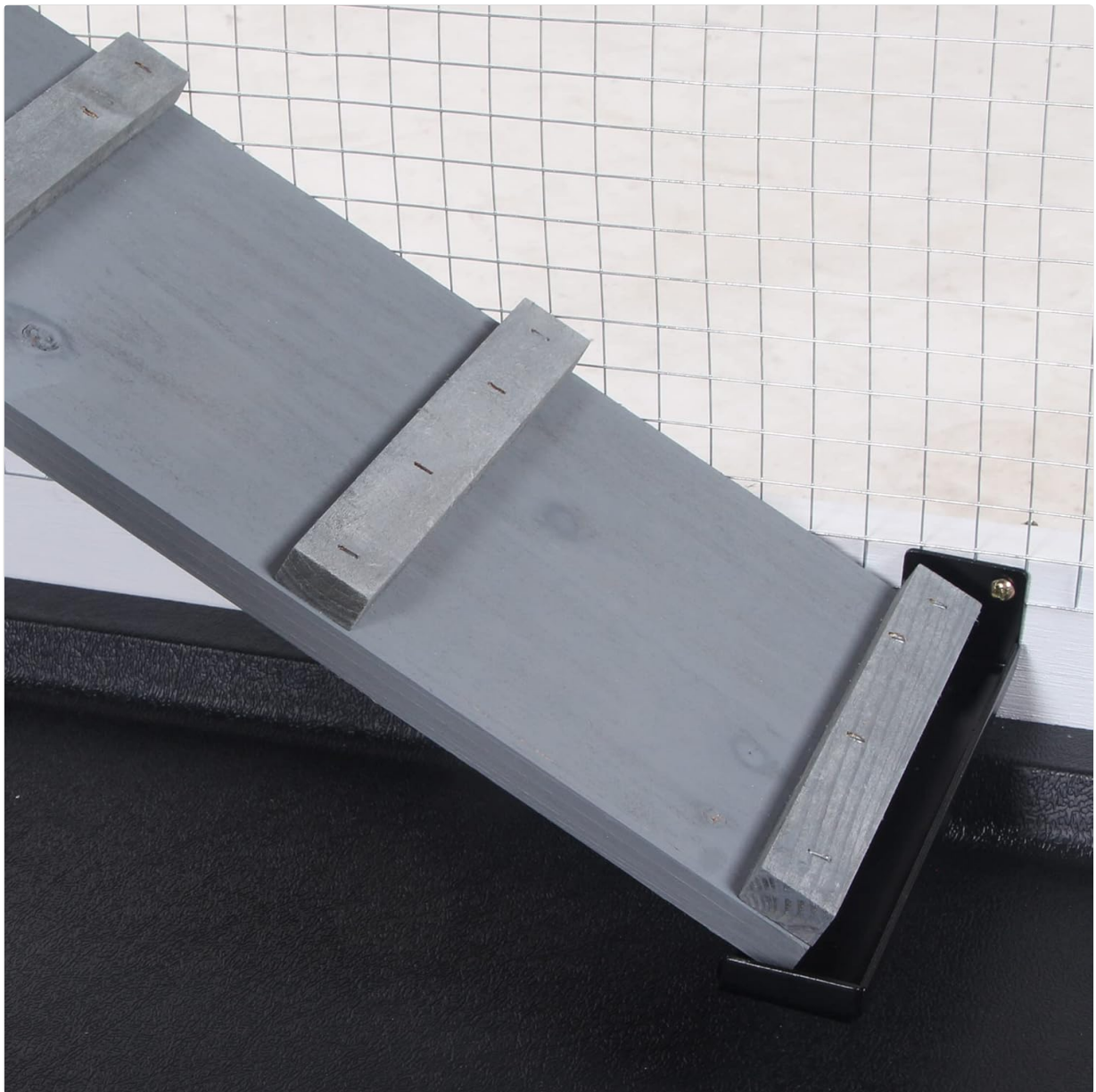


Figure 5.2: An interior shot of the hutch, showing a rabbit inside the enclosed sleeping area, accessible via a door.

Video 5.1: This video showcases the PawHut Rabbit Hutch in an outdoor setting, highlighting its features and design, including the multi-level structure and access points.

6. MAINTENANCE AND CLEANING

Regular maintenance and cleaning are crucial for the health and well-being of your pets and the longevity of the hutch.

- **Slide-Out Trays:** The hutch is equipped with three slide-out trays (middle and bottom) for easy waste removal. Pull out the trays, dispose of waste, clean the trays with pet-safe disinfectant, and replace them.
- **Wood Care:** The fir wood construction is sealed with paint for safety and durability. Periodically wipe down wooden surfaces with a damp cloth. Avoid harsh chemicals that could harm your pets.
- **Roof Maintenance:** The composite asphalt roof provides weather protection. Inspect the roof periodically for any damage or leaks and repair as necessary to keep the interior dry.
- **Wire Mesh:** Check the steel wire mesh regularly for any signs of damage or rust. Repair or replace damaged sections to ensure pet safety and predator protection.



NO-LEAK PLASTIC TRAY

Make cleaning work so much easier



Figure 6.1: A detailed image of the pull-out, no-leak plastic tray designed for easy cleaning and waste collection.

Video 6.1: This short video highlights the features of a PawHut Rabbit Hutch, including aspects relevant to its design and functionality, which may include cleaning access.

7. TROUBLESHOOTING

- **Loose Components:** If any parts become loose, tighten screws or re-secure latches immediately.
- **Animal Not Using Ramp:** Ensure the ramp is stable and free of obstructions. Some animals may need time to adjust or gentle encouragement.
- **Wood Damage:** If wood shows signs of chewing, consider adding chew toys or protective elements to deter further damage.
- **Weather Protection:** In severe weather, consider additional coverings or moving the hutch to a more sheltered area to protect your pets.

8. PRODUCT SPECIFICATIONS

Feature	Detail
Brand	PawHut

Model Number	D51-131GY
Overall Dimensions (L x W x H)	157.48 cm x 53.09 cm x 93.47 cm (62" L x 20.9" W x 36.8" H)
Material	Fir Wood, Steel Wire, Composite Asphalt
Weight	20 kg
Special Features	Lockable, Multi-Level, Non-slip Ramp, Removable Tray, Weather Resistant
Manufacturer	Aosom Canada

9. WARRANTY AND SUPPORT

For warranty information, product support, or to inquire about replacement parts, please contact the manufacturer, Aosom Canada. Refer to your purchase documentation for specific warranty terms and contact details.