



[Manuals.plus](#) /

> [NEWWAY](#) /

> NEWWAY A8BK Wireless Vertical Mouse User Manual

NEWWAY A8BK

NEWWAY A8BK Wireless Vertical Mouse User Manual

Model: A8BK | Brand: NEWWAY

INTRODUCTION

Thank you for choosing the NEWWAY A8BK Wireless Vertical Mouse. This manual provides detailed instructions to help you set up, operate, and maintain your new ergonomic mouse. Designed for comfort and efficiency, the A8BK offers dual connectivity options (2.4 GHz wireless and Bluetooth), adjustable DPI settings, and silent clicks for a seamless user experience across various operating systems.

PRODUCT OVERVIEW

Familiarize yourself with the components of your NEWWAY A8BK mouse.



Image 1: Mouse Button Layout. This diagram illustrates the functions of each button on the NEWWAY A8BK vertical mouse, including left and right click, scroll wheel, DPI adjustment button, and side buttons for navigation.

- **Left Click Button:** Standard primary click function.
- **Right Click Button:** Standard secondary click function.
- **Scroll Wheel:** For vertical scrolling. Also functions as a middle click button.
- **DPI Button:** Adjusts the mouse sensitivity (DPI).
- **Forward Button:** Navigates forward in web browsers or file explorers.
- **Backward Button:** Navigates backward in web browsers or file explorers.

CONNECTIVITÉ WIFI 2.4 GHZ & BT compatible



Image 2: Underside of the Mouse. The bottom of the NEWWAY A8BK vertical mouse, displaying the power switch, connectivity mode switch (Bluetooth/2.4GHz), and the magnetic storage slot for the USB receiver.

- **Power Switch (ON/OFF):** Turns the mouse on or off.
- **Connectivity Mode Switch (2.4G/BT1/BT2):** Selects between 2.4 GHz wireless mode and two Bluetooth channels.
- **USB Receiver Storage:** A magnetic compartment to store the 2.4 GHz USB receiver when not in use.
- **USB-C Charging Port:** Located at the front of the mouse for charging.

SETUP INSTRUCTIONS

1. Charging the Mouse

Before first use, it is recommended to fully charge the mouse. The NEWWAY A8BK mouse features a built-in rechargeable lithium-polymer battery.

1. Locate the USB-C charging port at the front of the mouse.
2. Connect the included USB-C cable to the mouse and the other end to a USB power source (e.g., computer USB port,

USB wall adapter).

3. The mouse's indicator light will show charging status (refer to LED indicator section for details).
4. Once fully charged, disconnect the cable.



Image 3: USB-C Charging Port. A close-up of the USB-C port on the front of the NEWWAY A8BK vertical mouse, used for charging the internal battery.

2. Connecting via 2.4 GHz Wireless

1. Remove the USB receiver from its magnetic storage slot on the underside of the mouse.
2. Plug the USB receiver into an available USB port on your computer.
3. Slide the connectivity mode switch on the underside of the mouse to the "2.4G" position.
4. Turn on the mouse using the power switch.
5. Your computer should automatically detect and install the necessary drivers. The mouse is ready for use.

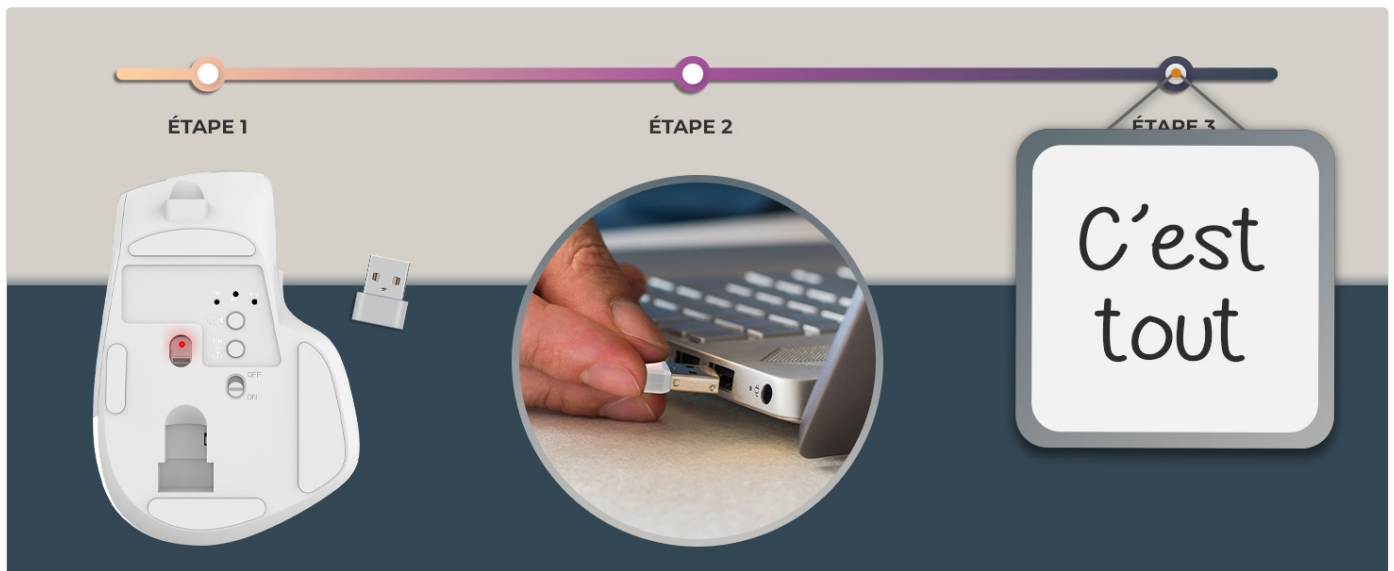


Image 4: 2.4 GHz Wireless Range. This diagram illustrates the wireless connection between the mouse and a computer via the 2.4 GHz USB receiver, indicating a range of up to 10 meters.

3. Connecting via Bluetooth

The NEWWAY A8BK supports two Bluetooth channels (BT1 and BT2).

1. Turn on the mouse using the power switch.
2. Slide the connectivity mode switch on the underside of the mouse to either "BT1" or "BT2" position.
3. Press and hold the connectivity mode switch button (usually a small button next to the switch) for 3-5 seconds until the indicator light starts flashing rapidly, indicating pairing mode.
4. On your computer or device, open Bluetooth settings.
5. Search for new devices and select "NEWWAY A8BK" (or similar name) from the list.
6. Once paired, the indicator light will stop flashing. The mouse is ready for use.
7. To connect to a second device, repeat steps 2-6 using the other Bluetooth channel (BT2).

OPERATING INSTRUCTIONS

1. Adjusting DPI Sensitivity

The DPI (Dots Per Inch) button allows you to adjust the mouse cursor speed and sensitivity. The NEWWAY A8BK offers three DPI settings: 1200, 2400, and 3200 DPI.

- Press the **DPI Button** (located behind the scroll wheel) to cycle through the available DPI settings.
- Each press will change the sensitivity, allowing you to find the optimal speed for your tasks.

2. Ergonomic Design and Silent Clicks

The vertical design of the NEWWAY A8BK mouse promotes a natural handshake position, reducing wrist strain and discomfort during prolonged use. The mouse also features silent click buttons, minimizing noise in quiet environments.



**PROFILE ERGONOMIQUE
POUR UNE PRISE EN MAIN CONFORTABLE**

Image 5: Ergonomic Grip. A hand demonstrating the natural, comfortable grip on the NEWWAY A8BK ergonomic vertical mouse, designed to reduce wrist strain.

3. Backlighting

The mouse features a subtle white LED backlight that enhances its aesthetic appeal. This backlighting is typically active when the mouse is in use and can be turned off via a switch on the underside if desired (refer to Image 2).

RÉTROÉCLAIRAGE LED BLANC

DONNEZ UN STYLE UNIQUE À VOTRE SOURIS



Image 6: White LED Backlighting. The NEWWAY A8BK vertical mouse illuminated by its subtle white LED backlighting, adding a stylish touch to the device.

MAINTENANCE

1. Cleaning Your Mouse

- Turn off the mouse before cleaning.
- Use a soft, lint-free cloth lightly dampened with water or a mild cleaning solution.
- Avoid using harsh chemicals, abrasives, or solvents.
- Do not allow moisture to enter any openings.

2. Battery Care

- To prolong battery life, avoid fully discharging the mouse frequently.
- Charge the mouse when the low battery indicator appears.

- If storing the mouse for an extended period, charge it to about 50% and store in a cool, dry place.

TROUBLESHOOTING

Problem	Possible Cause	Solution
Mouse not responding	Low battery; Mouse is off; Incorrect connection mode; USB receiver not connected (2.4G); Bluetooth not paired.	Charge the mouse; Turn on the mouse; Ensure the connectivity switch is in the correct position (2.4G or BT); Re-insert USB receiver; Re-pair Bluetooth.
Cursor movement is erratic or slow	Low DPI setting; Dirty optical sensor; Uneven surface; Interference.	Press the DPI button to increase sensitivity; Clean the optical sensor; Use on a smooth, opaque surface; Move closer to the receiver/device or reduce interference sources.
Bluetooth connection drops frequently	Distance from device; Interference; Low battery.	Move the mouse closer to the device; Reduce other wireless interference; Charge the mouse.
Mouse not charging	Faulty cable; Faulty USB port; Mouse not properly connected.	Try a different USB-C cable; Use a different USB port; Ensure the cable is securely connected to both the mouse and the power source.

SPECIFICATIONS

Feature	Detail
Brand	NEWWAY
Model Number	ON-MO-A8BK
Connectivity Technology	2.4 GHz Wireless, Bluetooth
Movement Detection	Optical
DPI Settings	1200 / 2400 / 3200 DPI
Number of Buttons	6 (Left, Right, Scroll Wheel, DPI, Forward, Backward)
Hand Orientation	Right-handed
Special Features	Ergonomic Design, Silent Clicks, Rechargeable, White LED Backlighting
Compatible Operating Systems	Windows, Mac, Linux
Battery Type	Rechargeable Lithium-polymer
Charging Port	USB-C
Color	Black
UPC / EAN	3701281111979

WARRANTY AND SUPPORT

Warranty Information

The NEWWAY A8BK Wireless Vertical Mouse comes with a **2-year manufacturer's warranty**. This warranty covers defects in materials and workmanship under normal use. It does not cover damage caused by misuse, accidents, unauthorized modifications, or normal wear and tear.

Please retain your proof of purchase for warranty claims.

Customer Support

For technical assistance, troubleshooting, or warranty inquiries, please contact NEWWAY customer support through the retailer where you purchased the product or visit the official NEWWAY website for contact details.

Note: Availability of spare parts is currently unavailable. Software updates are not guaranteed.

