

EcoFlow ZMS331-2-AKIT-2

EcoFlow ZMS331-2-AKIT-2 100W Rigid Solar Panel User Manual

Model: ZMS331-2-AKIT-2

1. INTRODUCTION

This manual provides detailed instructions for the installation, operation, and maintenance of your EcoFlow ZMS331-2-AKIT-2 100W Rigid Solar Panel. This high-efficiency monocrystalline solar panel is designed for durability and versatile applications, offering up to 23% conversion efficiency. Please read this manual thoroughly before using the product to ensure proper function and safety.

The EcoFlow 100W Rigid Solar Panel is built with robust materials to withstand various weather conditions, providing reliable power generation for years. Its universal compatibility, featuring an MC4 connector, allows it to integrate seamlessly with EcoFlow Power Kits and other third-party solar systems.



Image 1.1: EcoFlow 100W Rigid Solar Panel (2-pack shown)

2. PRODUCT OVERVIEW

The EcoFlow 100W Rigid Solar Panel is engineered for optimal performance and longevity. Key features include:

- **High Efficiency:** Up to 23% conversion efficiency thanks to advanced monocrystalline cell technology.
- **Durable Construction:** Made with aluminum, monocrystalline silicon, and tempered glass for robust weather resistance.
- **Weather Resistant:** IP68 rated for protection against dust, dirt, debris, and water.

- **Easy Installation:** Pre-drilled slots for secure mounting.
- **Universal Compatibility:** Equipped with an MC4 connector for broad system integration.

2.1 Panel Structure

The panel features a multi-layered design for enhanced durability and performance:

INSTALLATION FACILE

Fixation avec supports inclinables et supports en Z.

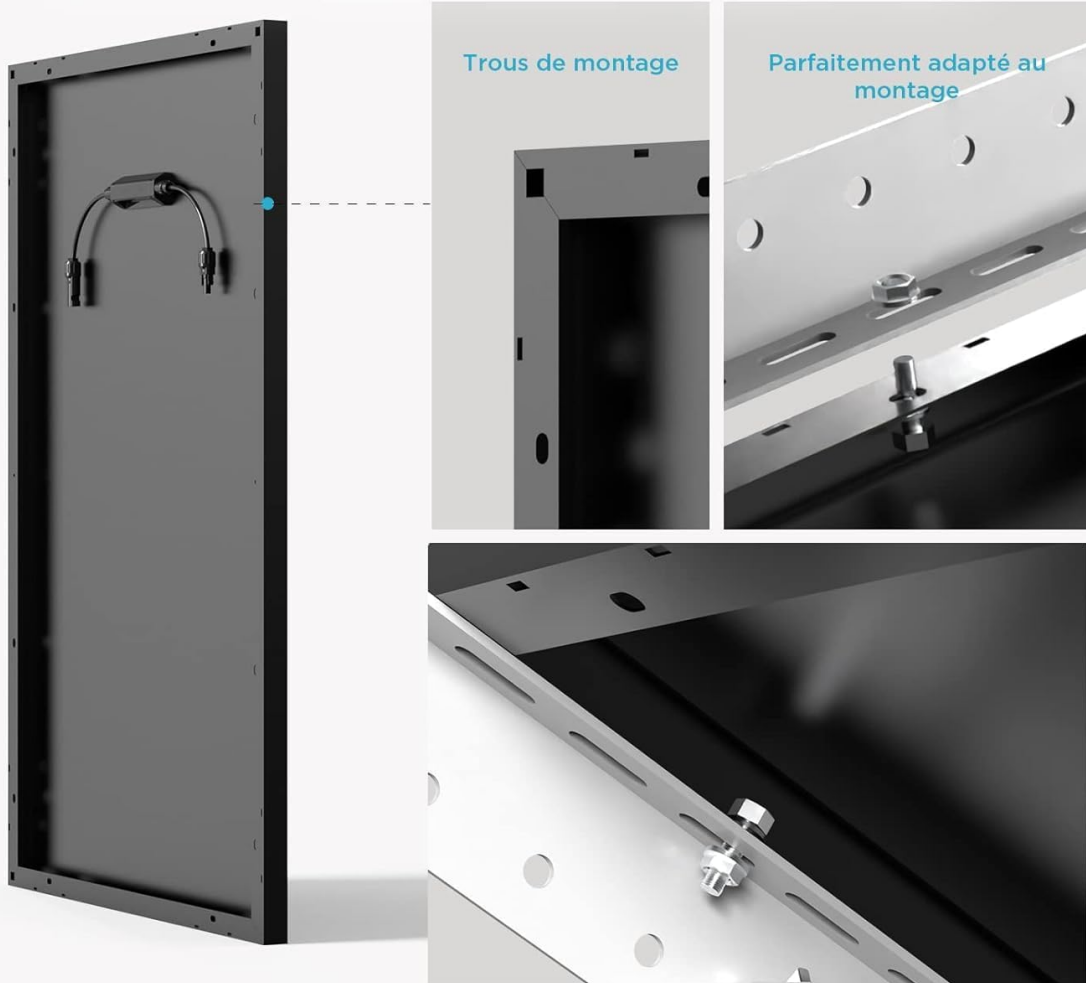


Image 2.1: High-End and Durable Design. The panel consists of highly protective lamination and tempered glass, EVA film, a monocrystalline solar cell, another layer of EVA film, a weather-reinforced back plate, and an anodized aluminum frame.

2.2 Dimensions and Weight

IDÉAL POUR LES KITS ÉNERGIE ECOFLOW



*Les composants des kits Énergie sont vendus séparément.

Image 2.2: Panel dimensions are approximately 98 cm x 58.6 cm x 3 cm (38.58"L x 23.07"W x 1.18"H), and it weighs 6.21 kg.

3. SETUP AND INSTALLATION

The EcoFlow 100W Rigid Solar Panel is designed for straightforward installation. It features pre-drilled slots for secure mounting on various surfaces.

3.1 Mounting Options

The panel can be securely mounted using tiltable supports and Z-brackets. The pre-drilled mounting holes ensure a perfect fit for installation.

CONCEPTION HAUT DE GAMME ET DURABLE

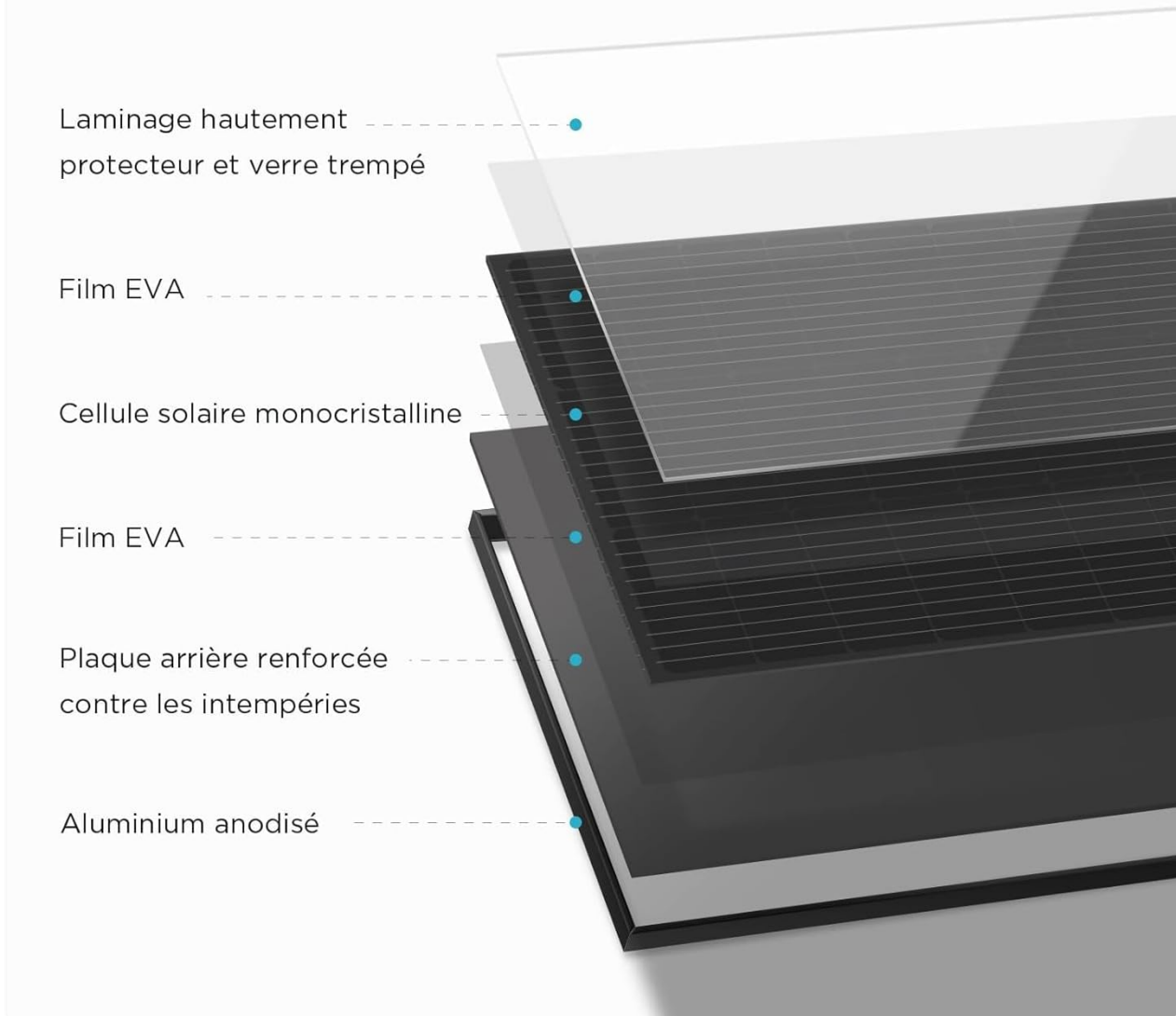


Image 3.1: Easy Installation. The panel features mounting holes and is perfectly adapted for attachment with tiltable supports and Z-brackets.

3.2 Recommended Applications

The rigid design makes these panels suitable for permanent or semi-permanent installations in various environments:

- RVs and Camper Vans
- Building Roofs (e.g., homes, sheds, cabins)
- Boats and Marine Applications
- Off-grid Cabins and Small Homes

ADAPTÉ À VOTRE ENVIRONNEMENT

Camping-cars, toits, bateaux, petites maisons, etc.



Image 3.2: Adapted to Your Environment. Examples include RVs, roofs, boats, and small houses.

Note: Solar panel cables (e.g., XT60 charging cable, 3m solar extension cable, parallel connection cable) are not included with this product and must be purchased separately.

4. OPERATING INSTRUCTIONS

To operate your EcoFlow 100W Rigid Solar Panel, connect it to a compatible power station or solar system.

4.1 Connecting to a Power System

1. Ensure the solar panel is positioned in direct sunlight for maximum efficiency.
2. Connect the MC4 connector from the solar panel to the appropriate input port on your power station or solar charge controller.
3. Verify that the power station or charge controller indicates active charging.

The panel's high efficiency of up to 23% ensures rapid charging of your connected batteries.

HAUTE EFFICACITÉ

Grâce au silicium de haute pureté, le rendement atteint 23 %.



Image 4.1: High Efficiency. Thanks to high-purity silicon, the conversion efficiency reaches 23%.

4.2 Integration with EcoFlow Power Kits

The EcoFlow 100W Rigid Solar Panel is ideal for integration with EcoFlow Power Kits, providing a seamless and efficient power solution.

IDÉAL POUR LES KITS ÉNERGIE ECOFLOW



*Les composants des kits Énergie sont vendus séparément.

Image 4.2: Ideal for EcoFlow Power Kits. The solar panel connects to an EcoFlow Power Kit system. Note: Power Kit components are sold separately.

5. MAINTENANCE

Regular maintenance ensures the longevity and optimal performance of your solar panels.

5.1 Cleaning

- Periodically inspect the panel surface for dirt, dust, leaves, or other debris that may obstruct sunlight.
- Clean the panel surface with a soft cloth and mild, non-abrasive cleaning solution. Avoid harsh chemicals or abrasive materials that could scratch the tempered glass.
- Rinse with clean water and allow to air dry.

5.2 Weather Resistance

The EcoFlow 100W Rigid Solar Panel is designed to be weather-resistant with an IP68 rating, protecting it from dust and water ingress.

PRÊT POUR LES INTEMPÉRIES

L'indice IP68 garantit qu'il résiste à la saleté, à la poussière, aux débris et même étanche.

IP68
ÉTANCHÉITÉ

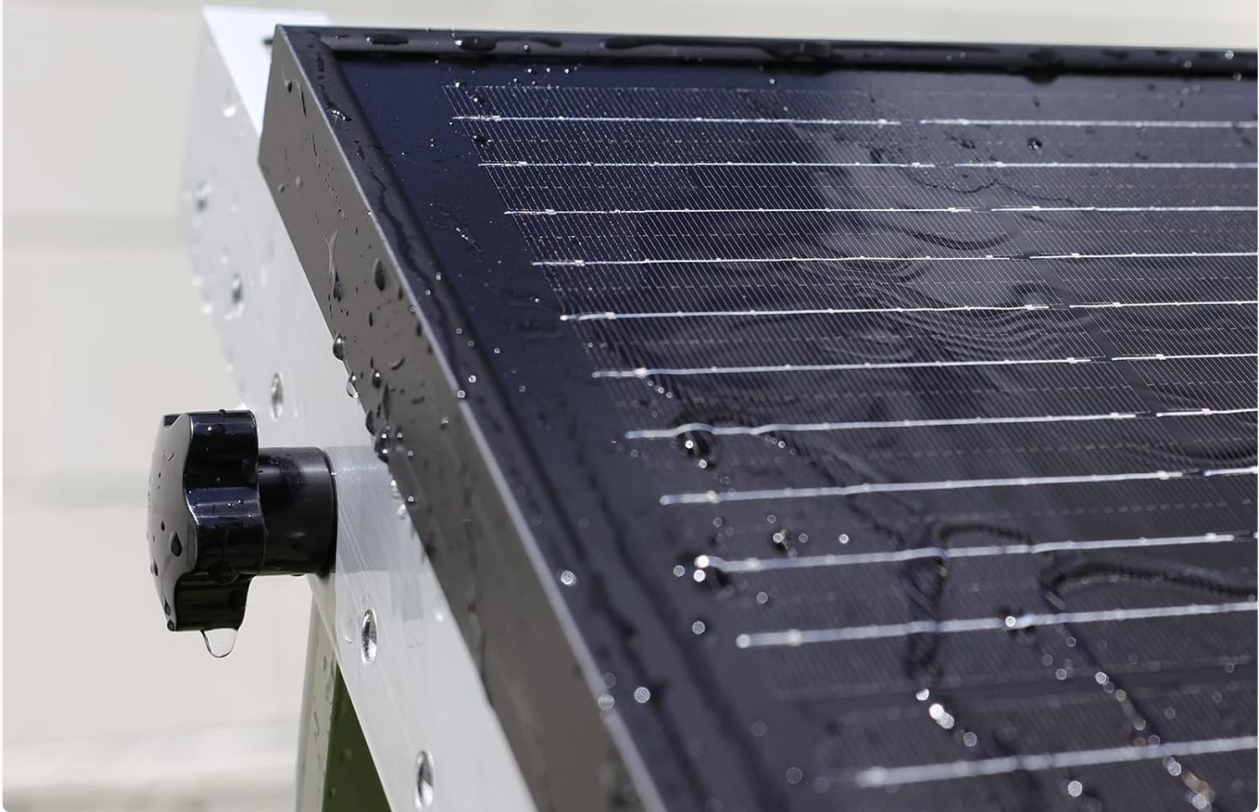


Image 5.1: Ready for All Weather. The IP68 rating ensures resistance to dirt, dust, debris, and is waterproof.

5.3 Inspection

- Regularly check all connections for tightness and corrosion.
- Inspect the panel frame and mounting hardware for any signs of damage or wear.

6. TROUBLESHOOTING

If your solar panel is not performing as expected, consider the following common issues and solutions:

- **No Power Output:**
 - Ensure the panel is in direct sunlight and not shaded.
 - Check all cable connections for proper seating and damage.
 - Verify that the connected power station or charge controller is functioning correctly.
- **Low Power Output:**
 - Clean the panel surface to remove any dirt or debris.

- Adjust the panel's angle to optimize exposure to the sun.
- Ensure no partial shading is occurring (even small shadows can significantly reduce output).

- **Physical Damage:**

- If the tempered glass is cracked or the frame is bent, contact EcoFlow support for assistance. Do not attempt to repair it yourself.

7. SPECIFICATIONS

Feature	Specification
Brand	EF ECOFLOW
Model Number	ZMS331-2-AKIT-2
Maximum Power	100 Watts
Efficiency	Up to 23%
Material	Aluminum, Monocrystalline Silicon, Tempered Glass
Product Dimensions (L x W x H)	23.07" x 1.18" x 38.58" (58.6 cm x 3 cm x 98 cm)
Weight	6.21 kg (13.69 lbs)
Connector Type	MC4
Weather Resistance	IP68
Included Components	2 x 100 W Rigid Solar Panel

8. WARRANTY AND SUPPORT

For warranty information and customer support, please refer to the official EcoFlow website or contact their customer service directly. Keep your purchase receipt as proof of purchase for any warranty claims.

If you require additional accessories such as XT60 charging cables, solar extension cables, or parallel connection cables, these can typically be purchased from authorized EcoFlow retailers or their online store.