

GLOBE 18000151

Globe Heath Zenith Wireless Door Chime Kit Model 18000151 User Manual

Comprehensive instructions for installation, operation, and maintenance.

1. INTRODUCTION

Thank you for purchasing the Globe Heath Zenith Wireless Door Chime Kit, Model 18000151. This kit provides a convenient and reliable solution for your home's doorbell needs, offering easy installation and wireless operation. Please read this manual thoroughly before installation and use to ensure proper function and longevity of your product.

2. PACKAGE CONTENTS

Verify that all components are present in your package:

- Wireless Door Chime Receiver Unit (1)
- Wireless Push Button Transmitter (1)
- Mounting Hardware (Screws, Anchors, Double-sided Adhesive Tape)
- User Manual (This document)



Image 1: Overview of the Globe Heath Zenith Wireless Door Chime Kit, featuring the main chime unit and the push button.

3. SAFETY INFORMATION

Please observe the following safety precautions to prevent injury or damage to the product:

- Do not expose the units to extreme temperatures, direct sunlight, or moisture.
- Do not attempt to open or repair the units yourself. Refer all servicing to qualified personnel.
- Keep batteries out of reach of children. Dispose of used batteries properly according to local regulations.
- Ensure the mounting surface for the push button is clean and dry before installation.

4. SETUP AND INSTALLATION

4.1. Installing the Push Button Transmitter

1. **Select Location:** Choose a suitable location near your door, ensuring it is easily accessible to visitors and protected from direct heavy rain if possible.
2. **Prepare Surface:** Clean the mounting surface thoroughly to remove any dust or debris.
3. **Install Battery:** Open the push button casing (refer to diagram in section 4.3) and insert the required battery (typically a 12V A23 battery, not always included). Ensure correct polarity.
4. **Mounting Options:**
 - **Adhesive Mounting:** Peel the backing from the double-sided adhesive tape and firmly press the push button onto the desired surface for at least 30 seconds.
 - **Screw Mounting:** Use the provided screws and anchors to securely attach the push button to the wall. Mark the screw holes, drill pilot holes if necessary, and then fasten the unit.

4.2. Installing the Chime Receiver Unit

1. **Power Source:** The chime receiver unit is typically battery-operated (e.g., AA batteries, not always included) or plugs into a standard wall outlet.
 - **Battery Operated:** Open the battery compartment on the back of the chime unit and insert the required batteries, observing correct polarity.
 - **Plug-in:** Simply plug the chime unit into an available wall outlet in a central location within your home.
2. **Placement:** Place or mount the chime unit in a location where it can be easily heard throughout your home. Avoid placing it near large metal objects or other electronic devices that may interfere with the wireless signal.



Image 2: Angled view of the chime unit and push button, illustrating their relative sizes and design.

4.3. Pairing (If Applicable)

Most wireless door chime kits come pre-paired. If your units do not communicate, or if you wish to add additional push buttons/chimes, follow these general pairing instructions:

1. **Enter Pairing Mode:** On the chime receiver unit, locate the 'Pairing' or 'Code' button. Press and hold this button for approximately 3-5 seconds until an indicator light flashes or a short tone is heard.
2. **Activate Transmitter:** Within 10-20 seconds of the chime entering pairing mode, press the push button on the transmitter. The chime unit should sound, indicating successful pairing.
3. **Test:** Press the push button again to confirm the chime sounds. If not, repeat the pairing process.

5. OPERATING INSTRUCTIONS

5.1. Basic Operation

Once installed and paired, the system operates automatically. When a visitor presses the push button, the transmitter sends a wireless signal to the chime receiver, which then sounds the selected melody.

5.2. Changing Chime Melody (If Available)

If your chime unit supports multiple melodies, there will typically be a 'Melody' or 'Tune' button on the receiver. Press this button repeatedly to cycle through available melodies until you find your preferred one. The chime will play a preview of each melody as you select it.

5.3. Adjusting Volume (If Available)

Some chime units feature a volume control button or switch. Locate the 'Volume' button (often depicted with speaker icons) and press it to cycle through different volume levels (e.g., High, Medium, Low, Mute).

6. MAINTENANCE

6.1. Battery Replacement

Replace batteries in both the push button transmitter and the chime receiver (if battery-operated) when the chime sounds weak, inconsistently, or stops working entirely. Refer to the battery type specified in the setup section or on the unit itself.

- **Push Button:** Carefully open the casing, remove the old battery, insert a new one with correct polarity, and close the casing securely.
- **Chime Receiver:** Open the battery compartment, replace old batteries with new ones, ensuring correct polarity, and close the compartment.

Important: Always dispose of used batteries responsibly according to local environmental regulations.

6.2. Cleaning

Wipe the exterior of both units with a soft, dry cloth. Do not use abrasive cleaners, solvents, or immerse the units in water.

7. TROUBLESHOOTING

Problem	Possible Cause	Solution
Chime does not sound when button is pressed.	<ul style="list-style-type: none">• Dead or low batteries in push button or chime.• Units are not paired.• Units are out of range.• Interference from other devices.	<ul style="list-style-type: none">• Replace batteries in both units.• Perform pairing procedure (Section 4.3).• Move chime receiver closer to the push button.• Relocate chime receiver away from potential interference sources.
Chime sounds intermittently.	<ul style="list-style-type: none">• Low batteries.• Weak signal due to distance or obstacles.	<ul style="list-style-type: none">• Replace batteries.• Move chime receiver closer or adjust its position.
Chime volume is too low/high.	Volume setting needs adjustment.	Adjust volume using the volume button on the chime receiver (Section 5.3).

8. SPECIFICATIONS


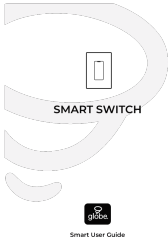

- **Model Name:** OUTDOOR_RECREATION_PRODUCT (Internal designation, refer to Part Number for specific model)
- **Part Number:** 18000151
- **Brand:** GLOBE
- **Material:** Plastic
- **Item Weight:** 6.4 ounces (approx. 181 grams)
- **Package Weight:** 236 Grams
- **Item Package Dimensions (L x W x H):** 3.94 x 3.94 x 3.07 inches
- **ASIN:** B0CVBK4S
- **Manufacturer:** Globe Electric



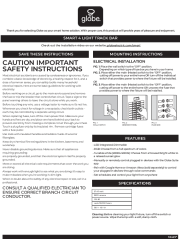
9. WARRANTY AND SUPPORT

This product comes with a manufacturer's warranty. For specific details regarding warranty coverage, duration, and terms, please refer to the warranty information included with your purchase or visit the official Globe Electric website. For technical support, troubleshooting assistance beyond this manual, or to inquire about replacement parts, please contact Globe Electric customer service directly.

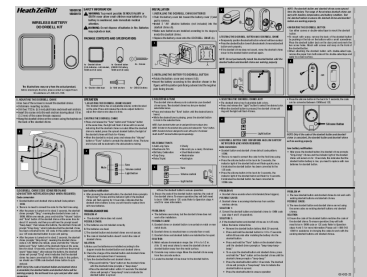
You can typically find contact information on the product packaging or on the manufacturer's official website: www.globe-electric.com (example link, verify actual website).

Related Documents - 18000151

	<p>Globe Streamwatch Xtreme Prepaid User Manual and Setup Guide</p> <p>Comprehensive user manual for the Globe Streamwatch Xtreme Prepaid device. Learn how to connect to the internet, stream content on your TV, access apps via Google Play, and find troubleshooting solutions. Includes setup guides and device information.</p>
	<p>Globe Smart Switch User Guide</p> <p>User guide for the Globe Smart Switch, detailing installation, setup via the Globe Suite™ app, features like remote control, scheduling, and voice assistant integration. Learn how to enhance your home with smart lighting control.</p>
	<p>Globe SMART FLOOR LAMP User Manual and Setup Guide</p> <p>Comprehensive guide for the Globe SMART FLOOR LAMP, including safety instructions, features, specifications, assembly, and connecting to the Globe Suite app and voice assistants like Google Home and Amazon Alexa.</p>

	<p>Globe VGP6, VGP20, VGP20A Vacuum Packaging Machine Instruction Manual</p> <p>Comprehensive instruction manual for Globe VGP6, VGP20, and VGP20A vacuum packaging machines. Covers operation, safety, cleaning, maintenance, and troubleshooting.</p>
	<p>Globe Slicer Instruction Manual: Models G10, G12, G12A, G14</p> <p>Comprehensive instruction manual for Globe food slicers, covering safety, installation, operation, cleaning, maintenance, and troubleshooting for models G10, G12, G12A, and G14. Provided by Globe Food Equipment Co.</p>
	<p>Globe SMART 4 LIGHT TRACK BAR Installation and Safety Guide</p> <p>Comprehensive guide for the Globe SMART 4 LIGHT TRACK BAR, including safety instructions, electrical installation, features, specifications, and app connectivity for smart home integration. This document is primarily in English with supplementary French content.</p>

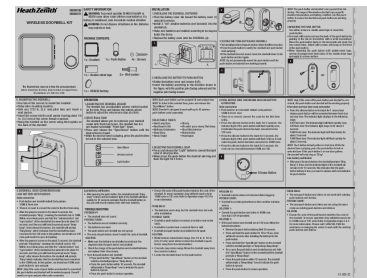
Documents - GLOBE – 18000151



[Heath Zenith Wireless Battery Doorbell Kit: Installation, Operation, and Troubleshooting Guide](#)

A comprehensive guide for the Heath Zenith Wireless Battery Doorbell Kit (Models 18000150, 18000151), detailing installation steps, operation features, code conversion, low battery notifications, troubleshooting common issues, and warranty information.

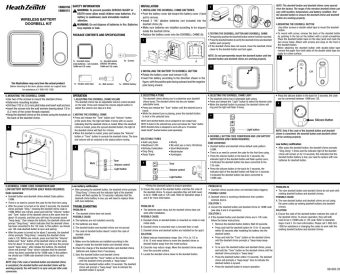
lang:en score:26 filesize: 673.97 K page_count: 4 document date: 2023-09-13



[Heath Zenith Wireless Doorbell Kit - Installation, Operation, and Troubleshooting Manual](#)

Comprehensive user manual for the Heath Zenith Wireless Doorbell Kit (Models 18000150, 18000151). Includes installation instructions, operation guide, tune selection, code conversion, troubleshooting tips, warranty, and FCC compliance.

lang:en score:25 filesize: 1.02 M page_count: 4 document date: 2023-05-10



[\[pdf\]](#) Installation Guide Specifications Diagram Catalog

WIRELESS BATTERY DOORBELL KITNOTE Doorbell chime is designed to work with up to 10 wireless Heath Zenith® doorbell buttons sold separately 2 3 SELECTABLE TUNES Auld Lang Syneb84479d0e56d 5b64 8d35 9ea306fe28d8images thdstatic catalog Images b8 b84479d0 9ea306fe28d8 |||

18000150 **18000151** WIRELESS BATTERY DOORBELL KIT SAFETY

INFORMATION WARNING: To prevent possible SERIOUS INJURY or DEATH never allow small children near batteries. If a battery is swallowed, seek immediate medical attention. WARNING: Do not dispose of batteries in fire. Batteries may explode or leak...

lang:en score:12 filesize: 673.97 K page_count: 4 document date: 2023-09-13