

## TP-Link VIGI NVR2016H

# TP-Link VIGI NVR2016H 16-Channel Network Video Recorder User Manual

## 1. INTRODUCTION

The TP-Link VIGI NVR2016H is a 16-channel network video recorder designed for comprehensive surveillance systems. It supports 4K HDMI video output and offers a 16MP decoding capacity, ensuring high-resolution video capture and playback. This NVR utilizes H.265+ video compression for efficient storage and network usage, is ONVIF compatible for broad camera integration, and features plug-and-play functionality for simplified setup. It also includes two-way audio and remote monitoring capabilities.



Figure 1: Front view of the TP-Link VIGI NVR2016H Network Video Recorder.

## 2. KEY FEATURES

The VIGI NVR2016H offers a range of features to enhance your surveillance experience:

- **4K HDMI Video Output & 16MP Decoding Capacity:** Provides sharp image definition up to 8MP (4K) and supports 8-channel at 2MP decoding for simultaneous live view and playback.
- **16-Channel Simultaneous Playback:** Allows reviewing footage from up to 16 cameras concurrently, with options to increase replay speed and locate events via the video schedule.
- **H.265+ Video Compression:** Reduces video file size without compromising quality, optimizing network bandwidth and storage space.
- **ONVIF Compatibility:** Ensures seamless integration with VIGI and other ONVIF-compliant IP cameras, facilitating flexible network expansion.
- **Plug & Play:** Automatically detects and activates new VIGI IP Cameras, simplifying the installation process.
- **Two-Way Audio:** Supports voice intercom for communication and deterrence.
- **Remote Monitoring:** Access live views and playback via the VIGI app or client software from anywhere.

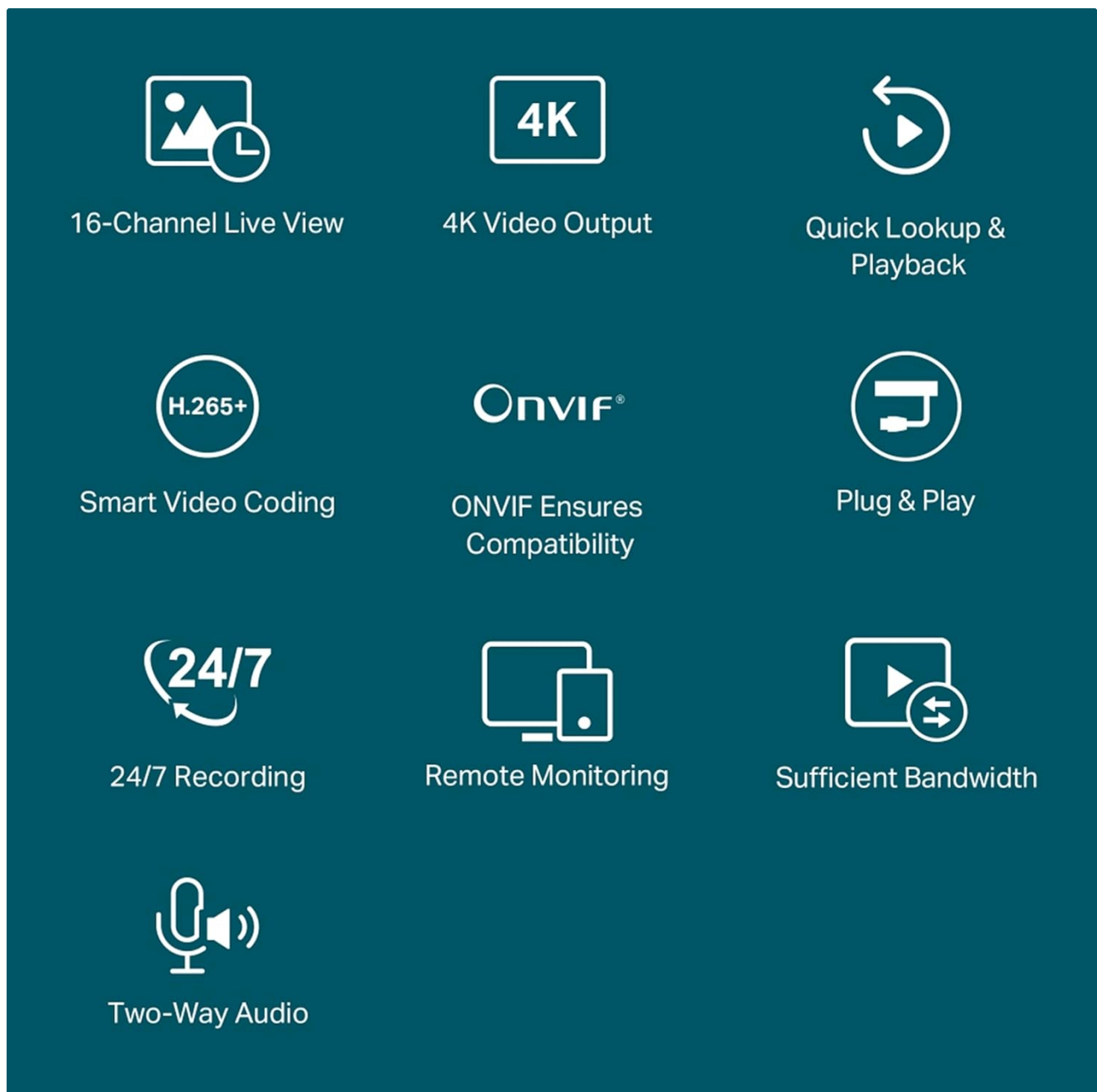
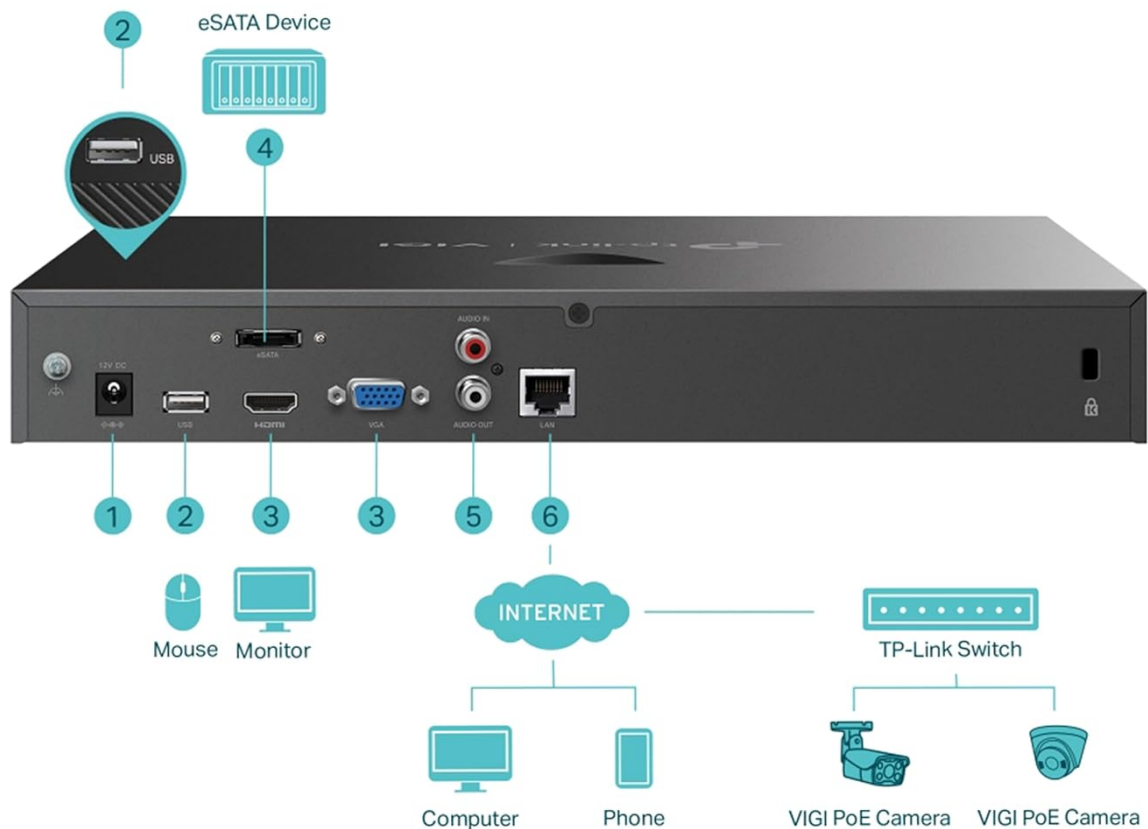


Figure 2: Visual representation of the NVR's core functionalities.

### 3. PRODUCT OVERVIEW

Familiarize yourself with the physical components and ports of the VIGI NVR2016H.



1. Power Supply
2. 2× USB 2.0 Ports for Mouse, Keyboard, or Mobile Hard Disk Connection<sup>s</sup>
3. HDMI and VGA Ports for Video Simultaneous Output
4. 1× eSATA Port to Connect an External Storage Device<sup>s</sup>
5. AUDIO IN and AUDIO OUT for Two-Way Audio
6. LAN Port for Ethernet Connection

Figure 3: Rear panel connections and their functions.

1. **Power Supply:** Connect the provided power adapter here.
2. **USB 2.0 Ports:** Two ports for connecting a mouse, keyboard, or external hard disk.
3. **HDMI and VGA Ports:** For simultaneous video output to a monitor.
4. **eSATA Port:** Connect an external storage device for expanded capacity.
5. **AUDIO IN and AUDIO OUT:** For two-way audio functionality.
6. **LAN Port:** For Ethernet connection to your network.

## 4. SETUP GUIDE

Follow these steps to set up your VIGI NVR2016H:

### 4.1 Initial Hardware Connection

1. **Install Hard Disk Drive (HDD):** Open the NVR casing and securely install one or two SATA HDDs (up to 10TB each) using the provided screws. Ensure the HDD is properly connected to the SATA data and power cables.

2. **Connect Monitor:** Connect a monitor to the NVR's HDMI or VGA port.
3. **Connect Mouse:** Plug the USB mouse into one of the NVR's USB ports.
4. **Connect to Network:** Use an Ethernet cable to connect the NVR's LAN port to your router or network switch.
5. **Power On:** Connect the power adapter to the NVR and plug it into a power outlet. The NVR will power on automatically.

## 4.2 Camera Connection and Initialization (Plug & Play)

The VIGI NVR supports Plug & Play for VIGI IP Cameras, simplifying the addition of new cameras.

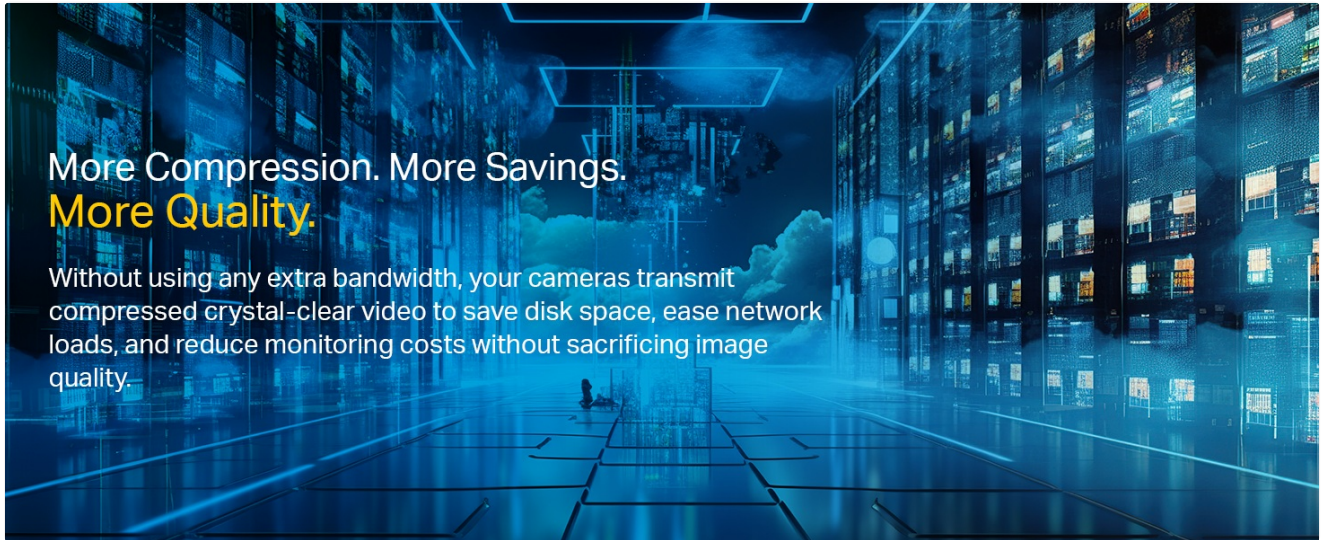


Figure 4: Plug & Play camera connection process.

1. **Simple Connection:** Connect your VIGI IP Cameras to the same network as the NVR (e.g., via a TP-Link Switch).
2. **Auto Initialize:** On the NVR interface, enable the "Auto Initialize" function. The NVR will automatically detect and add new VIGI IP Cameras.
3. **Done:** Once detected, the cameras will be activated and ready for use, making installation faster and easier.

## 5. OPERATING INSTRUCTIONS

### 5.1 Live View

The NVR allows you to view live feeds from up to 16 cameras simultaneously on a single screen.



# 4K HDMI Video Output & 16MP Decoding Capacity

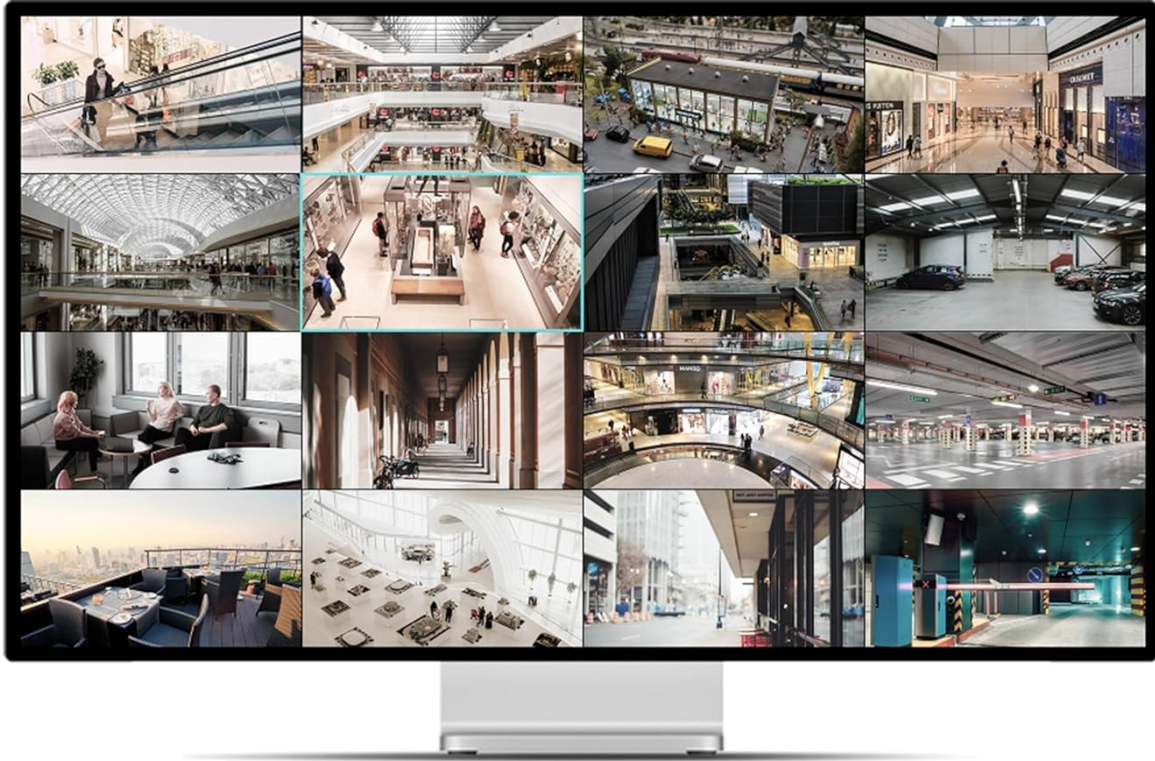


Figure 5: 16-Channel Simultaneous Live View.

Navigate the on-screen display using the connected mouse to select specific camera feeds, adjust display layouts, or access camera settings.

## 5.2 Playback

Review recorded footage efficiently with the NVR's playback features.

# 16-Channel Simultaneous Playback

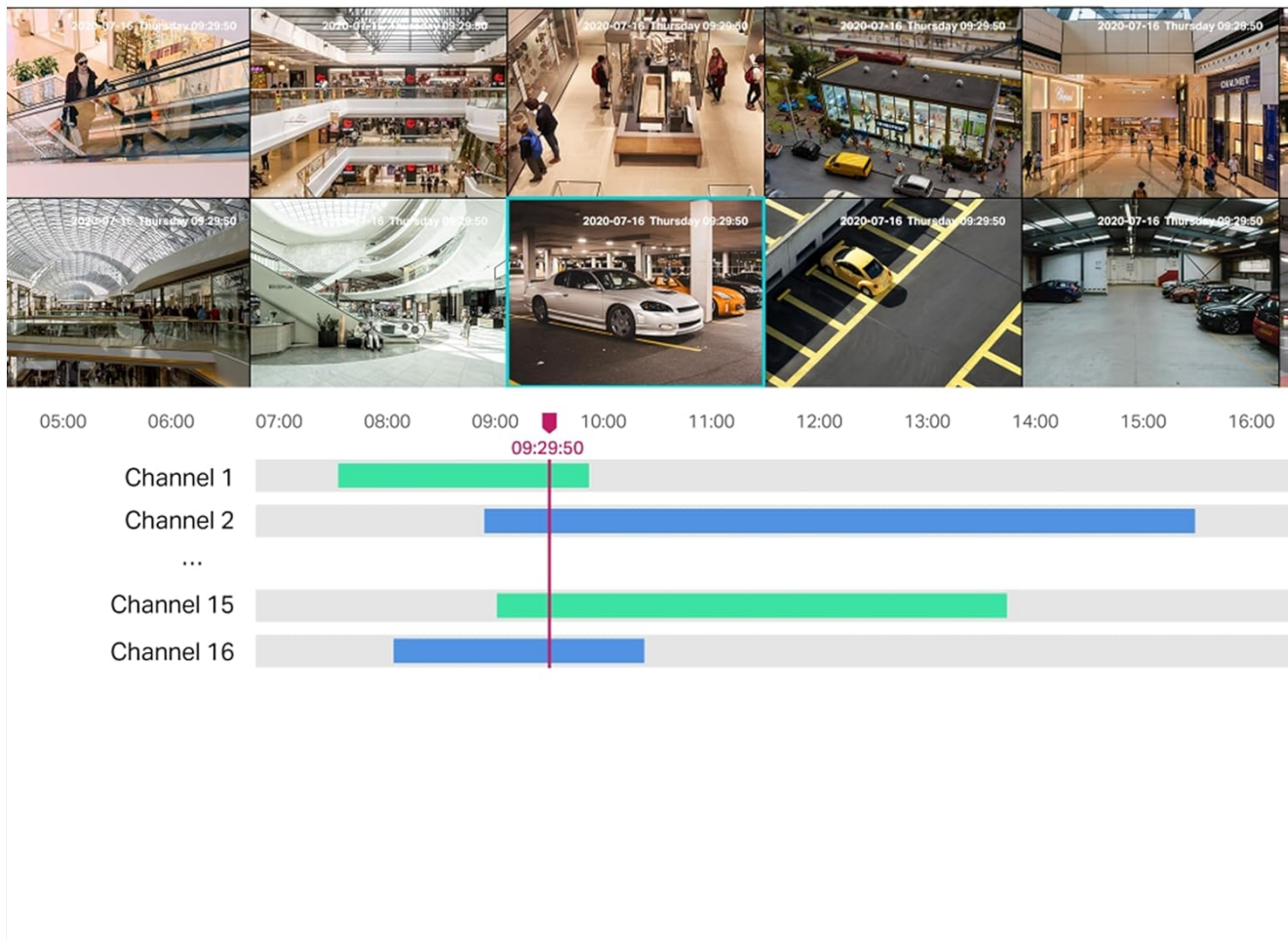


Figure 6: 16-Channel Simultaneous Playback Timeline.

Access the playback menu to select specific dates and times. The timeline displays recorded events, allowing for quick navigation. You can increase playback speed to review footage faster and easily find specific incidents.

## 5.3 Recording

The NVR supports continuous recording and efficient storage management.



## Security Never Shuts Down

VIGI NVR2016H 16 Channel Network Video Recorder

Figure 7: 24/7 Continuous Recording and Storage Capacity.

- **24/7 Continuous Recording:** The NVR automatically and continuously stores footage from connected cameras.
- **H.265+ Compression:** This advanced video compression technology reduces file sizes significantly, allowing for more footage to be stored on the same disk space while maintaining video quality.
- **Storage Capacity:** Supports up to 20 TB of storage across two HDDs (10TB per HDD).

### 5.4 Two-Way Audio

Utilize the two-way audio feature for interactive communication through connected cameras that support this function.

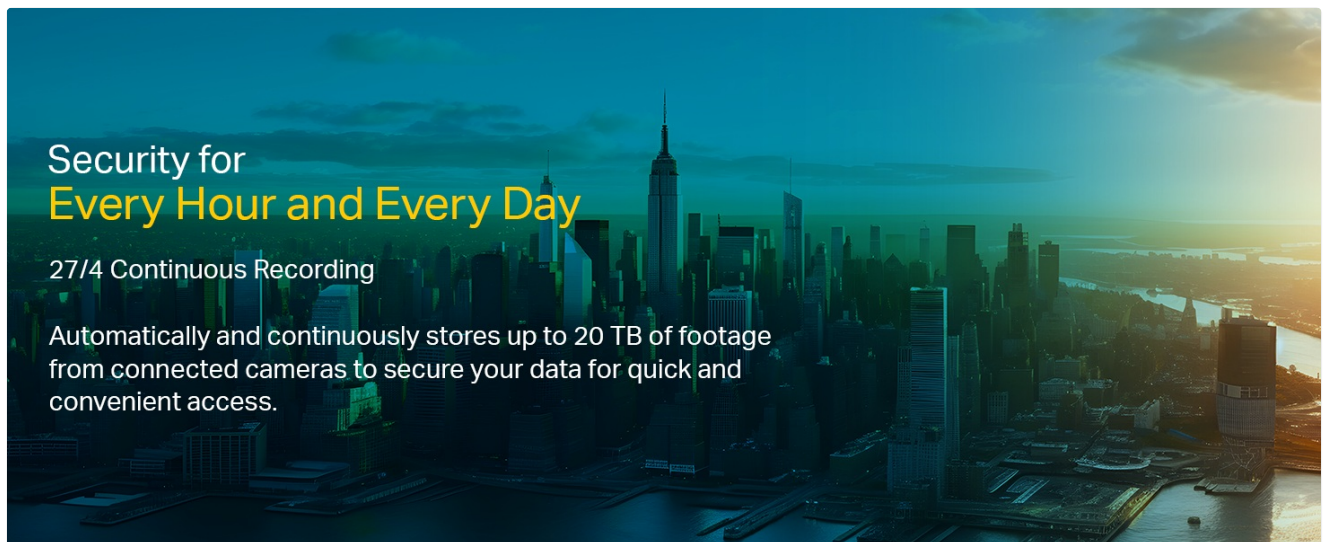


Figure 8: Two-Way Audio in action.

Connect a microphone to the AUDIO IN port and speakers to the AUDIO OUT port on the NVR to enable this feature. This allows for voice intercom support, useful for deterring intruders or communicating with individuals near the cameras.

### 5.5 Remote Monitoring

Access and manage your surveillance system remotely using the VIGI app or VIGI Security Manager software.



## Every Angle All on One Screen

### 4K HDMI Video Output & 16MP Decoding Capacity

Sharp image definition up to 8MP (4K) ensures you capture every detail. 8-ch@2MP decoding capacity allows you to enjoy more-channels live view and playback at the same time.<sup>†</sup>

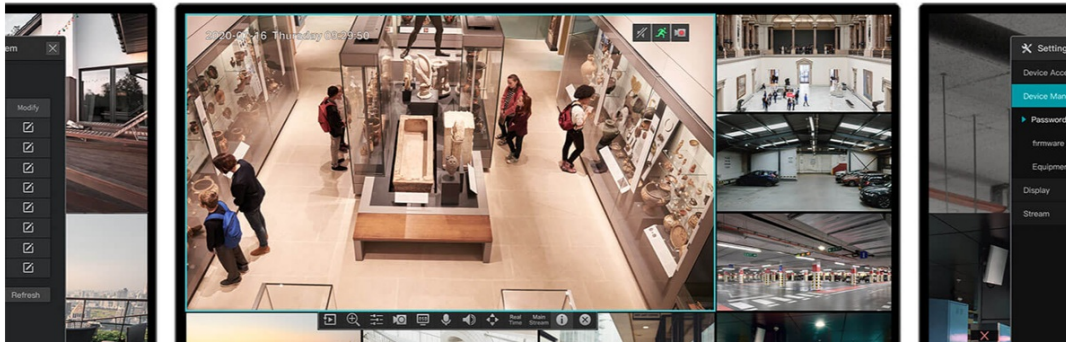


Figure 9: Remote Management via VIGI App and Software.

- **Live Views and Real-Time Alerts:** Monitor your cameras in real-time and receive instant notifications for detected events.
- **Easy & Smart Playback:** Review recorded footage conveniently from your mobile device or computer.
- **Customized Monitoring Patterns:** Configure specific monitoring schedules and alert settings.
- **Four-Way Management:** Manage your cameras flexibly via the web UI, NVR UI, VIGI app, and VIGI Security Manager.

## 6. MAINTENANCE

### 6.1 Hard Disk Drive (HDD) Management

Regularly check the status of your installed HDDs through the NVR's interface to ensure optimal recording performance. If an HDD fails or reaches its capacity, you may need to replace it or configure overwriting settings.

### 6.2 Firmware Updates

TP-Link regularly provides software updates to improve performance, add features, and enhance security. It is recommended to check for and install available firmware updates through the NVR's system settings or the TP-Link support website to ensure your device operates with the latest functionalities and security patches.

## 7. TROUBLESHOOTING

### 7.1 NVR Stuck on TP-Link Screen During Boot

If the NVR gets stuck on the TP-Link logo screen during its initial boot or after an update, this can sometimes be a minor software glitch. To resolve this:

1. **Power Off:** Disconnect the power adapter from the NVR.
2. **Access Reset Button:** Carefully open the NVR casing to locate the internal reset button.
3. **Press Reset:** Press and hold the reset button for a few seconds.
4. **Restart Device:** Reconnect the power adapter. The NVR should now boot normally.

### 7.2 Motion Detection Issues

If motion detection behaves erratically (e.g., continuous detection without apparent reason), review your camera's motion detection settings. Adjust sensitivity levels, detection zones, and schedules to optimize performance and reduce false alarms. Ensure camera firmware is up to date.

### 7.3 No LAN Cable Included

While some NVR packages may not include a LAN cable, a wired internet connection is essential for the system's proper functioning. Ensure you have a standard Ethernet cable to connect the NVR to your network.

## 8. SPECIFICATIONS

Feature	Detail
Model Number	VIGI NVR2016H
Manufacturer	TP-LINK CORPORATION LIMITED
Product Dimensions	14.2 x 36.8 x 40 cm
Item Weight	1.89 kg
Number of Channels	16
Memory Storage Capacity	20 TB (2 x 10TB HDDs)
Connectivity Technology	Wired
Compatible Devices	Camera

## 9. WHAT'S IN THE BOX

The product package includes the following items:

- VIGI Network Video Recorder
- Power Adapter
- HDD Screws
- Mouse
- Quick Installation Guide

## 10. SUPPORT AND WARRANTY

For technical support, warranty information, or further assistance, please contact TP-Link customer service.

- **Importer/Manufacturer:** TP-Link India Private Limited
- **Address:** Office No.1, Tower 2, Level 2, Raiaskaran Tech Park, Andheri Kurla Road, M.V Road, Andheri East-400072
- **Toll Free:** 1800-209-4168
- **Email:** [support.in@tp-link.com](mailto:support.in@tp-link.com)

Please refer to the official TP-Link website or the Quick Installation Guide for the most up-to-date support resources and warranty details applicable to your region.