

VINGLI Low Twin Loft Bed with Stairs

VINGLI Low Loft Bed with Stairs - Twin Size Instruction Manual

Model: Low Twin Loft Bed with Stairs (ASIN: B0CV7MSCBD)

Safety Information	Package Contents	Assembly Instructions	Usage
Guidelines	Maintenance	Troubleshooting	Specifications
			Warranty & Support

IMPORTANT SAFETY INFORMATION

WARNING: Failure to follow these warnings and instructions could result in serious injury or death.

- Do not permit children under 6 years of age to use the upper bunk.
- The surface of the mattress must be at least 5 inches (12.7 cm) below the upper edge of the guardrails.
- Always use the recommended mattress size: Twin size.
- Periodically check and ensure that all connectors are tight.
- Do not allow horseplay on or under the bed.
- Do not allow more than one person on the upper bunk.
- Use the ladder for entering and exiting the bed.
- Do not attach or hang items to any part of the bunk bed that are not designed for use with the bed; for example, but not limited to, hooks, belts, and jump ropes.
- This bed is designed to support a maximum weight of 550 LBS.
- Assembly requires at least 2 adults.

Refer to the "Important Information" section in the product details for additional safety warnings.

PACKAGE CONTENTS

Before assembly, ensure all parts and hardware are present. Refer to the included parts list in your package. If any parts are missing or damaged, contact customer support.

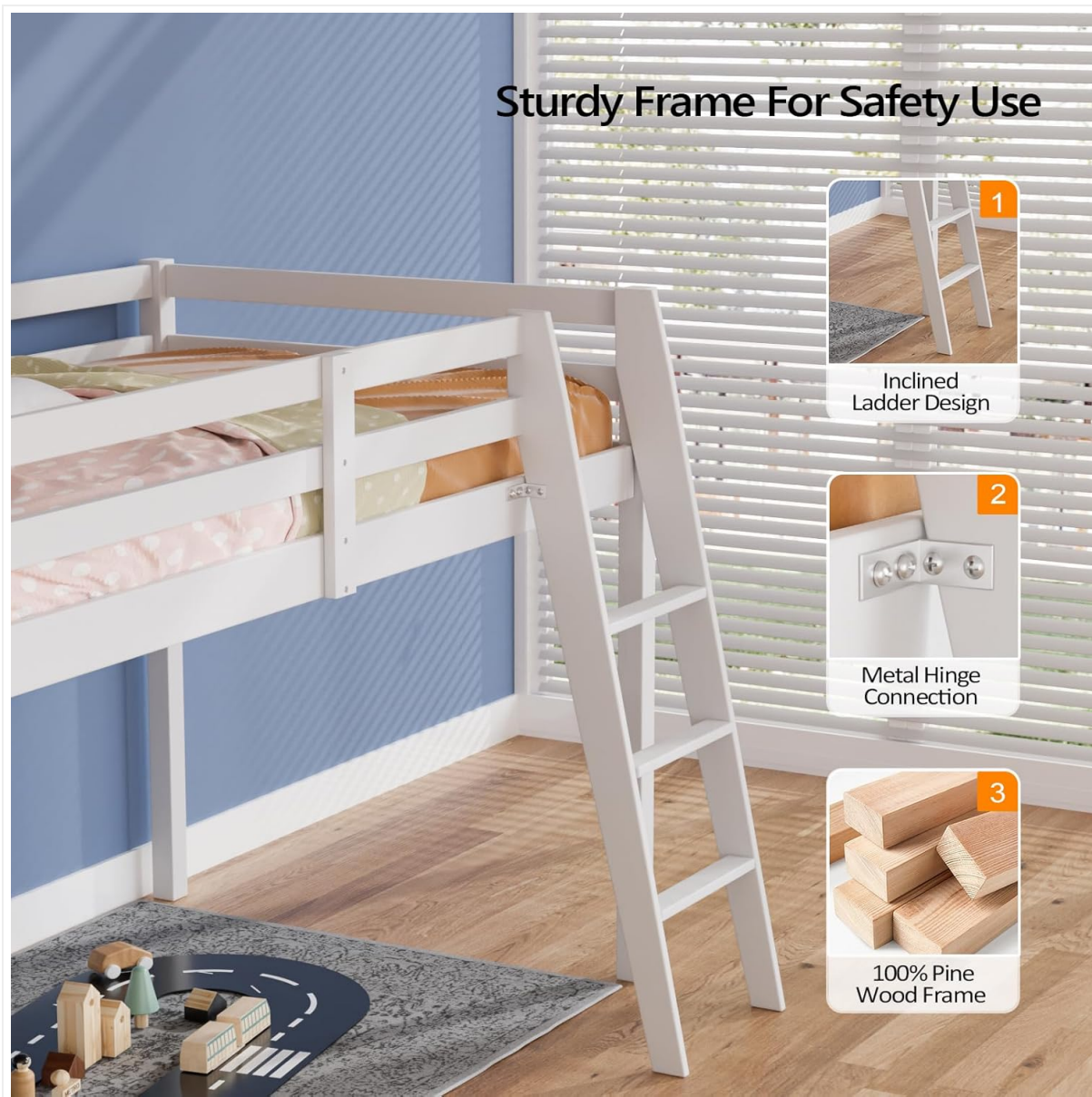


Image: Exploded view of VINGLI Low Loft Bed components, showing all wooden parts and hardware required for assembly.

ASSEMBLY INSTRUCTIONS

This VINGLI Low Loft Bed is designed for straightforward assembly. It is recommended that at least two adults participate in the assembly process. All necessary tools and hardware are included. Follow the steps carefully.

Step 1: Prepare the Area and Identify Parts

Clear a spacious area for assembly. Unpack all components and lay them out. Identify each part using the provided labels and the parts list. Ensure all hardware is accounted for.

Step 2: Assemble the Bed Frame

Begin by connecting the main frame components. Attach the side rails to the headboard and footboard using the provided bolts and Allen wrench. Do not overtighten until the entire frame is loosely assembled.

Sturdy Loft Bed

1

Sturdy Slats

Made of 100%
Wood Slats



2

Noise Free Design

Non-woven strip to
reduce noise



3

Leg with Pads

Protecting the floor
from scratch

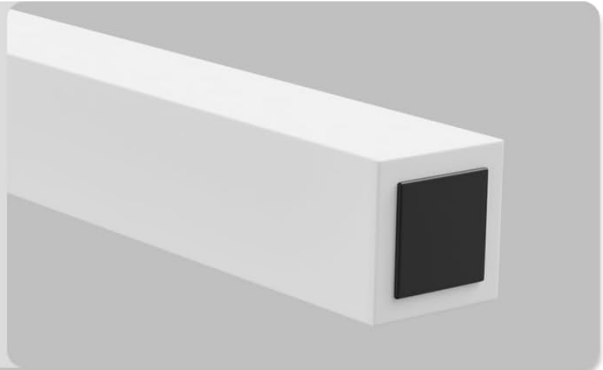


Image: Detail showing the sturdy frame construction with metal hinge connections for enhanced safety and durability.

Step 3: Install the Wood Slat Support System

Once the main frame is stable, install the 100% solid wood slats across the bed frame. These slats provide robust support for your mattress and eliminate the need for a box spring. Ensure the non-woven strip is correctly positioned to reduce noise.



Image: Close-up illustrating the sturdy wood slats, the noise-free non-woven strip, and protective leg pads.

Step 4: Attach the Guardrails and Ladder

Secure the full-length guardrails to the bed frame. These are crucial for safety, especially for the upper sleeping area. Attach the inclined ladder to the designated points on the bed frame. Ensure all connections are firm and stable.



Space Saving Loft Bed

31-inch Height Under Bed Space

- A playing area 1
- A reading area 2
- A little cozy area 3



Image: The 14-inch high full-length guardrail providing safety for the sleeping area of the low loft bed.

Step 5: Final Tightening and Inspection

Once all components are in place, go back and fully tighten all bolts and screws. Do not overtighten to avoid stripping. Perform a final inspection to ensure the bed is stable, all parts are correctly installed, and there are no loose connections.

USAGE GUIDELINES

The VINGLI Low Loft Bed is designed to maximize space in smaller rooms, providing a comfortable sleeping area above and versatile space below.

- **Under-Bed Space:** The 33-inch height from bed slat to floor offers ample room for a play area, reading nook, or additional storage.
- **Mattress Recommendation:** A mattress with a 6-inch thickness is recommended for optimal safety and comfort.
- **Weight Capacity:** The bed is constructed to support up to 550 LBS. Adhere to this limit to ensure structural integrity and safety.
- **Low Ceiling Design:** This low loft bed is ideal for rooms with lower ceilings or for younger users transitioning from a traditional bed.



Image: The versatile under-bed area of the VINGLI Low Loft Bed, suitable for various activities or storage solutions.

Design for Low Ceiling Room or Small Kids

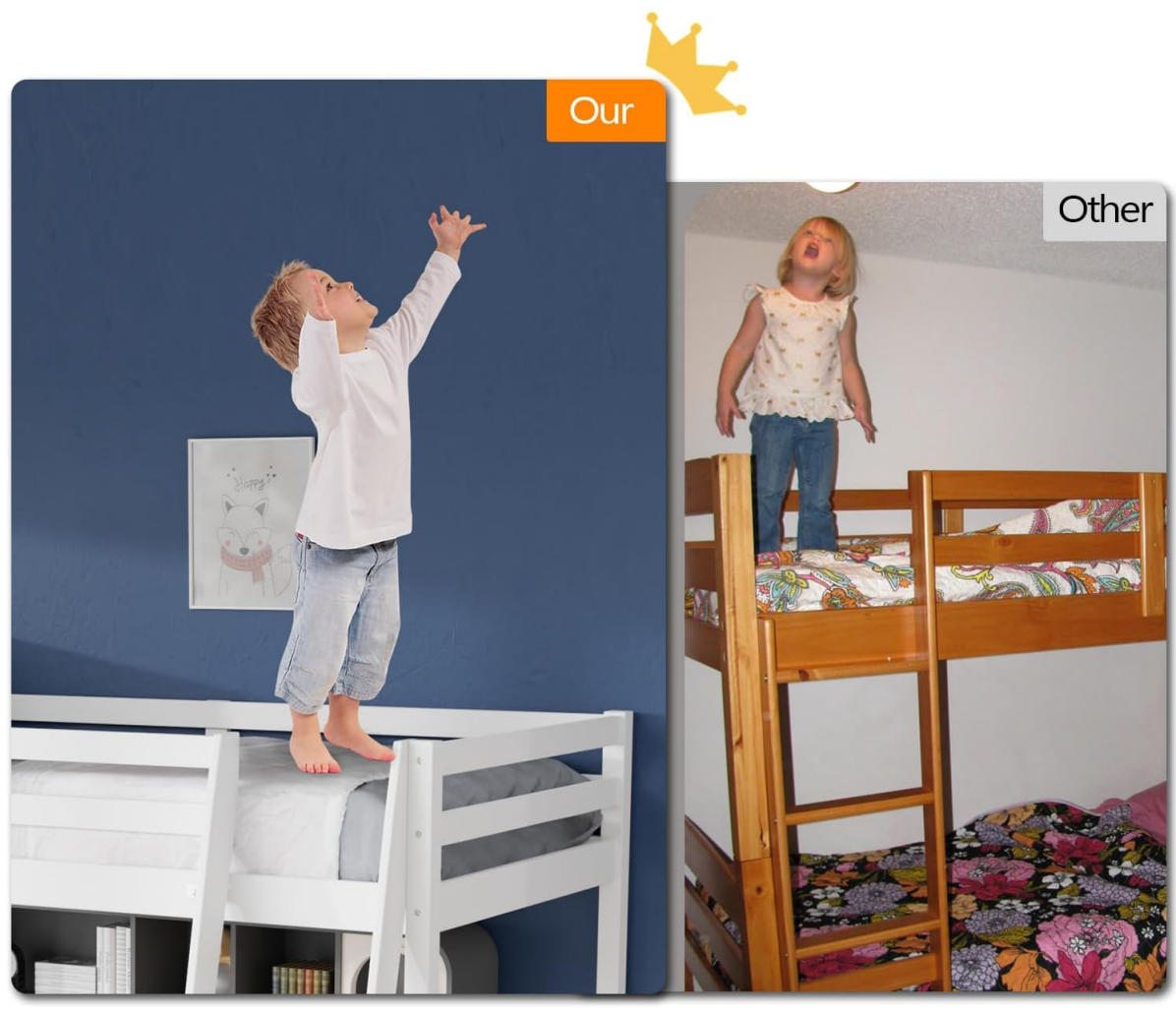


Image: A visual comparison highlighting the lower profile of the VINGLI Low Loft Bed, making it suitable for rooms with low ceilings.

MAINTENANCE

- **Cleaning:** Wipe the bed frame with a damp cloth and mild soap. Avoid harsh chemicals that may damage the wood finish.
- **Hardware Check:** Periodically (e.g., every 3-6 months) check all bolts and screws to ensure they remain tight. Retighten as necessary to maintain stability and safety.
- **Wood Care:** The bed is made of 100% pine wood. Avoid prolonged exposure to direct sunlight or extreme humidity to prevent warping or cracking.
- **Floor Protection:** The legs are equipped with pads to protect your floor from scratches. Ensure these pads remain intact.

TROUBLESHOOTING

Problem	Possible Cause	Solution
Bed feels wobbly or unstable.	Loose hardware connections.	Ensure all bolts and screws are fully tightened. Re-check all connections.
Squeaking noises during use.	Loose connections or friction between wood parts.	Tighten all hardware. Verify the non-woven strip is correctly placed on the slats to reduce friction.
Missing parts during assembly.	Packaging error or lost during unpacking.	Carefully check all packaging materials. Contact VINGLI customer service with your parts list and purchase information.

Problem	Possible Cause	Solution
Difficulty aligning parts during assembly.	Parts are not oriented correctly or overtightened prematurely.	Loosen any previously tightened bolts. Ensure parts are oriented as per the manual. Do not fully tighten until all major components are in place.

PRODUCT SPECIFICATIONS

Brand: VINGLI
Model: Low Twin Loft Bed with Stairs
ASIN: B0CV7MSCBD
Size: Low Twin
Product Dimensions (L x W x H): 78.98" x 40.55" x 47.24"
Guardrail Height: 13.97"
Ground to Item Distance (Under-Bed Clearance): 33 Inches
Weight Limit: 550 Pounds
Material: 100% Pine Wood
Finish Type: Painted (White)
Special Feature: Inclined Ladder
Assembly Required: Yes (Recommended 2 adults)
Recommended Mattress Thickness: 6 inches

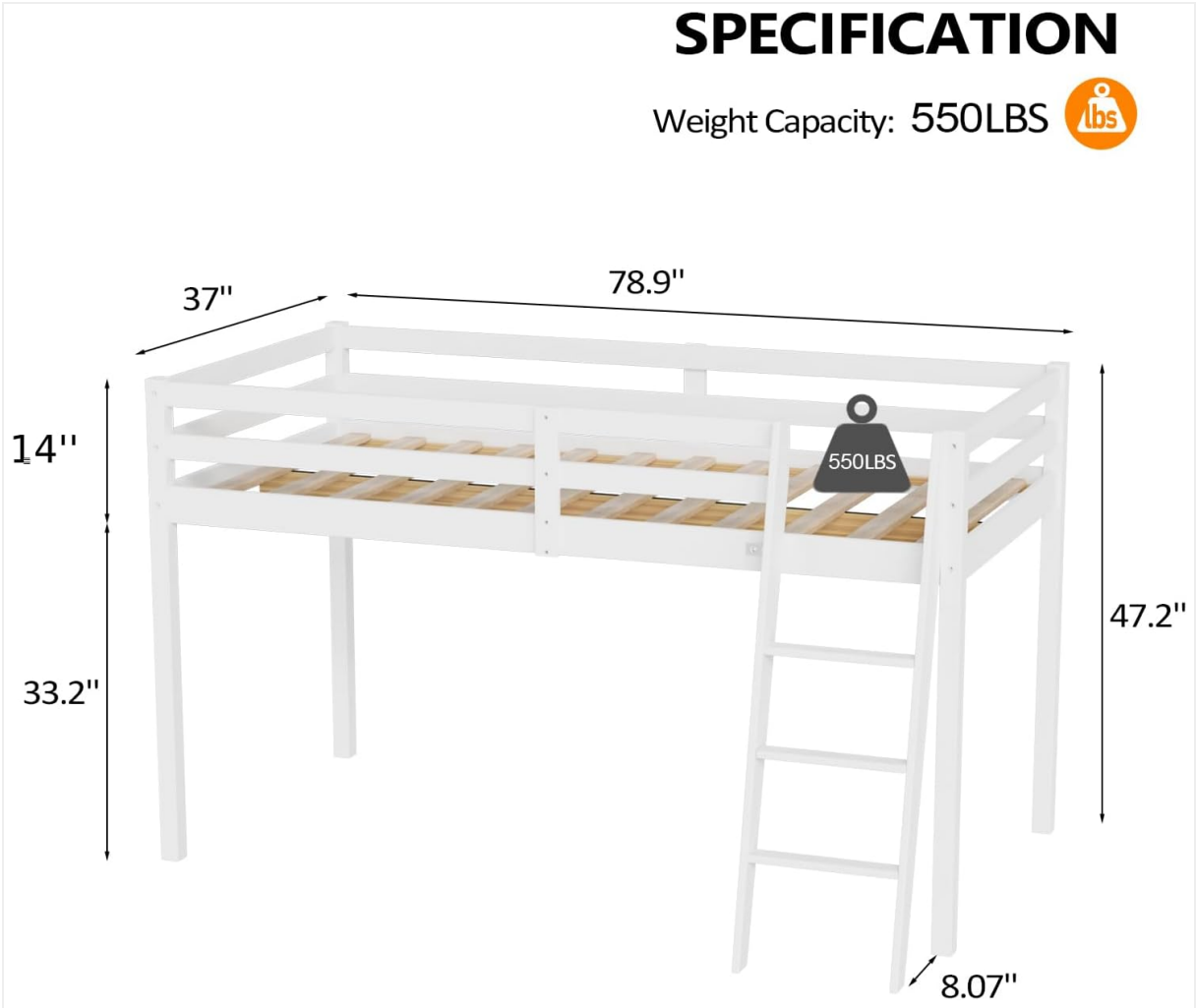


Image: Dimensional diagram of the VINGLI Low Loft Bed, illustrating length, width, height, and under-bed clearance.

WARRANTY & SUPPORT

VINGLI provides a 3-Year Quality Warranty for this product. For any questions, missing parts, or support needs, please contact VINGLI customer service directly. Please have your purchase receipt and product model information (ASIN: B0CV7MSCBD) ready when contacting support.

Contact Information: Refer to your purchase documentation or the VINGLI official website for the most current customer support contact details.