

[Manuals.plus](#) /

> [COSTWAY](#) /

> COSTWAY Baby Playpen Instruction Manual

COSTWAY B0CV7KBHCH

COSTWAY Baby Playpen Instruction Manual

Model: B0CV7KBHCH | Brand: COSTWAY

1. INTRODUCTION

Thank you for choosing the COSTWAY Baby Playpen. This playpen provides a spacious and secure environment for your child to play and explore. Designed with safety and convenience in mind, it features breathable mesh walls, a sturdy frame, and easy-to-clean materials. Please read this manual thoroughly before assembly and use to ensure proper setup and safe operation.

Important Safety Information

- Always supervise your child when they are in the playpen.
- Ensure all parts are correctly assembled and securely fastened before each use.
- Do not use the playpen if any parts are broken, torn, or missing.
- Keep children away from the playpen during assembly and disassembly.
- Do not place the playpen near open flames, heaters, or other heat sources.
- Do not leave anything in the playpen that could be used as a foothold or could pose a choking hazard.
- The playpen is designed for children aged 10 months to 6 years old.

2. PACKAGE CONTENTS

Please verify that all components listed below are present in your package before beginning assembly. If any parts are missing or damaged, please contact COSTWAY customer service.



Figure 2.1: All included components of the COSTWAY Baby Playpen.

- 1 x Baby Playpen Fabric (Oxford Cloth)
- Steel Pipes (various lengths for frame construction)
- ABS Plastic Connectors (for joining pipes)
- 4 x Pull Rings
- 50 x Ocean Balls (included for extra fun)
- Instruction Manual

3. SPECIFICATIONS

Detailed specifications for the COSTWAY Baby Playpen:

Product Dimensions	206 x 186 x 68 cm (L x W x H)
---------------------------	-------------------------------

Item Weight	6.5 kg
Material Type	Steel, ABS Plastic, 210D Oxford Cloth
Color	Blue (for this model)
Applicable Age	10 Months - 6 Years old

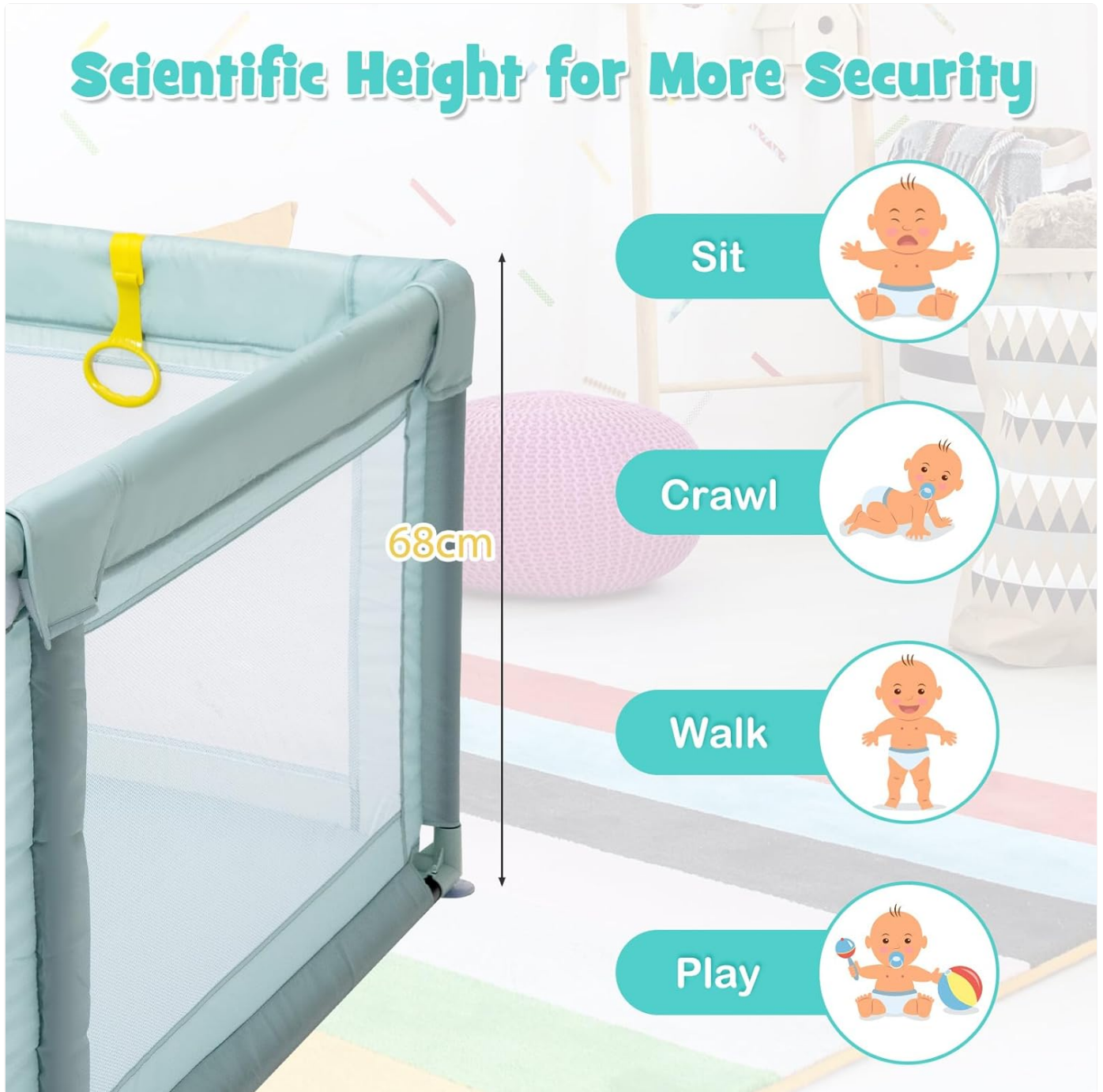


Figure 3.1: The scientific height of 68cm ensures safety and visibility.

4. SETUP AND ASSEMBLY

Follow these steps carefully to assemble your COSTWAY Baby Playpen. It is recommended that two adults assemble the playpen for easier and safer setup.

Step 1: Unpacking and Preparation

1. Unpack all components from the box and lay them out on a clean, flat surface.
2. Identify all steel pipes and ABS plastic connectors according to the parts list.

Step 2: Assembling the Frame

1. Connect the steel pipes using the ABS plastic connectors to form the base frame of the playpen. Ensure each pipe clicks securely into place within the connectors.
2. Assemble the vertical support pipes and attach them to the base frame.
3. Construct the top frame using the remaining steel pipes and connectors, then attach it to the vertical supports. Ensure all connections are firm and stable.



Figure 4.1: Close-up of frame connections and fabric attachment points.

Step 3: Attaching the Fabric

1. Carefully slide the oxford cloth fabric over the assembled frame. Ensure the mesh panels align with the sides of the frame.
2. Secure the fabric to the frame using the integrated hook and loop fasteners. Ensure all corners are covered by the protective corner covers.
3. Verify that the zipper door is properly aligned and can be opened and closed smoothly.

Premium Oxford Fabric



Child-friendly



Skin-friendly



Odorless



Figure 4.2: The premium oxford fabric is designed for safety and comfort.

Step 4: Final Checks and Accessories

1. Press down on all anti-slip suction cups at the bottom of the playpen to ensure they firmly adhere to the floor, providing maximum stability.
2. Attach the four pull rings to the top rail of the playpen. These are designed to assist your child with standing and walking practice.
3. Place the included ocean balls inside the playpen for your child's enjoyment.

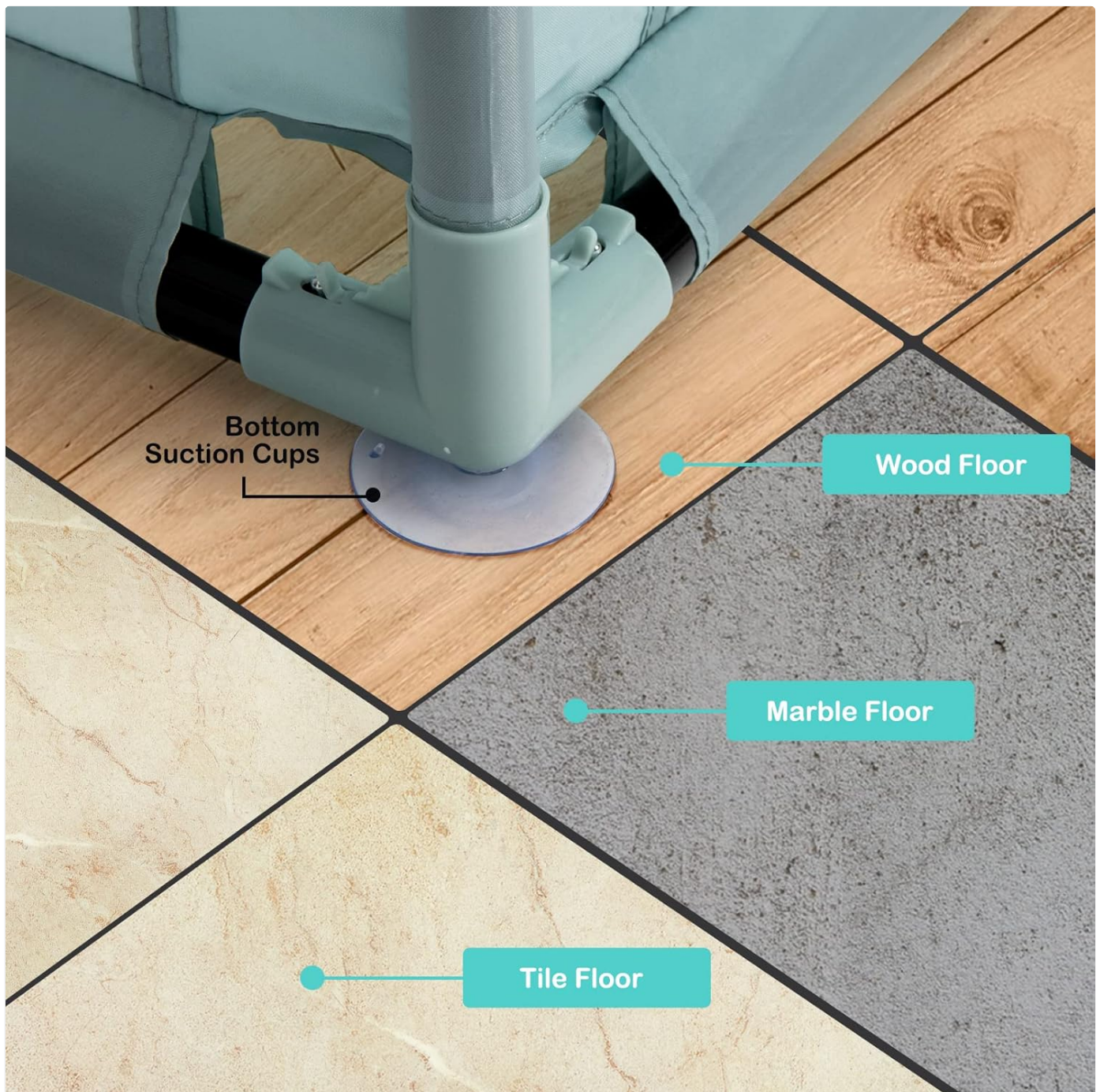


Figure 4.3: Anti-slip suction cups provide stability on different floor surfaces.

5. OPERATING INSTRUCTIONS

The COSTWAY Baby Playpen is designed for ease of use and maximum interaction with your child.

Using the Zipper Door

The playpen features a double zipper door for easy access. This allows you to comfortably enter or exit the playpen to interact with your child, or for your child to crawl in and out under supervision. Always ensure the zipper is closed when your child is inside and unsupervised.

Large Baby Playpen

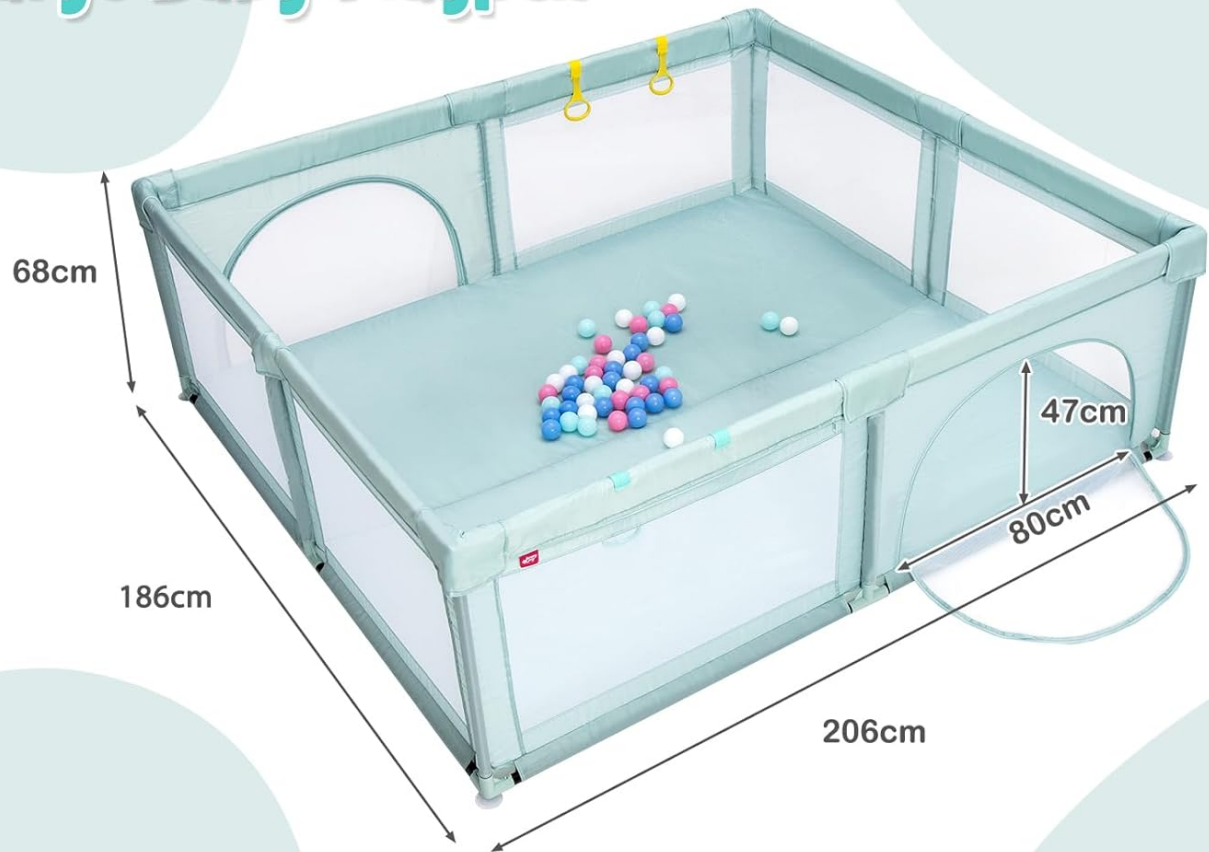


Figure 5.1: The zipper door provides convenient access.

Utilizing Pull Rings

The four included pull rings can be attached to the top rail. These rings provide a stable grip for babies learning to stand or walk, encouraging their motor skill development within a safe environment.



Perfect Playing & Learning Area



Figure 5.2: Pull rings assist in standing and walking practice.

6. MAINTENANCE AND CARE

Proper maintenance will extend the life of your playpen and ensure a hygienic environment for your child.

Cleaning

- The oxford cloth material is waterproof and easy to clean. Wipe down the fabric surfaces with a damp cloth and mild soap.
- Do not use harsh chemicals, abrasive cleaners, or bleach, as these can damage the fabric or frame.
- Allow all parts to air dry completely before reassembling or storing.
- Regularly check the mesh for any tears or damage.

Storage

- When not in use, the playpen can be disassembled for convenient storage.
- Store all components in a clean, dry place away from direct sunlight and extreme temperatures.

7. TROUBLESHOOTING

If you encounter any issues with your COSTWAY Baby Playpen, please refer to the following common problems and solutions:

Problem	Possible Cause / Solution
Playpen feels unstable or wobbly.	Ensure all steel pipes are fully inserted into the ABS connectors. Check that the anti-slip suction cups are firmly pressed onto a clean, flat floor surface.
Zipper door is difficult to open/close.	Check for any fabric caught in the zipper. Ensure the playpen frame is not twisted or uneven, which can put tension on the zipper.
Parts do not fit together during assembly.	Verify you are using the correct pipes and connectors as per the assembly diagram. Some connections may require firm pressure. If parts are genuinely misaligned or damaged, contact customer service.
Playpen is too large for the intended space.	Refer to the product dimensions (206 x 186 x 68 cm) and measure your space before purchase. This playpen is designed to be spacious.

8. WARRANTY AND SUPPORT

COSTWAY is committed to providing high-quality products. For any questions, concerns, or issues regarding your Baby Playpen, please do not hesitate to contact our customer support team. Please have your model number (B0CV7KBHCH) and purchase details ready when contacting support.

For more information and support, please visit the official COSTWAY store or contact their customer service directly. You can often find contact information on the product packaging or the retailer's website where you made the purchase.

[Visit the COSTWAY Store on Amazon](#)

