



[Manuals.plus](#) /

> [Enbizio](#) /

> Enbizio Genuine OEM Replacement Lid for Ninja Food Processor BN600, BN601, BN602 Series - Instruction Manual

Enbizio Lid

Enbizio Genuine OEM Replacement Lid for Ninja Food Processor BN600, BN601, BN602 Series

Instruction Manual

INTRODUCTION

This instruction manual provides essential information for the proper installation, operation, and maintenance of your Enbizio Genuine OEM Replacement Lid for Ninja Food Processors. Please read this manual thoroughly before use to ensure safe and effective operation.

COMPATIBILITY

This replacement lid is compatible with the following Ninja Food Processor models:

- BN600
- BN600C
- BN601
- BN601C
- BN601QB
- BN601QCN
- BN601QPL
- BN601QW
- BN602
- FP601A
- FP601CO

SAFETY INFORMATION

Observe the following safety precautions when using the replacement lid with your food processor:

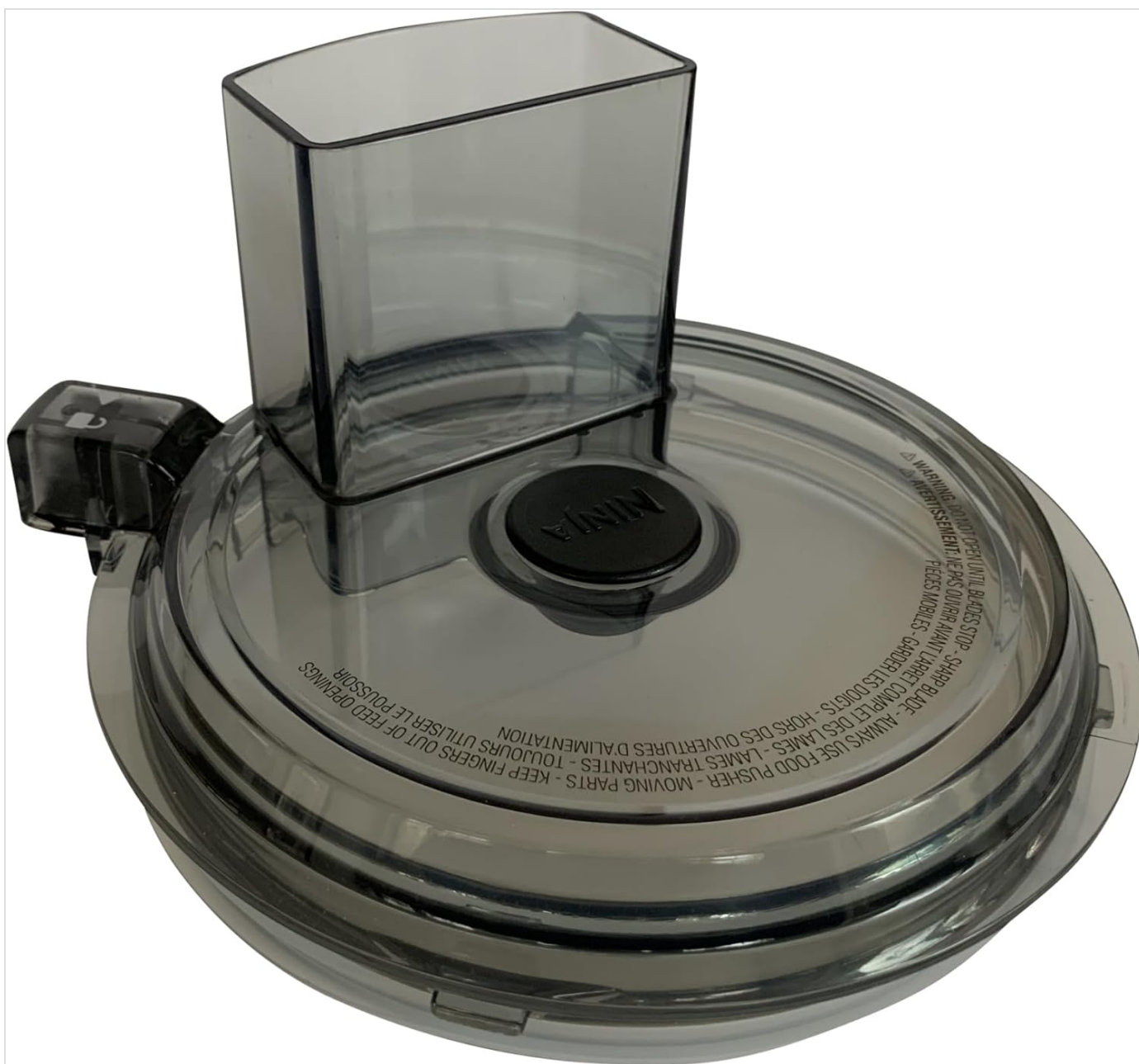
- Always ensure the lid is securely locked onto the food processor bowl before operating the appliance.
- Never operate the food processor without the lid properly in place.
- Keep hands and utensils away from moving parts during operation.

- Use the food pusher (if applicable) to guide food into the feed chute. Never use fingers or other objects.
- Do not attempt to force the lid open or closed.
- Inspect the lid for any damage, such as cracks or breaks, before each use. Do not use a damaged lid.

SETUP

Follow these steps to properly install the replacement lid:

1. Ensure the food processor base and bowl are clean and correctly assembled according to your main appliance manual.
2. Place the replacement lid onto the food processor bowl, aligning the locking tabs on the lid with the corresponding slots on the bowl.
3. Rotate the lid clockwise until it clicks securely into place. The food processor will not operate unless the lid is properly locked.
4. If your food processor uses a food pusher, insert it into the feed chute opening on the lid.



This image shows the top view of the Enbizio replacement lid for Ninja food processors. It features the clear plastic construction, the integrated feed chute, and the central Ninja brand logo. The locking tab is visible on the left side.



An angled perspective of the replacement lid, illustrating the design of the feed chute and the ergonomic locking handle. This view helps in understanding the lid's orientation and how it interacts with the food processor base.

OPERATING

Once the lid is securely locked onto the food processor bowl, you can begin processing ingredients. Add ingredients through the feed chute while the processor is running, or by removing the lid if the processor is off. Always use the food pusher to guide ingredients into the processing area. Refer to your main Ninja Food Processor manual for specific operating instructions for your appliance model.

MAINTENANCE

Cleaning

- The replacement lid is dishwasher safe. For optimal care and longevity, hand washing with warm, soapy water is recommended.
- Rinse the lid thoroughly to remove all soap residue.
- Dry the lid completely before storing or reassembling it with the food processor.

Storage

- Store the lid in a clean, dry place when not in use.



This image displays the underside of the lid, revealing the sealing gasket and the internal structure that engages with the food processor bowl. This view is helpful for proper cleaning and ensuring correct assembly.

TROUBLESHOOTING

If you encounter issues with your replacement lid, consider the following:

- **Lid will not lock:** Ensure the lid is correctly aligned with the food processor bowl and rotated fully clockwise until it clicks into its locked position. Check for any food debris or obstructions preventing proper closure.
- **Food processor will not start:** Most food processors have safety interlocks. Verify that the lid is securely locked and the bowl is correctly seated on the appliance base.
- **Lid feels loose after locking:** Double-check that the lid is fully engaged and locked. If it remains loose, inspect the lid and bowl for any signs of damage or wear that might affect the seal.

SPECIFICATIONS

Brand	Enbizio
-------	---------

Model	Lid
Compatible Models	Ninja Food Processor BN600, BN601, BN602 Series (and variants listed above)
Material	Clear Plastic
Special Feature	Dishwasher Safe
Product Dimensions	10"D x 8"W x 8"H
Item Weight	12.8 ounces



A visual representation of the replacement lid with key dimensions indicated: 10 inches in depth, 8 inches in width, and 8 inches in height. This provides precise measurements for compatibility verification.

WARRANTY AND SUPPORT

For information regarding product warranty or technical support, please refer to your original purchase documentation or contact Enbizio customer service directly. Contact details can typically be found on the product packaging or the manufacturer's official website.

