

Franke 900-SHG

Franke 900 Colorline 3-1/2" Basket Strainer - Stone Grey

USER MANUAL

Product Overview

The Franke 900 Colorline 3-1/2" Basket Strainer is designed to complement Franke granite sinks, offering a coordinated and functional solution for your kitchen. This manual provides essential information for the proper installation, operation, and maintenance of your new basket strainer.

Key Features

- **Coordinate Look:** Matches perfectly with Franke stone grey granite sinks for a seamless appearance.
- **Germ Resistant:** The material is treated with antimicrobial Sanitized, which helps to reduce bacteria and microbe growth.
- **Always Colorful:** Colorline waste kits are not coated; they feature full color throughout, and a special UV additive ensures the beautiful color won't fade over time.
- **Quality & Durability:** Made to withstand high temperatures, is scratch and stain resistant, easy to clean, and food contact safe.

Setup and Installation

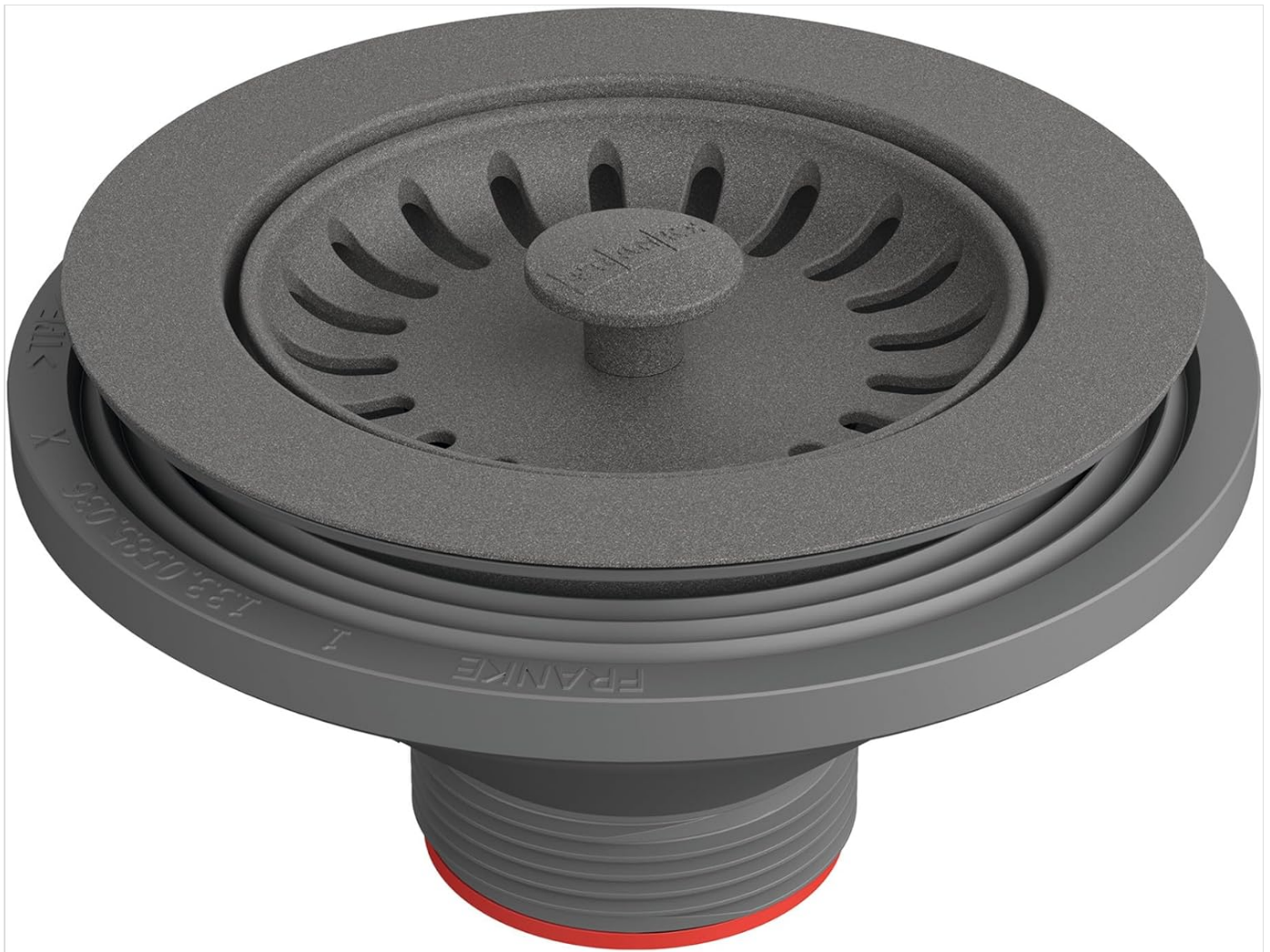
Before You Begin

Ensure you have all necessary tools and components. Review local plumbing codes and safety guidelines before starting the installation process.

Installation Steps

1. Ensure the sink drain opening is clean and free of debris.
2. Apply plumber's putty or a silicone sealant around the flange of the strainer.
3. Insert the strainer body into the sink drain opening from above.
4. From underneath the sink, place the rubber gasket, friction washer, and mounting nut onto the strainer body.

5. Tighten the mounting nut securely by hand, then use a wrench for a final snug fit. Do not overtighten.
6. Connect the tailpiece to the bottom of the strainer body.
7. Test for leaks by filling the sink with water and observing the connections.



This image shows the Franke 900 Colorline 3-1/2 inch Basket Strainer in Stone Grey, displaying its top basket and the threaded connection for installation.

Operating Instructions

Daily Use

The basket strainer is designed to prevent food particles and debris from entering your drain while allowing water to pass through. Its functionality is controlled by the position of the removable basket.

- **To Allow Water to Drain Freely:** Ensure the basket is in the open position, allowing water to flow through the perforations.
- **To Collect Debris:** Place the basket in the closed position to catch food particles and other waste.
- **To Seal the Drain:** Press the basket firmly into the drain opening to create a seal, allowing you to fill the sink with water.



A top-down view of the Franke Colorline Basket Strainer seamlessly integrated into a light-colored kitchen sink, demonstrating its aesthetic appeal when installed.



A top-down view of the Franke Colorline Basket Strainer integrated into a dark-colored kitchen sink, highlighting its matching stone grey finish.

Maintenance

Cleaning Your Strainer

Regular cleaning will maintain the appearance and functionality of your Franke Colorline Basket Strainer. The material's scratch and stain resistance, along with its antimicrobial treatment, simplifies upkeep.

- Remove the basket and empty any collected debris into the trash.
- Wash the basket and the strainer body with warm soapy water and a soft cloth or sponge.
- For stubborn stains, a non-abrasive cleaner suitable for plastic surfaces can be used.
- Rinse thoroughly with clean water.
- **Avoid:** Do not use abrasive cleaners, scouring pads, or harsh chemicals, as these can damage the finish and material integrity.

The antimicrobial Sanitized treatment helps reduce bacteria growth, but regular cleaning is still recommended for optimal hygiene.

Troubleshooting

Common Issues and Solutions

Issue	Possible Cause	Solution
Slow Draining	Debris accumulation in the basket or drain pipe.	Remove the basket and clear any debris. If the issue persists, check the drain pipe for blockages.
Leaking	Improper installation or loose connections.	Check the mounting nut and tailpiece connection for tightness. Ensure plumber's putty or sealant was applied correctly during installation.
Odor from Drain	Food particles trapped in the strainer or drain.	Thoroughly clean the basket and strainer body. Run hot water down the drain to flush any remaining particles.

Specifications

Product Specifications

Attribute	Detail
Brand	Franke
Model Number	900-SHG
Color	Stone Grey
Material	Plastic
Product Dimensions	4.94 x 4.94 x 2.56 inches
Number of Items	1
UPC	612986090748
Included Components	Sink Strainer

Warranty and Support

Warranty Information

This Franke product comes with a 1-year warranty. For specific details regarding warranty coverage, terms, and how to make a claim, please refer to the official Franke warranty documentation provided with your purchase or visit the Franke official website.

Customer Support

For further assistance, technical support, or to inquire about replacement parts, please visit the official Franke website or contact their customer service department. You can typically find contact information on the Franke website.

Official Franke Website: www.franke.com

