

## Frigga M2D

# Frigga M2D Reusable USB Temperature Data Logger

Model: M2D

## INTRODUCTION

The Frigga M2D is a reusable USB temperature data logger designed for accurate and reliable temperature monitoring. It features an advanced internal sensor with a measuring range of -30°C to +70°C (-22°F to +158°F) and a memory capacity of up to 14,400 readings. This device is suitable for various applications requiring precise temperature recording, such as cold chain logistics, food storage, pharmaceutical monitoring, and laboratory use.

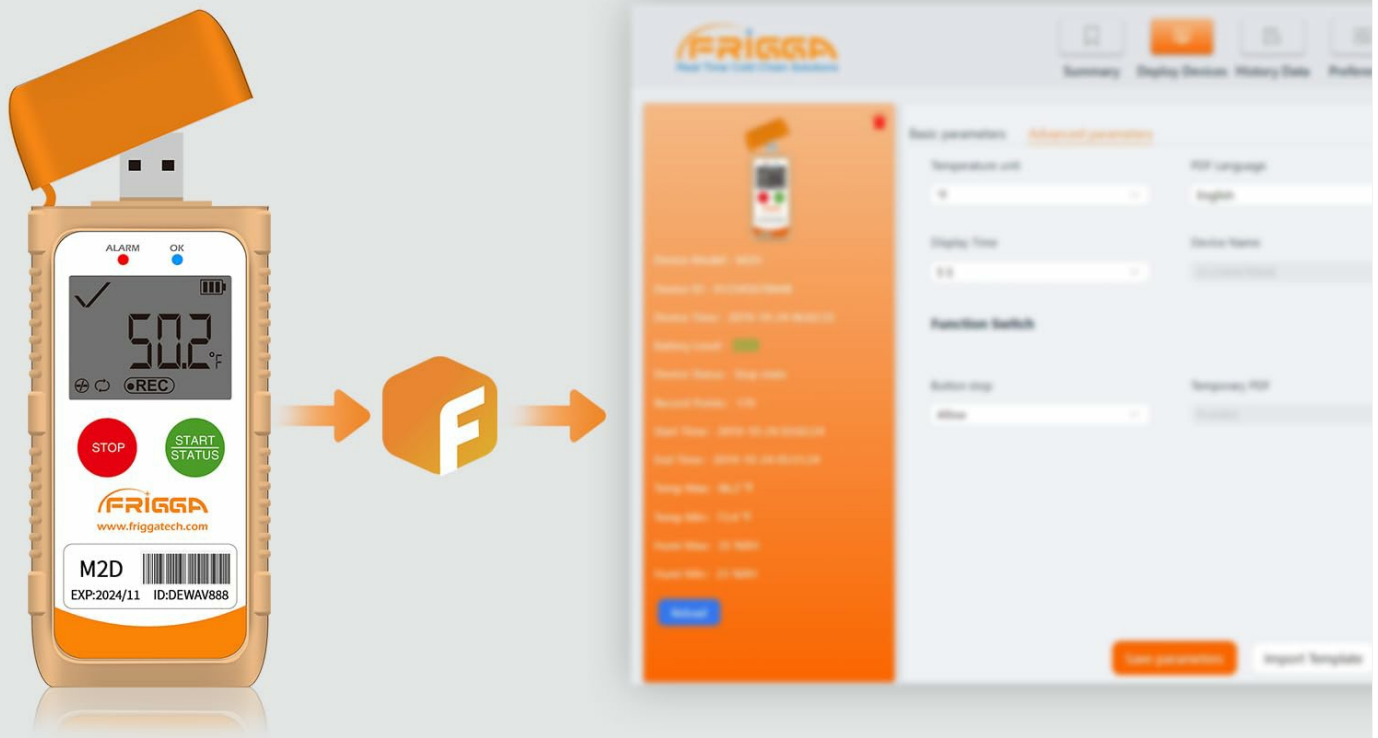
## SETUP

Before initial use, the Frigga M2D data logger requires configuration using the complimentary Frigga Data Software. This software is compatible with Windows and Mac OS and allows you to set logging conditions such as delayed start, logging intervals, temperature units (Fahrenheit/Celsius), time zones, and temperature alarm ranges. The software can be downloaded from the official Frigga website.

### Important Configuration Notes:

- Ensure the 'Stop' button function is set to 'Allow' in the software settings.
- Ensure the 'Restart' option is set to 'Allow' for subsequent uses.
- The device is factory-set with a **30-minute start delay**. During this delay, the logger will not immediately begin recording after pressing the start button. An hourglass icon will appear on the display, and the blue light will flash every 10 seconds. This delay allows the logger to acclimate to its environment before recording begins, preventing initial out-of-range readings.

# Parameter Settable via Frigga Data Center



**Temperature unit switch**



**Settable alarm ranges**



**Data storage & analysis**



**Chart comparison multiple devices**

Image: The Frigga M2D data logger connected to a computer, illustrating the software interface used for setting various parameters like temperature units, alarm ranges, and logging intervals.

## OPERATING INSTRUCTIONS

### Starting and Stopping Recording

- To **start** recording, press the 'START/STATUS' button. The device will begin logging data after any configured start delay.
- To **stop** recording, press the 'STOP' button.

### Viewing Real-time Data

The integrated LCD screen displays real-time temperature readings, alarm status, and statistical information. You can switch between Fahrenheit and Celsius units directly on the device.

### LED Alarm Indicator

The device features an LED alarm function that activates if the recorded temperature exceeds or falls below the pre-set thresholds configured in the software.

## Data Retrieval

After recording is complete, plug the USB connector of the data logger into any computer. The device will automatically generate PDF and CSV reports, which can be accessed directly without requiring additional software or driver installation. The PDF report provides a summary and graph, while the CSV file contains raw data points.



Image: The Frigga M2D data logger connected via USB to a computer, demonstrating its ability to auto-generate PDF and CSV reports for data analysis.

## MAINTENANCE

### Battery Replacement

The Frigga M2D uses a CR2450 battery. When the battery indicator shows low power, replace the battery to ensure continuous operation and data integrity. Follow these steps:

1. Locate the battery compartment on the back of the device.
2. Use a coin or a flat tool to twist the battery cover counter-clockwise to open.

3. Remove the old CR2450 battery.
4. Insert a new CR2450 battery with the positive (+) side facing up.
5. Replace the battery cover and twist clockwise to secure.



# How to replace the battery?

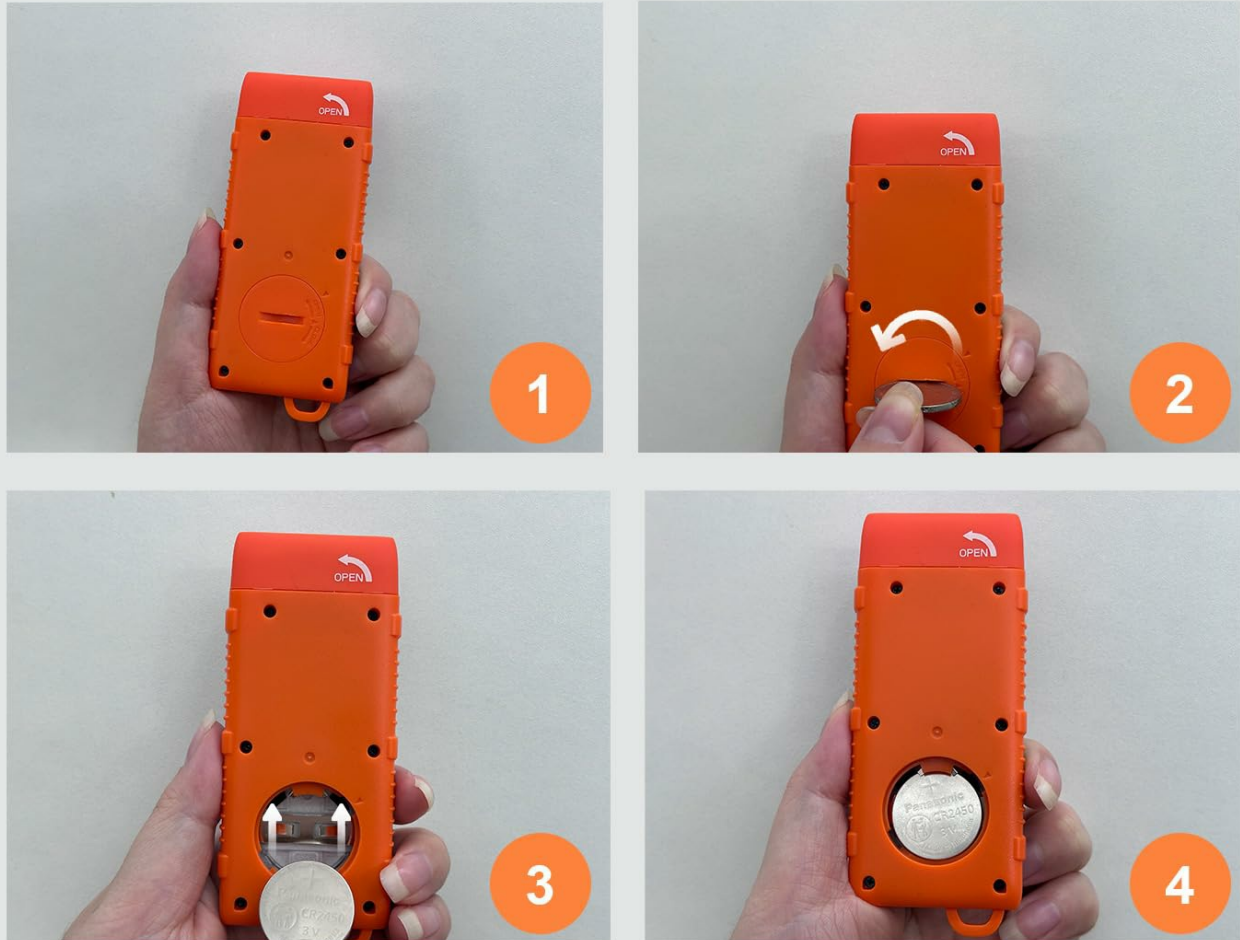


Image: A step-by-step visual guide demonstrating the process of replacing the CR2450 battery in the Frigga M2D data logger.

## Cleaning

Wipe the device clean with a soft, damp cloth. Do not use abrasive cleaners or immerse the device in water, despite its IP65 rating, to prevent damage to the USB port or internal components.

## TROUBLESHOOTING

- **Device does not start recording immediately:** The device has a factory-set 30-minute start delay. Wait for this period to elapse. An hourglass icon and a flashing blue light indicate the delay is active. Ensure the 'Start Delay' setting in the Frigga Data Software is configured as desired.
- **Software issues (e.g., blank window, crashes):** If the Frigga Data Software does not open correctly (e.g., a blank window

appears), try closing the process via Task Manager and restarting the software. Ensure your operating system (Windows/Mac OS) is updated and meets the software's requirements.

- **Inaccurate or unexpected readings:** Ensure the device has acclimated to the environment before starting a recording session. Verify that the temperature alarm ranges and logging intervals are correctly set in the Frigga Data Software.
- **Device not recognized by computer:** Ensure the USB connection is secure. Try plugging the device into a different USB port or another computer.
- **Short battery life:** The initial battery might have a reduced charge. Replace the CR2450 battery with a new one if you experience unusually short operational periods.

If you encounter persistent issues, please refer to the support section for contact information.

SPECIFICATIONS

Model	M2D
Measurement Range	-30°C to +70°C (-22°F to +158°F)
Accuracy	±0.5°C (-20°C to +40°C); ±1°C for other ranges
Memory Capacity	14,400 readings
Battery	CR2450 (replaceable)
Connectivity	USB
Display Type	Digital LCD
Waterproof Grade	IP65
Dimensions (Approx.)	11.2 cm (4.41 in) Height x 4.7 cm (1.85 in) Width
Special Features	Alarm, Fast Reading System, High Accuracy, Low Battery Indicator



# Product parameter



- **Measurement Range**  
-30°C ~ 70°C ( -22°F ~ 158°F)
- **Accuracy Range**  
-0.5°C/31.1°F & 0.5°C/32.9°F  
(-20°C/-4°F ~ +40°C/104°F)  
1°C/33.8°F & -1°C/30.2°F for  
other range
- **Memory Capacity**  
Max 14400 readings

Image: A visual representation of the Frigga M2D data logger, highlighting its physical dimensions and core technical specifications.

## WARRANTY AND SUPPORT

The Frigga M2D data logger comes with a warranty. Details regarding the warranty period and terms can be found on the warranty card included with your product. You can also scan the QR code on the warranty card for access to the user manual and additional resources.

For technical assistance or any inquiries, 24/7 technician support is available via email. Please refer to the contact information provided on the warranty card or the official Frigga website.

A calibration certificate can be exported by connecting the device to your computer.

