

Yaheetech YT-00134195

Yaheetech 10FT Solar Offset Umbrella Instruction Manual

Model: YT-00134195

Brand: Yaheetech

SETUP INSTRUCTIONS

1. Unboxing and Component Identification

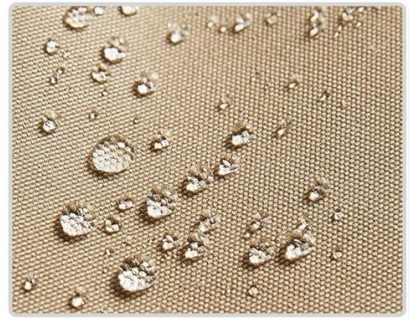
Carefully unpack all components from the packaging. Ensure all parts listed in the packing list are present. It is recommended to lay out all parts on a clean, flat surface before beginning assembly.



Handy Cranking System



Ventilation Window



Water-Resistant Material



Sleeves for Fixing Ribs



Supportive Ribs

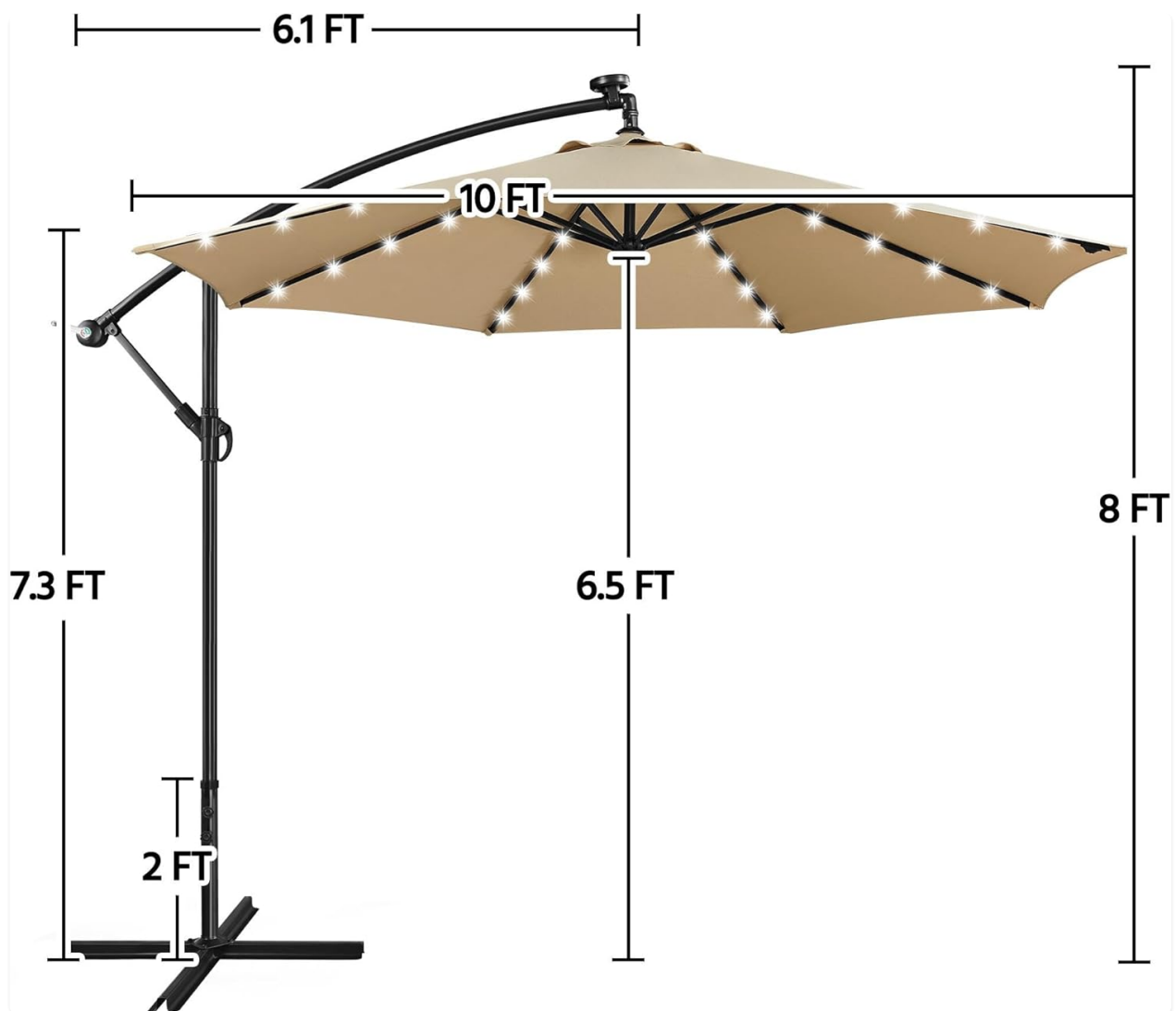


Solar LED lights Switch

This image displays the main components of the umbrella as they appear after unboxing, including the folded canopy, the main pole, the curved arm, and the cross base pieces. A small solar panel is also visible.

2. Base Assembly

Assemble the cross base by connecting the two base pieces. Secure them using the provided hardware. This cross base is designed to fit into a separate filling or self-weight base stand (not included with this product) for stability.



The diagram illustrates the assembled cross base, which forms the foundation for the umbrella. The base is designed to be weighted down by separate base weights or sandbags for optimal stability.

3. Attaching the Umbrella Pole to the Base

Insert the main pole into the assembled cross base. Ensure it is securely fastened according to the instructions. The pole features a handy cranking system for easy operation.



This image shows the complete umbrella structure, with the main pole securely attached to the cross base. The curved arm extends from the pole, supporting the canopy.

4. Connecting Solar Panel and LED Lights

Locate the solar panel at the top of the umbrella arm. Connect the wiring from the LED lights embedded in the umbrella ribs to the solar panel. Ensure the connection is secure. The solar panel charges the 32 LED lights during the day for nighttime illumination.



**Stronger brightness
& 6-8 hours battery life**



**A handy switch on the pole
controls the lights**

This image highlights the solar panel located at the top of the umbrella arm, responsible for charging the integrated LED lights. A switch on the pole allows for manual control of the lights.

Your browser does not support the video tag.

This official product video demonstrates the unboxing, assembly, and key features of the Yaheetech 10FT Solar Offset Umbrella, including the solar-powered LED lights and the cranking mechanism.

OPERATING INSTRUCTIONS

1. Opening and Closing the Umbrella

To open the umbrella, use the handy cranking system located on the main pole. Turn the crank clockwise to extend the canopy. To close, turn the crank counter-clockwise until the canopy is fully retracted.



Please move the fixing sleeve before adjusting the angle of the umbrella, and then clamp it into the fixed position after adjusting



1

2

Feel free to tilt the canopy to your wanted position



Open/ close the parasol with the hand crank

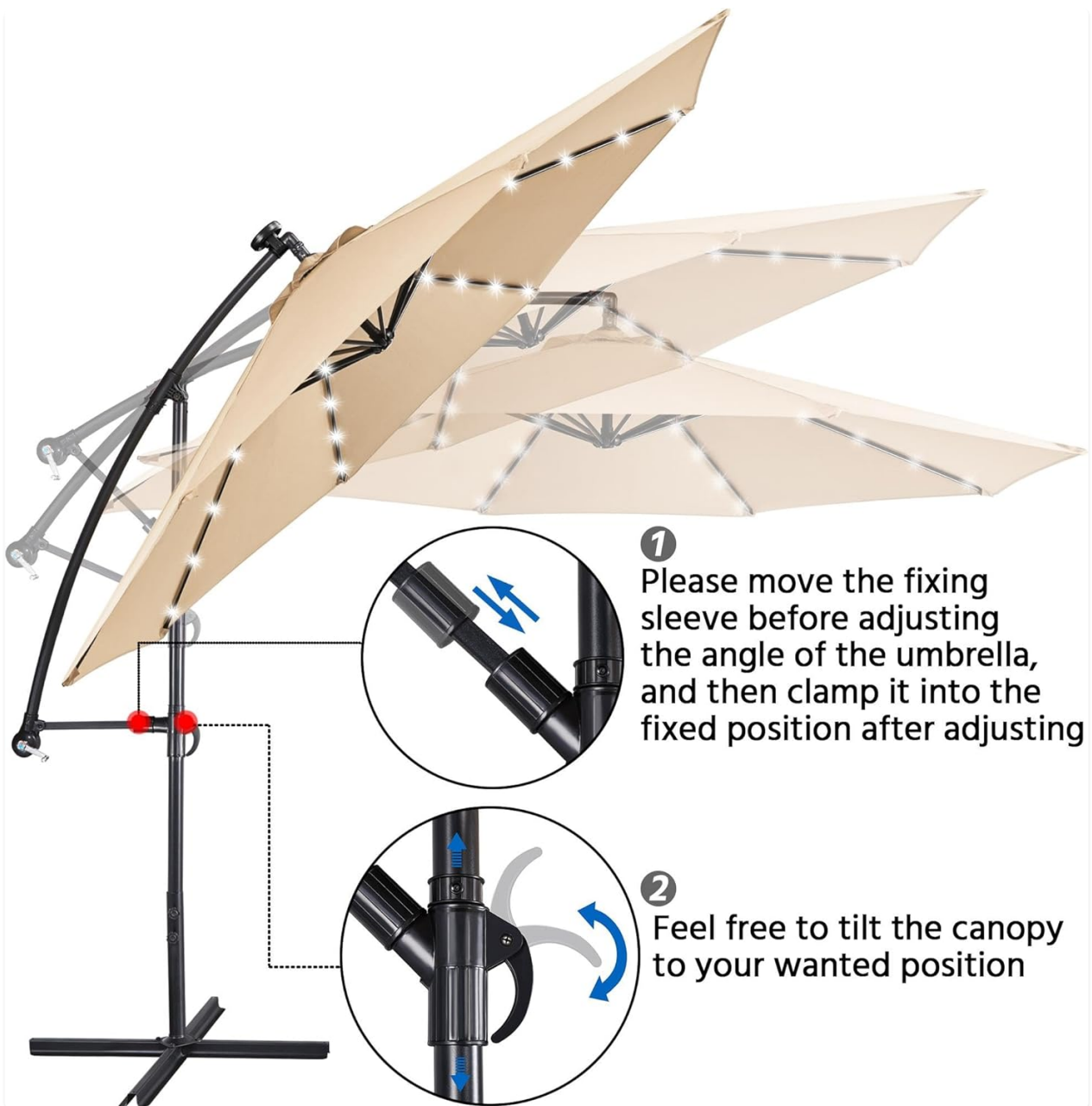


3

This visual guide demonstrates the simple crank mechanism used to effortlessly open and close the umbrella canopy. It also shows how to adjust the umbrella's angle.

2. Adjusting Canopy Angle and Tilt

The umbrella features a mechanism to adjust the canopy's angle and tilt. Loosen the fixing sleeve on the main pole, adjust the umbrella to your desired position, and then clamp it into the fixed position. This allows for optimal shade coverage throughout the day.



1 Please move the fixing sleeve before adjusting the angle of the umbrella, and then clamp it into the fixed position after adjusting

2 Feel free to tilt the canopy to your wanted position

This image provides a clear visual of how to manipulate the umbrella's angle and tilt using the fixing sleeve and the main pole mechanism, ensuring flexible shade positioning.

3. Using the LED Lights

The 32 solar-powered LED lights are designed to illuminate automatically at dusk if the solar panel has received sufficient sunlight during the day. There is also a manual on/off switch located on the pole for controlling the lights.



This image demonstrates the dual functionality of the umbrella, offering shade during daylight hours and ambient lighting from its 32 solar-powered LED lights after sunset.



A beautiful night scene showcasing the umbrella's LED lights, which provide a soft glow, perfect for evening gatherings on a patio or deck.

MAINTENANCE

1. Cleaning the Canopy

To clean the polyester fabric canopy, use a mild soap solution and a soft brush or cloth. Rinse thoroughly with clean water and allow to air dry completely before closing or storing. Avoid harsh chemicals or abrasive cleaners.

2. Pole and Base Care

Wipe down the powder-coated iron pole and base with a damp cloth regularly to prevent rust and maintain appearance. Ensure all moving parts of the cranking system are free of debris.

3. Winter Storage

During off-season or periods of strong winds, it is recommended to close the umbrella and secure it with a cover. For prolonged storage, disassemble the umbrella and store it in a dry, protected area to extend its lifespan.

TROUBLESHOOTING

1. LED Lights Not Working

- **Check Solar Panel:** Ensure the solar panel is clean and receiving direct sunlight for at least 6-8 hours daily.
- **Check Switch:** Verify the manual on/off switch on the pole is in the 'ON' position.
- **Battery:** The umbrella uses 1 Lithium Ion battery (included). If lights are consistently dim or not working after sufficient charging, the battery may need replacement.

2. Umbrella Instability

- **Base Weight:** This umbrella requires a separate weighted base (not included) for stability. Ensure your base is adequately filled with sand or water to prevent tipping, especially in windy conditions.
- **Secure Assembly:** Double-check all screws and connections on the cross base and pole to ensure they are tightened securely.

3. Difficulty Cranking

- **Obstructions:** Inspect the cranking mechanism and the umbrella ribs for any obstructions or debris.
- **Lubrication:** Apply a silicone-based lubricant to the moving parts of the cranking system if it feels stiff.

SPECIFICATIONS






Feature	Detail
Brand	Yaheetech
Model Number	YT-00134195
Canopy Diameter	114 inches (approx. 10FT)
Material	Polyester Fabrics, Powder-coated Iron
LED Lights	32 Solar-powered LEDs (4 per rib)
Power Source	Solar Energy (1 Lithium Ion battery included)
Item Weight	29.5 pounds
Product Dimensions	113.78 x 113.78 x 96.65 inches
Base Type	Cross Base (requires additional weight, not included)

WARRANTY AND SUPPORT

For warranty information or product support, please refer to the original purchase documentation or contact Yaheetech customer service directly. Keep your proof of purchase for any warranty claims.

Contact Information: Please visit the official [Yaheetech Store on Amazon](#) for the latest support details and contact options.

Related Documents - YT-00134195

<div><div>Yaheetech</div><div>614812/614813</div><div></div><div><div>1</div><div><div><div>1. Please read the safety warnings and the safety instructions carefully.</div><div>2. Please read the assembly instructions carefully before assembly.</div><div>3. Please read the safety warnings and the safety instructions carefully.</div><div>4. Please read the safety warnings and the safety instructions carefully.</div><div>5. Please read the safety warnings and the safety instructions carefully.</div></div></div></div></div> <td><p>Yaheetech Ergonomic Gaming Chair Installation Guide</p><p>Step-by-step instructions and parts list for assembling your Yaheetech ergonomic gaming chair, featuring massage lumbar support and adjustable footrest. Ensure proper setup for optimal comfort and performance.</p></td>	<p>Yaheetech Ergonomic Gaming Chair Installation Guide</p> <p>Step-by-step instructions and parts list for assembling your Yaheetech ergonomic gaming chair, featuring massage lumbar support and adjustable footrest. Ensure proper setup for optimal comfort and performance.</p>
<div><div>Yaheetech</div><div>592603(6R&7.5R)&592607(6R&7.5R)</div><div></div><div><div>1</div><div><div><div>1. Please read the safety warnings and the safety instructions carefully.</div><div>2. Please read the assembly instructions carefully before assembly.</div><div>3. Please read the safety warnings and the safety instructions carefully.</div><div>4. Please read the safety warnings and the safety instructions carefully.</div><div>5. Please read the safety warnings and the safety instructions carefully.</div></div></div></div></div> <td><p>Yaheetech 592603 & 592607 Artificial Christmas Tree Assembly and Operation Guide</p><p>Comprehensive guide for assembling and operating the Yaheetech 592603 and 592607 artificial Christmas trees, featuring multicolor LED lights and easy setup instructions.</p></td>	<p>Yaheetech 592603 & 592607 Artificial Christmas Tree Assembly and Operation Guide</p> <p>Comprehensive guide for assembling and operating the Yaheetech 592603 and 592607 artificial Christmas trees, featuring multicolor LED lights and easy setup instructions.</p>
<div><div>Yaheetech</div><div>593027/593028</div><div></div><div><div>1</div><div><div><div>1. Please read the safety warnings and the safety instructions carefully.</div><div>2. Please read the assembly instructions carefully before assembly.</div><div>3. Please read the safety warnings and the safety instructions carefully.</div><div>4. Please read the safety warnings and the safety instructions carefully.</div><div>5. Please read the safety warnings and the safety instructions carefully.</div></div></div></div></div> <td><p>Yaheetech 593027/593028 Assembly Instructions and User Guide</p><p>Detailed assembly instructions and user guide for Yaheetech products 593027 and 593028, covering safety, parts, assembly steps, and maintenance for home furniture.</p></td>	<p>Yaheetech 593027/593028 Assembly Instructions and User Guide</p> <p>Detailed assembly instructions and user guide for Yaheetech products 593027 and 593028, covering safety, parts, assembly steps, and maintenance for home furniture.</p>
<div><div>Yaheetech</div><div>592626(48in)</div><div></div><div><div>1</div><div><div><div>1. Please read the safety warnings and the safety instructions carefully.</div><div>2. Please read the assembly instructions carefully before assembly.</div><div>3. Please read the safety warnings and the safety instructions carefully.</div><div>4. Please read the safety warnings and the safety instructions carefully.</div><div>5. Please read the safety warnings and the safety instructions carefully.</div></div></div></div></div> <td><p>Yaheetech 592626 (48in) Artificial Christmas Wreath Assembly Instructions</p><p>This document provides comprehensive assembly instructions for the Yaheetech 592626 (48in) artificial Christmas wreath. It covers general safety warnings, a parts list, step-by-step assembly guidance, and information on how to contact customer support.</p></td>	<p>Yaheetech 592626 (48in) Artificial Christmas Wreath Assembly Instructions</p> <p>This document provides comprehensive assembly instructions for the Yaheetech 592626 (48in) artificial Christmas wreath. It covers general safety warnings, a parts list, step-by-step assembly guidance, and information on how to contact customer support.</p>
<div><div>Yaheetech</div><div>592605(7.5R)</div><div></div><div><div>1</div><div><div><div>1. Please read the safety warnings and the safety instructions carefully.</div><div>2. Please read the assembly instructions carefully before assembly.</div><div>3. Please read the safety warnings and the safety instructions carefully.</div><div>4. Please read the safety warnings and the safety instructions carefully.</div><div>5. Please read the safety warnings and the safety instructions carefully.</div></div></div></div></div> <td><p>Yaheetech 7.5ft Artificial Christmas Tree Assembly Instructions</p><p>A comprehensive guide for assembling the Yaheetech 7.5ft artificial Christmas tree, including multilingual instructions and safety precautions.</p></td>	<p>Yaheetech 7.5ft Artificial Christmas Tree Assembly Instructions</p> <p>A comprehensive guide for assembling the Yaheetech 7.5ft artificial Christmas tree, including multilingual instructions and safety precautions.</p>

Yaheetech

613812



1. Please read this instruction manual carefully before attempting to install.
2. Make sure the floor is level and clean before installation.
3. Use the provided screws and anchors to secure the cabinet to the wall.
4. Do not overload the cabinet with heavy items.
5. If the package is damaged, please contact the retailer for a replacement.



[Yaheetech 613812 Storage Cabinet Assembly Instructions](#)

Comprehensive guide for assembling the Yaheetech 613812 storage cabinet. Includes a detailed parts list, step-by-step assembly instructions, and essential wall anchoring safety information.