

Swiss Madison SM-BV810-C

Swiss Madison Arles 30 Single Bathroom Vanity

MODEL: SM-BV810-C

1. Important Safety Information

Please read all instructions carefully before assembly and installation. Failure to follow these instructions may result in property damage, personal injury, or product damage. Keep this manual for future reference.

- Always wear appropriate personal protective equipment (PPE) during assembly and installation.
- Ensure all parts are present and undamaged before beginning assembly. Do not proceed if any parts are missing or damaged.
- For plumbing connections, it is recommended to consult a qualified professional to ensure proper installation and prevent leaks.
- Do not overtighten screws or fasteners, as this may damage the product.
- This vanity is designed for freestanding installation. Secure the vanity to the wall if required by local codes or for added stability, especially in households with children or pets.

2. What's Included

Verify that all components listed below are present in your package:

- Vanity Cabinet (SM-BV810-C)
- Vanity Sink Top (Ceramic, with single basin and overflow)
- Installation Hardware (screws, hinges, etc.)



Image 1: Front view of the Arles 30 Single Bathroom Vanity cabinet. This image displays the two doors with intricate rattan detailed panels and the freestanding leg design.

3. Tools Required (Not Included)

- Phillips Head Screwdriver
- Adjustable Wrench
- Level
- Drill (optional, for wall mounting)
- Silicone Sealant (for sink top installation)
- Measuring Tape

4. Setup and Installation

This section outlines the steps for assembling and installing your Swiss Madison Arles vanity. Assembly is required.

1. **Unpack and Inspect:** Carefully remove all components from the packaging. Inspect each part for any damage or missing items. Refer to the 'What's Included' section.
2. **Cabinet Assembly:** Follow the detailed assembly instructions provided with the hardware kit to construct the vanity cabinet. Ensure all connections are secure but do not overtighten. The cabinet features hidden handles for a clean look and two doors with soft, slow-closing hinges.
3. **Positioning the Cabinet:** Place the assembled cabinet in its desired location. The vanity is designed for freestanding installation. Use a level to ensure the cabinet is perfectly horizontal. Adjust the legs if necessary.
4. **Install Sink Top:** Apply a bead of silicone sealant along the top edges of the vanity cabinet where the sink top will rest. Carefully place the ceramic vanity sink top onto the cabinet, aligning it properly. Press down firmly to ensure a good seal. Allow the sealant to cure according to the manufacturer's instructions.
5. **Plumbing Connections:** Connect the faucet (not included) to the pre-drilled 1 3/8" single faucet hole on the sink top. Connect the drain assembly (not included) to the standard 1 3/4" drain opening. The vanity features an open back for easy plumbing access. Connect the water supply lines and drain trap. Ensure all connections are watertight. It is recommended to have a qualified plumber perform these connections.
6. **Final Inspection:** Once all connections are made, slowly turn on the water supply and check for any leaks. Verify that the soft-close doors operate smoothly.



Image 2: Interior view of the Arles 30 Single Bathroom Vanity with both doors open, showing the internal storage space and the soft-close hinges.





Image 3: Back view of the Arles 30 Single Bathroom Vanity cabinet, highlighting the open back design for convenient plumbing installation.

5. Operating Instructions

The Swiss Madison Arles vanity is designed for straightforward use.

- **Door Operation:** The vanity features two doors equipped with soft, slow-closing hinges. To open, gently pull the door. To close, push the door until the soft-close mechanism engages, allowing it to close quietly and smoothly.
- **Storage:** Utilize the interior cabinet space for storing bathroom essentials.



Image 4: The Arles 30 Single Bathroom Vanity installed in a bathroom, showcasing its appearance with a sink and faucet (not included with cabinet).

6. Maintenance and Care

Proper care will ensure the longevity and appearance of your vanity.

- **Cabinet Cleaning:** For the laminate finish, wipe surfaces with a soft, damp cloth. Avoid abrasive cleaners, harsh chemicals, or solvents, as these can damage the finish. Dry immediately with a clean cloth.

- **Sink Top Cleaning:** Clean the ceramic sink top with mild soap and water. Rinse thoroughly and dry to prevent water spots. Avoid using abrasive pads or cleaners that could scratch the surface.
- **Spills:** Wipe up spills immediately to prevent water damage or staining, especially on the cabinet surfaces.
- **Hinge Maintenance:** The soft-close hinges are designed for durability. If they become stiff or noisy, a small amount of silicone-based lubricant can be applied.

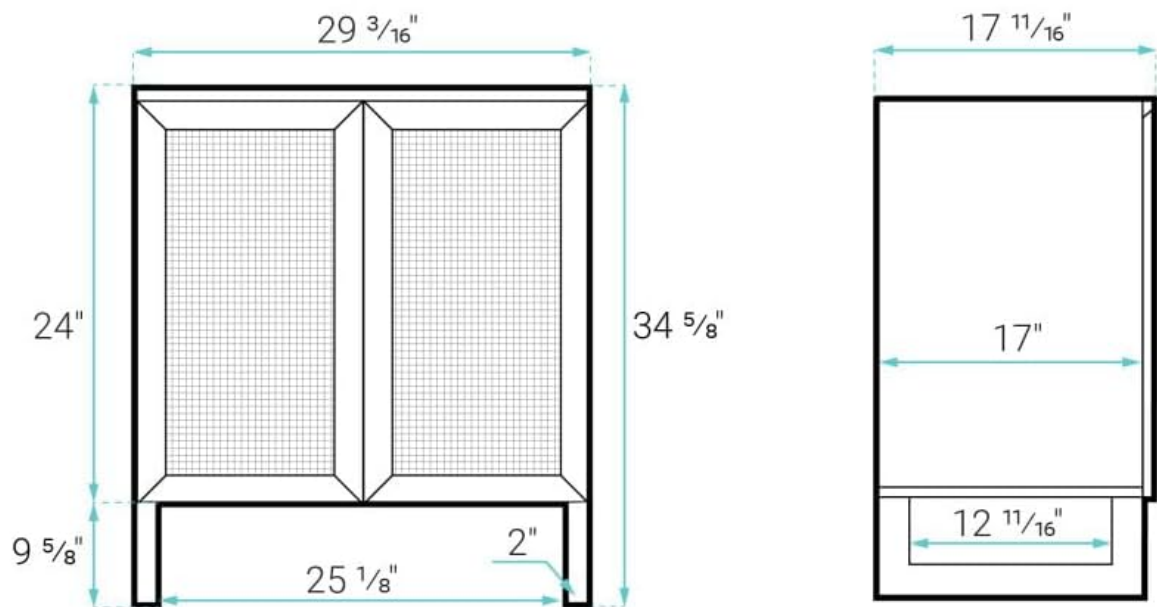
7. Troubleshooting

This section addresses common issues you might encounter.

- **Wobbly Cabinet:** Ensure the vanity is placed on a level surface. Adjust the feet or shims if necessary to stabilize the unit. Verify all assembly screws are tightened.
- **Doors Not Closing Properly:** Check the alignment of the hinges. Most hinges have adjustment screws that allow for minor adjustments to door position. Refer to the hinge manufacturer's instructions if needed.
- **Leaks from Plumbing:** If leaks occur after installation, re-check all plumbing connections. Ensure all fittings are tightened correctly and that plumber's tape or sealant was used where appropriate. If leaks persist, consult a qualified plumber.
- **Soft-Close Mechanism Not Working:** Ensure no obstructions are preventing the door from closing fully. Check if the hinges are damaged or require adjustment.

8. Specifications

Feature	Specification
Model Name	SM-BV810-C
Brand	Swiss Madison
Product Dimensions	18"D x 29.5"W x 35"H
Color	Brown (Honey Cabinet)
Material	Wood (Frame), Laminate (Finish)
Installation Type	Freestanding
Assembly Required	Yes
Door Style	Flat Panel with Rattan Detail
Faucet Hole	Pre-drilled 1 3/8" Single Faucet Hole
Drain Opening	Standard 1 3/4"
Basin Depth	5"
Item Weight	38 pounds



SM-BV810-C

Image 5: Technical drawing showing the detailed dimensions of the Arles 30 Single Bathroom Vanity (Model SM-BV810-C).

9. Warranty Information

This Swiss Madison product is covered by the manufacturer's limited warranty. For specific details regarding warranty coverage, terms, and conditions, please refer to the warranty documentation included with your purchase or visit the official Swiss Madison website. Keep your proof of purchase for warranty claims.

10. Customer Support

If you have any questions, require assistance with assembly or installation, or need to report missing or damaged parts, please contact Swiss Madison customer support. Contact information can typically be found on the product packaging or on the official Swiss Madison website.

