

EUHOMY U75

EUHOMY 80QT 12 Volt Car Refrigerator Instruction Manual

Model: U75 / CFU-75

1. SAFETY INSTRUCTIONS

Please read all safety instructions carefully before operating this appliance. Failure to follow these instructions may result in electric shock, fire, and/or serious injury.

- Ensure proper ventilation around the refrigerator.
- Do not block the ventilation openings in the appliance enclosure or in the built-in structure.
- Do not use mechanical devices or other means to accelerate the defrosting process, other than those recommended by the manufacturer.
- Do not damage the refrigerant circuit.
- Do not use electrical appliances inside the food storage compartments of the appliance, unless they are of the type recommended by the manufacturer.
- Keep the refrigerator placed on a flat horizontal surface for use.
- The refrigerator may be inverted during delivery. To ensure proper operation of the compressor, please keep the refrigerator standing upright for 12 hours before using it again.

2. PACKAGE CONTENTS

Verify that all items are included in your package:

- Car Refrigerator
- AC adaptor
- DC power cord
- User Manual



Image: Contents of the EUHOMY 80QT Car Refrigerator box, showing the main unit, AC adapter, DC power cord, and user manual.

Video: A detailed unboxing of the EUHOMY 80QT Car Refrigerator, showcasing all included accessories and components.

3. PRODUCT OVERVIEW

The EUHOMY 80QT 12 Volt Car Refrigerator is a portable electric cooler designed for versatile use in various scenarios, including camping, road trips, truck use, boating, and outdoor activities. It features a powerful compressor for efficient cooling and can function as both a refrigerator and a freezer.



Image: The EUHOMY 80QT 12 Volt Car Refrigerator, a portable unit with wheels and a retractable handle, suitable for various outdoor and travel uses.

Key Features

- **80 Quart (75L) Capacity:** Spacious interior without partitions, ideal for larger items.
- **Powerful Compressor:** High-efficiency variable frequency compressor for rapid cooling.
- **Wide Temperature Range:** Adjustable from 0°F to 68°F (-18°C to 20°C).
- **Dual Power Supply:** Operates on 100-240V AC (home) and 12/24V DC (car).
- **APP Control:** Conveniently adjust settings via a smartphone application.
- **Battery Protection System:** Three-level adjustable protection (L/M/H) to prevent vehicle battery drain.
- **Portable Design:** Equipped with sturdy handles and off-road wheels for easy transport.
- **Silent Operation:** Operates quietly at just 42 decibels.
- **Anti-shock Design:** Multi-functional non-slip base reduces movement during travel.

4. SETUP

4.1 Initial Setup

1. Unpack the refrigerator and all accessories.
2. Place the refrigerator upright on a flat, stable surface for at least 12 hours before initial use. This allows the

compressor oil to settle, ensuring proper function.

3. Clean the interior of the refrigerator with a damp cloth before first use.

4.2 Power Supply Options

The EUHOMY refrigerator offers flexible power options for various environments:

- **AC Power (Home/Wall Outlet):** Use the provided AC adaptor and power cord to connect to a standard 100-240V AC wall outlet.
- **DC Power (Car/Vehicle):** Use the provided DC power cord to connect to a 12V or 24V DC cigarette lighter socket in your vehicle.

PORTABLE SIZE & LARGE CAPACITY



Series^{CFU}

- ✓ Car Refrigerator X1
- ✓ DC Power Cord X1
- ✓ AC Adaptor X1

Image: Illustration of the three primary power supply methods for the refrigerator: solar panel via power station, standard home AC outlet, and vehicle DC outlet.

Video: Demonstrates connecting the BODEGA Cooler (similar to EUHOMY) to both AC and DC power sources, highlighting the versatility for home and vehicle use.

5. OPERATING INSTRUCTIONS

5.1 Control Panel Overview

The refrigerator features an intuitive LCD control panel for easy temperature adjustment and mode selection.

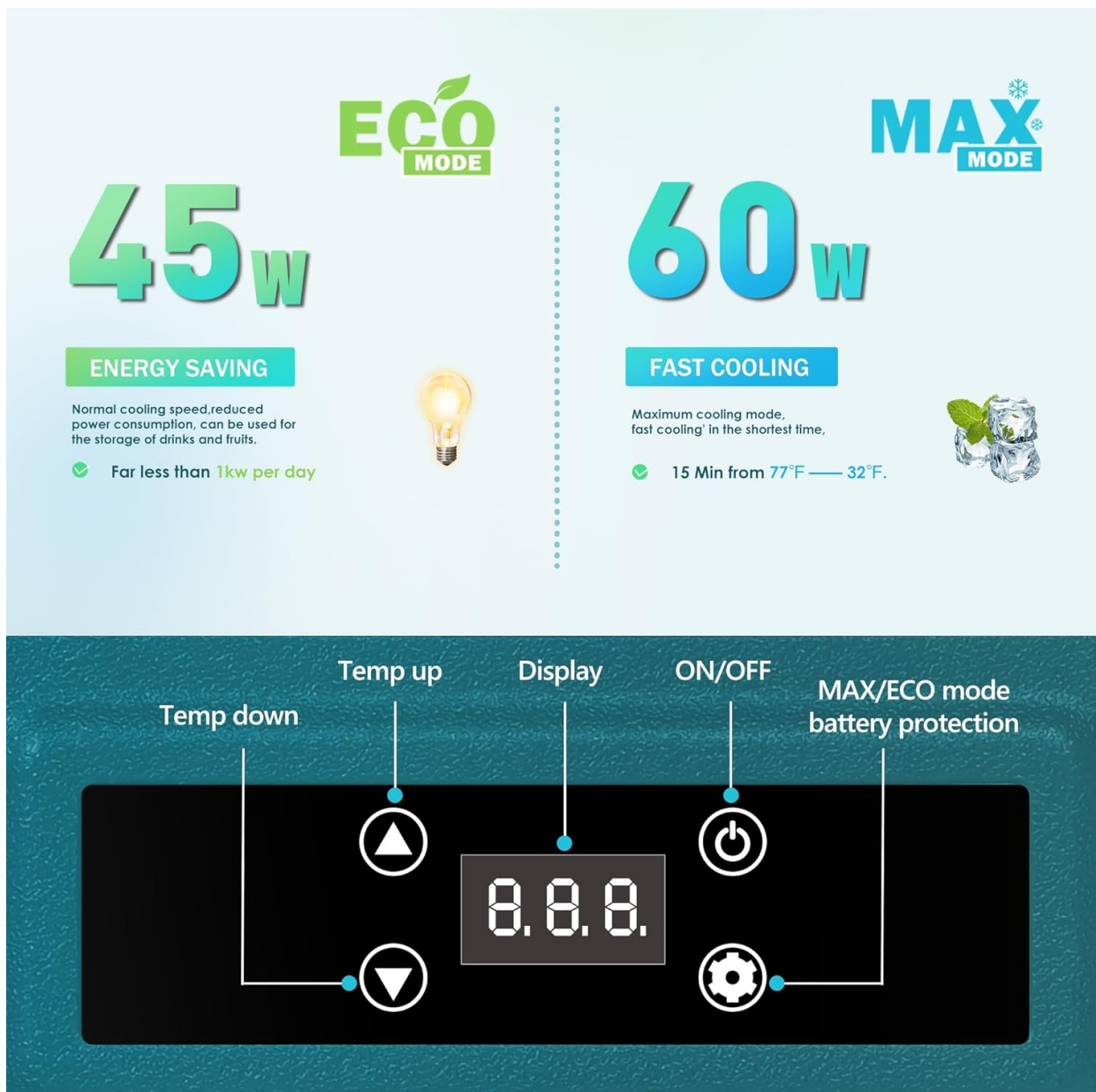


Image: The digital control panel of the EUHOMY refrigerator, showing temperature display, power button, temperature up/down buttons, and mode selection button.

- **Power Button:** Press and hold to turn the unit ON/OFF.
- **Temperature Adjustment Buttons (Up/Down):** Use to increase or decrease the desired temperature.
- **Settings Button:** Press to cycle through battery protection modes (H/M/L) or switch between MAX/ECO cooling modes.

Video: Demonstrates the basic operation of the EUHOMY 80QT Car Fridge control panel, including powering on, adjusting temperature, and switching modes.

5.2 Temperature Settings

The refrigerator can be set to a wide range of temperatures to suit your needs, from freezing to cooling. Use the temperature adjustment buttons on the control panel or the mobile app to set your desired temperature.



Image: A chart indicating recommended preservation temperatures for various common food items like meat, frozen food, seafood, vegetables, cooked food, water, canned drinks, fruits, soft drinks, and alcoholic drinks.

5.3 Cooling Modes (ECO/MAX)

Select between two cooling modes based on your priority:

- **MAX Mode:** Provides maximum cooling power for rapid temperature reduction. Ideal when you need to cool items quickly.
- **ECO Mode:** Optimizes energy consumption for extended use, consuming only 45W. Suitable for maintaining temperature over longer periods.

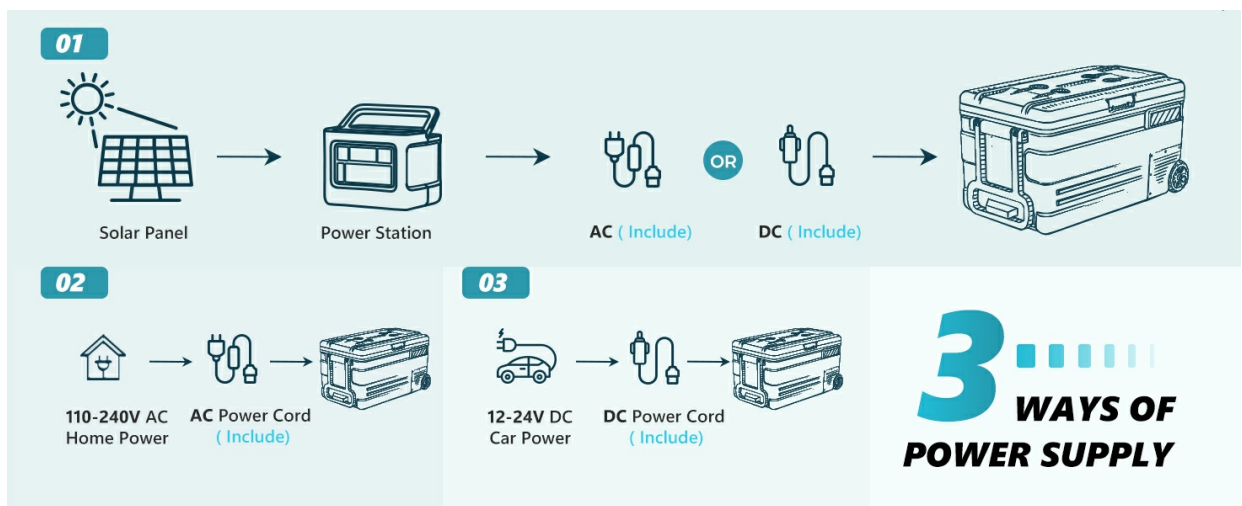


Image: Visual comparison of ECO (Energy Saving) and MAX (Fast Cooling) modes, detailing their power consumption and cooling speed.

5.4 Battery Protection

The refrigerator features a three-level battery protection system to prevent excessive discharge of your vehicle's battery. Adjust the setting (H for High, M for Medium, L for Low) based on your battery type and usage scenario.

- **H (High):** Highest protection, shuts off at a higher voltage (e.g., 12.4V). Recommended for sensitive batteries or when the vehicle is not running.
- **M (Medium):** Moderate protection, shuts off at a medium voltage (e.g., 10.7V).
- **L (Low):** Lowest protection, allows for longer operation before shutting off (e.g., 9.6V). Use with caution to avoid draining the vehicle battery.

Video: Demonstrates how to adjust the battery protection settings (Low, Medium, High) on the BODEGA Cooler (similar to EUHOMY) via the control panel and mobile app.

5.5 APP Control

Control your EUHOMY refrigerator conveniently from your smartphone using the dedicated APP. The APP allows you to:

- Monitor current temperature and battery level.
- Adjust desired temperature.
- Switch between MAX and ECO cooling modes.
- Set battery protection level.
- Lock the control panel to prevent accidental changes.

Video: Illustrates the use of the mobile application to control the BODEGA Cooler (similar to EUHOMY), showing temperature adjustment, mode selection, and battery protection settings.

6. MAINTENANCE

6.1 Cleaning

Regular cleaning ensures optimal performance and longevity of your refrigerator.

- Always disconnect the power supply before cleaning.
- Clean the interior and exterior surfaces with a damp cloth and mild detergent. Avoid abrasive cleaners.
- Use the drain plug at the bottom of the interior to easily remove any water after cleaning.



Image: The spacious interior of the EUHOMY refrigerator filled with various items, emphasizing the convenient drain plug for effortless cleaning.

6.2 Storage

If storing the refrigerator for an extended period:

- Ensure the unit is thoroughly cleaned and dry.
- Leave the lid slightly ajar to prevent odors and mold growth.
- Store in a dry, well-ventilated area.

7. TROUBLESHOOTING

If you encounter issues with your EUHOMY refrigerator, refer to the following common problems and solutions:

- **Refrigerator not turning on:** Check power connection, fuse, and ensure battery voltage is sufficient.
- **Poor cooling performance:** Ensure the lid is properly closed and sealed. Check for obstructions around ventilation. Verify temperature setting is appropriate.
- **Unusual noise:** Ensure the refrigerator is on a flat surface. Check for loose items inside.
- **Water drops/condensation:** This is normal in humid environments due to condensation. Wipe dry as needed.

For more detailed troubleshooting, please consult the full user manual or contact EUHOMY customer support.

8. TECHNICAL SPECIFICATIONS

Feature	Specification
Brand Name	EUHOMY
Model Info	U75
Item Weight	41.2 pounds
Product Dimensions	35.04"D x 20.16"W x 21.02"H
Capacity	70 Liters (80 Quart)
Annual Energy Consumption	45 Kilowatt Hours
Voltage	12 Volts (DC 12/24V, AC 100-240V)
Defrost System	Frost Free
Material Type	Polyethylene (PE)
Special Features	Anti-Shake, Energy Efficient, Inverter Compressor, LED Display, Large Capacity

9. WARRANTY AND SUPPORT

EUHOMY provides a 2-year technical support for this product. If you have any questions, concerns, or require assistance with your EUHOMY 80QT 12 Volt Car Refrigerator, please do not hesitate to contact our customer support team. For warranty registration and additional information, please visit the official EUHOMY website or refer to the contact details provided in your user manual.