

Haier HRF-550TDBG

Haier HRF-550TDBG 4-Door Refrigerator User Manual

Model: HRF-550TDBG

1. INTRODUCTION

Thank you for choosing the Haier HRF-550TDBG 4-Door Refrigerator. This manual provides essential information for the safe and efficient use, installation, and maintenance of your appliance. Please read these instructions carefully before operating the refrigerator and retain them for future reference.

2. SAFETY INFORMATION

Always follow basic safety precautions when using electrical appliances to reduce the risk of fire, electric shock, and personal injury.

- Ensure the refrigerator is properly grounded.
- Do not damage the refrigerant circuit.
- Keep ventilation openings clear of obstruction.
- Do not use mechanical devices or other means to accelerate the defrosting process, other than those recommended by the manufacturer.
- Do not use electrical appliances inside the food storage compartments, unless they are of the type recommended by the manufacturer.
- Unplug the appliance before cleaning or performing maintenance.
- This appliance is not intended for use by persons (including children) with reduced physical, sensory or mental capabilities, or lack of experience and knowledge, unless they have been given supervision or instruction concerning use of the appliance by a person responsible for their safety.

3. PRODUCT OVERVIEW

The Haier HRF-550TDBG is a 4-door refrigerator with a bottom freezer configuration, designed for optimal food preservation and convenience.

Key Features:

- **502 Liter Capacity:** Ample storage for fresh and frozen foods.
- **4-Door Design:** Provides organized access to different compartments.

- **Bottom Freezer:** Convenient access to frozen items.
- **Dual Inverter Compressor:** Efficient and quiet operation with precise temperature control.
- **No Frost Technology:** Prevents ice buildup in both the refrigerator and freezer compartments, eliminating manual defrosting.
- **Independent Dry and Wet Fresh Zone:** Dedicated compartments to maintain optimal humidity levels for different types of produce.
- **T-ABT Anti-bacterial Technology:** Helps to reduce bacteria and odors inside the refrigerator.
- **Super Cool & Super Freeze Functions:** Rapidly cools or freezes new items to preserve freshness.
- **External Electronic Control Panel:** Easy temperature adjustments and function selection.
- **Glass Shelves:** Durable and easy to clean interior shelving.

Components:

Familiarize yourself with the main components of your refrigerator.



Figure 3.1: Exterior view of the Haier HRF-550TDBG refrigerator. This image shows the glossy black finish and the four-door design with integrated handles.



Figure 3.2: Interior view of the Haier HRF-550TDBG refrigerator with all four doors open. It displays the glass shelves in the upper refrigerator section and the six freezer drawers in the lower section, along with door shelves.

4. SETUP AND INSTALLATION

4.1 Unpacking

- Remove all packaging materials, including foam and adhesive tape.
- Inspect the refrigerator for any shipping damage. Report any damage immediately to your retailer.

4.2 Placement

- Place the refrigerator on a firm, level floor.
- Ensure adequate ventilation around the appliance. Maintain at least 10 cm (4 inches) of space at the back and sides, and 30 cm (12 inches) at the top.
- Avoid direct sunlight and heat sources.
- Do not install in areas where the temperature is likely to fall below 10°C (50°F) or rise above 43°C (110°F).

4.3 Leveling

Adjust the leveling feet at the bottom of the refrigerator to ensure it is stable and level. This helps to reduce vibration and ensures proper door sealing.

4.4 Electrical Connection

- Connect the refrigerator to a dedicated, grounded electrical outlet.
- Do not use extension cords or adapter plugs.
- Allow the refrigerator to stand upright for at least 2-4 hours before plugging it in to allow the refrigerant to settle.

5. OPERATING INSTRUCTIONS

5.1 Initial Startup

After plugging in the appliance, the internal temperature will gradually decrease. It may take several hours for the

refrigerator to reach its set temperature. Avoid placing food inside during the first 2-4 hours.

5.2 Temperature Control

The refrigerator features an external electronic control panel located on the door. Use this panel to adjust the temperature settings for both the refrigerator and freezer compartments.

- **Refrigerator Temperature:** Typically set between 2°C and 8°C (36°F and 46°F).
- **Freezer Temperature:** Typically set between -16°C and -24°C (3°F and -11°F).

5.3 Special Functions

- **Super Cool:** Activates rapid cooling in the refrigerator compartment. Useful when adding a large quantity of new food. This function will automatically deactivate after a set period or when the target temperature is reached.
- **Super Freeze:** Activates rapid freezing in the freezer compartment. Ideal for quickly freezing fresh food to preserve its quality. This function will automatically deactivate after a set period or when the target temperature is reached.
- **No Frost:** This refrigerator is equipped with Total No Frost technology, which automatically prevents ice buildup. No manual defrosting is required for either compartment.
- **Independent Dry and Wet Fresh Zone:** These zones are designed to optimize humidity for specific foods.
 - The **Wet Zone** maintains higher humidity (around 90%) for fruits and vegetables.
 - The **Dry Zone** maintains lower humidity for items like meat, fish, or dairy.



Figure 5.1: Illustration of Total No Frost technology, which prevents ice accumulation in the freezer and addresses food drying issues in the refrigerator, ensuring better storage conditions.

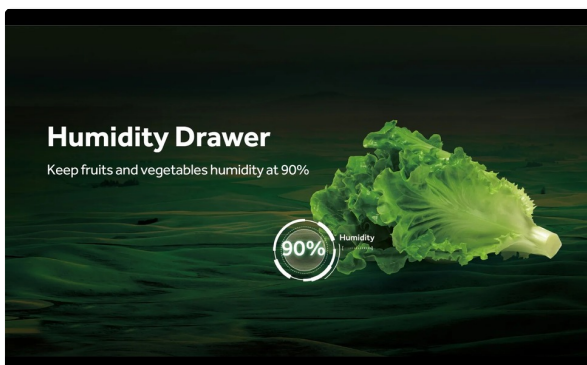


Figure 5.2: Diagram explaining the Humidity Drawer, designed to maintain fruit and vegetable humidity at approximately 90% for extended freshness.

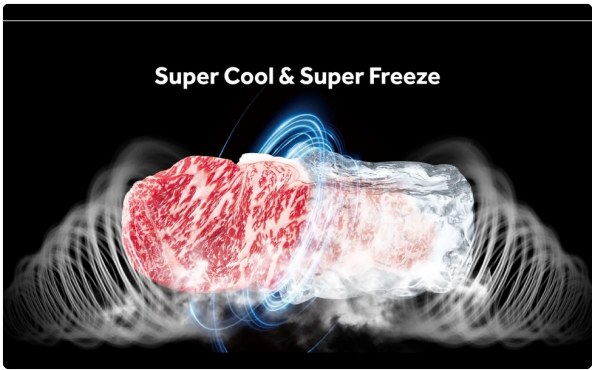


Figure 5.3: Visual representation of the Super Cool and Super Freeze functions, indicating rapid cooling and freezing capabilities to preserve food quality.

6. MAINTENANCE AND CLEANING

6.1 Cleaning the Interior

- Always unplug the refrigerator before cleaning.
- Clean the interior with a soft cloth dampened with a solution of mild detergent and warm water.
- Wipe dry with a clean, soft cloth.
- Removable shelves and drawers can be washed in warm soapy water, rinsed, and dried thoroughly.

6.2 Cleaning the Exterior

- Wipe the exterior surfaces with a soft, damp cloth. For glossy surfaces, use a non-abrasive cleaner specifically designed for appliances.
- Clean the door gaskets regularly to ensure a tight seal.

6.3 Condenser Coil Cleaning

Periodically clean the condenser coils located at the back or bottom of the refrigerator. Dust and debris can accumulate, reducing efficiency. Use a vacuum cleaner or a soft brush to remove buildup.

6.4 ABT Filter Maintenance

The T-ABT Anti-bacterial Technology filter is designed for long-term use and typically does not require replacement. However, ensure the air vents around it are not blocked to maintain its effectiveness.

7. TROUBLESHOOTING

Before contacting service, review the following common issues and solutions:

Problem	Possible Cause	Solution
Refrigerator does not operate.	Not plugged in; circuit breaker tripped; power outage.	Check power cord, reset breaker, check household power.
Temperature is not cold enough.	Door left open; warm food added; temperature setting too high; poor ventilation.	Ensure door is closed; allow warm food to cool before storing; adjust temperature setting; ensure proper clearance around appliance.

Problem	Possible Cause	Solution
Excessive noise.	Refrigerator not level; items vibrating inside; compressor noise (normal).	Level the appliance; rearrange items; compressor noise is normal during operation.
Water on floor.	Drain tube blocked; excessive humidity.	Clear drain tube; ensure doors are not left open frequently.
Odor inside.	Food not properly sealed; interior needs cleaning.	Seal food containers; clean interior thoroughly.

8. SPECIFICATIONS

Specification	Detail
Brand Name	Haier
Model Information	HRF-550TDBG
Product Dimensions	83 x 67 x 180 cm
Item Weight	30 Kilograms
Capacity	502 Liters
Fresh Food Capacity	502 Liters
Installation Type	Integrated
Form Factor	Bottom Freezer
Special Features	Fast Freezing, Super Cool, Super Freeze, Independent Dry & Wet Zone, ABT Filter, Dual Inverter Compressor
Color	Glossy Black
Defrost Type	Automatic (No Frost)
Door Material Type	Glass
Shelf Type	Glass
Number of Shelves	3
Rating	Energy Star
Refrigerant	R-600A or R-290
Number of Doors	4

9. WARRANTY AND SUPPORT

For warranty information and customer support, please refer to the warranty card included with your purchase or visit the official Haier website. Keep your proof of purchase for warranty claims.

Haier Customer Service: www.haier.com/global/service/