

Haier HWM90-H678ES8

Haier 9 Kg Fully Automatic Top Loading Washing Machine (HWM90-H678ES8) User Manual

Model: HWM90-H678ES8

INTRODUCTION

This manual provides essential information for the safe and efficient operation, installation, and maintenance of your Haier 9 Kg Fully Automatic Top Loading Washing Machine, model HWM90-H678ES8. Please read these instructions carefully before using the appliance and retain them for future reference.



Image: Front view of the Haier HWM90-H678ES8 washing machine.

IMPORTANT SAFETY INSTRUCTIONS

Always follow basic safety precautions when using electrical appliances to reduce the risk of fire, electric shock, or injury to persons.

- Ensure the washing machine is properly grounded.
- Do not operate the machine if the power cord is damaged.
- Keep children and pets away from the appliance during operation.
- Do not wash items that are soiled with flammable substances.
- Unplug the appliance before cleaning or performing any maintenance.

SETUP AND INSTALLATION

Unpacking

Carefully remove all packaging materials. The package includes:

- 1 Washing Machine
- 1 Bottom Plate
- 1 Water Inlet Hose

Placement

Place the washing machine on a firm, level surface. Ensure there is adequate space around the machine for ventilation and access. Avoid direct sunlight or extreme temperatures.

Leveling

Adjust the leveling feet to ensure the machine is stable and does not wobble. Proper leveling reduces noise and vibration during operation.

Water Connection

Connect the water inlet hose to a cold water tap and to the inlet valve on the back of the washing machine. Ensure all connections are tight to prevent leaks. The machine is designed for Near Zero Pressure (NZP) operation.

Drainage

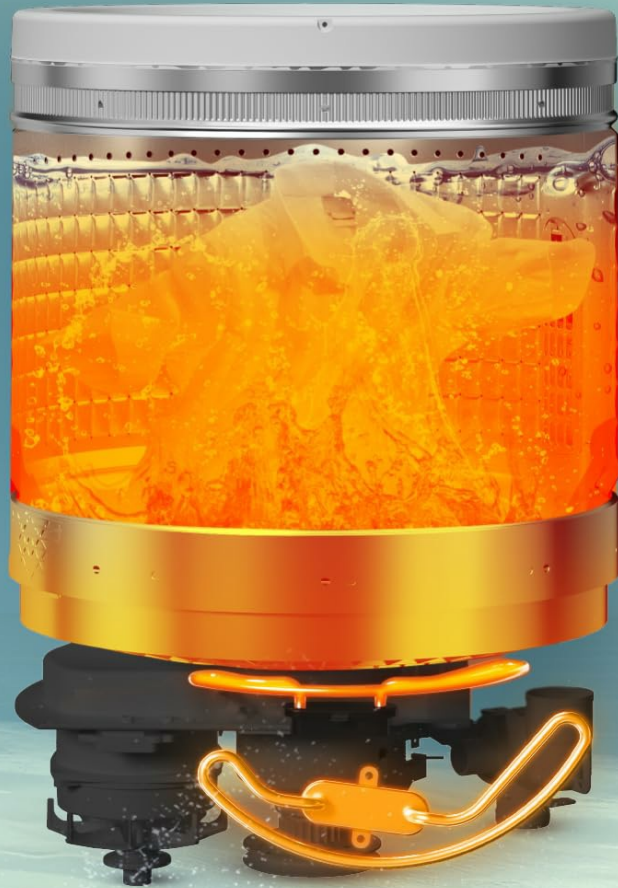
Position the drain hose correctly into a standpipe or sink, ensuring it is securely fastened to prevent dislodgement during draining.

Power Connection

Plug the power cord into a grounded electrical outlet. Ensure the voltage matches the machine's requirements (220 Volts).

99.9% GERM FREE

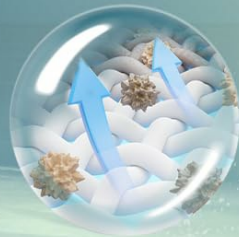
With Advanced In-Built Heater



30% Uniform Heating



Removes 106 Tough Stains



Removes 3 Days Old Stains

Image: Side view of the washing machine, showing its form factor.

OPERATING INSTRUCTIONS

Control Panel Overview

The control panel features a digital display and push buttons for selecting wash programs and settings.



Image: Detailed view of the control console with various program options and digital display.

Loading Laundry

Open the top lid and place laundry loosely into the drum. Do not overload the machine. The 9 kg capacity is suitable for large families.

Detergent and Softener Dispensing

Add appropriate amounts of detergent and fabric softener to their designated compartments. Refer to detergent packaging for recommended quantities.

Selecting a Wash Program

Turn on the machine using the Power button. Use the Program button or selection dial to choose from over 15 wash programs:

- Allergen
- Hot
- Warm
- Normal
- Shirt
- Spin
- Delicate
- Quick
- Heavy
- Sports

- Eco
- Silk
- Soak
- Wool
- Baby care
- Synthetic
- Rinse + Spin
- Air dry

The digital display will show the selected program, remaining time, and other settings.



Image: Control panel illustrating the variety of wash programs available.

Special Features

- **In-Built Heater:** This feature provides hot water washes for enhanced cleaning and germ removal. It offers 3 hot water modes (Allergen Free, Hot, Warm) up to 60°C.



ELEVATING LAUNDRY CARE

With Our Exceptional Services

	800+ Service centres
	3000+ Technicians
	Present across 19000+ pincodes & 170+ Locations
	Long-lasting shock-proof product satisfaction

Image: Visual representation of the in-built heater function for germ-free and stain removal washing.

- **Oceanus Wave Drum:** Designed to generate powerful water waves for deep penetration into fabrics, effectively removing dirt and stains while being abrasion-free.



Image: Illustration of the Oceanus Wave Drum technology for effective and gentle washing.

- **Dual Magic Filter:** Helps to collect lint and debris, ensuring cleaner clothes and preventing drain clogs.
- **Softfall Technology:** Ensures the lid closes gently and safely.
- **Voltage Protection:** Protects the machine from voltage fluctuations.
- **Auto Restart:** Automatically resumes operation after a power outage.
- **Child Lock:** Prevents accidental changes to settings during operation.

Starting a Wash Cycle

After selecting the program and desired options, press the Start/Pause button to begin the wash cycle.

MAINTENANCE

Regular maintenance ensures optimal performance and extends the lifespan of your washing machine.

Cleaning the Drum

Periodically run a "Tub Dry" or "Drum Clean" cycle (if available) with a washing machine cleaner to remove detergent residue and prevent odors.

Cleaning the Magic Filter

The Dual Magic Filter should be cleaned regularly to maintain efficient lint collection. Remove the filter, rinse it under running water, and reinsert it.

Exterior Cleaning

Wipe the exterior of the machine with a soft, damp cloth. Avoid abrasive cleaners or solvents.

Water Inlet Filter

Check and clean the water inlet filter periodically to prevent blockages caused by sediment in the water supply.

TROUBLESHOOTING

Before contacting service, refer to the following common issues and solutions:

Problem	Possible Cause	Solution
Machine does not start	Power cord unplugged, lid not closed, power outage, Start/Pause not pressed.	Check power connection, ensure lid is fully closed, check household power, press Start/Pause.
No water filling	Water tap closed, water inlet hose kinked, water supply pressure too low, inlet filter clogged.	Open water tap, straighten hose, check water supply, clean inlet filter.
Water not draining	Drain hose kinked or blocked, drain pump filter clogged.	Check and clear drain hose, clean drain pump filter (refer to full manual for location).
Excessive vibration/noise	Machine not level, transport bolts not removed, uneven load.	Adjust leveling feet, ensure transport bolts are removed (during initial installation), redistribute laundry evenly.

Problem	Possible Cause	Solution
In-built heater not activating	Incorrect program selected, heater element malfunction.	Ensure a hot water program (e.g., "Hot", "Allergen") is selected. If issue persists, contact service.
Poor wash quality	Overloading, insufficient detergent, incorrect program, clogged filter.	Reduce load size, use correct detergent amount, select appropriate wash program, clean Magic Filter.

For issues not listed here or if problems persist, please contact Haier customer service.

SPECIFICATIONS

Feature	Detail
Brand	Haier
Model	HWM90-H678ES8
Capacity	9 Kilograms
Type	Fully Automatic Top Loading
Energy Star Rating	5 Star
Maximum Rotational Speed	780 RPM
Noise Level	14.4 dB
Special Features	Auto Restart, In-Build Heater, Near Zero Pressure (NZP), Rat mesh, Softfalling, Oceanus Wave Drum, Dual Magic Filter, Voltage Protection, Shock Proof, Fuzzy Logic, Quick Wash, Tub Dry, Child Lock, Anti Rat Mesh
Control Console	Push Button
Number of Wash Programs	15+
Voltage	220 Volts
Item Weight	37 kg
Dimensions (LxWxH)	55 x 61 x 99 Centimeters
Country of Origin	India

WARRANTY INFORMATION

The Haier HWM90-H678ES8 washing machine comes with a manufacturer's warranty:

- **Product Warranty:** 5 years
- **Motor Warranty:** 12 years

To avail warranty services, please retain your purchase invoice. The warranty card is typically included with the product. Extended warranty plans may be available from third-party providers. Please refer to their terms and conditions for details.



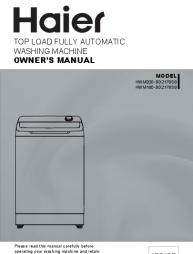
CUSTOMER SUPPORT

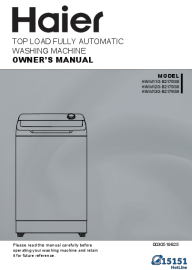
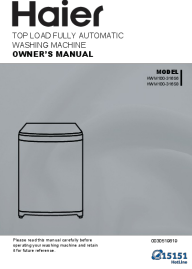

For any queries, service requests, or technical assistance, please contact Haier customer support.

- **Manufacturer:** HAIER APPLIANCES INDIA PVT LTD
- **Email:** info@haierindia.com
- **User Manual Access:** The full user manual can be accessed from the official Haier brand website.

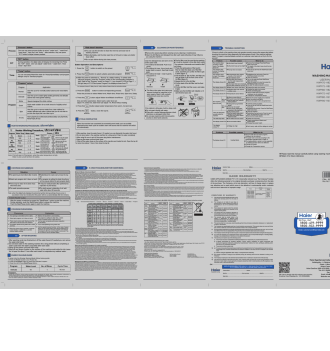

Haier provides extensive service support with over 800 service centers and 3000+ technicians across various locations.

Related Documents - HWM90-H678ES8

	<p>Haier Top Load Fully Automatic Washing Machine Owner's Manual</p> <p>This manual provides detailed instructions for the installation, operation, cleaning, maintenance, and troubleshooting of Haier Top Load Fully Automatic Washing Machines, including models HWM80-316S6, HWM90-316S6, HWM100-316S6, and HWM120-316S6.</p>
	<p>Haier HWM120-M826 Fully Automatic Top Load Washing Machine Owner's Manual</p> <p>This manual provides comprehensive instructions for the Haier HWM120-M826 fully automatic top load washing machine, covering installation, operation, safety precautions, maintenance, and troubleshooting.</p>
	<p>Haier Top Load Fully Automatic Washing Machine Owner's Manual</p> <p>This owner's manual provides comprehensive guidance for Haier Top Load Fully Automatic Washing Machines, models HWM200-BD2178S8 and HWM180-BD2178S8. It covers installation, safety, operation, maintenance, and troubleshooting to ensure efficient and safe use.</p>

	<p>Haier Washing Machine Owner's Manual: HWM110-B2178S8, HWM120-B2178S8, HWM130-B2178S8</p> <p>Comprehensive owner's manual for Haier Top Load Fully Automatic Washing Machines, covering installation, operation, safety, maintenance, and troubleshooting for models HWM110-B2178S8, HWM120-B2178S8, and HWM130-B2178S8.</p>
	<p>Haier HWM100-316S6/HWM100-316S8 Top Load Fully Automatic Washing Machine Owner's Manual</p> <p>This owner's manual provides comprehensive instructions for the Haier HWM100-316S6 and HWM100-316S8 top load fully automatic washing machine. It covers product overview, safety precautions, installation, operation, cleaning, maintenance, troubleshooting, packing, unpacking, and technical specifications.</p>
	<p>Haier 10kg 600 Series Top Loader Washing Machine HWT10AD1 with UV Protect - Quick Reference Guide</p> <p>Quick reference guide for the Haier 10kg 600 Series Top Loader Washing Machine (HWT10AD1). Features UV Protect, Smart Dosing, 12+ wash cycles, and SmartHQ app connectivity. Includes specifications, dimensions, and benefits.</p>

Documents - Haier – HWM90-H678ES8

	<p>[pdf] User Manual</p> <p>0030518293A UM Heater Model V002 cdr Geetam Singh Download Haier HWM90 H678ES8 9 Kg Fully Automatic Top load Washing Machine India W020230812559665293570 Manual haier in washing machines </p> <p>Note: If lid will open in P6 program, when the water temperature is high, Water in and out will be there for safety. Cycle Time 40 min HWM75-H678ES5 HWM80-H678ES8 HWM90-H678ES8 Rev. No.: 02_25/04/2023 For: H826 Series Fixed Foot For: H678 Series Absorbent Pad Hanging hole for drain pipe Pulsat...</p> <p>lang:tl score:51 filesize: 15.25 M page_count: 2 document date: 2023-05-22</p>
	<p>[pdf]</p> <p>Wasi Raiyan SBICard level1 SBI Card LEVEL1 LEVEL4 Code Min Amt Max Cashback Washing Machine HWD120 B1558 409586 103000 159100 20P 12k HW120 Product List Haier sbicard sbi card en assets docs html personal offers 25years EligibleModelList </p> <p>LEVEL1 Washing Machine Washing Machine Refrigerator OLED Refrigerator Washing Machine LED Washing Ma ... ing Machine Washing Machine LE65X7000QUA LE58K6600HQGA LE58K7700HQGA LE65U6900HQGA HW75-DM14959CU1 HWM90-H678ES8 HSW100-261NZZ HW70-DM14959U1 HWM100-826S5 HWM90-1678T HWM95-261NZZ HWM75-H678ES5 HWM80...</p> <p>lang:de score:18 filesize: 267.65 K page_count: 7 document date: 2022-12-27</p>