

## Ansmann AES1.3

# ANSMANN AES1.3 Timer Socket User Manual

Model: AES1.3

## 1. INTRODUCTION

---

The ANSMANN AES1.3 Timer Socket is an energy-saving device designed to automatically disconnect connected electrical appliances from the power supply after a user-defined operating time. This helps to reduce standby power consumption, save energy, and enhance safety by preventing appliances from running unattended for extended periods.

This manual provides essential information for the safe and efficient use of your AES1.3 Timer Socket. Please read it thoroughly before initial use and keep it for future reference.



# Zuverlässig & sicher

Schaltet deine Verbraucher nach Ablauf der eingestellten Zeit automatisch aus

Figure 1: The AES1.3 Timer Socket helps save energy and reduce environmental impact.

## 2. SAFETY INSTRUCTIONS

- Always ensure the timer socket is correctly plugged into a grounded wall outlet.
- Do not exceed the maximum load capacity of 3680W / 16A. Overloading can cause overheating and fire hazards.
- Do not use the timer socket with appliances that require continuous supervision, such as electric kettles, irons, or portable heaters, unless you are present and attentive. Unattended operation of such devices can be a fire risk.
- This device is designed for indoor use only. Do not expose it to moisture, water, or extreme temperatures.
- Do not disassemble or attempt to repair the device. Contact qualified personnel for service.
- Keep out of reach of children.
- **Important Note for French Users:** This product may not be compatible with French electrical outlets that require a protruding earth pin. Please verify your local socket type before purchase and use.

## 3. PRODUCT OVERVIEW

The ANSMANN AES1.3 Timer Socket features intuitive controls for easy operation.

# Alles automatisieren

Mache dein Zuhause zu einem kleinen Smart Home



Figure 2: ANSMANN AES1.3 Timer Socket with controls and indicators.

## Components and Controls:

- **Power Outlet:** For connecting your electrical appliance.
- **Time Selection Button (SCAN):** Used to cycle through preset countdown times.
- **Repeat Button (REPEAT):** Activates the repeat function for the last selected timer setting.
- **ON/OFF Button:** Manually switches the power on or off, overriding any active timer program.
- **LED Indicators:** Lights indicating the selected countdown time (15min, 30min, 1h, 2h, 4h, 6h).

## 4. SETUP

1. Unpack the ANSMANN AES1.3 Timer Socket.
2. Plug the timer socket into a standard 230V wall outlet.
3. Plug the electrical appliance you wish to control into the power outlet of the timer socket. Ensure the appliance is switched on if it has its own power switch.

## 5. OPERATING INSTRUCTIONS

---

### Setting the Countdown Timer:

1. With the timer socket plugged in and an appliance connected, press the **Time Selection Button (SCAN)**.
2. Each press of the button will cycle through the available countdown times: 15 minutes, 30 minutes, 1 hour, 2 hours, 4 hours, and 6 hours. The corresponding LED indicator will light up to show the selected time.
3. Once the desired time is selected, the timer will start automatically. The connected appliance will receive power for the duration of the countdown.
4. After the set time expires, the timer socket will automatically cut power to the connected appliance.

### Using the Repeat Function:

The repeat function allows you to easily restart the previously selected timer program at the same time on subsequent days.

1. After a timer program has completed, or if you wish to set it for the next day, press the **Repeat Button (REPEAT)**.
2. The timer will reactivate with the last chosen countdown setting.

### Manual ON/OFF:

To manually switch the power to the connected appliance on or off, regardless of any active timer program:

- Press the **ON/OFF Button**. This will immediately toggle the power state.
- When manually switched off, no timer program will run until a new one is set or the device is manually switched on again.

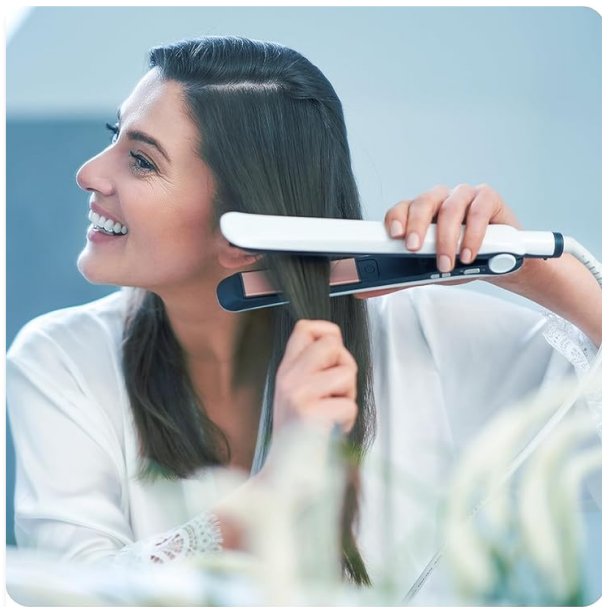


Figure 3: Examples of appliances that can be controlled by the AES1.3 Timer Socket.

## 6. MAINTENANCE

- To clean the timer socket, disconnect it from the power outlet and wipe it with a dry, soft cloth.
- Do not use abrasive cleaners or solvents.
- Ensure the device is completely dry before reconnecting it to power.

## 7. TROUBLESHOOTING

### Appliance does not turn on:

- Check if the timer socket is securely plugged into the wall outlet.
- Ensure the connected appliance is properly plugged into the timer socket.
- Verify that the appliance itself is switched on (if it has its own power switch).
- Check if a timer program is active and has not yet expired, or if the device is manually switched off. Press the ON/OFF button to manually turn it on.
- Confirm that the appliance's power consumption does not exceed the timer socket's maximum load

(3680W / 16A).

### Timer program does not start or stops prematurely:

- Ensure you have correctly selected a countdown time using the Time Selection button. The corresponding LED should be lit.
- If the power supply was interrupted, the timer may reset. Re-select your desired time.

### Compatibility Issue (e.g., in France):

- If the timer socket does not fit your wall outlet, it may be due to regional plug type differences, particularly regarding grounding pins. This product uses a Type F (Schuko) plug. Ensure your wall outlet is compatible.

## 8. SPECIFICATIONS

<b>Brand</b>	Ansmann
<b>Model Number</b>	1260-0010 (AES1.3)
<b>Voltage</b>	230 Volts
<b>Current Intensity</b>	16 A
<b>Maximum Load</b>	3680 W
<b>Dimensions (L x W x H)</b>	7.7 x 8 x 7.8 cm
<b>Weight</b>	134 grams
<b>Material</b>	Plastic
<b>Connector Type</b>	Schuko (Type F)
<b>Countdown Times</b>	15 min, 30 min, 1 hour, 2 hours, 4 hours, 6 hours
<b>Compliance</b>	CE
<b>Country of Origin</b>	Germany

## 9. WARRANTY AND SUPPORT

### Warranty:

ANSMANN provides a 1-year warranty for spare parts for this product. Please retain your proof of purchase for warranty claims.

### Customer Support:

For technical assistance, troubleshooting, or warranty inquiries, please contact ANSMANN customer support through their official website or the retailer where the product was purchased.

Please have your product model number (AES1.3 or 1260-0010) and purchase date available when contacting support.

