

## VEVOR 75FT x 3/8Inch

# VEVOR 75FT x 3/8-Inch Auto-Feed Drain Cleaner Machine

## INSTRUCTION MANUAL

### 1. Introduction

---

This manual provides essential information for the safe and effective operation, setup, and maintenance of your VEVOR 75FT x 3/8-Inch Auto-Feed Drain Cleaner Machine. Please read and understand all instructions before use to ensure proper function and user safety.

### 2. Safety Information

---

Operating power tools requires adherence to strict safety guidelines to prevent injury or damage. Always prioritize safety during all stages of use.

- Always wear appropriate personal protective equipment (PPE), including heavy-duty gloves and eye protection.
- Ensure the machine is connected to a Ground Fault Circuit Interrupter (GFCI) protected outlet to prevent electric shock.
- Keep the work area clean and well-lit. Cluttered or dark areas invite accidents.
- Do not operate the machine in the presence of flammable liquids or gases.
- Keep children and bystanders away from the operating area.
- Never force the cable. If resistance is met, retract slightly and try again.
- Ensure the correct cutter is selected for the pipe size and type of clog.
- Always turn off and unplug the machine before performing any maintenance or changing accessories.

### 3. Product Overview and Components

---

The VEVOR Drain Cleaner Machine is designed for efficient removal of stubborn clogs in pipes ranging from 1 inch to 4 inches in diameter. Key features include an auto-feed system, a powerful motor, and a variety of interchangeable cutters.



Image: VEVOR Drain Cleaner Machine with its main components and included cutters.

### Main Components:

- **Motor Unit:** Provides power for cable rotation and auto-feed.
- **Cable Drum:** Houses the 75FT x 3/8-inch steel core cable.
- **Auto-Feed Control System:** Manages cable feeding and retraction.

- **Air-Activated Foot Switch:** Allows hands-free operation of the motor.
- **Retractable Handle:** For easy transport and storage.
- **8-inch Shock-Absorbing Wheels:** Facilitate mobility on various surfaces.
- **Interchangeable Cutters:** Arrow, Spade, C-Cutter, Boring Bulb.
- **Integrated GFCI:** For electrical safety.

## 4. Setup

---

The VEVOR Drain Cleaner Machine comes mostly pre-assembled. Follow these steps for final assembly before first use:

1. **Attach the Handle:** Secure the retractable handle to the main frame using the provided hardware. Ensure all bolts are tightened securely.
2. **Attach the Wheels:** Mount the 8-inch wheels to the axle, securing them with the provided washers and nuts.
3. **Connect the Foot Switch:** Plug the air-activated foot switch into its designated port on the machine.
4. **Inspect the Cable:** Before each use, visually inspect the entire length of the cable for any kinks, breaks, or damage. Replace damaged cables immediately.
5. **Select and Attach Cutter:** Choose the appropriate cutter for the job (refer to Section 6) and securely attach it to the end of the cable using the provided pin or locking mechanism.

## 5. Operating Instructions

---

Follow these steps for safe and effective operation of your drain cleaner machine:

1. **Position the Machine:** Place the machine as close as possible to the drain opening. Ensure it is on a stable, level surface.
2. **Insert the Cable:** Manually feed the cable into the drain opening until it reaches the clog or a point of resistance.
3. **Engage Auto-Feed:** Set the auto-feed control system to the 'Forward' position.
4. **Activate the Motor:** Press the air-activated foot switch to start the motor. The cable will begin to rotate and feed into the pipe.
5. **Clear the Clog:** Allow the cable to slowly advance, letting the rotating cutter work through the obstruction. Do not force the cable. If the cable binds, release the foot switch, set the auto-feed to 'Reverse' for a few seconds to relieve pressure, then switch back to 'Forward' and try again.
6. **Retract the Cable:** Once the clog is cleared and water flows freely, release the foot switch. Set the auto-feed control system to the 'Reverse' position and press the foot switch to retract the cable. Guide the cable back into the drum carefully.
7. **Clean Up:** Turn off the machine, unplug it, and clean the cable and cutters thoroughly after each use.



Image: Proper operation of the VEVOR Drain Cleaner Machine, showing the user guiding the cable into a drain.

## 6. Cutter Selection

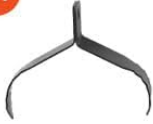
The machine includes four interchangeable cutters, each designed for specific types of clogs and pipe conditions:



# 4 Shapes of Cutters

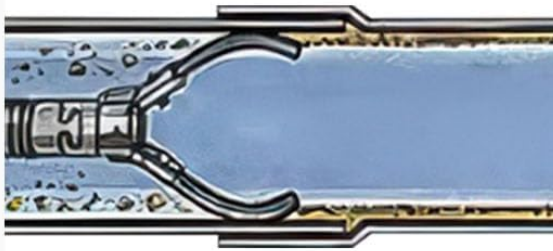
Blast through Any Stubborn Clogs

01



## Arrow Cutter

Used for cutting and scraping

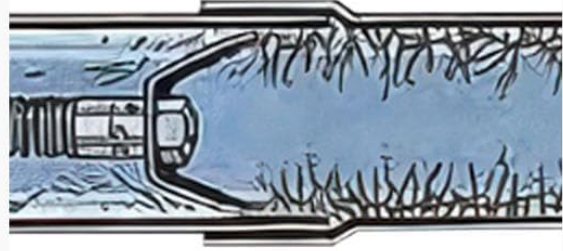


02



## C-Cutter

Used for grease stoppages and cleaning pipe walls



03



## Boring Bulb Cutter

Used for removing loose objects



04



## Spade Cutter

Used for scraping the inside edges of pipes

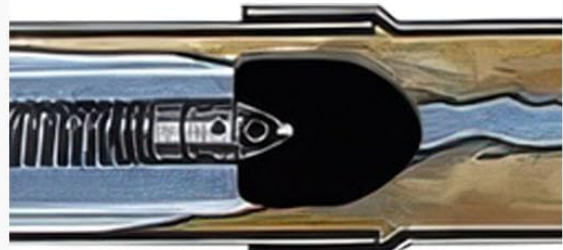


Image: Detailed view of the four interchangeable cutters: Arrow, C-Cutter, Boring Bulb, and Spade.

Cutter Type	Description/Use
Arrow Cutter	Used for cutting and scraping through general blockages.
C-Cutter	Ideal for grease stoppages and cleaning pipe walls.
Boring Bulb Cutter	Designed for removing loose objects and retrieving debris.
Spade Cutter	Used for scraping the inside edges of pipes and removing hardened deposits.

## 7. Applications

This drain cleaner machine is versatile and suitable for various applications in residential and commercial settings:

### Versatile for Various Applications



Sewer



Drain Pipe



Bathroom



Floor Drain

Image: Examples of where the drain cleaner can be used, including sewers, drain pipes, bathrooms, and floor drains.

- **Kitchen Sinks:** Clearing grease and food particle blockages.
- **Bathroom Drains:** Removing hair and soap scum buildup.
- **Floor Drains:** Addressing blockages in basements, garages, and utility rooms.
- **Main Sewer Lines:** Tackling larger obstructions in primary drainage systems.
- **Toilets:** Clearing stubborn toilet clogs.

## 8. Maintenance

Regular maintenance ensures the longevity and optimal performance of your drain cleaner machine.

- **Cable Cleaning:** After each use, clean the cable thoroughly to remove any debris, grease, or foreign matter. Use a stiff brush and appropriate cleaning solution.
- **Cable Inspection:** Periodically inspect the cable for signs of wear, kinks, or corrosion. Replace the cable if any damage is observed.
- **Cutter Maintenance:** Clean cutters after each use. Sharpen or replace cutters as they become dull or damaged.
- **Lubrication:** Apply a light coat of lubricant to moving parts of the auto-feed mechanism and cable drum as needed.
- **Storage:** Store the machine in a dry, clean area away from moisture and extreme temperatures. Ensure the cable is fully retracted into the drum.
- **Electrical Check:** Regularly inspect the power cord, foot switch, and GFCI for any damage.

## 9. Troubleshooting

If you encounter issues with your VEVOR Drain Cleaner Machine, refer to the following common problems and solutions:

- **Machine Does Not Start:**
  - Check if the power cord is securely plugged into a working GFCI outlet.
  - Ensure the foot switch is properly connected and functioning.
  - Verify the main power switch on the machine is in the 'ON' position.
  - Check the GFCI reset button; press to reset if tripped.
- **Cable Does Not Feed or Retract:**
  - Ensure the auto-feed lever is correctly set to 'Forward' or 'Reverse'.
  - Check for obstructions in the auto-feed mechanism.
  - The cable might be severely kinked or jammed in the pipe. Try reversing the motor briefly to relieve tension.
- **Cable Twists or Kinks:**
  - This often occurs when forcing the cable against a stubborn clog. Always allow the cutter to work slowly.
  - Ensure the cable is not extended too far out of the drum without support.
  - If a kink occurs, retract the cable and inspect for damage. Do not use a severely kinked cable.

## 10. Specifications

Feature	Specification
Brand	VEVOR
Model Number	75 FT x 3/8 Inch Drain Cleaning Machine
Cable Length	75 feet
Cable Diameter	3/8 inch

Feature	Specification
Applicable Pipe Diameter	1 inch to 4 inches
Motor Speed	1800 RPM (No-Load)
Item Weight	82.8 pounds
Product Dimensions	22.8 x 18.7 x 36.2 inches
Color	Orange, Black
Included Components	Pipe cleaning device, 4 Cutters

## 11. Warranty and Support

---

For warranty information, technical support, or service inquiries, please contact VEVOR customer support. Refer to the product packaging or the official VEVOR website for the most up-to-date contact details and warranty terms.

**Manufacturer:** VEVOR

**Website:** [www.vevor.com](http://www.vevor.com)