

## myCharge AO30KF-A

# myCharge PowerHub Mini Portable Charger User Manual

Model: AO30KF-A

## INTRODUCTION

---

The myCharge PowerHub Mini is a compact and versatile portable charger designed to provide on-the-go power for your mobile devices. Featuring integrated Lightning and USB-C cables, it eliminates the need for carrying extra cords. With a 3000mAh battery capacity, it offers extended battery life for smartphones, earbuds, and other compatible devices. Its small form factor makes it ideal for travel and daily use.

## SAFETY INFORMATION

---

- Do not expose the device to extreme temperatures, direct sunlight, or high humidity.
- Avoid dropping, puncturing, or disassembling the device.
- Keep out of reach of children.
- Do not use if the device appears damaged or swollen.
- Dispose of the device responsibly according to local regulations.
- Use only the provided or recommended charging cables for recharging the PowerHub Mini.

## PACKAGE CONTENTS

---

Please check the package for the following items:

- myCharge PowerHub Mini Portable Charger
- USB-C to USB-A charging cable (for recharging the PowerHub Mini)
- User Manual (this document)

## PRODUCT OVERVIEW

---

Familiarize yourself with the components of your myCharge PowerHub Mini.



**Figure 1:** Front view of the myCharge PowerHub Mini, highlighting its compact design and the integrated Lightning and USB-C charging cables neatly tucked into the side.

- **Integrated Lightning Cable:** For charging Apple devices (iPhone, AirPods).
- **Integrated USB-C Cable:** For charging USB-C compatible devices.
- **USB-C Input Port:** Used to recharge the PowerHub Mini itself.

- **LED Battery Indicator Lights:** Four small LEDs indicating the remaining battery charge level.
- **Power Button:** Activates the battery indicator and initiates charging.

# Ultimate Power That Fits in your Pocket

Built-in Lightning®  
& USB-C cables

Quickly charge your  
favorite devices

Charge 2 devices  
simultaneously

LED Battery  
level indicator

Pocket-size

Fabric finish



USB-C port

**Figure 2:** Detailed view of the myCharge PowerHub Mini, pointing out the built-in Lightning and USB-C cables, LED battery level indicator, USB-C port, and its pocket-size with fabric finish.

## Charging the PowerHub Mini

Before first use, fully charge your myCharge PowerHub Mini. This ensures optimal performance and battery longevity.

1. Locate the USB-C input port on the side of the PowerHub Mini.
2. Connect the included USB-C to USB-A charging cable to the PowerHub Mini's USB-C input port.
3. Plug the other end of the cable (USB-A) into a USB wall adapter (not included) or a computer's USB port.
4. The LED indicator lights will illuminate and blink to show the charging progress. All four LEDs will be solid when fully charged.
5. Charging time may vary depending on the power source.

## OPERATING INSTRUCTIONS

---

### Charging Your Devices

The PowerHub Mini can charge two devices simultaneously using its integrated cables.

1. **For Apple Devices (Lightning):** Gently pull out the integrated Lightning cable from its storage slot. Insert the Lightning connector into your iPhone, AirPods, or other compatible Apple device.
2. **For USB-C Devices:** Gently pull out the integrated USB-C cable from its storage slot. Insert the USB-C connector into your Android phone, tablet, or other compatible USB-C device.
3. The PowerHub Mini will automatically begin charging your device(s). If charging does not start, press the power button once.
4. The LED indicator lights on the PowerHub Mini will show the remaining battery level during charging.
5. Once your device is charged, or when the PowerHub Mini's battery is depleted, disconnect the cables and return them to their storage slots.



Up to **18 hours**  
of additional  
device usage



**Figure 3:** The myCharge PowerHub Mini simultaneously charging an iPhone via its integrated Lightning cable and AirPods via its integrated USB-C cable, demonstrating its multi-device charging capability.

# Tangle-Free Charging

## With Built-In Lightning & USB-C



**Figure 4:** An overhead view of the myCharge PowerHub Mini, emphasizing its tangle-free design with built-in Lightning and USB-C cables, alongside various mobile devices to illustrate its pocket-sized convenience.

### Checking Battery Level

Press the power button once to view the current battery level indicated by the four LED lights:

- **4 LEDs:** 75-100% charged
- **3 LEDs:** 50-75% charged

- **2 LEDs:** 25-50% charged
- **1 LED:** 0-25% charged (recharge soon)

## MAINTENANCE

---

- **Cleaning:** Wipe the device with a soft, dry cloth. Do not use harsh chemicals or abrasive materials.
- **Storage:** Store the PowerHub Mini in a cool, dry place away from direct sunlight and extreme temperatures.
- **Battery Care:** For optimal battery life, fully charge the device at least once every three months if not in regular use.

## TROUBLESHOOTING

---

Problem	Possible Cause	Solution
PowerHub Mini not charging.	Cable not properly connected; power source issue; damaged cable.	Ensure cables are securely connected. Try a different USB wall adapter or USB port. Inspect the charging cable for damage.
Device not charging from PowerHub Mini.	PowerHub Mini battery depleted; cable not properly connected; device compatibility issue.	Recharge the PowerHub Mini. Ensure the integrated cable is fully inserted into your device. Press the power button on the PowerHub Mini. Verify your device is compatible with Lightning or USB-C charging.
Slow charging.	Using a low-power adapter for recharging; device drawing high current.	When recharging the PowerHub Mini, use a 12W or higher USB wall adapter for faster charging. Ensure your device is not running power-intensive applications while charging.

## SPECIFICATIONS

---

- Model:** AO30KF-A
- Battery Capacity:** 3000mAh
- Output:** 12W (shared across integrated cables)
- Input:** USB-C
- Integrated Cables:** Lightning, USB-C
- Dimensions:** 5.08 x 2.76 x 1.06 inches (12.9 x 7.0 x 2.7 cm)
- Weight:** 4.2 ounces (119 grams)
- Special Features:** Built-in cables, LED indicator lights



# Travel Light With Pocket-Sized Charging



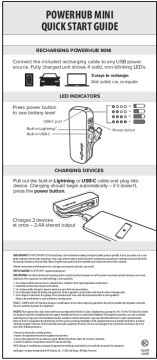
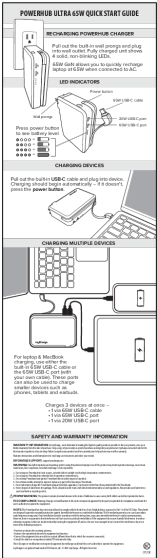


**Figure 5:** The myCharge PowerHub Mini displayed next to a pair of jeans, illustrating its compact dimensions (5.08" high, 2.76" wide, 1.06" deep) and how easily it fits into a pocket for portable charging.

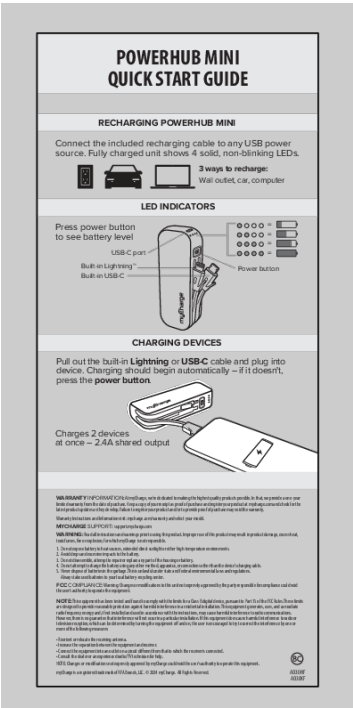
## WARRANTY AND SUPPORT

myCharge products are designed and manufactured to the highest quality standards. For information regarding warranty coverage, technical support, or frequently asked questions, please visit the official myCharge website or contact their customer service directly.



Related Documents

	<p><a href="#">PowerHub Mini Quick Start Guide</a></p> <p>Quick start guide for the myCharge PowerHub Mini portable charger, detailing how to recharge the device and charge other devices using its built-in cables and USB-C port.</p>
	<p><a href="#">myCharge PowerHub Ultra 65W Quick Start Guide</a></p> <p>Get started quickly with the myCharge PowerHub Ultra 65W portable charger. This guide explains how to recharge the power bank, charge your devices (laptops, phones, tablets), and provides essential safety and warranty information.</p>
	<p><a href="#">myCharge Adventure 4400mAh Portable Charger User Guide &amp; Safety Information</a></p> <p>Learn how to recharge and use your myCharge Adventure 4400mAh portable power bank, including important safety warnings, warranty information, and FCC compliance.</p>
	<p><a href="#">myCharge True Universal 3-in-1 Charging Stand Quick Start Guide</a></p> <p>A quick start guide for the myCharge True Universal 3-in-1 Charging Stand, detailing system components, wireless charging instructions for multiple devices, audible tones, and LED charging light indicators.</p>



[PowerHub Mini Quick Start Guide](#)

Quick start guide for the myCharge PowerHub Mini portable charger, detailing how to recharge the device and charge other devices using its built-in cables and USB-C port.

lang:en score:51 filesize: 97.28 K page\_count: 1 document date: 2024-04-03