

## Manuals+

[Q & A](#) | [Deep Search](#) | [Upload](#)

manuals.plus /

- › [Advil](#) /
- › [Advil Targeted Relief Pain Relieving Cream Instruction Manual](#)

**Advil 60000000203477**

# Advil Targeted Relief Pain Relieving Cream Instruction Manual

Brand: Advil  
Model: 60000000203477

## PRODUCT OVERVIEW

Advil Targeted Relief Pain Relieving Cream is an innovative topical formula designed to quickly tackle pain four ways: targets, penetrates, blocks, and relieves. This innovative formula delivers deep penetrating relief right where it hurts. Experience quick application and relief. Our powerful pain-fighting formula starts working on contact, delivering fast relief with a cooling plus a warming sensation that you can feel during application. Also, Targeted Relief doesn't leave your skin feeling dry or greasy, ensuring comfort with every use. This cream is your go-to for deep, penetrating relief that directly targets pain at the source. Its unique formula penetrates to the nerves, working on signaling pathways receptors to provide pain relief. No prescription required. Get back to doing what you love, without the burden of pain. Get ready to head back to college with confidence and stock up ensuring you're ready for anything the academic year throws your way. Choose Advil Targeted Relief Pain Relieving Cream – your ultimate companion for fast, effective pain relief right where you need it most.



Image: Advil Targeted Relief Pain Relieving Cream tube and box.

### Key Benefits:

- One 4 oz Tube of Advil Targeted Relief Pain Relieving Cream - The only topical pain reliever with 4 powerful pain-fighting ingredients.

- Provides a warming & cooling sensation on contact and lasts up to 8 hours.
- Designed to quickly tackle pain four ways: targets, penetrates, blocks, and relieves.
- Fast and powerful relief for minor arthritis pain, muscle, joint and back pain.
- Doesn't leave your skin feeling dry or greasy and easily glides onto skin, ensuring comfort with every use.
- Provides both cooling and warming sensations to enhance the pain relief experience.
- Topical pain relief without needing a prescription.
- HSA and FSA eligible product.

## KEY FEATURES

### Fast-Acting Relief



*Image: Advil Targeted Relief starts working on contact.*

Advil Targeted Relief starts working on contact to provide quick relief, addressing pain at its source.

## Long-Lasting Effect



*Image: Up to 8 hours of powerful relief.*

Experience powerful pain relief that lasts for up to 8 hours, allowing for sustained comfort throughout the day.

## Four Powerful Pain-Fighting Ingredients

# THE **ONLY TOPICAL** WITH



**MENTHOL**

**SOOTHES**



**METHYL  
SALICYLATE**

**STIMULATES  
RELIEF**

**4**

**POWERFUL  
PAIN-FIGHTING  
INGREDIENTS\***



**CAPSAICIN**

**BLOCKS PAIN**



**CAMPHOR**

**DESENSITIZES**

**Does not contain ibuprofen.**

\*Among the leading pain relief brands

*Image: The only topical with 4 powerful pain-fighting ingredients: Menthol, Methyl Salicylate, Capsaicin, Camphor.*

This cream contains four active ingredients: Camphor (desensitizes), Capsaicin (blocks pain), Menthol (soothes), and Methyl Salicylate (stimulates relief), working together for comprehensive pain relief.

## **Targeted Relief for Various Pains**

# ***FAST, POWERFUL RELIEF OF***



**ARTHRITIS  
& JOINT PAIN**



**SPRAINS  
& STRAINS**



**BACK &  
BODY ACHES**



**SORE  
MUSCLES**

*Image: Fast, powerful relief of Arthritis & Joint Pain, Back & Body Aches, Sprains & Strains, Sore Muscles.*

Advil Targeted Relief effectively targets minor arthritis pain, joint pain, lower back pain, muscle pain, sprains, and strains.

**Non-Greasy Formula**



STARTS SOOTHING  
**ON CONTACT**



**GLIDES  
ON EASILY**



INSTANTLY MASSAGES  
**INTO SKIN**

*Image: Cream glides on easily and instantly massages into skin.*

The cream glides on easily and absorbs quickly without leaving a greasy or dry residue, ensuring comfort with every use.

## INGREDIENTS

<b>Drug Facts</b>	
<b>Active ingredients</b>	<b>Purposes</b>
Camphor 3.1% .....	Topical analgesic
Capsaicin 0.025% .....	Topical analgesic
Menthol 10% .....	Topical analgesic
Methyl salicylate 15% .....	Topical analgesic
<b>Uses</b>	
Temporarily relieves minor aches and pains of muscles and joints associated with:	
<ul style="list-style-type: none"> <li>■ arthritis    ■ simple backache    ■ sprains</li> <li>■ strains      ■ bruises</li> </ul>	
<b>Warnings</b>	
<b>For external use only</b>	
■ avoid contact with eyes. If eye contact occurs, rinse thoroughly with water.	
<b>Do not use</b>	
<ul style="list-style-type: none"> <li>■ on wounds or damaged skin</li> <li>■ with a heating pad</li> <li>■ if you are allergic to any ingredients in this product</li> </ul>	
<b>Ask a doctor before use if you have</b>	
■ redness over the affected area	
<b>When using this product</b>	
■ do not bandage tightly	
<b>Stop use and ask a doctor if</b>	
<ul style="list-style-type: none"> <li>■ condition worsens or if symptoms last for more than 7 days</li> <li>■ symptoms clear up and occur again within a few days</li> <li>■ rash, itching or skin irritation develops</li> </ul>	
If pregnant or breast-feeding, ask a health professional before use. <b>Keep out of reach of children.</b> If swallowed, get medical help or contact a Poison Control Center right away.	
<b>Directions</b>	
■ use only as directed	
■ adults and children 12 years and older: apply to affected area not more than 3 to 4 times daily	
■ children under 12 years of age: consult your doctor	
■ wash hands after applying	
<b>Other information</b> ■ store between 20-25°C (68-77°F)	
<b>Inactive ingredients</b>	
carbomer homopolymer, cetyl alcohol, cetyl esters wax, emulsifying wax, oleth-3-phosphate, purified water, sodium hydroxide, stearic acid	
<b>Questions or comments?</b> Call toll-free 1-800-88-ADVIL	



Image: Drug Facts label showing active and inactive ingredients, uses, warnings, and directions.

### Active Ingredients:

Ingredient	Concentration	Purpose
Camphor	3.1%	Topical analgesic
Capsaicin	0.025%	Topical analgesic
Menthol	10%	Topical analgesic
Methyl salicylate	15%	Topical analgesic

### Inactive Ingredients:

carbomer homopolymer, cetyl alcohol, cetyl esters wax, emulsifying wax, oleth-3-phosphate, purified water, sodium hydroxide, stearic acid.

## USAGE INSTRUCTIONS

### How to Apply

# HOW TO REMOVE SAFETY SEAL & USE

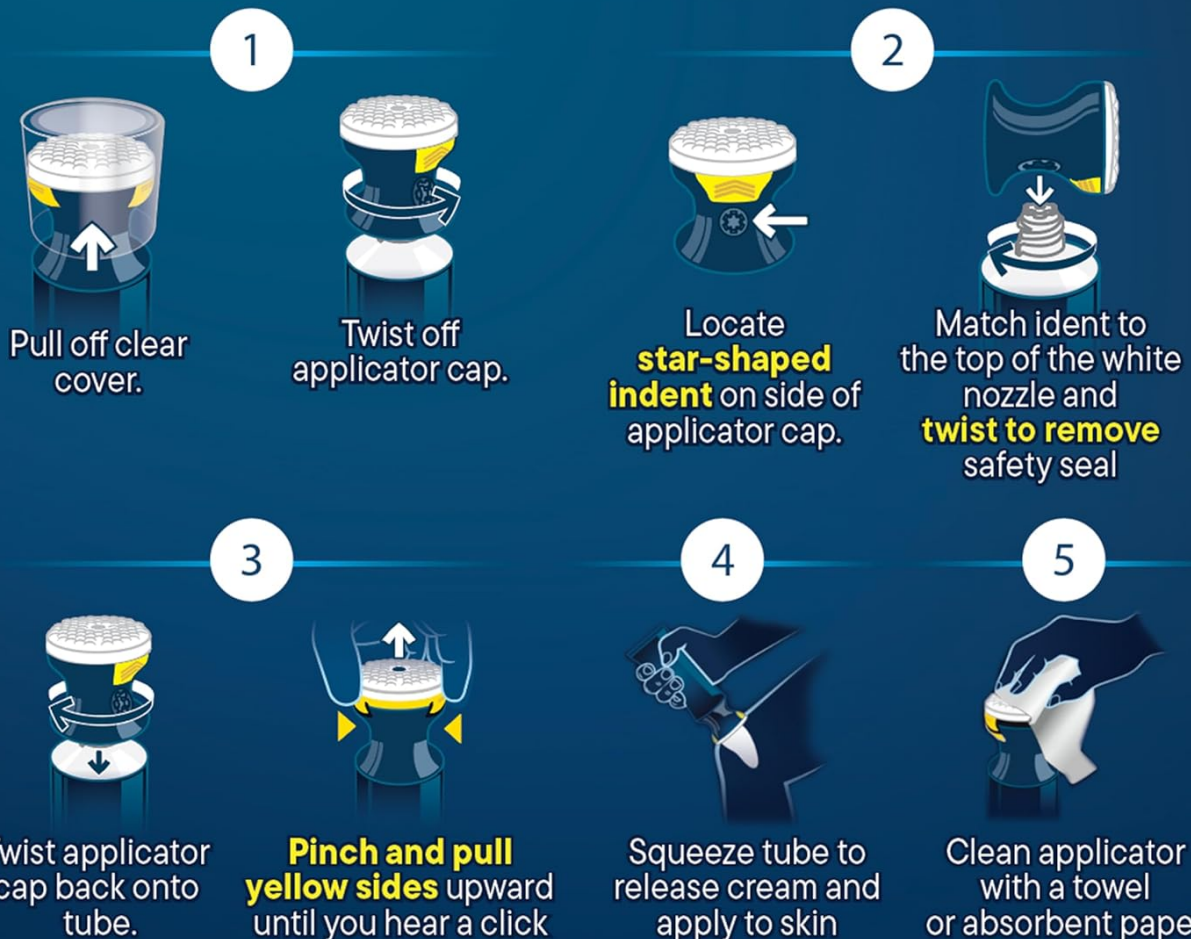
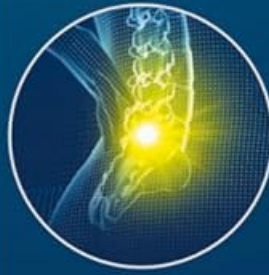


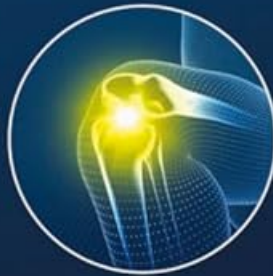
Image: Step-by-step guide on how to remove the safety seal and apply the cream.

1. Clean and dry the affected area before application.
2. Pull off the clear cover.
3. Twist off the applicator cap.
4. Locate the star-shaped indent on the side of the applicator cap.
5. Match the indent to the top of the white nozzle and twist to remove the safety seal.
6. Twist the applicator cap back onto the tube.
7. Pinch and pull the yellow sides upward until you hear a click.
8. Gently squeeze the tube to release cream and apply to the skin.
9. Massage the cream into the skin until absorbed.
10. Clean the applicator with a towel or absorbent paper after each use.

# DEEP PENETRATING RELIEF



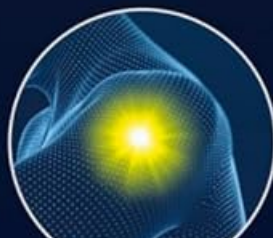
**BACK &  
BODY ACHES**



**ARTHRITIS &  
JOINT PAIN**



**SPRAINS &  
STRAINS**



**SORE  
MUSCLES**



*Image: Visual icons for how to use the cream.*

### **Application Directions:**

- Use only as directed.
- For adults and children 12 years and older: Apply to the affected area not more than 3 to 4 times daily.
- For children under 12 years of age: Consult your doctor.
- Wash hands thoroughly after applying.

### **Official Product Videos:**

*Video: Advil Targeted Relief. This video provides a general overview of the product's benefits and how it works.*

*Video: Advil Targeted Relief Pain Relieving Cream Video. This video demonstrates the application and highlights the cream's features.*

## **SAFETY INFORMATION & WARNINGS**

<b>Drug Facts</b>	
<b>Active ingredients</b>	<b>Purposes</b>
Camphor 3.1% .....	Topical analgesic
Capsaicin 0.025% .....	Topical analgesic
Menthol 10% .....	Topical analgesic
Methyl salicylate 15% .....	Topical analgesic
<b>Uses</b>	
Temporarily relieves minor aches and pains of muscles and joints associated with:	
<ul style="list-style-type: none"> <li>■ arthritis    ■ simple backache    ■ sprains</li> <li>■ strains    ■ bruises</li> </ul>	
<b>Warnings</b>	
<b>For external use only</b>	
■ avoid contact with eyes. If eye contact occurs, rinse thoroughly with water.	
<b>Do not use</b>	
<ul style="list-style-type: none"> <li>■ on wounds or damaged skin</li> <li>■ with a heating pad</li> <li>■ if you are allergic to any ingredients in this product</li> </ul>	
<b>Ask a doctor before use if you have</b>	
■ redness over the affected area	
<b>When using this product</b>	
■ do not bandage tightly	
<b>Stop use and ask a doctor if</b>	
<ul style="list-style-type: none"> <li>■ condition worsens or if symptoms last for more than 7 days</li> <li>■ symptoms clear up and occur again within a few days</li> <li>■ rash, itching or skin irritation develops</li> </ul>	
If pregnant or breast-feeding, ask a health professional before use. <b>Keep out of reach of children.</b> If swallowed, get medical help or contact a Poison Control Center right away.	
<b>Directions</b>	
■ use only as directed	
■ adults and children 12 years and older: apply to affected area not more than 3 to 4 times daily	
■ children under 12 years of age: consult your doctor	
■ wash hands after applying	
<b>Other information</b> ■ store between 20-25°C (68-77°F)	
<b>Inactive ingredients</b>	
carbomer homopolymer, cetyl alcohol, cetyl esters wax, emulsifying wax, oleth-3-phosphate, purified water, sodium hydroxide, stearic acid	
<b>Questions or comments?</b> Call toll-free 1-800-88-ADVIL	



Image: Drug Facts label detailing safety information and warnings.

- For external use only. Avoid contact with eyes. If eye contact occurs, rinse thoroughly with water.
- Do not use on wounds or damaged skin.
- Do not use with a heating pad.
- Do not use if you are allergic to any ingredients in this product.
- Ask a doctor before use if you have redness over the affected area.
- When using this product, do not bandage tightly.
- Stop use and ask a doctor if: condition worsens or if symptoms last for more than 7 days; symptoms clear up and occur again within a few days; rash, itching or skin irritation develops.
- If pregnant or breast-feeding, ask a health professional before use.
- Keep out of reach of children. If swallowed, get medical help or contact a Poison Control Center right away.

## STORAGE

Store Advil Targeted Relief Pain Relieving Cream between 20-25°C (68-77°F).

## SPECIFICATIONS

Attribute	Value
Product Dimensions	1.7 x 2.6 x 8 inches
Item Model Number	60000000203477
Date First Available	February 2, 2024
Manufacturer	Haleon US Services Inc.
ASIN	B0CTTLFN9G
Country of Origin	USA
Brand	Advil
Special Feature	Targeted, Fast Acting
Item Weight	4.94 Ounces
Product Benefits	Pain Relief

## TROUBLESHOOTING

If you experience any issues or unexpected reactions while using Advil Targeted Relief Pain Relieving Cream, discontinue use immediately. Consult a healthcare professional if symptoms persist or worsen. Ensure you are following all usage directions and warnings provided on the packaging and in this manual.

## WARRANTY & SUPPORT

For specific warranty information or product support, please refer to the product packaging or contact the manufacturer directly. You can also visit the official Advil brand store for more information: [Advil Brand Store](#).