

M10-kk

Buds M10 TWS Earbuds User Manual

Model: M10-kk

PRODUCT OVERVIEW

The Buds M10 TWS Earbuds are designed to provide a high-quality audio experience with advanced features for convenience and comfort. These wireless earbuds offer extended battery life, smart touch controls, and a built-in microphone for hands-free communication. The included charging case also functions as a portable power bank.

Key Features

- Wireless Bluetooth v5.1 connectivity for tangle-free listening.
- High-quality audio with noise-canceling technology for immersive sound.
- Extended playtime of up to 38 hours with the charging case.
- Smart Touch Controls for easy management of music and calls.
- Built-in microphone for clear hands-free calling.
- 2000mAh rechargeable lithium polymer battery in the charging case.
- Charging case doubles as a portable power bank for mobile devices.
- Comfortable in-ear design for all-day wearing.

PRODUCT COMPONENTS

The package includes the following items:

- M10 TWS Earbuds (Left and Right)
- Charging Case with Portable Power Bank Function
- USB Charging Cable
- User Manual

SETUP

Initial Charging

Before first use, fully charge the earbuds and the charging case. Place the earbuds into the charging case. Connect

the USB charging cable to the charging port on the case and plug the other end into a compatible USB power source (e.g., wall adapter, computer USB port). The digital display on the case will indicate the charging status and battery level.



Image: Earbuds in their charging case, showing the digital display indicating battery levels and charging status. The display also shows estimated call and play times.

Pairing with a Device

1. Ensure the earbuds are charged.
2. Open the charging case. The earbuds will automatically enter pairing mode (indicated by flashing lights on the earbuds).
3. On your mobile device (smartphone, tablet, laptop), go to the Bluetooth settings.
4. Search for available devices. You should see "M10" or "Buds M10" in the list.
5. Select "M10" to connect. Once connected, a voice prompt will confirm successful pairing.



Smart Touch Control Upgraded

The earphone is equipped with a high sensitive touch panel, which can quickly complete various operations by gently touching intelligent recognition

Image: The M10 earbuds placed next to a smartphone, illustrating their readiness for connection and music playback. This image highlights the smart touch control feature.

Android & IOS Compatible



Image: The M10 earbuds and their charging case displayed alongside various mobile devices, including Android and iOS smartphones and a tablet, demonstrating broad compatibility.

OPERATING INSTRUCTIONS

Smart Touch Controls

The M10 earbuds feature highly sensitive touch panels for easy control of various functions. Gently touch the earbud surface to perform the following operations:

- **Play/Pause:** Single tap on either earbud.
- **Next Song:** Double tap on the right earbud.
- **Previous Song:** Double tap on the left earbud.
- **Answer/End Call:** Single tap on either earbud during an incoming call or active call.
- **Reject Call:** Long press (2 seconds) on either earbud during an incoming call.
- **Activate Voice Assistant:** Triple tap on either earbud.

- **Volume Up:** Long press on the right earbud.
- **Volume Down:** Long press on the left earbud.

Ai Smart * 3D touch

The earphone has a built-in high-sensitivity touch panel, which can intelligently recognize your intentions with a light touch and quickly complete a variety of operations

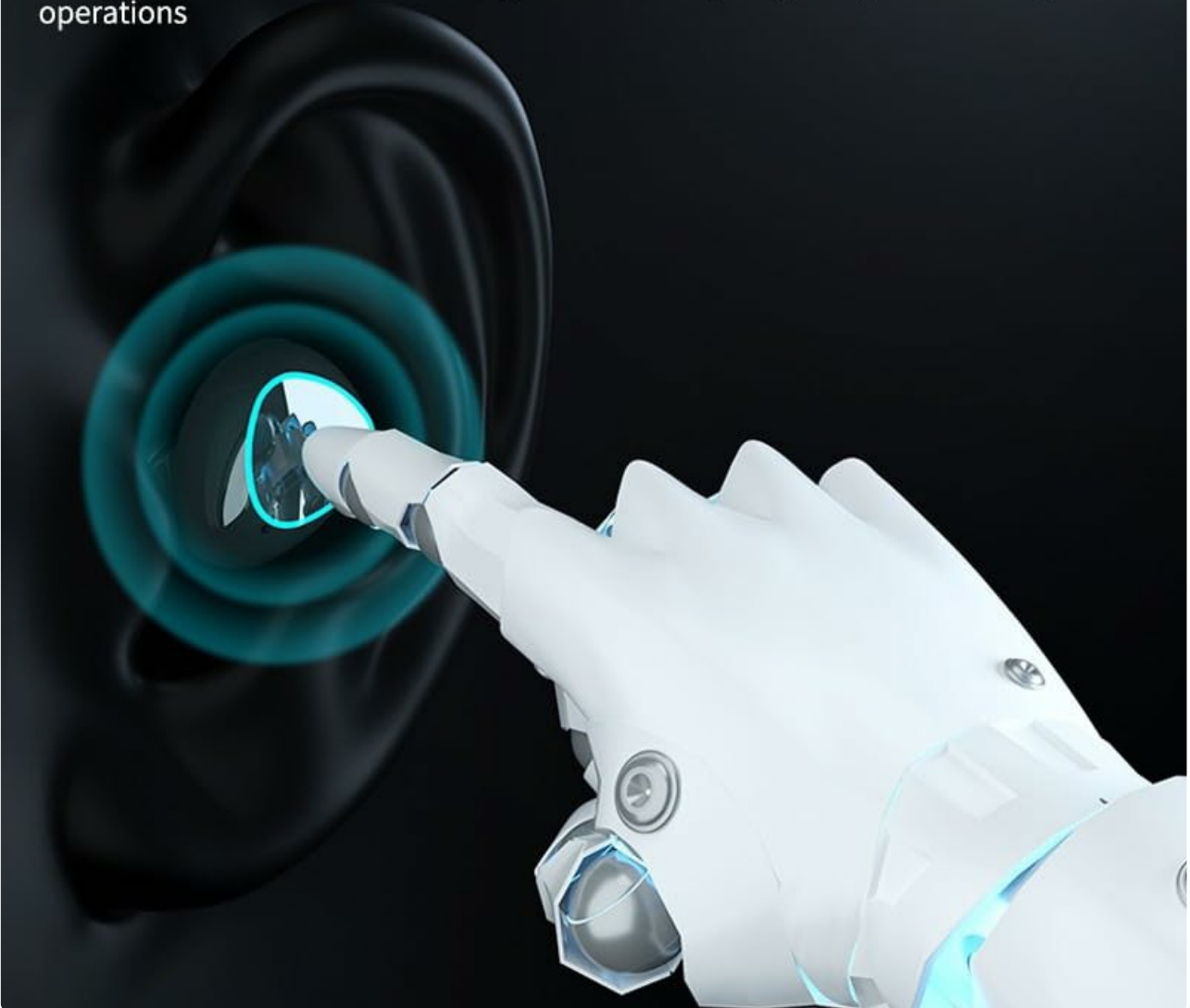


Image: A stylized depiction of a finger interacting with the earbud's touch panel, highlighting the AI Smart 3D touch control feature for various operations.

Portable Power Bank Function

The large-capacity charging case can be used not only to charge the earbuds but also as a portable power bank to charge your mobile phone or other small USB-powered devices. Simply connect your device to the USB output port on the charging case using a compatible cable.

I can charge mobile phone

Portable power bank

The large-capacity charging case can not only charge the headset, but also charge the mobile phone to get rid of the trouble of running out of battery.



Image: The M10 earbud charging case connected via a USB cable to a smartphone, demonstrating its functionality as a portable power bank to charge external devices.

Dual Earbud and Single Earbud Use

The M10 earbuds support both dual earbud stereo mode and single earbud (mono) mode. You can use both earbuds for an immersive stereo experience or use one earbud independently for calls or listening while remaining aware of your surroundings. To use a single earbud, simply take one out of the case; it will automatically connect if previously paired.

Two earphones can be connected to a mobile phone at the same time, sharing a music with friends and lovers, or can be connected with one ear, equivalent to two independent earphones.



Image: Two smartphones are shown with the M10 earbuds and charging case, illustrating the capability for the earbuds to connect to multiple devices or be used as two independent earphones.

MAINTENANCE

Cleaning

To ensure optimal performance and hygiene, regularly clean your earbuds and charging case:

- Use a soft, dry, lint-free cloth to wipe the earbuds and charging case.
- For stubborn dirt, slightly dampen the cloth with water or a mild, non-abrasive cleaner.
- Do not use harsh chemicals, aerosols, or abrasive cleaners.
- Ensure the charging contacts on both the earbuds and the case are clean and free of debris.

Storage

When not in use, store the earbuds in their charging case to protect them from dust, damage, and to keep them charged. Store the device in a cool, dry place away from direct sunlight and extreme temperatures.

TROUBLESHOOTING

If you encounter issues with your M10 TWS Earbuds, refer to the table below for common problems and their solutions:

Problem	Possible Cause	Solution
Earbuds not pairing	Low battery; Earbuds not in pairing mode; Bluetooth off on device; Already connected to another device.	Charge earbuds and case; Ensure earbuds are in pairing mode (open case); Turn on Bluetooth on your device; Disconnect from other devices.
No sound from earbuds	Volume too low; Earbuds not connected; Media source paused.	Increase volume on earbuds and device; Reconnect earbuds; Check media playback on your device.
Charging case not charging	Faulty cable/adaptor; Loose connection; Dirty charging port.	Try a different USB cable and adaptor; Ensure connections are secure; Clean charging port.
One earbud not working	Low battery on one earbud; Earbuds not properly synced.	Place both earbuds back in the case, close, then reopen to re-sync; Ensure both are charged.

SPECIFICATIONS

Detailed technical specifications for the Buds M10 TWS Earbuds:

Feature	Detail
Model Name	M10-kk (MADHUR ENTERPRISE Works 309)
Connectivity Technology	Wireless (Bluetooth v5.1)
Noise Control	Sound Isolation
Control Method	Touch
Battery Capacity (Case)	2000mAh (Lithium Polymer)
Playtime	Up to 38 hours (with charging case)
Charging Time	Approx. 1 hour (earbuds)
Material	Plastic
Form Factor	In Ear
Microphone Format	Built-In
Impedance	32 Ohm
ASIN	B0CTTCYYSV



Image: An exploded view diagram of an earbud, showcasing its internal components. Below the diagram, a graph illustrates the effect of noise reduction technology, comparing sound levels before and after processing.

WARRANTY AND SUPPORT

This product is covered by a standard manufacturer's warranty. For specific warranty terms, conditions, and duration, please refer to the documentation included with your purchase or contact the retailer. For technical support or assistance with product issues not covered in this manual, please reach out to the customer service provided by your point of purchase.