

## Manuals+

[Q & A](#) | [Deep Search](#) | [Upload](#)

manuals.plus /

- › [Boxer](#) /
- › [Boxer Heavy Duty Aluminum L Tracks 6" - 4Pack – User Manual](#)

### Boxer 31026-6

# Boxer Heavy Duty Aluminum L Tracks 6" – User Manual

Model: 31026-6

Your reliable partner for secure cargo management.

## 1. INTRODUCTION

Thank you for choosing Boxer Heavy Duty Aluminum L Tracks. These tracks are designed to provide a robust and versatile tie-down system for securing various types of cargo in trailers, vans, trucks, motorcycles, ATVs, and UTVs. Crafted from durable aluminum, they feature a wider stance for enhanced strength and angled edges for easy loading. This manual provides essential information for the proper installation, operation, and maintenance of your L Tracks.

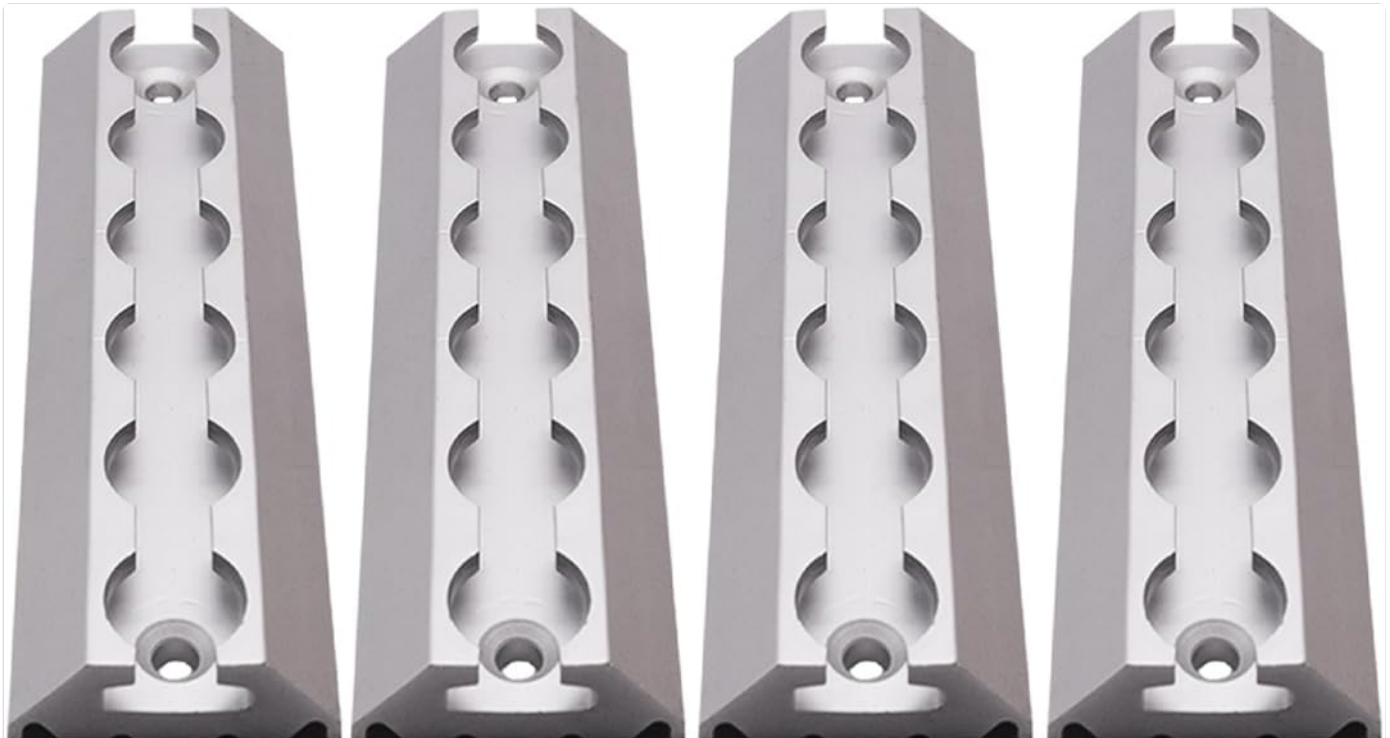


Figure 1.1: Four Boxer Heavy Duty Aluminum L Tracks, 6 inches in length, designed for secure cargo tie-down.

## 2. SAFETY INFORMATION

Always prioritize safety when installing and using tie-down systems. Failure to follow these guidelines may result in property damage, injury, or death.

- **Inspect Before Use:** Before each use, inspect tracks and any associated fittings for signs of wear, damage, or corrosion.

Do not use damaged components.

- **Proper Installation:** Ensure tracks are securely fastened to a structurally sound surface capable of withstanding the intended load. Use appropriate hardware (not included) for your specific application.
- **Load Capacity:** Understand the load capacity of your L Tracks and associated tie-down equipment. Do not exceed these limits.
- **Secure Cargo:** Always ensure cargo is properly balanced and secured to prevent shifting during transit.
- **Regular Checks:** Periodically check the tightness of fasteners and the security of your cargo during long trips.

### 3. SETUP AND INSTALLATION

---

The Boxer L Tracks are designed for straightforward installation. Installation hardware is not included and must be selected based on your specific mounting surface and application requirements.

#### 3.1 Dimensions and Design

Each L Track measures 6 inches in total length and 1.75 inches in total width. Their design features a wider stance for increased strength and durability, along with angled edges that create a no-block ramp feature for easy rolling of wheels.

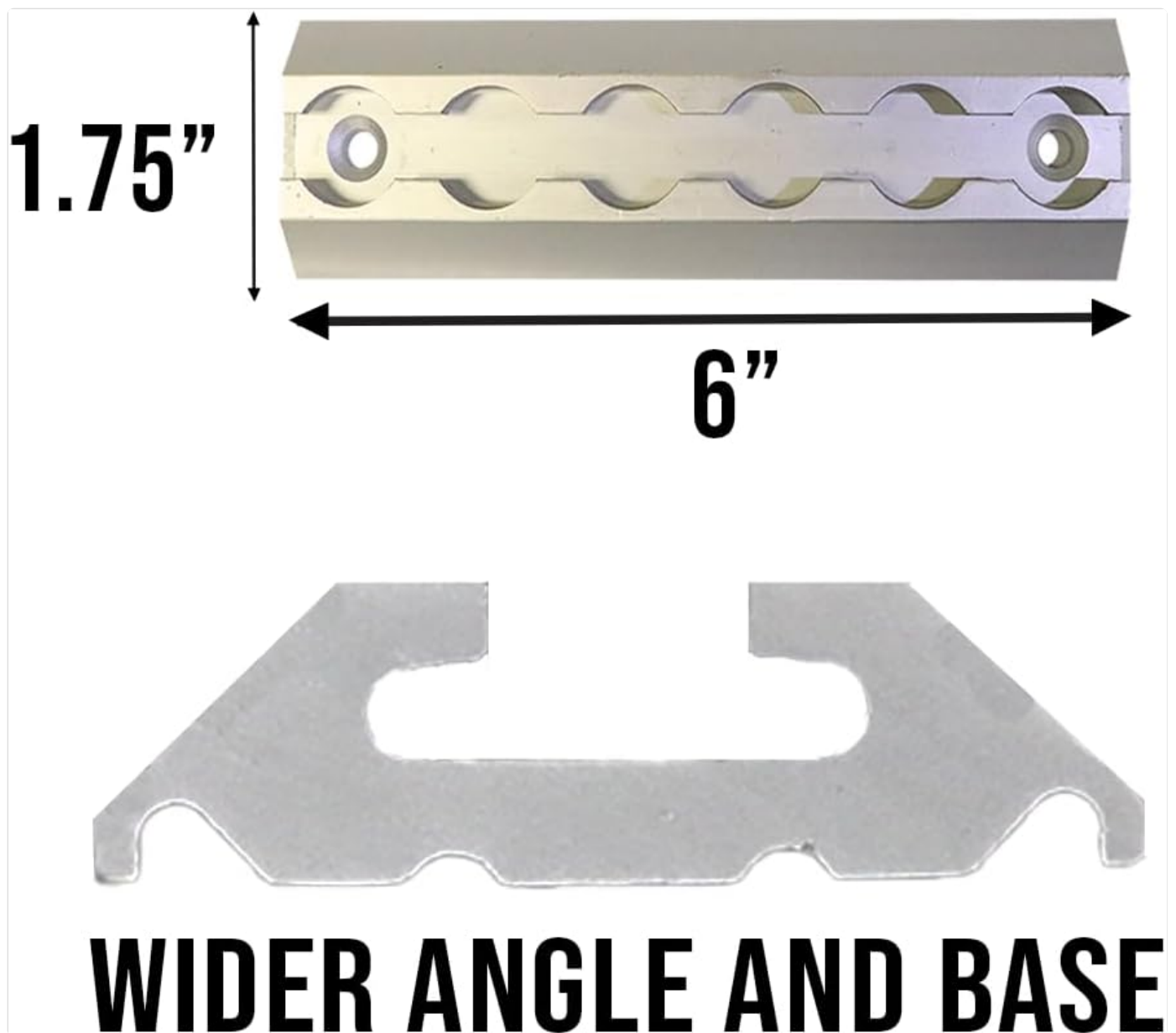


Figure 3.1: The L Track dimensions, highlighting its 6-inch length and 1.75-inch width, designed for a wider and more stable base.

#### 3.2 Mounting Instructions

The tracks come with two pre-drilled piloted holes, one on each end, to facilitate easy mounting.

1. **Choose Location:** Determine the optimal location for your L Tracks. They can be installed on the floor or on the side walls of your vehicle or trailer. Ensure the mounting surface is clean, dry, and structurally sound.
2. **Select Hardware:** Acquire appropriate fasteners (e.g., bolts, screws, nuts, washers) suitable for your mounting surface material (e.g., wood, metal, composite) and the expected load. The fastener head should fit securely within the piloted holes.
3. **Position Track:** Place the L Track in the desired position and mark the locations for the pre-drilled holes onto the mounting surface.
4. **Drill Pilot Holes (if necessary):** If your mounting surface requires it, drill pilot holes according to the size of your chosen fasteners.
5. **Secure Track:** Align the L Track with the drilled holes and securely fasten it using your chosen hardware. Ensure all fasteners are tightened to the manufacturer's specifications for the hardware. Do not overtighten, as this may damage the track or mounting surface.



Figure 3.2: Illustrates the ease of installation, showing a screw being driven into one of the two pre-drilled holes on the L Track.

## 4. OPERATING THE L TRACK SYSTEM

Once installed, your Boxer L Tracks provide a flexible and secure anchor point for various tie-down applications. The system works by inserting compatible L Track fittings (sold separately) into the track.

### 4.1 Using Track Fittings

Optional track fittings are available for different applications. These fittings are designed to slide along the track, allowing for precise adjustment and tightening of your load.

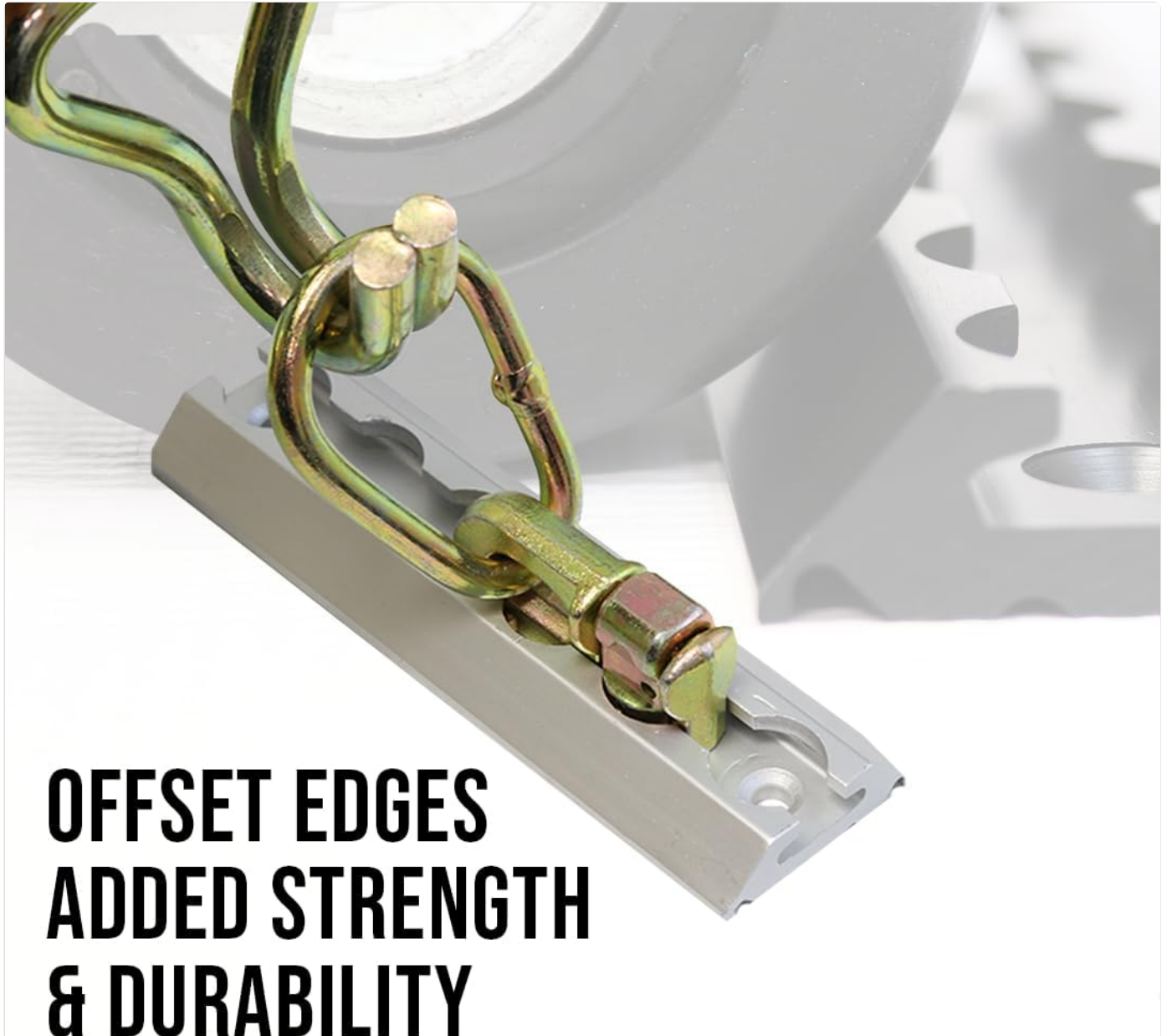
1. **Insert Fitting:** To insert a fitting, depress its spring-loaded mechanism (if applicable) and slide it into the track's slot.
2. **Position and Lock:** Slide the fitting to the desired position along the track. Release the mechanism to lock the fitting securely in place. Ensure the fitting is fully engaged and cannot move freely before applying tension.
3. **Attach Tie-Downs:** Connect your tie-down straps, ropes, or chains to the fitting's attachment point (e.g., D-ring, stud).
4. **Secure Cargo:** Apply tension to your tie-downs to secure the cargo. Ensure even distribution of force and that the cargo is stable.



Figure 4.1: An L Track shown with a compatible D-ring fitting, demonstrating how accessories integrate with the track system for cargo securement.

### 4.2 Enhanced Strength and Durability

The L Tracks feature offset edges, which contribute to added strength and durability, ensuring your cargo remains securely fastened even under dynamic conditions.



## OFFSET EDGES ADDED STRENGTH & DURABILITY

Figure 4.2: Detail of the L Track's offset edges, a design feature that enhances the overall strength and longevity of the tie-down system.

### 5. MAINTENANCE

---

Proper maintenance will extend the life and ensure the continued performance of your Boxer Heavy Duty Aluminum L Tracks.

- **Cleaning:** Periodically clean the tracks to remove dirt, debris, and road grime. Use a mild soap and water solution, then rinse thoroughly and dry. Avoid abrasive cleaners or solvents that could damage the aluminum finish.
- **Inspection:** Regularly inspect the tracks for any signs of damage, such as bends, cracks, deep scratches, or corrosion. Pay close attention to the pre-drilled holes and the track slots.
- **Fastener Check:** Ensure all mounting fasteners remain tight. Re-tighten if necessary, but do not overtighten.
- **Storage:** If tracks are removed for storage, store them in a clean, dry environment to prevent corrosion and damage.

### 6. TROUBLESHOOTING

---

While Boxer L Tracks are designed for durability, minor issues can sometimes arise. Here are some common scenarios and solutions:

- **Fittings Sticking in Track:**

*Cause:* Dirt, debris, or corrosion in the track slot.

*Solution:* Clean the track thoroughly using a brush and mild soap solution. Ensure the track is dry. Apply a light silicone spray lubricant if needed, but avoid oil-based lubricants that can attract dirt.

- **Loose Track:**

*Cause:* Mounting fasteners have loosened over time.

*Solution:* Re-tighten all mounting fasteners. If a fastener is stripped or damaged, replace it with appropriate new hardware.

- **Track Damage (Bends/Cracks):**

*Cause:* Excessive force, impact, or overloading.

*Solution:* If the track is bent or cracked, its structural integrity may be compromised. For safety, replace the damaged track immediately. Do not attempt to repair it.

## 7. SPECIFICATIONS

Feature	Detail
Product Name	Heavy Duty Aluminum L Tracks
Model Number	31026-6
Material	Aluminum
Total Length	6 inches
Total Width	1.75 inches
Pre-drilled Holes	2 (one on each end)
Package Quantity	4 Tracks
Item Weight (per track)	Approximately 9.6 ounces
Manufacturer	Boxer Tool

## 8. WARRANTY AND SUPPORT

Boxer is committed to providing high-quality products. For specific warranty information or technical support regarding your Heavy Duty Aluminum L Tracks, please refer to the official Boxer website or contact Boxer customer service directly. You can also visit the official Boxer store on Amazon for additional product information and accessories.

**Boxer Store:** <https://www.amazon.com/stores/BoxerTools/page/BC49FDB7-9FA7-466B-A09C-0FFB3AF102B8>

© 2024 Boxer. All rights reserved.

This manual is for informational purposes only. Specifications are subject to change without notice.