



[Manuals.plus](#) /

› [Likebike](#) /

› Likebike Seeker 26" Electric Bike User Manual

Likebike Seeker

Likebike Seeker 26" Electric Bike

USER MANUAL

1. Introduction

Welcome to the world of electric cycling with your new Likebike Seeker 26" Electric Bike. This manual provides essential information for the safe assembly, operation, maintenance, and troubleshooting of your e-bike. Please read it thoroughly before your first ride to ensure optimal performance and safety.



The Likebike Seeker 26" Electric Bike, featuring a powerful motor and removable battery, designed for commuting and recreational use.

2. Safety Guidelines

Your safety is paramount. Always adhere to the following guidelines:

- Always wear a helmet that meets safety standards.
- Familiarize yourself with local traffic laws and regulations for electric bicycles.
- Perform a pre-ride inspection before each use, checking brakes, tires, and battery.
- Do not operate the e-bike under the influence of alcohol or drugs.
- Ensure the battery is securely locked in place before riding.
- This electric bike is UL 2849 Certified, ensuring compliance with electrical system safety standards.



The UL 2849 certification sticker, indicating the electric bike's compliance with safety standards for electrical systems.

3. Setup

3.1 Assembly

Your Likebike Seeker arrives 90% pre-assembled. The remaining assembly typically includes attaching the front wheel, handlebars, pedals, and seat. Refer to the included installation tool set and follow the detailed instructions in the printed manual for precise steps. If you encounter any difficulties, please contact customer support.

Powerful Brushless Motor

LIKEBIKE Seeker Powerful hub motors make riding easier, allowing you to enjoy every leg of your journey.



20MPH
Max Speed



SHIMANO
7 Speed Gears



50 N.M
Motor Torque

Key components of the electric bike laid out for assembly, including the frame, wheels, and accessories.

3.2 Battery Installation and Removal

The 324Wh (9Ah) lithium-ion battery is semi-hidden and detachable for convenience and security. To install, align the battery with the frame's slot and push until it clicks into place. Use the provided key to lock it. To remove, unlock with the key and gently pull the battery out.

Front Shock Absorption System

Equipped with a high-quality front suspension fork. The shock absorber system ensures a smooth, stable ride on both rough trails and city streets.



A close-up view of the Likebike electric bike's frame, highlighting the integrated and removable battery design.

3.3 Initial Battery Power On/Off

Before powering on the display, you must activate the battery. Press and hold the button located above the battery for approximately 6 seconds until a green indicator light illuminates. This signifies the battery is powered on. To power off the battery, long press the same button for 2 seconds until the red light is on.

Your browser does not support the video tag.

This video demonstrates how to power on and off the battery of your Likebike electric bike, showing the indicator light changes.

4. Operating Your Electric Bike

4.1 Powering On the Display

After ensuring the battery is powered on (green indicator light), press the power button on the handlebar-mounted display unit. The display will light up, indicating the e-bike is ready for operation.

4.2 Riding Modes

Your Seeker e-bike offers versatile riding options:

- **Pure Electric Mode:** Engage the throttle for motor-only propulsion without pedaling.
- **Pedal-Assist Mode (PAS):** The motor provides assistance as you pedal. There are 5 levels of pedal-assist, allowing you to customize the amount of power assistance.
- **Classic Bike Mode:** Ride the bike like a traditional bicycle with no motor assistance.
- **Cruise Mode:** Maintain a consistent speed without continuous throttle input.
- **Walking Electric Assist Mode:** Provides low-speed assistance for walking the bike alongside you.

Smart Color LCD display

Tracking your rides



Bike Mode

Power OFF,
Normal Bike.
Just Pedaling

Pedal Assist Mode

Power ON,
Without The Throttle
Just Pedaling

Throttle Mode

Power ON, NO Need
Topedal Just Throttle

More functions

Cruise Indication
Walking Mode



Visual representation of the four riding modes and five pedal-assist levels available on the Likebike Seeker.

4.3 Smart Color LCD Display

The colorful LCD display provides real-time riding data, including current speed, single ride mileage, total ride mileage, battery level, and pedal assist level. You can customize the number of assist levels and corresponding speeds through the display settings. Use the control buttons next to the display to navigate menus and adjust settings.

Light Weight Geometry Frame



58.6LBS



High-stepFrame



Internal
Electrical Cable



Stable & Safety



A close-up of the e-bike's handlebars, showing the smart color LCD display, control buttons, and throttle.

4.4 Gears and Brakes

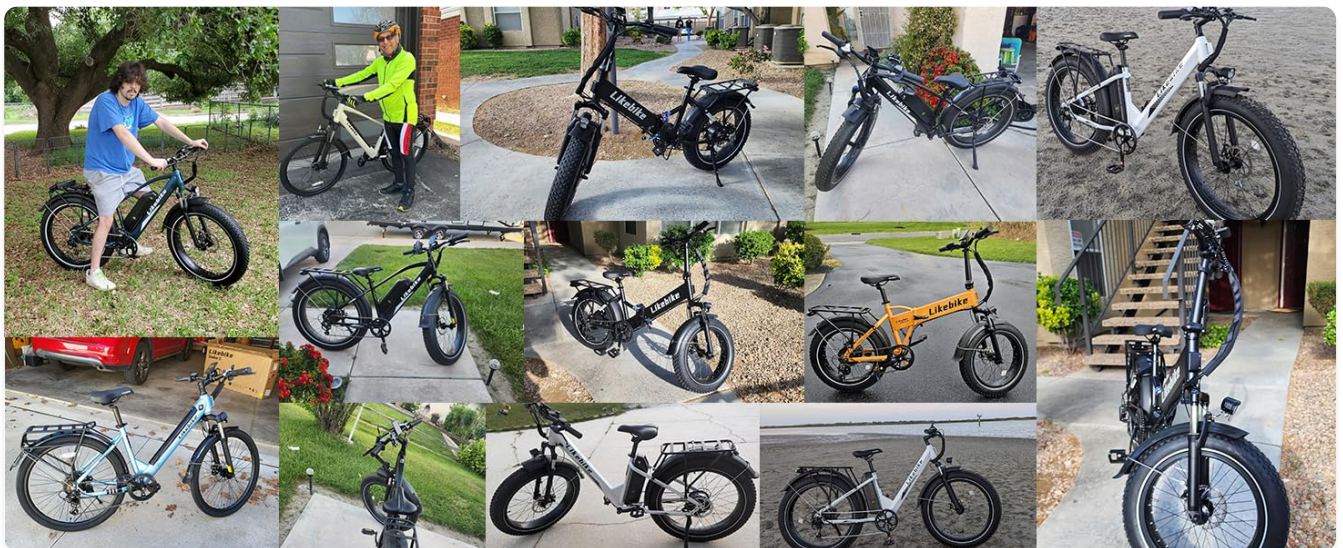
The 7-speed gear system allows for flexible maneuverability and efficient climbing. Use the Shimano rapid-fire shifter to change gears smoothly. The front and rear mechanical disc brakes provide quick, stable, and powerful stopping power in various road conditions. Always apply both brakes simultaneously for optimal control.



Detailed view of the front and rear disc brake systems, essential for safe and responsive stopping.

4.5 Lights and Horn

The integrated bright headlight and flashable rear reflector enhance visibility in low-light conditions. The lights are powered by the main bicycle battery. Use the electric horn to alert pedestrians and other riders when necessary.



The integrated front headlight and rear taillight, providing essential illumination for night riding and increased safety.

5. Maintenance and Care

Regular maintenance ensures the longevity and safe operation of your e-bike.

- **Battery Care:** Charge the battery regularly, even if not in use, to maintain its health. Avoid fully discharging the battery. Store the battery in a cool, dry place.
- **Tire Pressure:** Check tire pressure before each ride. Maintain the recommended PSI (pounds per square inch) as indicated on the tire sidewall for optimal performance and safety.
- **Brake Adjustment:** Periodically check brake pads for wear and ensure brake levers provide firm and responsive stopping power. Adjust as needed or have a professional service them.
- **Chain Lubrication:** Keep the chain clean and lubricated to ensure smooth gear changes and prevent rust.
- **General Cleaning:** Clean your e-bike regularly with a damp cloth. Avoid using high-pressure water jets directly

on electrical components.

- **Fastener Checks:** Regularly inspect all bolts and fasteners to ensure they are tight and secure.

6. Troubleshooting Common Issues

This section addresses common issues you might encounter with your Likebike Seeker.

Problem	Possible Cause	Solution
Display not powering on	Battery not powered on; loose connection; low battery.	Ensure battery is powered on (green light). Check all cable connections. Charge the battery.
Motor not assisting	PAS level set to 0; brake levers engaged; loose motor cable.	Increase PAS level on display. Release brake levers. Check motor cable connection.
Short battery range	Under-inflated tires; heavy load; frequent use of throttle-only mode; cold weather.	Inflate tires to recommended PSI. Reduce load. Use pedal-assist more often. Battery performance may decrease in cold weather.
Brakes feel spongy or weak	Brake cable stretched; worn brake pads.	Adjust brake cable tension. Replace worn brake pads. Consult a bike mechanic if unsure.

For more complex issues or if the problem persists, please refer to the contact information in the Warranty and Customer Support section.

7. Technical Specifications

Feature	Specification
Bike Type	Electric Bike
Motor	350W (Peak 540W) Brushless Motor
Battery	36V 9Ah (324Wh) Removable Lithium-ion
Max Speed	20 MPH
Range (Pure Electric)	Up to 15 miles
Range (PAS)	Up to 35 miles
Wheel Size	26 Inches
Frame Material	Carbon Steel
Suspension Type	Front Fork Suspension (Lockable)
Number of Speeds	7

Feature	Specification
Max Load Capacity	330 LBS
Net Weight	58 LBS
Recommended User Height	5'4" - 6'4"
Brake Style	Disc
Special Features	LCD-Display, Rechargeable Battery, Odometer, Speedometer

4 Riding Modes

+ 1

and 5 Pedal-Assist Levels for your choice

4 Riding Modes+ 1



Pure electric mode



Classic bike mode



Pedal assist mode



Cruise Mode



Walking electric assist mode

PAS Modes 1-5 Levels



Detailed diagram illustrating the key dimensions and specifications of the Likebike Seeker electric bike.

8. Warranty and Customer Support

Likebike provides a one-year warranty for the electric motor, battery, and charger. We are confident in the quality of

our electric bikes and are committed to your satisfaction.

If you have any questions, concerns, or require after-sales support, please do not hesitate to contact us:

- **Via Amazon:** You can reach us through the Amazon email address associated with your purchase.
- **Through Manual Contact Information:** Refer to any contact details provided in your physical product manual.

We aim to respond and resolve your issues as soon as possible, typically within 24 hours.

For more information about Likebike products, visit the [Likebike Store on Amazon](#).