

[Manuals.plus](#) /

> [podofo](#) /

> Podofo 10.1 Inch Car Stereo Radio User Manual for Honda Fit 2008-2013

podofo 4+64G 8-core

Podofu 10.1 Inch Car Stereo Radio User Manual

For Honda Fit 2008-2013 Models

Model: 4+64G 8-core

1. PRODUCT OVERVIEW

The Podofu 10.1-inch Car Stereo Radio is an advanced infotainment system designed specifically for Honda Fit models manufactured between 2008 and 2013. This unit features an Android 13 operating system, an 8-core processor, 4GB of RAM, and 64GB of internal storage, providing a smooth and responsive user experience. It integrates seamlessly with your vehicle's existing systems, offering a wide array of features including wireless CarPlay, wireless Android Auto, GPS navigation, Bluetooth 5.0, FM/RDS radio, and support for a backup camera.



Image: Podofu 10.1 Inch Car Stereo Radio with included accessories, showcasing its main components and connectivity features.

2. INSTALLATION GUIDE

2.1 Compatibility and Pre-Installation

This car stereo system is designed for direct fitment in Honda Fit models from 2008 to 2013. Ensure your vehicle falls within this range for optimal compatibility. The installation process is designed to be straightforward, often involving a plug-and-play approach for the main unit.

For Honda Fit 2008-2013

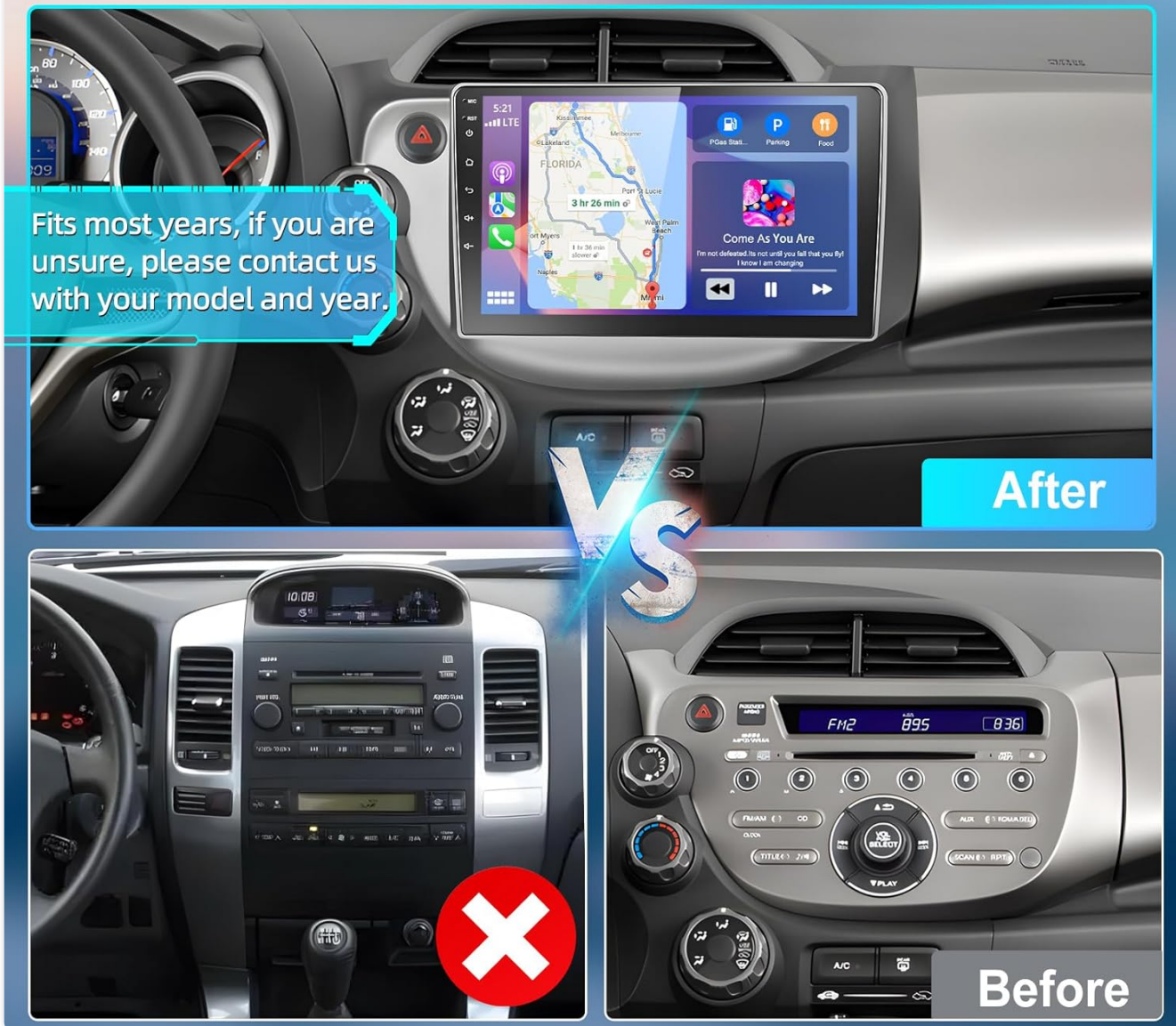


Image: Visual comparison of the Honda Fit dashboard before and after the installation of the Podofo car stereo, highlighting the integrated fit.

2.2 Wiring Connections

Carefully connect all cables as per the provided wiring diagrams. Ensure secure connections to prevent signal loss or malfunction.

2.2.1 Reversing Camera Wiring

The rear camera feature supports AHD high-definition 720P image input. Connect the reversing camera to the device via the video input port. The system allows switching between CVBS and AHD in settings (if applicable to your camera).

- **Red Cable:** Connects to the positive terminal of the car's reverse light cable.
- **Black Cable:** Connects to the negative terminal of the car's reverse light cable.
- The reverse input cable must be plugged in even if the reverse camera is not being used, as it affects Bluetooth and WiFi signal reception.

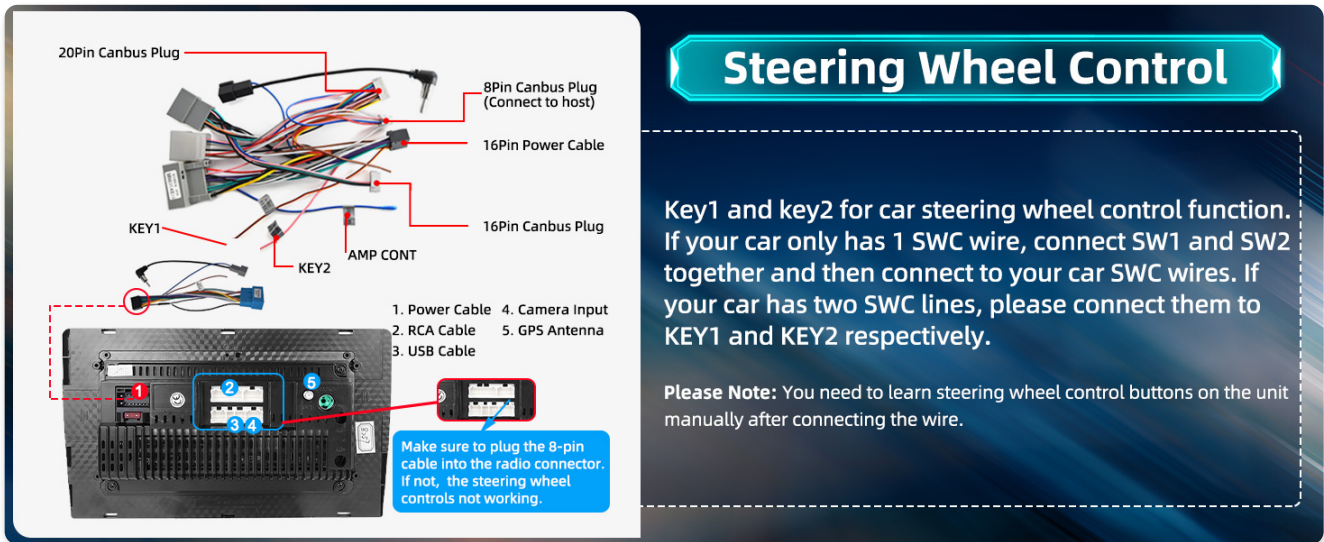


Image: Detailed wiring diagram for the reversing camera, illustrating connections to the car's reverse light and the stereo unit.

2.2.2 Steering Wheel Control (SWC) Wiring

The car radio supports the original car steering wheel control. This allows you to control various functions directly from your steering wheel, enhancing safety and convenience.

- **Key1 and Key2:** These are for the car steering wheel control function.
- If your car has only one SWC wire, connect SW1 and SW2 together and then connect them to your car SWC wires.
- If your car has two SWC lines, connect them to KEY1 and KEY2 respectively.
- Ensure the 8-pin plug is inserted into the radio connector. If not, steering wheel controls will not work.
- After connecting the wires, you will need to manually learn the steering wheel control buttons on the unit.

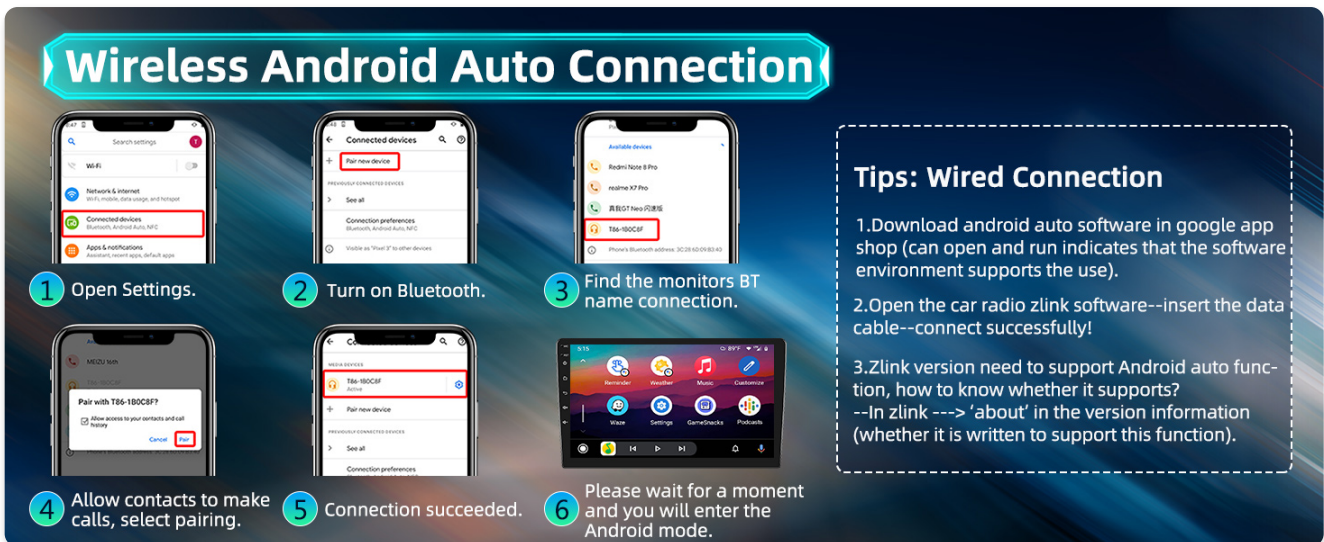


Image: Wiring diagram for steering wheel controls, detailing the connection points for Key1 and Key2.

3. OPERATING INSTRUCTIONS

3.1 Wireless CarPlay Connection

Seamlessly connect your iPhone to access features like address book, mail, notifications, map navigation, music,

and videos. Control functions using voice commands for safer driving.

1. Open Settings on your mobile phone.
2. Turn on Bluetooth.
3. Find the monitor's Bluetooth name connection (e.g., 'T86-10DCP').
4. Allow contacts to make calls, select pairing.
5. Connection succeeded.
6. Wait for a moment, and you will enter the CarPlay mode.

Tip: Wired Connection

- Connect your mobile phone to the USB port of your car stereo using a USB cable.
- Click on an app 'Zlink' on the car stereo.
- The CarPlay (mobile phone) interface will be displayed after successful connection.



Image: Step-by-step instructions for establishing a wireless CarPlay connection, including phone and stereo interface screenshots.

3.2 Wireless Android Auto Connection

Integrate your Android phone to navigate, make calls, send/receive messages, and listen to music without a data cable.

1. Open Settings on your mobile phone.
2. Turn on Bluetooth.
3. Find the monitor's Bluetooth name connection.
4. Allow contacts to make calls, select pairing.
5. Connection succeeded.
6. Wait for a moment, and you will enter the Android Auto mode.

Tip: Wired Connection

- Download Android Auto software from the Google Play Store.
- Open the car radio 'Zlink' software, insert the data cable, and connect successfully.
- Zlink version needs to support Android Auto function. Check 'About' in the version information to confirm support.



Image: Step-by-step instructions for establishing a wireless Android Auto connection, including phone and stereo interface screenshots.

3.3 GPS Navigation & WiFi Connection

Access online maps and navigation services with a simple Wi-Fi connection. The system supports global GPS (U.S.), Galileo (E.U.), and Glonass (Russia). You can download offline navigation apps from the Play Store for use without an internet connection.



Image: The car stereo displaying GPS navigation and various applications accessible via 4G and WiFi connectivity.

3.4 Bluetooth 5.0

Easily pair your smartphone or other devices for seamless audio streaming and hands-free calling using Bluetooth 5.0 technology.

3.5 Podofu UI 4.0

The system features Podofu UI 4.0 with 19 wallpapers and 59 UI desktop themes. These themes can be switched seamlessly without internet downloads, allowing for personalization of your car stereo interface.

Podofu UI 4.0

19 wallpapers & 59 UI desktop themes



Image: Various interface themes and wallpapers available within the Podofu UI 4.0, demonstrating customization options.

4. KEY FEATURES

- **Android 13 System:** Equipped with an 8-core processor, 4GB RAM, and 64GB storage for smooth multitasking and efficient performance. Features a 10.1-inch IPS capacitive screen with 1280*720 resolution.
- **Wireless CarPlay & Android Auto:** Seamless integration with both iOS and Android smartphones for navigation, communication, and media access.
- **GPS/Galileo/Glonass & WiFi:** Comprehensive navigation support with global satellite systems and easy access to online maps and services via Wi-Fi.
- **Bluetooth 5.0:** For stable and high-quality audio streaming and hands-free calling.
- **Hi-Fi Audio & 32 EQ DSP:** Enjoy high-fidelity audio with crisp and immersive sound quality. The 32-band EQ and Digital Signal Processing (DSP) allow for precise audio adjustments.

- **FM/RDS Radio:** Stay tuned to your favorite radio stations with FM and Radio Data System (RDS) features, providing station information.
- **Rear Camera Support:** Supports AHD high-definition 720P image input for clear visuals when reversing, aiding in safe parking and obstacle avoidance.
- **Steering Wheel Control (SWC):** Allows control of various functions directly from your steering wheel for a safer driving experience.
- **Podofu UI 4.0:** Offers extensive customization with 19 wallpapers and 59 unique UI desktop themes.



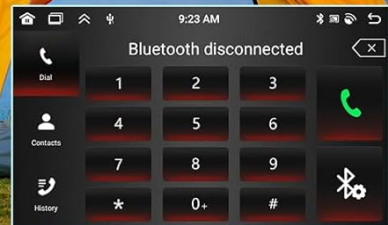
Image: Overview of the multi-functional capabilities of the Podofu car stereo, including key software and hardware features.

Bluetooth 5.0 Radio

With
32 EQ DSP

With
FM Radio

With
RDS Function



730
Days
WARRANTY

Image: Display of Bluetooth 5.0 connectivity, audio equalizer settings, and FM/RDS radio features.

Steering Wheel Control

Support the original car steering wheel to control the car stereo, calls, switch songs, etc.



AHD Backup Camera

Connect a reversing camera to the device via video input port, and view the rear view of your car on the device's screen when you shift to reverse gear. This helps you park safely and avoid obstacles.



Image: Illustration of steering wheel control capabilities and the clear view provided by the AHD backup camera.

5. MAINTENANCE

To ensure the longevity and optimal performance of your Podofa Car Stereo, follow these general maintenance guidelines:

- **Screen Cleaning:** Use a soft, lint-free cloth to gently wipe the touch screen. Avoid abrasive cleaners or harsh chemicals that could damage the display.
- **Software Updates:** Periodically check for available software updates to ensure your system has the latest features and bug fixes. Updates can typically be performed via Wi-Fi.
- **Environmental Conditions:** Avoid exposing the unit to extreme temperatures or direct sunlight for prolonged periods, as this can affect performance and lifespan.
- **Cable Connections:** Ensure all cables remain securely connected. Loose connections can lead to intermittent

issues with audio, video, or power.

6. TROUBLESHOOTING

This section addresses common issues you might encounter with your car stereo.

- **Unit Does Not Power On:**

- Check all power cable connections to ensure they are secure and correctly wired.
- Verify the vehicle's fuse for the stereo system.

- **Stuck on Boot Screen / Won't Load:**

- Try disconnecting the unit's power for a few minutes and then reconnecting it to perform a hard reset.
- If the issue persists, it may indicate a software or hardware problem. Contact customer support for assistance.

- **No Sound / Poor Sound Quality:**

- Check speaker wire connections.
- Ensure volume is not muted or set too low.
- Verify EQ settings are not causing distortion.

- **Wireless CarPlay/Android Auto Not Connecting:**

- Ensure Bluetooth is enabled on both the phone and the stereo.
- Delete previous pairings and try reconnecting.
- Check for software updates for both the stereo and your phone's operating system.

- **Steering Wheel Controls Not Working:**

- Confirm that the SWC wires are correctly connected to KEY1 and KEY2.
- Ensure the 8-pin plug is fully inserted into the radio connector.
- Perform the manual learning process for the steering wheel buttons as described in the installation section.

If you encounter issues not listed here or if troubleshooting steps do not resolve the problem, please contact Podof customer support for further assistance.

7. SPECIFICATIONS

Feature	Specification
Display Size	10.1 Inches

Feature	Specification
Product Dimensions	16.14 x 10.24 x 4.53 inches
Item Weight	5.64 pounds
Operating System	Android 13
Processor	8-core
Memory (RAM)	4GB
Storage (ROM)	64GB
Screen Resolution	1280*720 (IPS Capacitive)
Connectivity Technology	Bluetooth 5.0, Wi-Fi, 4G
Navigation	GPS, Galileo, Glonass
Audio Output Mode	Stereo (with 32 EQ DSP)
Special Features	Wireless CarPlay, Wireless Android Auto, Mirror Link, FM/RDS Radio, Rear Camera Input (AHD 720P), Steering Wheel Control, Podofo UI 4.0
Mounting Type	Dashboard Mount
Vehicle Service Type	Car (Honda Fit 2008-2013)

8. WHAT'S IN THE BOX

The product package includes the following components:

- Podofo Car Stereo Head Unit
- Power Cables (x2)
- GPS Antenna
- Rear Camera Input Cable
- RCA Cable
- USB Manual
- USB Cable (x2)
- Rear Camera

Product Size & Package List



Image: Product dimensions and a visual representation of all items included in the package.

9. WARRANTY AND SUPPORT

Your Podofu Car Stereo comes with a 2-year warranty from the date of purchase, covering manufacturing defects and malfunctions under normal use.

Podofu is committed to providing friendly and professional customer service and technical support. If you have any questions regarding installation, operation, or troubleshooting, please do not hesitate to contact our technical team. We aim to reply to all inquiries within 24 hours.

For additional protection, extended protection plans are available for purchase:

- 2-Year Protection Plan
- 3-Year Protection Plan
- Complete Protect (monthly plan covering eligible past and future purchases)

