



Manuals.plus /

› HUANUO /

› HUANUO Heavy Duty Monitor Arm HNSS21B User Manual

HUANUO HNSS21B

HUANUO Heavy Duty Monitor Arm HNSS21B User Manual

Model: HNSS21B

1. INTRODUCTION

Thank you for choosing the HUANUO Heavy Duty Monitor Arm HNSS21B. This monitor arm is designed to provide a stable and adjustable mounting solution for large ultrawide and curved monitors, enhancing your workspace ergonomics and organization. Please read this manual carefully before installation and use to ensure proper setup and safe operation.

2. SAFETY INFORMATION

- Do not exceed the maximum weight capacity of 35 lbs (15.8 kg).
- Ensure the desk surface is strong enough to support the combined weight of the monitor arm and your monitor.
- Always follow the assembly instructions carefully. Incorrect installation may result in equipment damage or personal injury.
- Keep small parts away from children.
- If you have any questions or encounter issues during installation, contact HUANUO customer support.

3. PACKAGE CONTENTS

Please verify that all components are present and undamaged before proceeding with installation.

- Monitor Arm Assembly (Upper and Lower Arms)
- Desk Clamp Base
- Grommet Mount Option
- VESA Plate
- USB 3.0 Cable

- Cable Management Clips
- Hardware Kit (screws, washers, Allen keys)
- Instruction Manual



Image: Overview of the HUANO Heavy Duty Monitor Arm components, including the arm, base, and included accessories.

4. SPECIFICATIONS

Feature	Specification
Brand	HUANUO
Model Number	HNSS21B
Material	Aluminum
Color	Black
Monitor Size Compatibility	27-49 inches (Ultrawide & Curved)
Weight Capacity	13-35 lbs (5.9-15.8 kg)
VESA Compatibility	75x75mm, 100x100mm
Tilt Angle	-60° to +15°
Swivel Angle	±90°
Rotation	360°
Height Range	Up to 18.5 inches
Max Arm Extension	25.2 inches
Desk Thickness (C-Clamp)	0.79-3.15 inches
Desk Thickness (Grommet)	0.79-3.35 inches
Grommet Hole Diameter	0.39-0.86 inches
USB Port	Integrated USB 3.0

Stable Monitor Mounting



Max Load

35 lbs



Monitor VESA

75x75mm/100x100mm

FLAT

CURVED

Screen Type

Flat / Curved

Image: The monitor arm supporting a 49-inch ultrawide monitor, illustrating its load capacity and VESA compatibility.

5. SETUP AND INSTALLATION

This section guides you through the installation of your HUANUO monitor arm. Ensure you have all necessary tools and components before starting.

5.1 Choose Your Mounting Option

The monitor arm supports two installation methods: C-Clamp and Grommet Mount. Select the method suitable for

your desk.

Two Ways to Mount

C-Clamp

Desk Thickness:
0.79"-3.15"



Grommet Mounting

Desk Thickness:
0.79"-3.35"
Hole Diameter:
0.39"-0.86"



Image: Visual guide for C-Clamp and Grommet mounting options, including compatible desk thickness and hole diameter.

5.1.1 Desk Compatibility Check

Before mounting, ensure your desk meets the compatibility requirements for the chosen method.

Image: Guidelines for C-clamp installation on desks with various edge and back panel configurations.

5.2 Assemble the Monitor Arm

Follow these steps to assemble the monitor arm and attach it to your desk.

Your browser does not support the video tag.

Video: This video demonstrates the step-by-step assembly process of the HUANUO HNSS21B monitor arm, including attaching the base, assembling the arm segments, and securing the VESA plate.

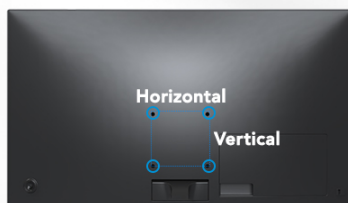
5.3 Attach Monitor to Arm

Ensure your monitor is VESA compatible (75x75mm or 100x100mm). For certain monitors like the Samsung Odyssey G9, a VESA adapter may be required (often included with the monitor).

Check VESA Compatibility

1. Monitor with VESA Holes

VESA Patterns
75x75mm | 100x100mm



Measure the distance between each hole on the back.

2. Monitor with Back Cover



Refer to monitor manual for information on VESA compatibility.

3. Monitor Without VESA Holes



A VESA adapter is required.

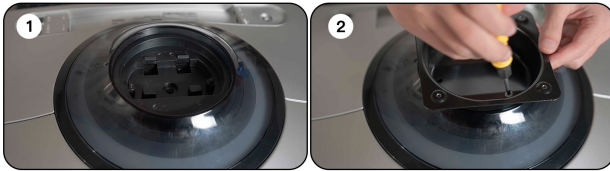
Image: Instructions on how to check your monitor's VESA compatibility and what to do if it lacks standard VESA holes.

5.3.1 Special Instructions for Samsung Odyssey G9 Monitors

If you are mounting a Samsung Odyssey G9 monitor, you will likely need to use the VESA adapter provided with

your monitor. Follow these steps:

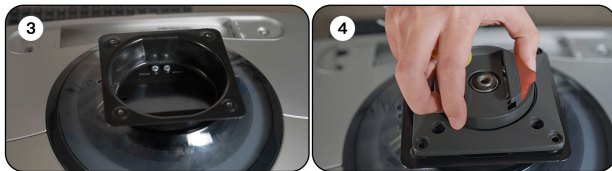
1. Remove the original Samsung monitor stand.
2. Attach the VESA adapter (included in the Samsung packaging) to the screen.
3. Secure the VESA adapter with screws.
4. Attach the VESA plate of the HUANUO monitor arm to the Samsung VESA adapter.
5. Tighten the screws to secure the VESA plate.
6. Mount the screen to the HUANUO monitor arm.



1. Remove the original Samsung monitor stand.

2. Attach the VESA adapter (included in the Samsung packaging) to the screen.

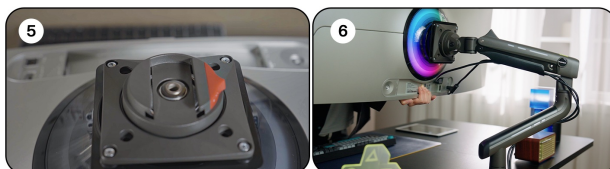
Image: Steps 1-2 for attaching a VESA adapter to a Samsung monitor.



3. Secure the VESA adapter with screws.

4. Attach the VESA plate of the HUANUO monitor arm to the Samsung VESA adapter.

Image: Steps 3-4 for attaching a VESA adapter to a Samsung monitor.



5. Tighten the screws to secure the VESA plate.

6. Mount the screen to the HUANUO monitor arm.

Image: Steps 5-6 for attaching a VESA adapter to a Samsung monitor.

5.4 Cable Management

Route your monitor cables through the integrated cable management channels on the arm to maintain a clean and organized workspace.

Clean Cable Management



Image: Cables are routed through the arm's channels for a tidy setup.

Your browser does not support the video tag.

Video: This video provides a detailed guide on installing the HUANUO HNSS21B monitor arm onto a desk using the C-clamp method and attaching a monitor.

6. OPERATION AND ADJUSTMENT

The HUANUO HNSS21B monitor arm offers full-motion adjustability for optimal viewing comfort.



Image: A complete desk setup featuring the HUANUO monitor arm with an ultrawide display.

Your browser does not support the video tag.

Video: This video illustrates the various adjustment capabilities of the HUANUO HNSS21B monitor arm, including height, tilt, swivel, and rotation, to achieve optimal ergonomic positioning.

6.1 Height Adjustment

The arm allows for vertical movement to position your monitor at the desired height, up to 18.5 inches.

Easy Screen Positioning

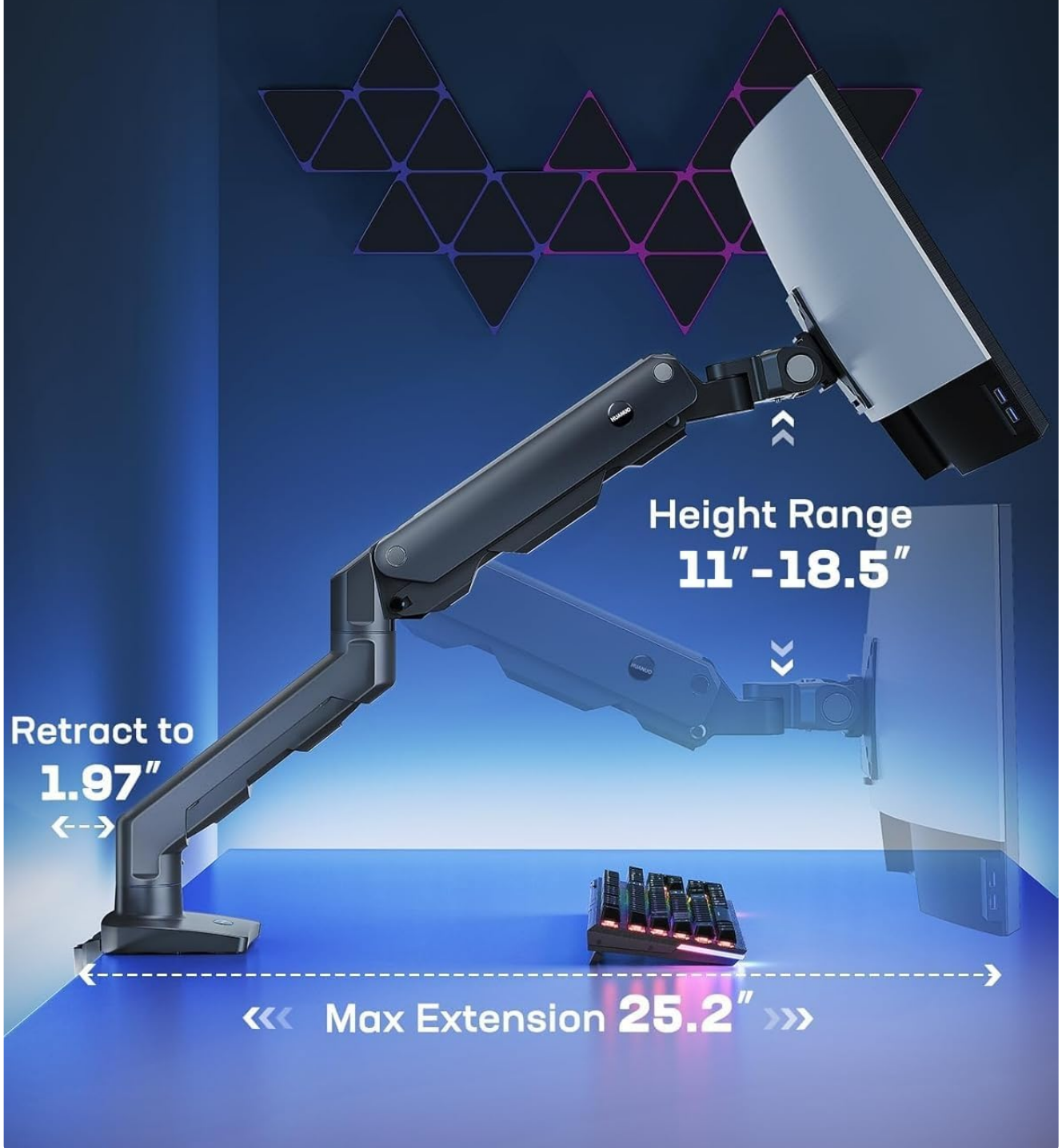


Image: The monitor arm demonstrating its height adjustment range and maximum extension.

6.2 Tilt Adjustment

Adjust the monitor's vertical angle from -60° to $+15^{\circ}$ to reduce glare and find your optimal viewing angle.



Image: Demonstrating the monitor's tilt capabilities on the arm.

6.3 Swivel Adjustment

Swivel the monitor $\pm 90^\circ$ left or right to share your screen with others or adjust for different tasks.



Image: Two individuals adjusting the monitor's swivel for collaborative viewing.

6.4 Rotation (Landscape/Portrait)

Rotate your monitor 360° to switch between landscape and portrait orientations as needed.



Image: The monitor arm supporting a display in both landscape and portrait modes.

6.5 Tension Adjustment

The mechanical spring structure allows for precise tension adjustment. Adjust the tension to ensure the monitor stays in place at your desired height and position.

- If the monitor **rises up**, turn the adjustment screw in the '-' direction to reduce tension.
- If the monitor **drops down**, turn the adjustment screw in the '+' direction to increase tension.



Image: Detail of the tension adjustment screw on the monitor arm.

6.6 Integrated USB 3.0 Port

The base of the monitor arm features an integrated USB 3.0 port for convenient access to charging and data transfer for your devices.



Image: The USB 3.0 port located on the base of the monitor arm.

7. MAINTENANCE

- Regularly check all screws and connections to ensure they are tight and secure.
- Clean the monitor arm with a soft, damp cloth. Avoid abrasive cleaners or solvents.
- Do not attempt to disassemble the internal components of the arm.

8. TROUBLESHOOTING

8.1 Monitor Sags or Does Not Stay at Desired Height

- **Solution:** Adjust the tension of the mechanical spring. Turn the adjustment screw in the '+' direction to increase tension until the monitor holds its position. Refer to Section 6.5.

8.2 Monitor is Difficult to Move Up or Down

- **Solution:** Adjust the tension of the mechanical spring. Turn the adjustment screw in the '-' direction to decrease tension. Refer to Section 6.5.

8.3 Monitor is Not Level

- **Solution:** Check the VESA plate attachment to the monitor and ensure it is securely fastened and level. Adjust the tilt mechanism if necessary.

9. WARRANTY AND SUPPORT

The HUANUO Heavy Duty Monitor Arm HNSS21B comes with a manufacturer's warranty. Please refer to the warranty card included in your package for specific terms and conditions. For technical support, replacement parts, or any inquiries, please contact HUANUO customer service through their official website or the retailer where you purchased the product.

10. PRODUCT OVERVIEW VIDEO

Your browser does not support the video tag.

Video: This video highlights the overall design, features, and benefits of the HUANUO HNSS21B Heavy Duty Monitor Arm, demonstrating its use with a large ultrawide monitor.

Your browser does not support the video tag.

Video: A short preview video showcasing the key features and flexibility of the HUANUO HNSS21B monitor arm, demonstrating its ease of adjustment and clean cable management.