

Manuals+

[Q & A](#) | [Deep Search](#) | [Upload](#)

[manuals.plus](#) /

› [EasyKeys](#) /

› [EasyKeys Eagle PB002 File Cabinet Replacement Key Instruction Manual](#)

EasyKeys PB002

EasyKeys Eagle PB002 File Cabinet Replacement Key Instruction Manual

Model: PB002

INTRODUCTION

This manual provides essential instructions for the proper use and care of your EasyKeys Eagle PB002 replacement key. This key is designed for file cabinets, desks, or cubicles that originally used an Eagle PB002 key. Please read this manual thoroughly to ensure correct identification and operation.



Image 1: EasyKeys Eagle PB002 Replacement Key. This image displays a silver-colored metal key with the code "PB001" (note: the image shows PB001, but the product is PB002, which is a common key blank for the series) stamped on its head, indicating its specific cut and compatibility.

SETUP AND KEY IDENTIFICATION

Before using your new replacement key, it is crucial to verify that it matches your existing lock. Incorrect key identification can lead to ordering the wrong key or damage to the lock.

Verifying Your Lock Code and Manufacturer

1. **Locate the Code:** The lock code (e.g., PB002) is typically found in one of the following locations:

- On the original key (if available).
 - Stamped on the face of the lock cylinder.
 - On a label inside or behind the lock mechanism.
 - On a label on the cabinet or door itself.
2. **Confirm Manufacturer:** Ensure your lock is manufactured by Eagle or is compatible with the Lori (GCODE / CODES ONLINE 1014J) system, as this key is specifically cut for these systems.
 3. **Match the Code:** The code on your lock or original key must precisely match "PB002" for this replacement key to function correctly.

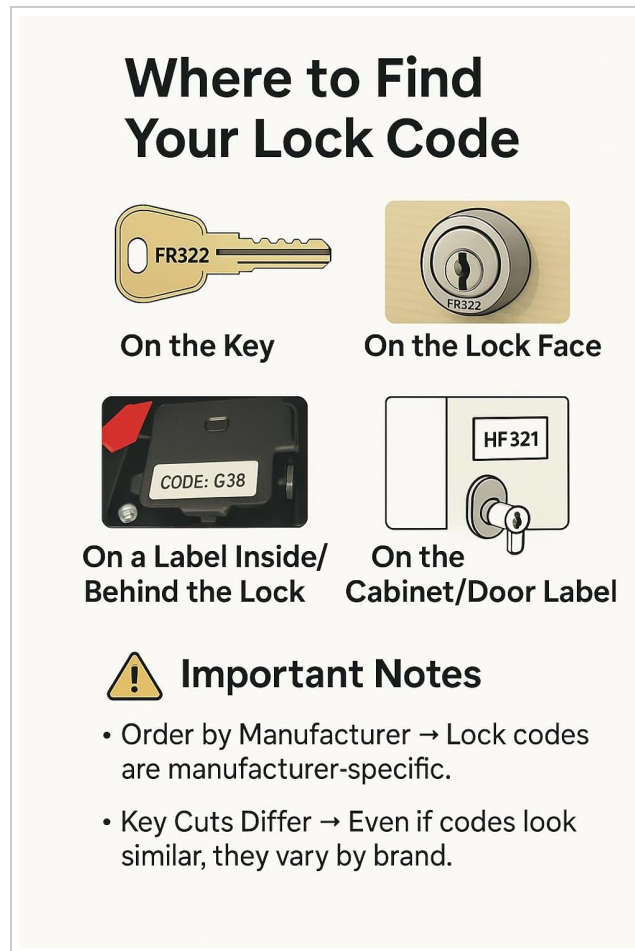


Image 2: Diagram illustrating common locations for finding a lock code. This includes on the key itself, on the lock face, on a label inside or behind the lock, and on a cabinet/door label. Important notes emphasize ordering by manufacturer and that key cuts differ even with similar codes.

Important Note: Even if codes appear similar, key cuts can vary significantly between manufacturers. Always verify both the code and the manufacturer.

OPERATING INSTRUCTIONS

Using your EasyKeys PB002 replacement key is straightforward:

1. **Insert the Key:** Gently insert the key into the lock cylinder. Do not force the key.
2. **Turn to Unlock/Lock:** Turn the key clockwise or counter-clockwise (depending on the lock mechanism) to engage or disengage the lock.
3. **Remove the Key:** Once the lock is in the desired position (locked or unlocked), turn the key back to its original insertion position and gently pull it out.

If the key does not turn smoothly, do not apply excessive force. Refer to the Troubleshooting section.

MAINTENANCE

Proper maintenance ensures the longevity of your key and the smooth operation of your lock:

- **Keep Clean:** Periodically wipe the key with a soft, dry cloth to remove dirt or debris.
- **Avoid Harsh Chemicals:** Do not use abrasive cleaners or harsh chemicals on the key, as this can damage the brass material.
- **Lubrication (if needed):** If the lock mechanism becomes stiff, a small amount of graphite lubricant (specifically designed for locks) can be applied to the key or directly into the keyway. Avoid oil-based lubricants.
- **Storage:** Store the key in a dry place, away from extreme temperatures or corrosive environments.

TROUBLESHOOTING

- **Key does not insert fully:**
Check for obstructions in the keyway (e.g., dirt, broken key fragments). Ensure the key is oriented correctly. If the key is bent or damaged, it may need replacement.
- **Key inserts but does not turn:**
Verify that the key code (PB002) and manufacturer (Eagle/Lori compatible) match your lock. The lock mechanism might be jammed or require lubrication. Do not force the key, as this can break it or damage the lock.
- **Lock is stiff or difficult to operate:**
Apply a small amount of graphite lubricant to the key or directly into the keyway. Ensure the lock mechanism itself is not damaged or misaligned.
- **Key is bent or broken:**
A bent or broken key cannot be repaired and must be replaced. Ensure proper handling to prevent damage.

SPECIFICATIONS

Attribute	Detail
Brand	EasyKeys
Model Name	PB002
Manufacturer	Eagle
Compatible Manufacturers	Lori (GCODE / CODES ONLINE 1014J)
Lock Type	Cam
Material	Brass
Color	Brass (Key itself is typically silver-colored metal, but material is brass)
Item Dimensions (L x W x H)	0.5 x 0.5 x 1 inches
Item Weight	4 ounces
Special Features	Adjustable Fit, Custom Cut Key, Durable
Included Components	Key (1)

SUPPORT AND CONTACT INFORMATION




For further assistance, questions, or to report issues, please contact EasyKeys customer support.

- **Manufacturer:** Eagle
- **Brand:** EasyKeys
- **Online Store:** [Visit the EasyKeys Store on Amazon](#)
- **General Inquiries:** Refer to the EasyKeys official website or contact information provided with your purchase.

Please have your product model (PB002) and any relevant lock codes ready when contacting support.



Related Documents - PB002

	<p>HIMNO PB002 Magnetic Power Bank User Manual 5000mAh Wireless Charging</p> <p>Official user manual for the HIMNO PB002 Magnetic Power Bank. Learn about its features, specifications, charging functions, warnings, and troubleshooting for this 5000mAh portable charger with wireless charging capabilities.</p>
	<p>USSUNNY UN-PB002 Multi-Function Car Jump Starter User Manual</p> <p>User manual for the USSUNNY UN-PB002, a 16000mAh multi-function car jump starter with LED flashlight and device charging capabilities. Provides instructions for jump-starting 12V vehicles and safety guidelines.</p>
	<p>LIMKOO Short Sleeve Running Shirts - Product Templates and Designs</p> <p>Detailed product templates and design specifications for LIMKOO's range of performance short sleeve running shirts, including models PB001 through PB008. Features include front and back views, neck trim, sleeve details, and optional side panels.</p>