

Manuals+

[Q & A](#) | [Deep Search](#) | [Upload](#)

[manuals.plus](#) /

› [EasyKeys](#) /

› [EasyKeys Hudson H1906 File Cabinet Replacement Key User Manual](#)

EasyKeys H1906

EasyKeys Hudson H1906 Replacement Key User Manual

For File Cabinets, Desks, and Cubicles

1. PRODUCT OVERVIEW

This document provides instructions for the EasyKeys replacement key, specifically designed for Hudson H1906 series locks. This key is compatible with various file cabinets, desks, and cubicles manufactured by Hudson, utilizing lock codes within the H0001 to H3000 range. The key is custom-cut to match your specific lock code, ensuring a precise fit and reliable operation.



This image displays a typical brass replacement key. The key is designed to fit specific lock mechanisms, and its unique cuts correspond to a particular lock code. The example shown has 'H0001' stamped on the key head, indicating its series.

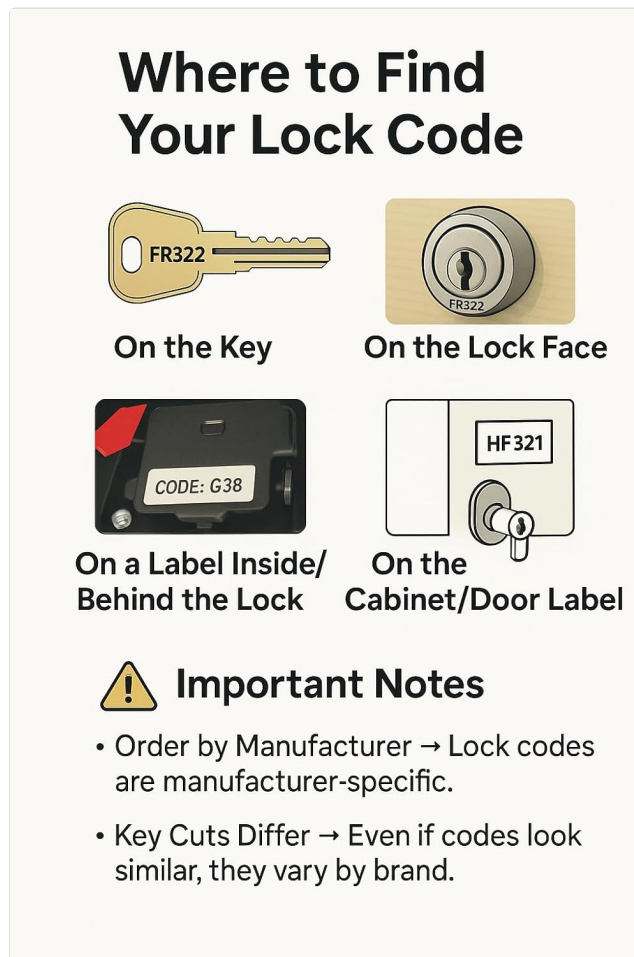
2. KEY IDENTIFICATION AND SETUP

Before using your replacement key, it is crucial to verify that the lock code on your existing lock or key matches the H1906 code for which this key was ordered. Incorrect key codes will prevent proper operation.

2.1 How to Find Your Lock Code

Your lock code can typically be found in several locations:

- **On the Existing Key:** The code is often stamped directly on the head of your original key (e.g., H1906).
- **On the Lock Face:** The code may be engraved or printed on the metal face of the lock cylinder itself.
- **Inside/Behind the Lock:** For some locks, the code is on a label or stamped directly onto the lock mechanism, visible when the cabinet or desk drawer is open.
- **On the Cabinet/Door Label:** Occasionally, the manufacturer places a label with the lock code on the inside of the cabinet door or drawer.



This diagram illustrates common locations where you can find the lock code for your file cabinet, desk, or cubicle. These locations include directly on the existing key, stamped on the face of the lock cylinder, on a sticker or label placed inside or behind the lock mechanism, or on a label affixed to the cabinet or door itself. Identifying the correct code is essential for ordering the appropriate replacement key.

Important Notes:

- Lock codes are specific to the manufacturer. Ensure your lock is a Hudson brand lock.
- Key cuts can differ significantly between brands, even if codes appear similar. Always verify both the manufacturer and the exact code.

3. OPERATING INSTRUCTIONS

To operate your lock with the EasyKeys Hudson H1906 replacement key:

1. Gently insert the key into the lock cylinder. Do not force the key.

2. Once fully inserted, turn the key clockwise or counter-clockwise (depending on the lock mechanism) to engage or disengage the lock.
3. Remove the key after locking or unlocking.

4. MAINTENANCE

Proper care will extend the life of your key and ensure smooth operation:

- **Keep Clean:** Periodically wipe the key with a soft, dry cloth to remove dirt or debris.
- **Avoid Bending:** Do not use excessive force or attempt to bend the key, as this can damage its cuts and render it unusable.
- **Storage:** Store the key in a safe place where it will not be exposed to harsh chemicals or extreme temperatures.

5. TROUBLESHOOTING

If you encounter issues with your replacement key, consider the following:

- **Key Does Not Insert Fully:** Ensure there is no obstruction in the lock cylinder. Verify that the key code matches your lock.
- **Key Does Not Turn:** Do not force the key. The key code may be incorrect, or the lock mechanism might be jammed or damaged. Ensure the key is fully inserted.
- **Lock Is Stiff:** A small amount of graphite lubricant (not oil-based lubricants) can be applied to the lock cylinder to improve smoothness.

If problems persist, re-verify your lock code and manufacturer. If the key code is correct and the key still does not function, the lock mechanism itself may require professional attention or replacement.

6. SPECIFICATIONS

Feature	Detail
Brand	EasyKeys
Model Name	H1906
Manufacturer	Hudson
Lock Type	Cam
Material	Brass
Special Feature	Custom Cut Key, Durable
Item Dimensions (L x W x H)	0.5 x 0.5 x 1 inches
Item Weight	4 ounces

7. WARRANTY AND SUPPORT

For specific warranty information or further assistance, please refer to the EasyKeys official website or

contact their customer support directly. Ensure you have your order details and lock code available when seeking support.

© 2024 EasyKeys. All rights reserved.